

Everglades Cooperative Invasive Species Management Area



Welcome/Year in Review

ECISMA Co-Chairs:

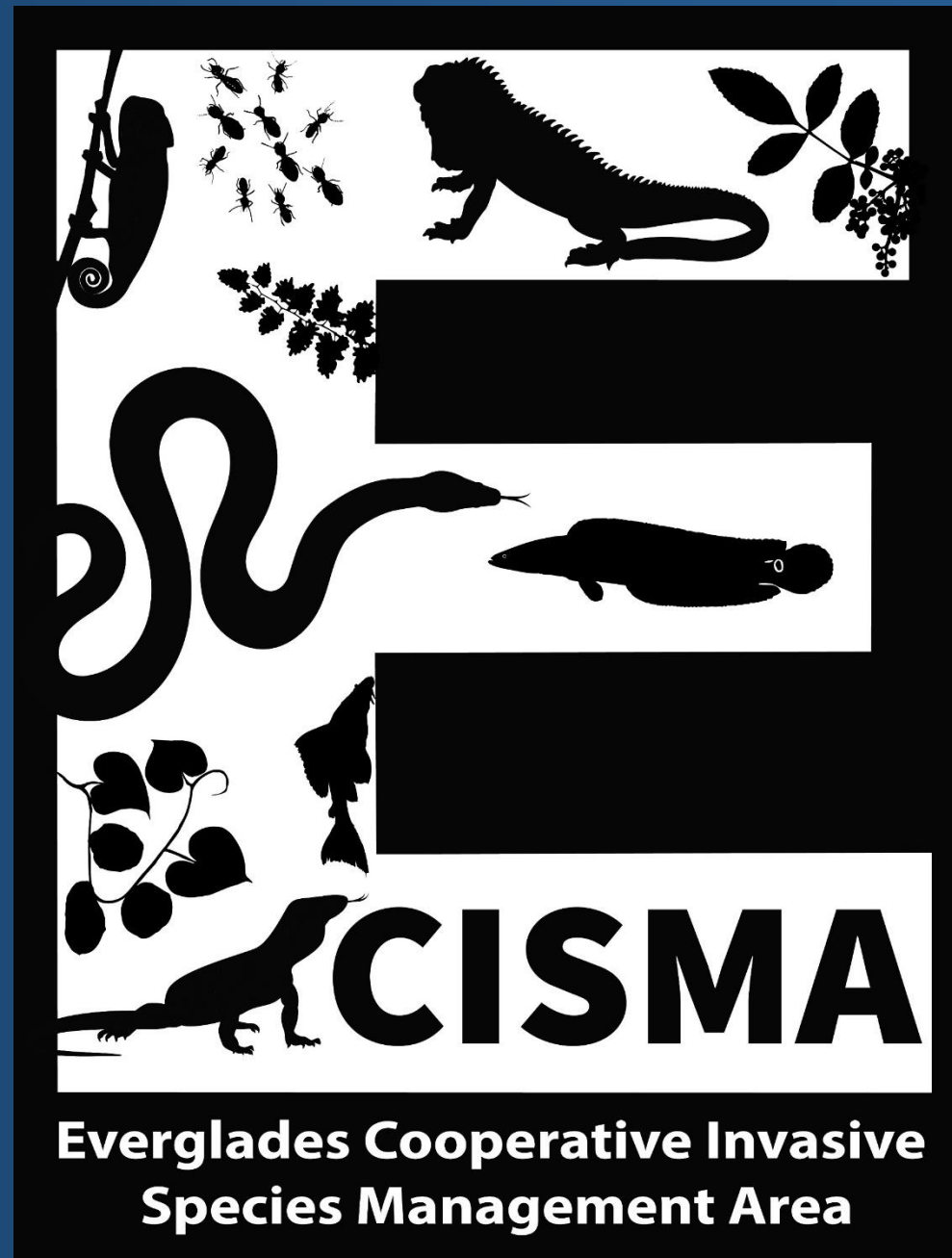
LeRoy Rodgers, SFWMD

&

Dennis Giardina, FWC

20th Annual Everglades
Invasive Species Summit

The New ECISMA Logo



Everglades Cooperative Invasive Species Management Area

The 2022 Summit



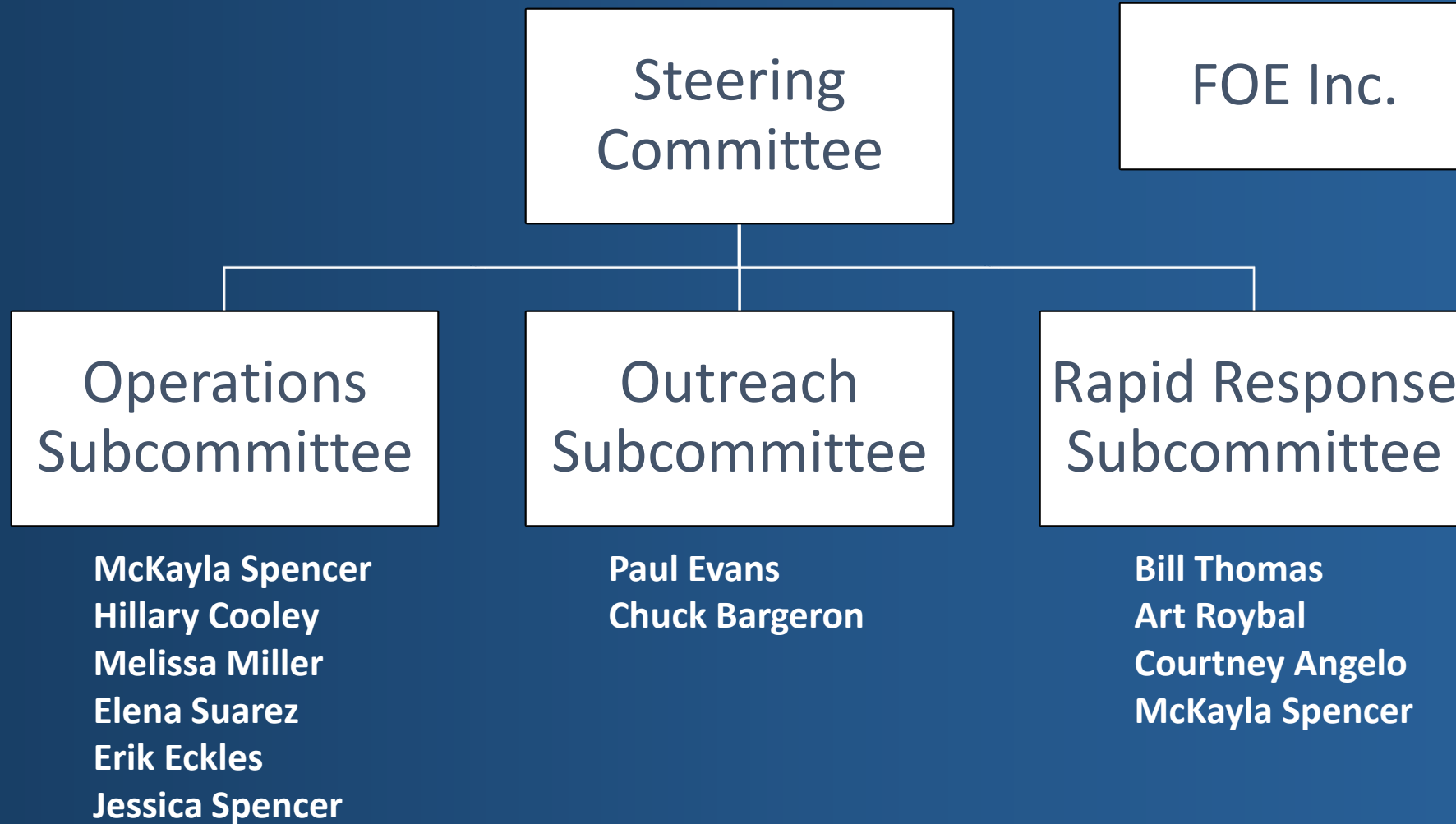
Everglades Cooperative Invasive Species Management Area

Jana Rose Giardina, the Summit Baby!



Everglades Cooperative Invasive Species Management Area

Everglades CISMA Organization Chart





SOUTH FLORIDA WATER MANAGEMENT DISTRICT

MEMORANDUM OF UNDERSTANDING

AGREEMENT NO. 4600004168

BETWEEN THE

SOUTH FLORIDA WATER MANAGEMENT DISTRICT
AND
FLORIDA FISH AND WILDLIFE CONSERVATION COMMISSION
AND
UNITED STATES ARMY CORPS OF ENGINEERS
AND
UNITED STATES FISH AND WILDLIFE SERVICE
AND
UNITED STATES NATIONAL PARK SERVICE

THIS MEMORANDUM OF UNDERSTANDING (MOU) is entered into as of _____ by and between the South Florida Water Management District (**DISTRICT**), Florida Fish and Wildlife Conservation Commission (**FFWCC**), United States Army Corp of Engineers (**USACE**), United States Fish and Wildlife Services (**USFWS**), United States National Park Service (**USNPS**), Broward County Board of County Commissioners (**BROWARD COUNTY**), and Miami-Dade County Board of County Commissioners (**MIAMI-DADE COUNTY**).

WHEREAS, the **DISTRICT** is a government entity created by Chapter 373, Florida Statutes; and

WHEREAS, the **DISTRICT**, **FFWCC**, **USACE**, **USFWS**, **USNPS**, **BROWARD COUNTY**, and **MIAMI-DADE COUNTY** may hereinafter also be referred to individually as "PARTY" and collectively as "PARTIES"; and

WHEREAS, each **PARTY** to this **MOU** has invasive species control responsibilities on lands within the Everglades region, which include but are not limited to: maintaining personnel and equipment for the purpose of controlling invasive plants and/or animals within their jurisdiction; administering programs involving invasive species control; and making recommendations for treatment; and

WHEREAS, the Everglades Forever Act of 1994 (§373.4592, Florida Statutes) directs the **DISTRICT** to coordinate with federal, state, or other governmental entities to establish a program to control the expansion of and for the removal of exotic species; and

ECISMA MOU

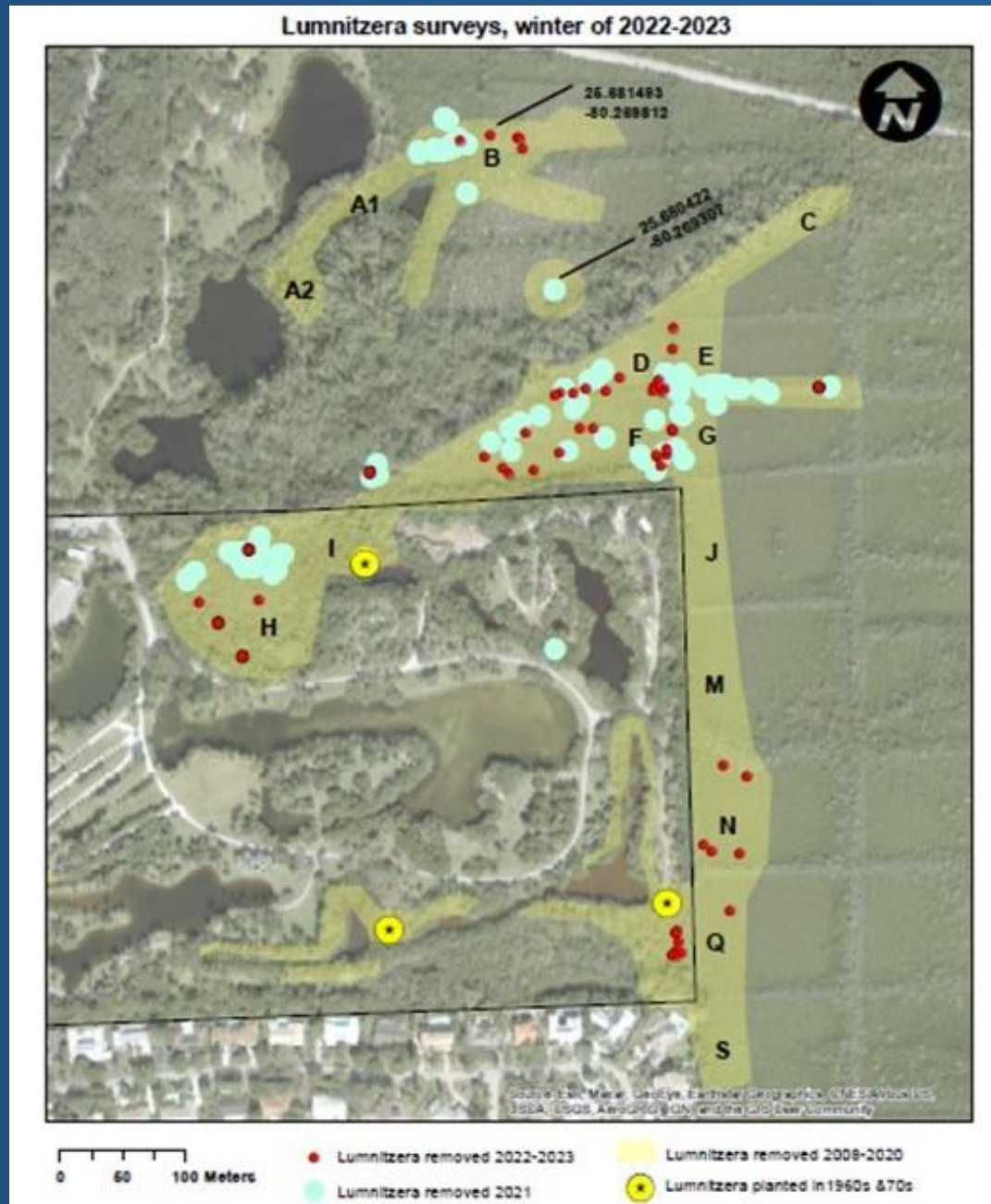


ECISMA Workdays



Everglades Cooperative Invasive Species Management Area

Lumnitzera racemosa



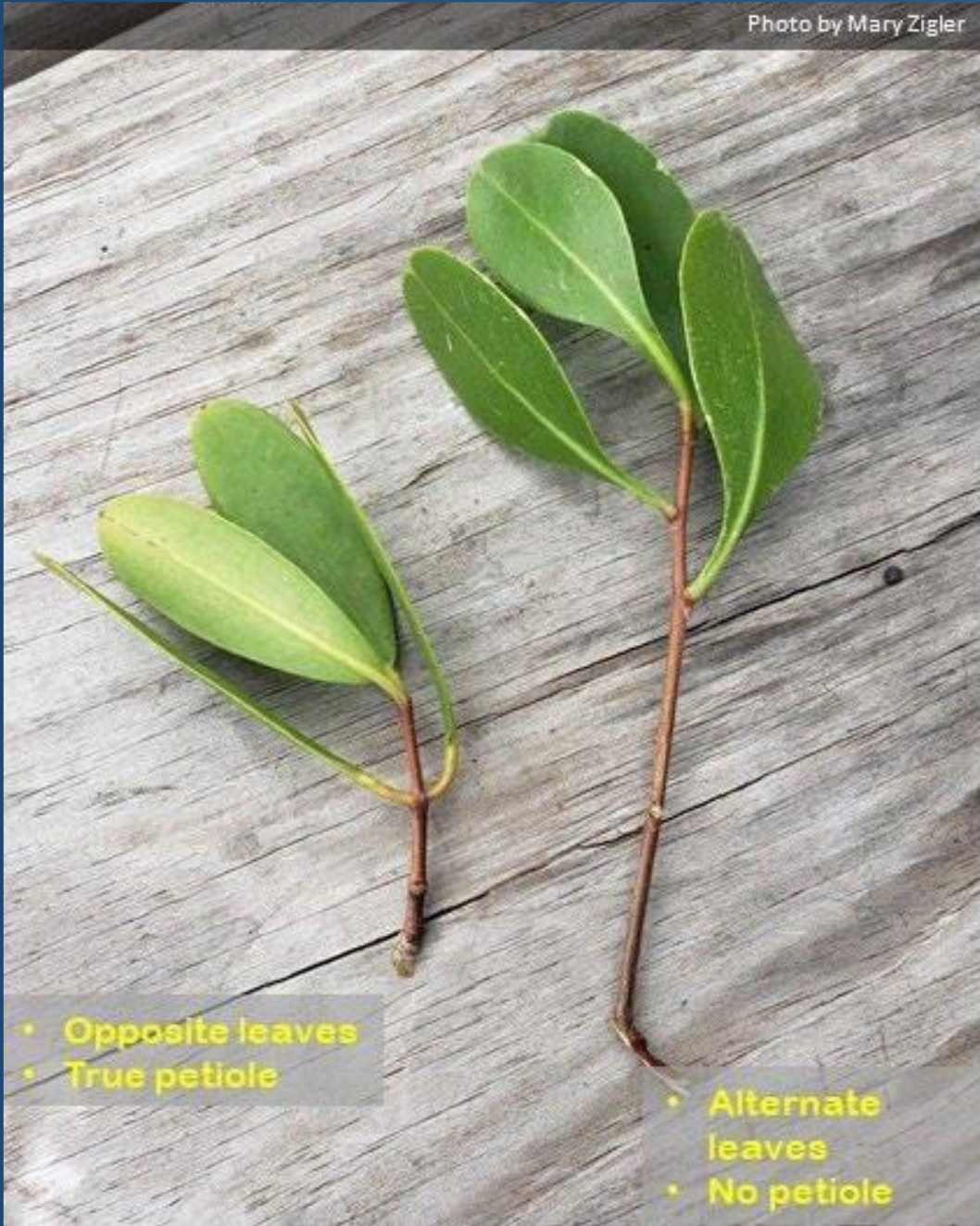


Everglades Cooperative Invasive Species Management Area

Photo by Mary Zigler

Laguncularia racemosa

Lumnitzera racemosa



- Opposite leaves
- True petiole

- Alternate leaves
- No petiole





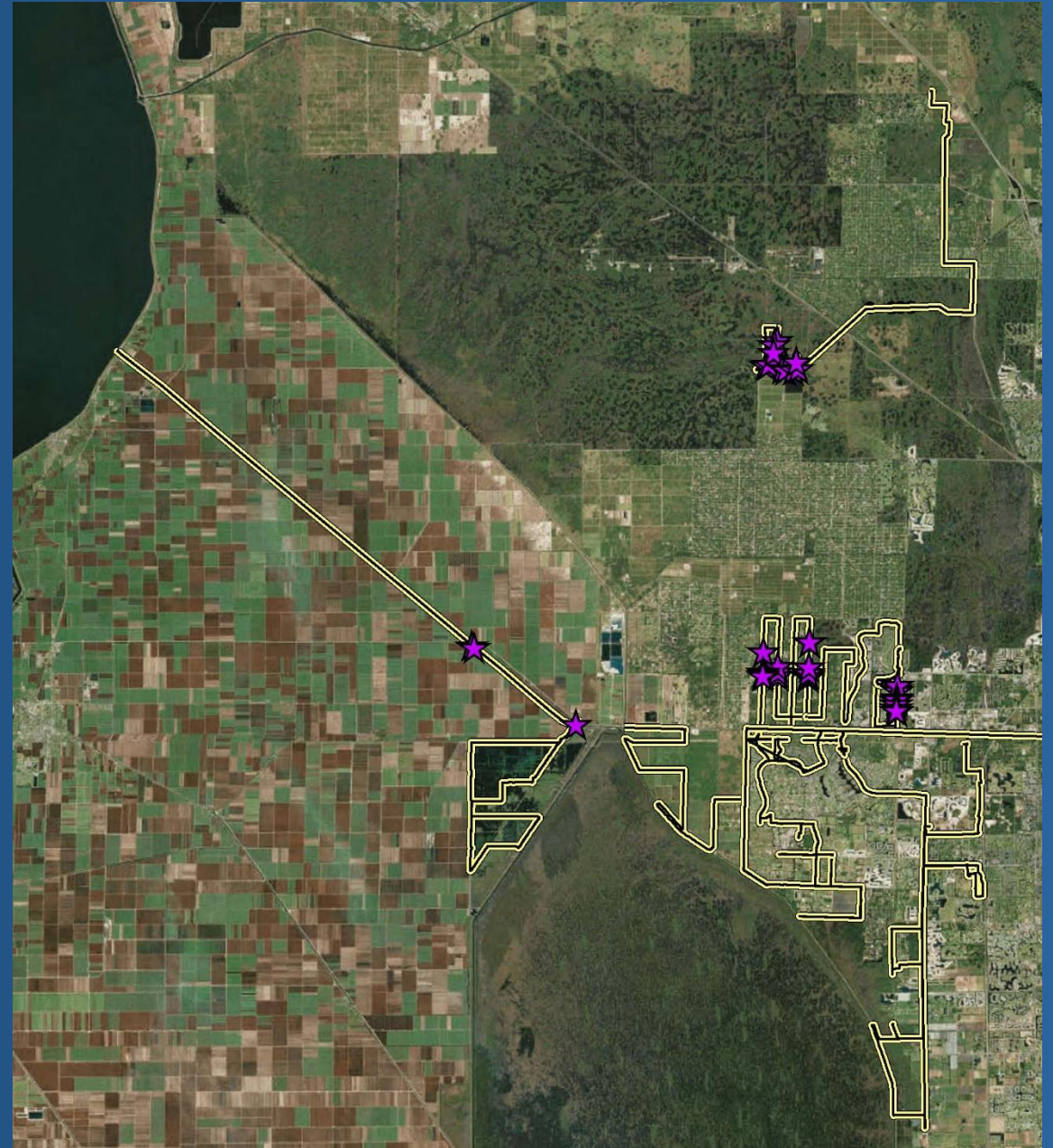
Everglades Cooperative Invasive Species Management Area

Mission Grass
(*Cenchrus polystachios*)



Everglades Cooperative Invasive Species Management Area

Mission Grass



Everglades Cooperative Invasive Species Management Area

*Wright's
Nutrush*
(*Scleria lacustris*)



Everglades Cooperative Invasive Species Management Area

*Wright's
Nutrush*
(*Scleria lacustris*)



Everglades Cooperative Invasive Species Management Area



Everglades Cooperative Invasive Species Management Area

Conehead Termites



Everglades Cooperative Invasive Species Management Area

Broward County In-house Work Days



Everglades Cooperative Invasive Species Management Area

SFER Task Force – moving forward with WRDA 2020!

YouTube Search Sign in

Recommended Actions for SFERTF:

Interrupting Pathways
Prevent them from getting here:

- Regulations
- Outreach and Education

Response Planning
Prepare for swift response:

- Research
- Monitoring
- Strategic planned responses

Everglades Re...

Zoom

1:15:41 / 6:35:43

this into interim things that can
Carrie Beeler Agenda Item #3

Activate Windows
Go to Settings to activate Windows.

June 1, 2023 - South Florida Ecosystem Restoration Task Force Meeting

Everglades Cooperative Invasive Species Management Area



Florida Fish and Wildlife Conservation Commission Invasive Plant Management Section

Funding for Invasive Plant Control ECISMA Footprint

July 1, 2022 to June 30, 2023

Everglades NP - \$367,115 – 3,251 ac.

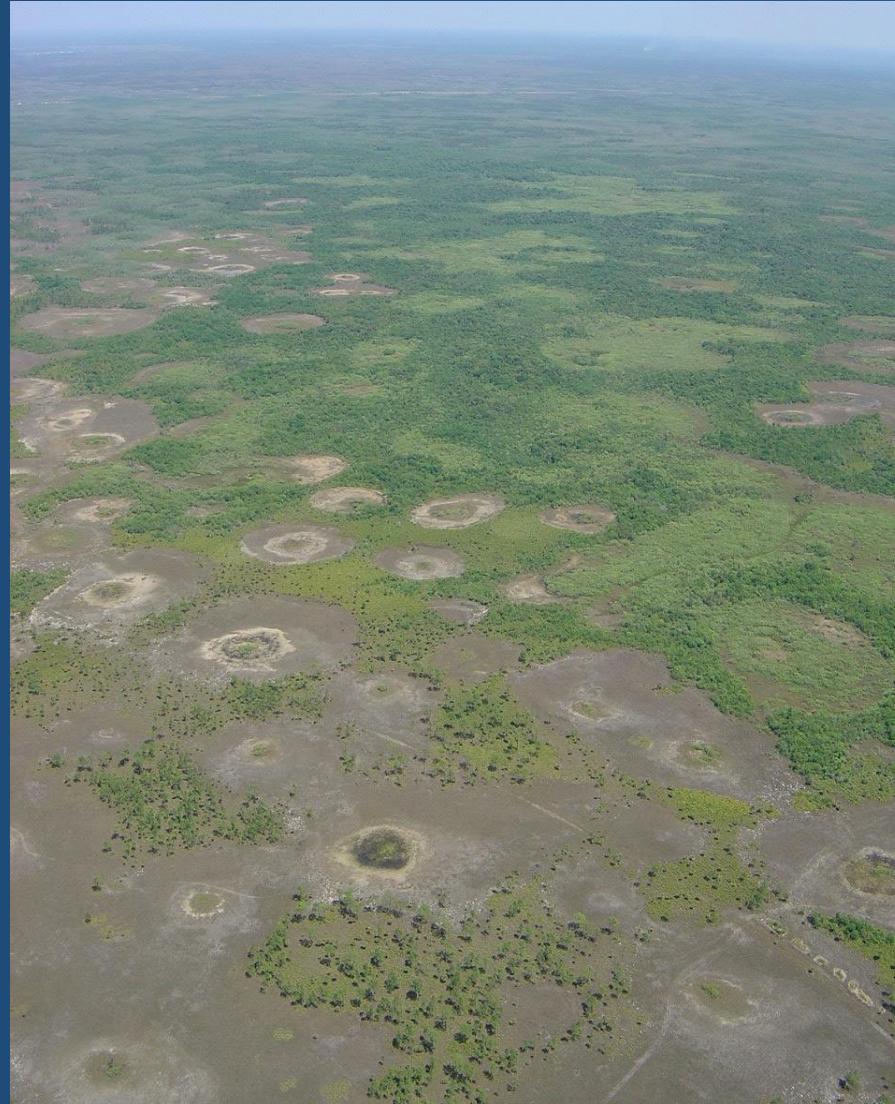
Loxahatchee - \$1,000,000 – 2,296 ac.

Melaleuca - \$1,000,000 – 288,504 ac.

Miami Dade - \$236,083 – 530 ac.

Everglades Complex of WMAs –
\$1,551,231 – 11,663 ac

Big Cypress NP - \$329,724 – 14,882 ac.



1 Year

321,166 Acres

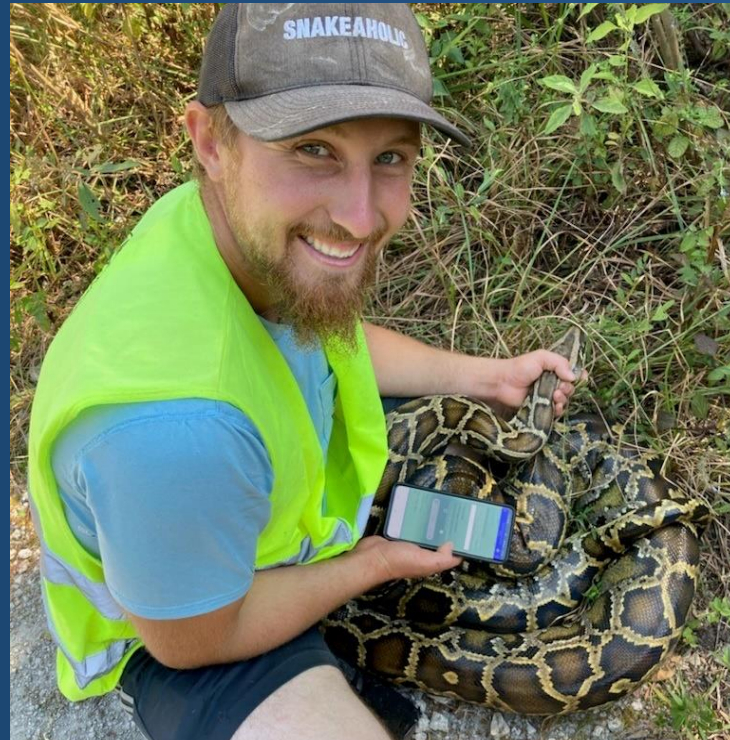
\$4,484,153



Everglades Cooperative Invasive Species Management Area

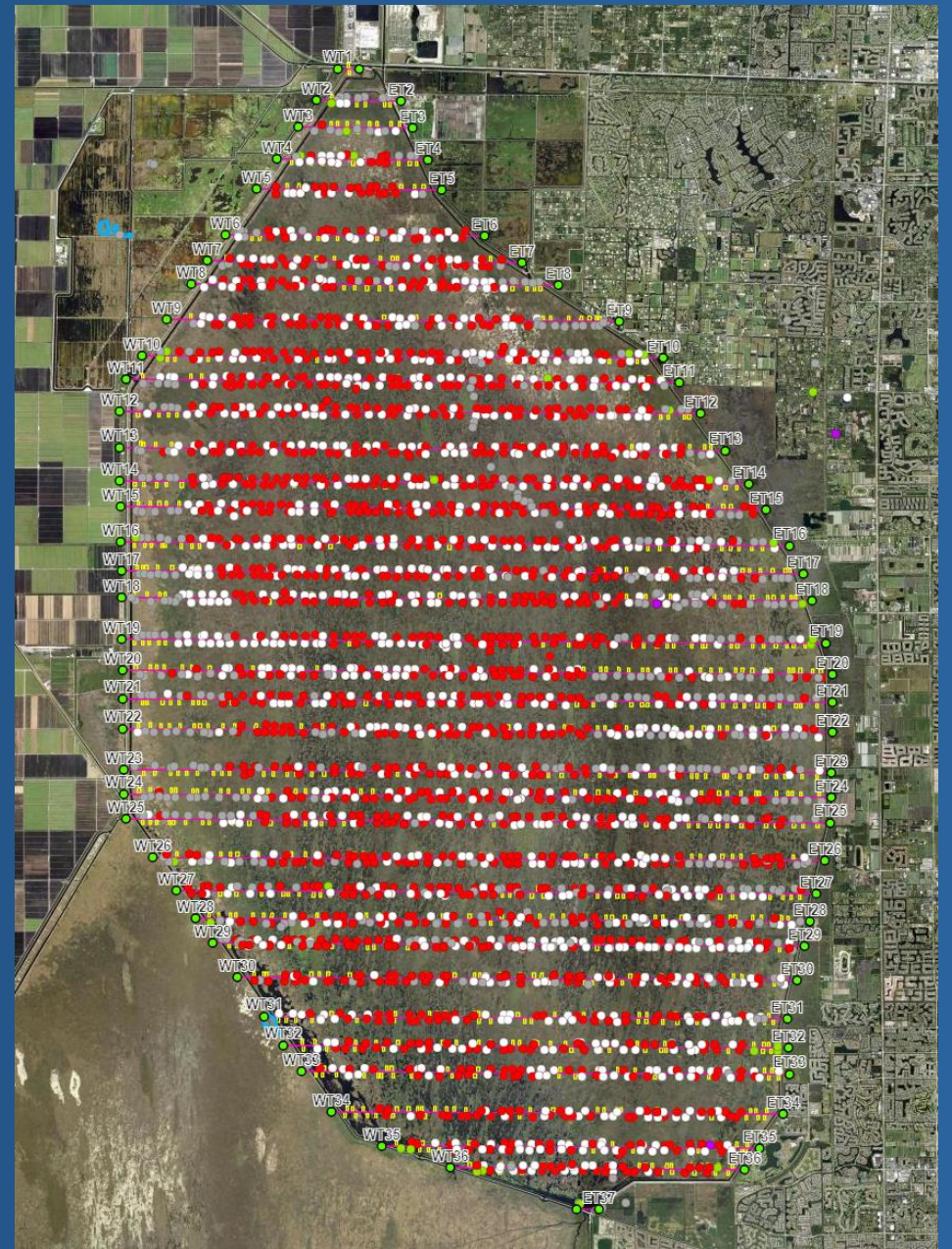
FWC &
SFWMD

Python Contractor Programs



Everglades Cooperative Invasive Species Management Area

Systematic Reconnaissance Flights (SRF)



Everglades Cooperative Invasive Species Management Area



Everglades Cooperative Invasive Species Management Area

Research

- Biological Control (USDA)
- Python tracking in eastern Everglades (USGS, UF, SFWMD, FWC)
- Everglades Invasive Reptile and Amphibian Monitoring Program (UF, SFWMD, USACE)
- Old World climbing fern research (UF, SFWMD)
- Python Lures Study (UF, SFWMD)
- And many others!



UF Python Lures Project

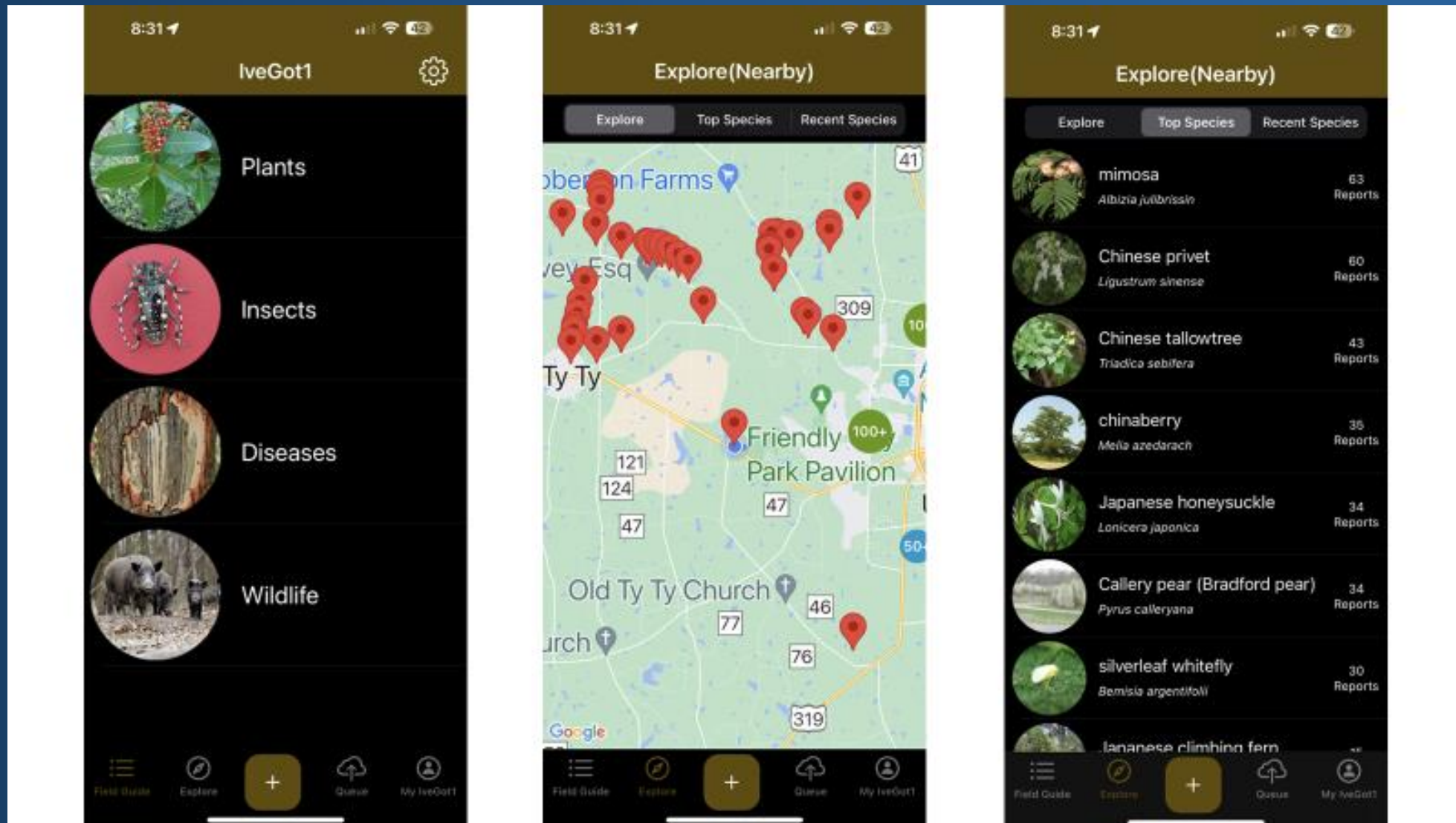


Dale Halbritter (USDA) releasing Brazilian peppertree thrips



Outreach

IveGot1 Upgrade – UGA Bugwood and FWC



Everglades Cooperative Invasive Species Management Area



ECISMA Newsletter



TABLE OF CONTENTS

Getting Things Done! Invasive Reptile Internship Program in the Greater Everglades Ecosystem	1
Early Detection and Rapid Response to Tokay Geckos and Rainbow Boas in South Florida	2
Invasive Coarcted Termites – Continued Risk of Introductions and Spread of Destructive Pests	3
Python Patrol Program	6
Natives Bite Back! Are Burmese Pythons Beginning to Encounter the Resilience of the Everglades Ecosystem?	7
National Invasive Species Awareness Week: ECISMA North African Python Surveys	8
Increasing the Efficiency and Power of Camera Traps for EDRR & Ecological Monitoring	9
The Exotic Pet Amnesty Program	10
Burmese Python Sex and Reproduction: Fact vs Fiction	11
Snakebite Carvings	12



Newsletter

VOLUME 12 2022



2022 Intern Squad holds a Burmese Python in Big Cypress National Preserve. Pictured from left to right; Brandon Gross, Marcellus Murray, Kendra Trichel, Jose Torres, Teah Evers, Kyra Woytek, Ricky Ribas, Shannon Thrasher, and Peter Crawford.

Getting Things Done! Invasive Reptile Internship Program in the Greater Everglades Ecosystem

By: Lisa M. McBride¹ and Christina Romagosa²

¹U.S. Geological Survey, Fort Collins Science Center

²Department of Wildlife Ecology and Conservation, University of Florida

Have you heard that research is being done on Burmese pythons? For over 15 years, the U.S. Geological Survey (USGS) has been conducting invasive reptile research in Southern Florida's Greater Everglades Ecosystem with various partners. A combination of federal staff and interns, the USGS team works in Everglades National Park, Big Cypress National Preserve, Crocodile Lake National Wildlife Refuge, and beyond. In 2013, scientists from the Invasive Species Science Branch of USGS's Fort Collins Science Center established an ongoing interagency partnership with the National Park Service (NPS) stationed in Everglades National Park to carry out the important work, currently focused on research contributing to the control and containment of Burmese pythons (*Python molurus bivittatus*) and black and white tegus (*Salvator merianae*),

among other species of concern. But how is so much field-based research on invasive reptiles accomplished in Southern Florida's vast jungle?

In 2014, USGS, NPS, and the University of Florida developed the Invasive Reptile Internship Program that is at the core of our ongoing research. This internship complements the Everglades BioCorps Internship Program, both of which trains early-career biologists to conduct rigorously scientific field and laboratory work. The program provides research interns opportunities to develop their skills in wildlife research and conservation while expanding their networks for graduate school and enriched careers in the biological sciences. Interns participate in field-based research on Burmese python

CONTINUED ON PAGE 2

Palm Beach County Guided Invasive Species Walks



Everglades Cooperative Invasive Species Management Area

University of Florida/IFAS Croc Docs Lab - Targeted Outreach



Everglades Cooperative Invasive Species Management Area



Everglades Cooperative Invasive Species Management Area

Friends of Everglades CISMA Fundraiser



Everglades Cooperative Invasive Species Management Area

Everglades Challenge Regatta – 300 Miles Friends of ECISMA's Solar-Powered Boat



Everglades Cooperative Invasive Species Management Area





Everglades CISMA Partner of the Year



Everglades Cooperative Invasive Species Management Area

Elena Suarez



Erik Eckles



Everglades CISMA Partnership Award



Everglades Cooperative Invasive Species Management Area

Everglades Cooperative Invasive Species Management Area

Thank You!



Think locally, Act neighborly
invasive species know no boundaries!

