

Everglades Cooperative Invasive Species Management Area

Welcome/Year in Review

ECISMA Co-Chairs:

LeRoy Rodgers, SFWMD

&

Dennis Giardina, FWC



21st Annual Summit



Everglades Cooperative Invasive Species Management Area



Everglades Cooperative Invasive Species Management Area



CISMA

Everglades Cooperative Invasive Species Management Area

Everglades CISMA Partner Accomplishments



Everglades Cooperative Invasive Species Management Area

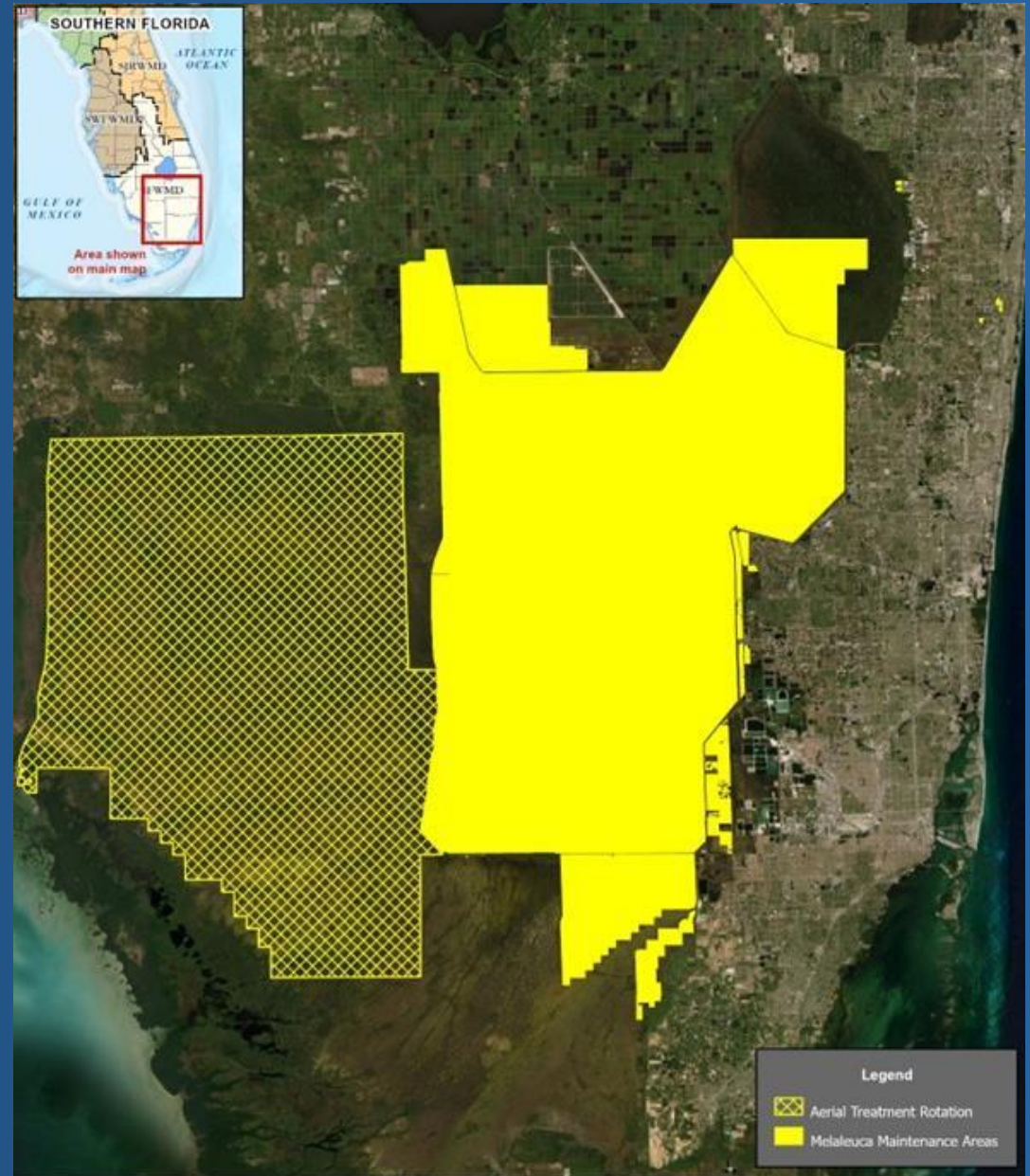
Melaleuca quinquinervia Case Study



Everglades Cooperative Invasive Species Management Area

Melaleuca Maintenance Control

Over 890,000 acres now considered in maintenance control within ECISMA



Pennsuco Everglades Marsh 1998 -2022



Everglades Cooperative Invasive Species Management Area

Farewell Francois Laroche



Everglades Cooperative Invasive Species Management Area

Florida Fish and Wildlife Conservation Commission Invasive Plant Management Section

Funding for Invasive Plant Control

ECISMA Footprint

July 1, 2023 to June 30, 2024

Everglades NP - \$334,008 – 1,996 acres

Loxahatchee - \$2,000,000 – N/A acres

Melaleuca - \$1,000,000 – N/A acres

Miami-Dade - \$97,866 – 88 acres

Broward - \$70,497 – 53 acres

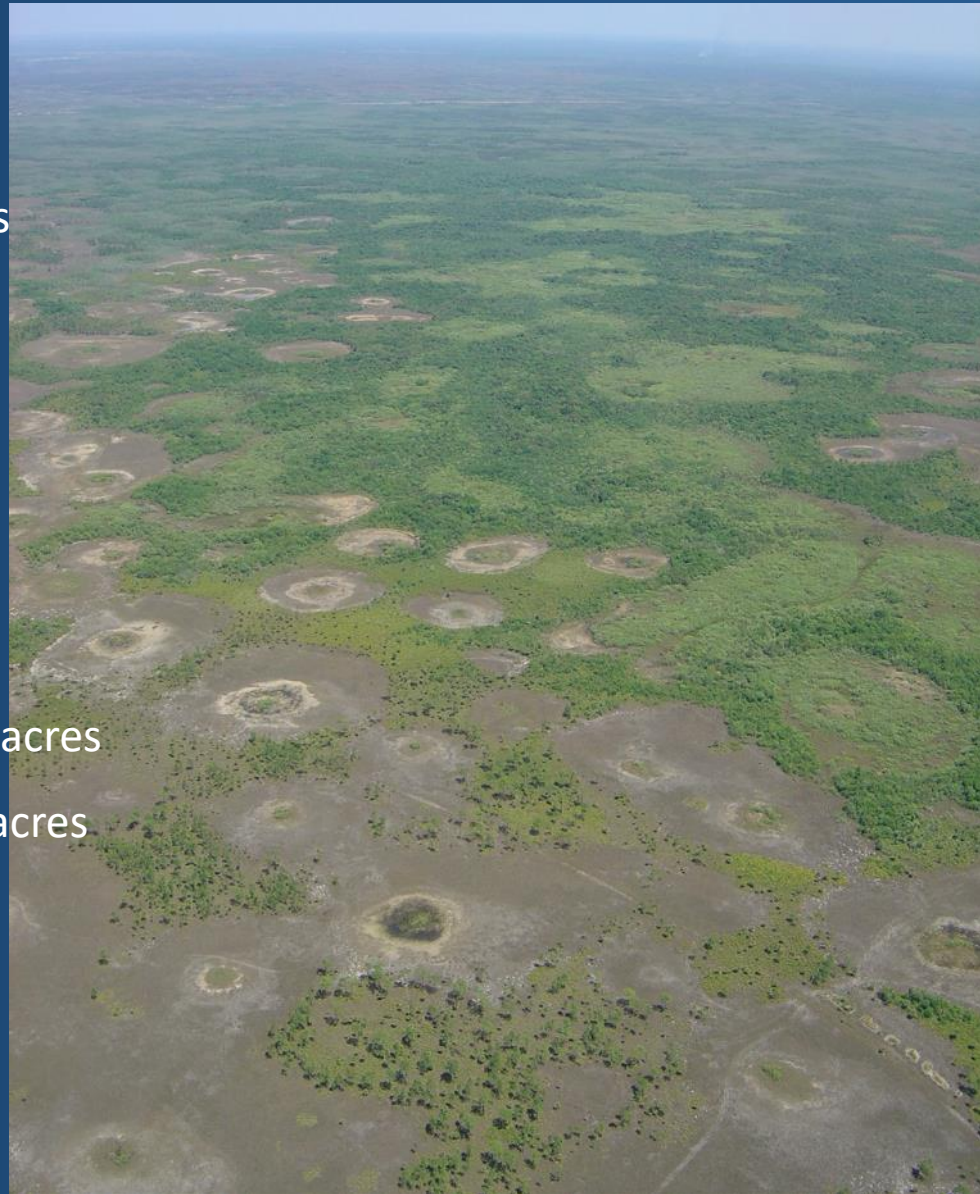
Seminole Tribe – \$126,244 – 636 acres

Big Cypress NP ground - \$86,195 – 281 acres

Big Cypress NP aerial - \$220,000 - N/A acres

DEP - \$96,958 – 313 acres

FWC Funded Research - \$1,250,000



1 Year

37,260+ Acres

\$5,390,789.00

Everglades Cooperative Invasive Species Management Area

ECISMA Partner EDRR Accomplishments

The Eradication of Sacred Ibis



Everglades Cooperative Invasive Species Management Area

The Eradication of Bay Snook



Everglades Cooperative Invasive Species Management Area

The Eradication of Nile Crocodiles



Everglades Cooperative Invasive Species Management Area

The Eradication of the Gambian Pouch Rat?



Everglades Cooperative Invasive Species Management Area

The Extirpation of Homestead Nile Monitor Population?



Everglades Cooperative Invasive Species Management Area

Giant African Land Snail Containment



Everglades Cooperative Invasive Species Management Area

Mexican Gray Squirrel Containment?



Everglades Cooperative Invasive Species Management Area

Spectacled Caiman Containment?



Everglades Cooperative Invasive Species Management Area

Northern African Python Containment?



Everglades Cooperative Invasive Species Management Area

Tropical American Watergrass



Luziola subintegra

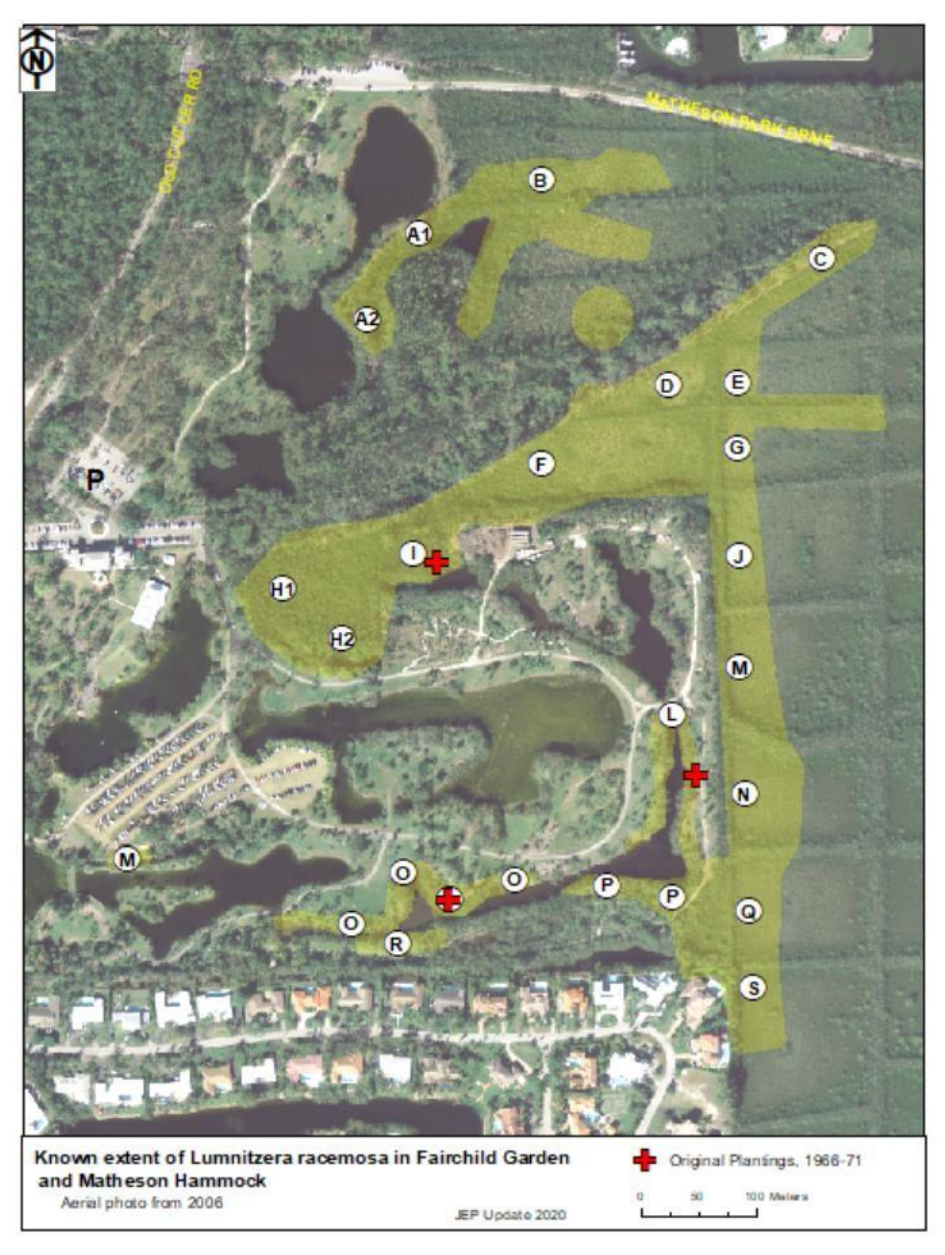
Photo by Jeff Schardt

© 2008 Florida FWCC



Everglades Cooperative Invasive Species Management Area

Lumnitzera racemosa Containment?

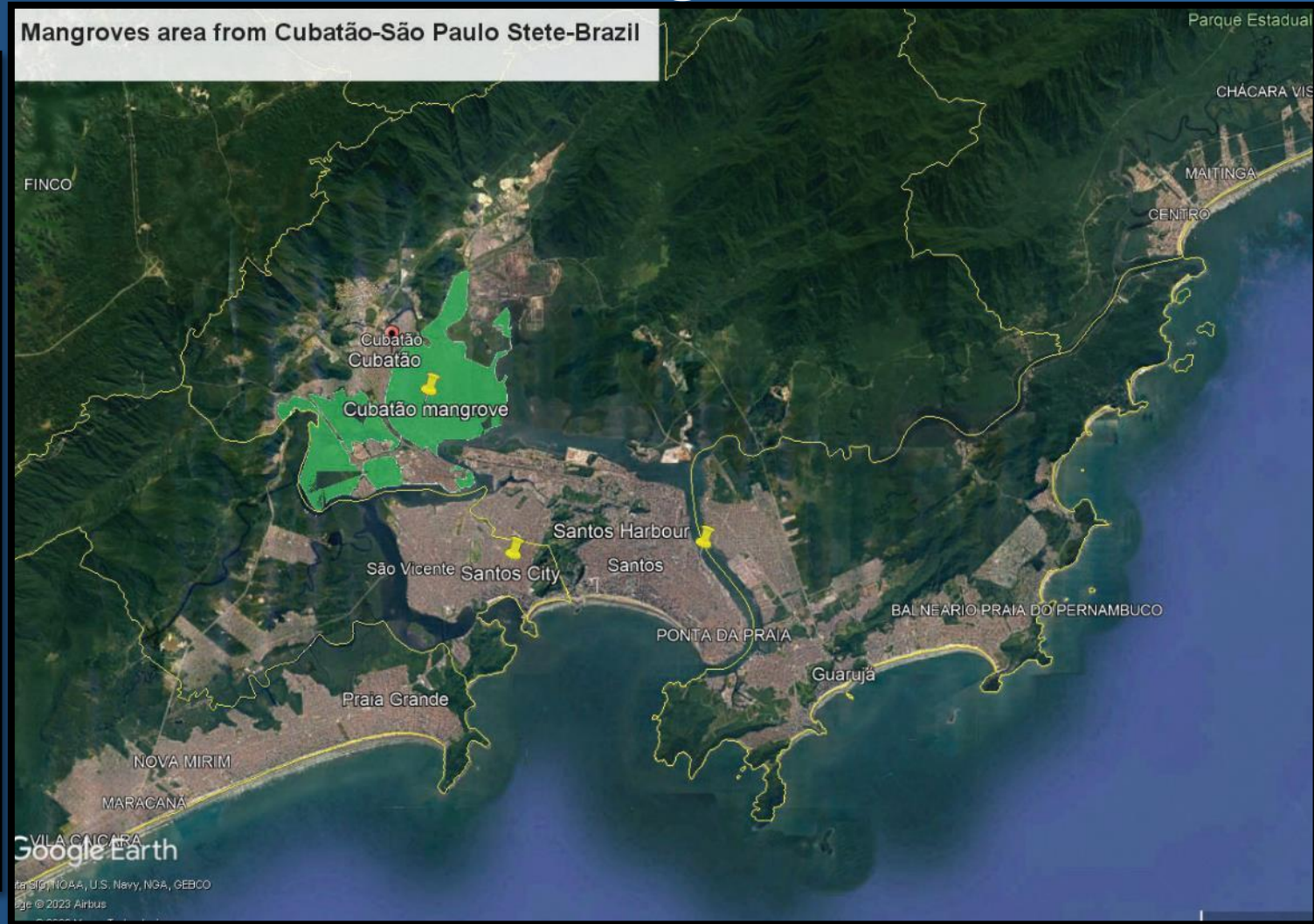


Bruguiera gymnorrhiza Eradication?



Everglades Cooperative Invasive Species Management Area

The Threat of Non-Native Mangroves



Sonneratia apetala in Sao Paulo, Brazil



Everglades Cooperative Invasive Species Management Area

Nypa fruticans, the Mangrove Palm



Fairchild Tropical Botanic Garden



Montgomery Botanical Garden



Everglades Cooperative Invasive Species Management Area

ECISMA Education, Outreach and Workdays



USFWS Python Interns: Jared Stroman and Casey Bradley



TABLE OF CONTENTS

FWC Nonnative Volunteers- Helping Conserve Florida's Ecosystems	1
A New Hyparrhenia in South Florida	2
Invasive Conehead Termites Observed Impacts to Natural Areas and Native Trees in Florida	3
Invasive Ferns and Their Rare Native Lookalikes	6
It Takes A Village	7
Playing Detective for Invasive Tegus in Everglades National Park	8
Burmese Python Seen on Camera Consuming an Endangered Species for the First Time	9
See a snake, save a snake use of external tags to prevent mortality in pythons used in research	10
Spatial Invasive Infestation and Priority Analysis	11
What Else Is Eating the Invasive Burmese Python	12



Newsletter

VOLUME 13 2023-24



Volunteer from the Ft. Pierce Tegu Trapping Project in St. Lucie County.

Florida Fish and Wildlife Conservation Commission's Nonnative Volunteers: Helping Conserve Florida's Ecosystems

By: Zachary Chejanovski, Daniel Young, and Shelby Stanley, Florida Fish and Wildlife Conservation Commission

Volunteers play a crucial role in the conservation of Florida's native ecosystems by assisting the Florida Fish and Wildlife Conservation Commission (FWC) and partners with the control of nonnative and invasive species. Two invasive species that are a major ecological threat to Florida ecosystems are Burmese pythons (*Python molurus bivittatus*) and Argentine black and white tegus (*Salvator merrianae*). The need for control of pythons and tegus is high due to their generalist diets causing negative impacts on native species. Additionally, land managers have difficulty controlling these species due to the vastness of the environments invaded and the species' low detectability. FWC volunteers help with expanding control measures and removal projects for pythons and tegus.

FWC python volunteers are initially trained in the identification, handling,

and safe capture of pythons. This training prepares volunteers to assist staff with visual python surveys on foot or by vehicle. FWC also holds large outreach events, such as the Florida Python Challenge[®], during which volunteers assist at Challenge check stations providing guidance to participants.

FWC tegu volunteers are trained in the deployment and monitoring of live capture traps operated on removal traplines. Since the fall of 2022, FWC volunteers have maintained three traplines as part of a tegu removal project in Ft. Pierce, Florida, removing 876 tegus in total. Before volunteer assistance on this project, the trapline could not be implemented regularly, limiting the number of tegus that could be removed.

An additional avenue for the public to help FWC mitigate the impact of py-

CONTINUED ON PAGE 2

Camila Vallejo, Environmental Educator, Broward County Parks



Everglades Cooperative Invasive Species Management Area

2024 Galaxy Scrub Workday

Bill Thomas, Snake Plant Wrangler



Christen Mason, Outreach Virtuoso



Everglades Cooperative Invasive Species Management Area

Chris Lockhart and Ellen Books, Galaxy Weed Wrangle Coordinators



Everglades Cooperative Invasive Species Management Area

Team Photo, Galaxy Weed Wrangle Snake Plant Team



Everglades Cooperative Invasive Species Management Area



2024 Delray Oaks Workday



Everglades Cooperative Invasive Species Management Area

Northern African Python NISAW Workday



Everglades Cooperative Invasive Species Management Area

Lumnitzera Workdays



Everglades Cooperative Invasive Species Management Area

C-111 Harvesting – SFWMD Hydrilla Harvesting Adjacent to ENP



Jan 22, 2024, 8:56 AM



Everglades Cooperative Invasive Species Management Area

Wetland Restoration Planting



Everglades Cooperative Invasive Species Management Area



Everglades Cooperative Invasive Species Management Area

2024

ECISMA Honorable Mention and Gratitude



Everglades Cooperative Invasive Species Management Area

Miami-Dade County Environmentally Endangered Lands Program



Everglades Cooperative Invasive Species Management Area



Everglades Cooperative Invasive Species Management Area



Everglades Cooperative Invasive Species Management Area



Everglades Cooperative Invasive Species Management Area

2024

Everglades CISMA Partner of the Year



Everglades Cooperative Invasive Species Management Area

McKayla Spencer

Nonnative Fish and Wildlife Program Coordinator
Florida Fish and Wildlife Conservation Commission



Everglades Cooperative Invasive Species Management Area

Thank you, Partners!



UF UNIVERSITY of FLORIDA



Think locally, Act neighborly
invasive species know no boundaries!



FAIRCHILD TROPICAL BOTANIC GARDEN
Exploring, Explaining and Conserving the World of Tropical Plants