

Everglades Cooperative Invasive Species Management Area

Loxahatchee National Wildlife Refuge (Water Conservation Area 1)



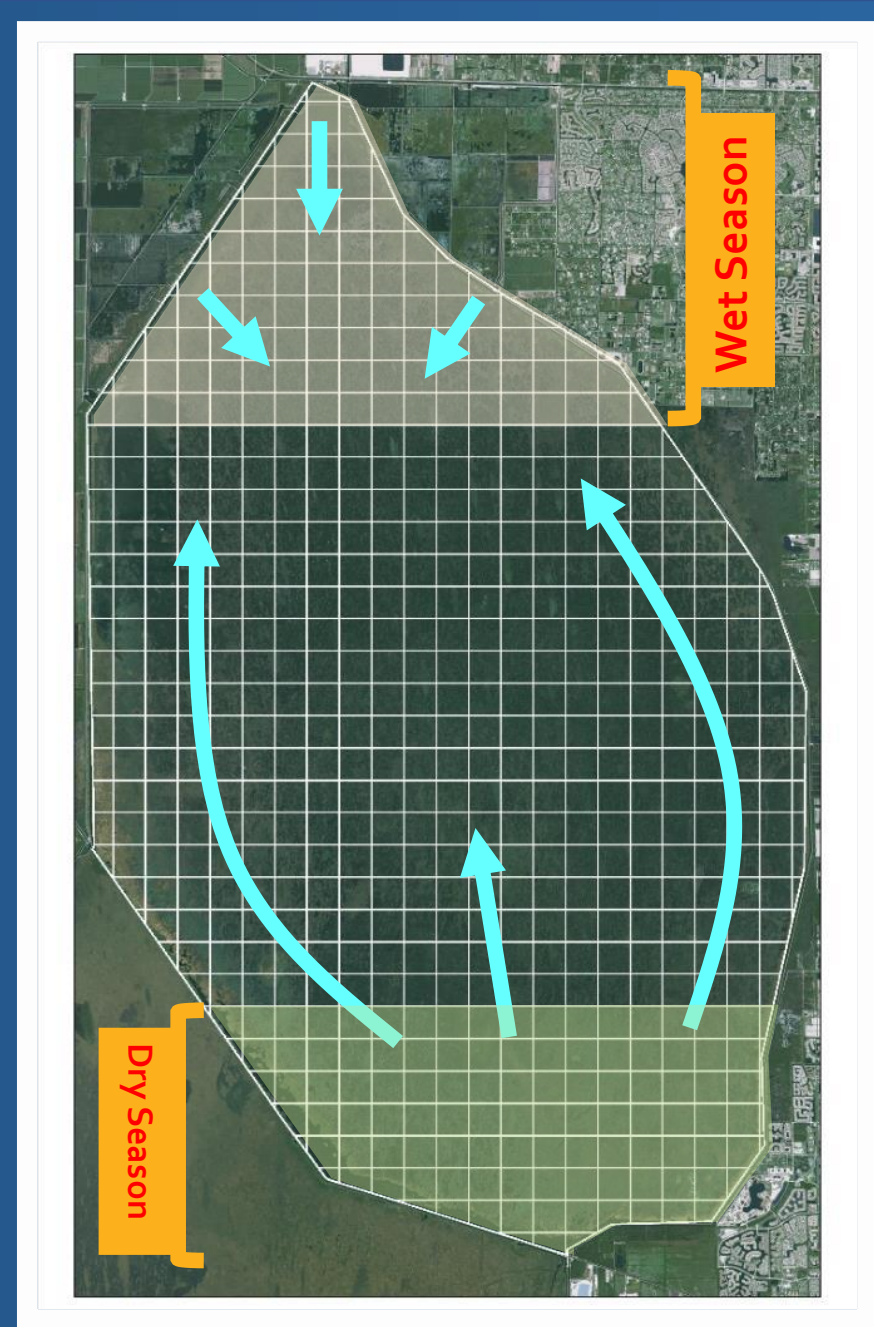
Overview

- Joint effort between SFWMD, FWC, FWS
- Program Goal: Achieve maintenance control of priority invasive plants
- Primary focus is melaleuca and lygodium
 - Also crested *Scleria lacustris*, floating heart, Azolla, and West Indian marsh grass



Strategy

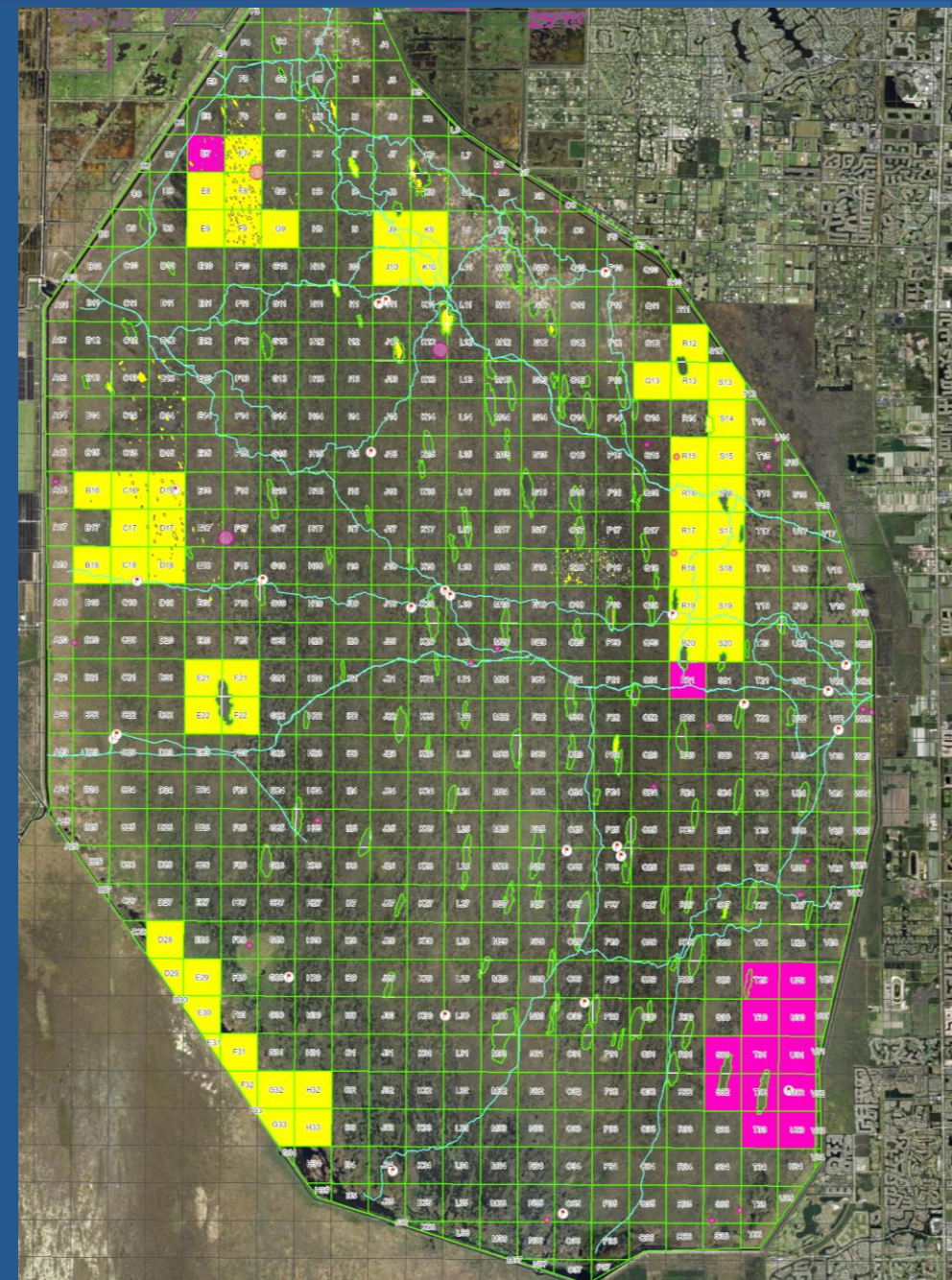
- Utilizing 1 km grid and ground/aerial-based monitoring to assess, plan, and track treatments
- Coordinating herbicide treatments with USFWS burn program
- Take advantage of hydrology to target seasonally accessible areas.
- Categorize large strand tree islands based on canopy status and infestation levels then schedule treatments accordingly.



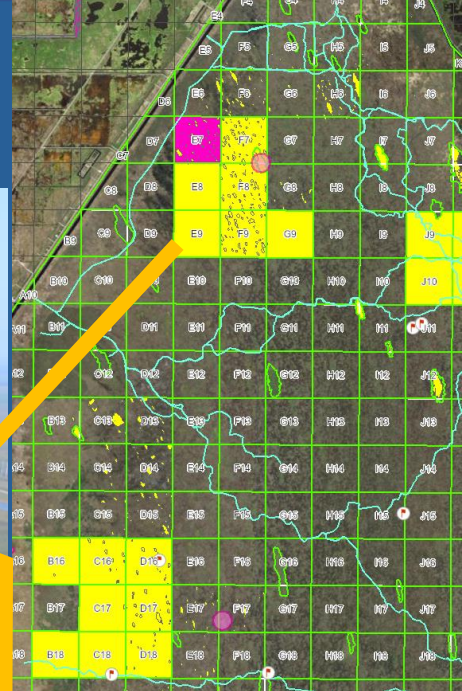
A years update

Species	Acres Covered	Acres Treated
OWCF	1,401	690
Melaleuca	31,141	2,639
Scleria	405	41

- “The Wall” progress
- “last Dance Fire” work
- Aerial application integration



The Wall



- FWC Funded
- 1500 acres of initial Melaleuca

Last Dance Fire area

- USFWS funded project
- Goals
 - Complete all re-treatments
 - Push into untreated melaleuca blocks
 - Get whole block into a contiguous state of maintenance
- Work around protected species
- Keep up yearly work on EDRR species

Bald Eagles nest



Everglades Cooperative Invasive Species Management Area



Initial treatment line



Scleria lacustris work in dead melaleuca heads

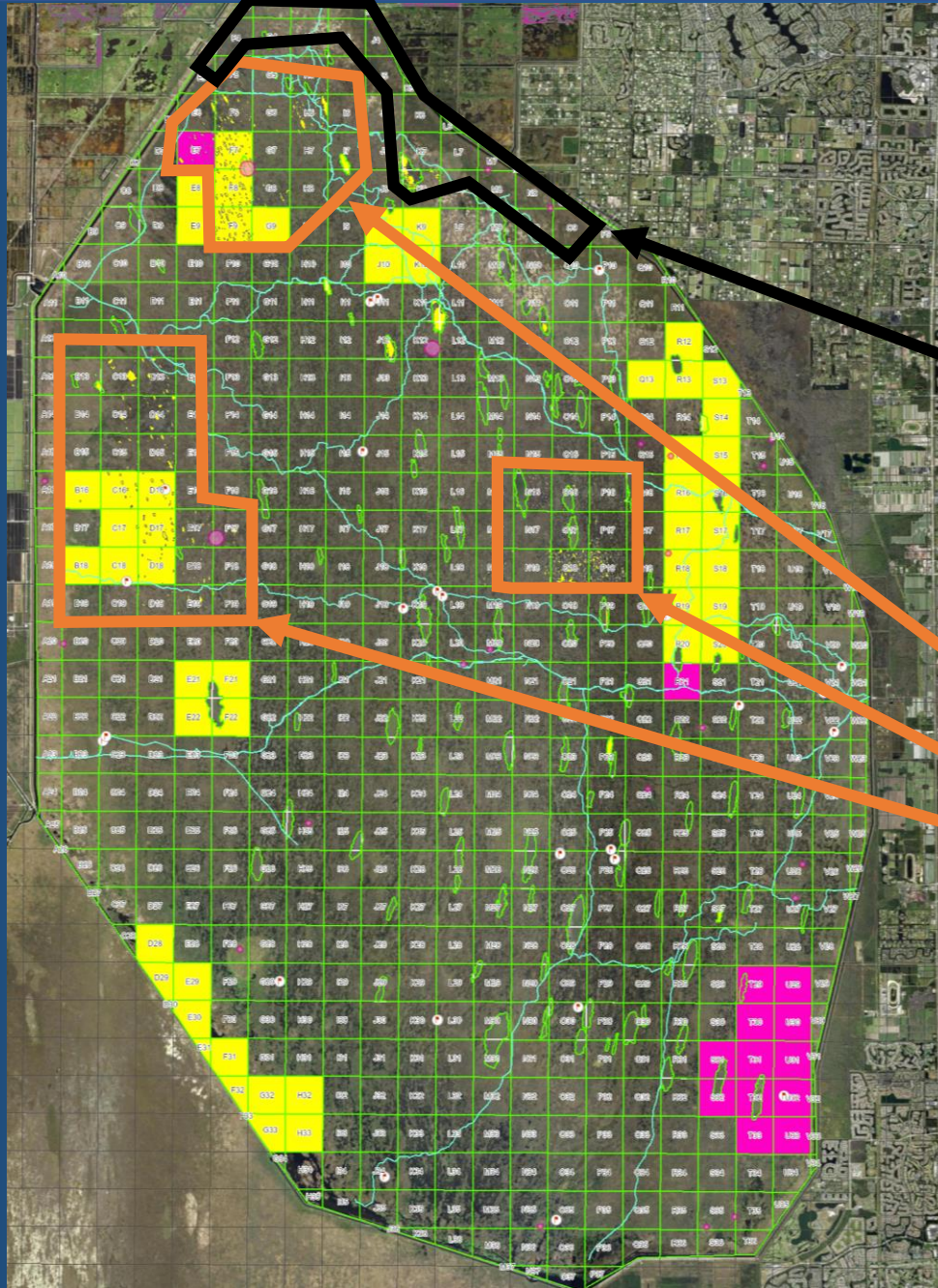


Sawgrass plain melaleuca heads



Aerial treatment

- 20-acre melaleuca trial
 - Glyphosate/Imazapyr treatment at 3qt/3qt per acre
 - 5 acres at 10GPA fine nozzles
 - 5 acres at 10GPA course nozzles
 - 5 acres at 5GPA fine nozzles
 - 5 acres at 5 GPA course nozzles.
- 500 acres of Lygodium treated
 - 20GPA: 120fl Glyphosate, 8fl Dyne-Amic and 4oz Induce
- 150 acres spot sprayed melaleuca
 - Treated at 5%/5% Glyphosate/Imazapyr



Aerial spot spray



Everglades Cooperative Invasive Species Management Area

Aerial Lygodium work



Prescription – 120fl Glyphosate, 8fl Dyne-Amic and 4oz Induce



Everglades Cooperative Invasive Species Management Area

Questions

