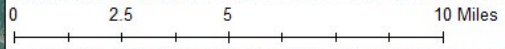
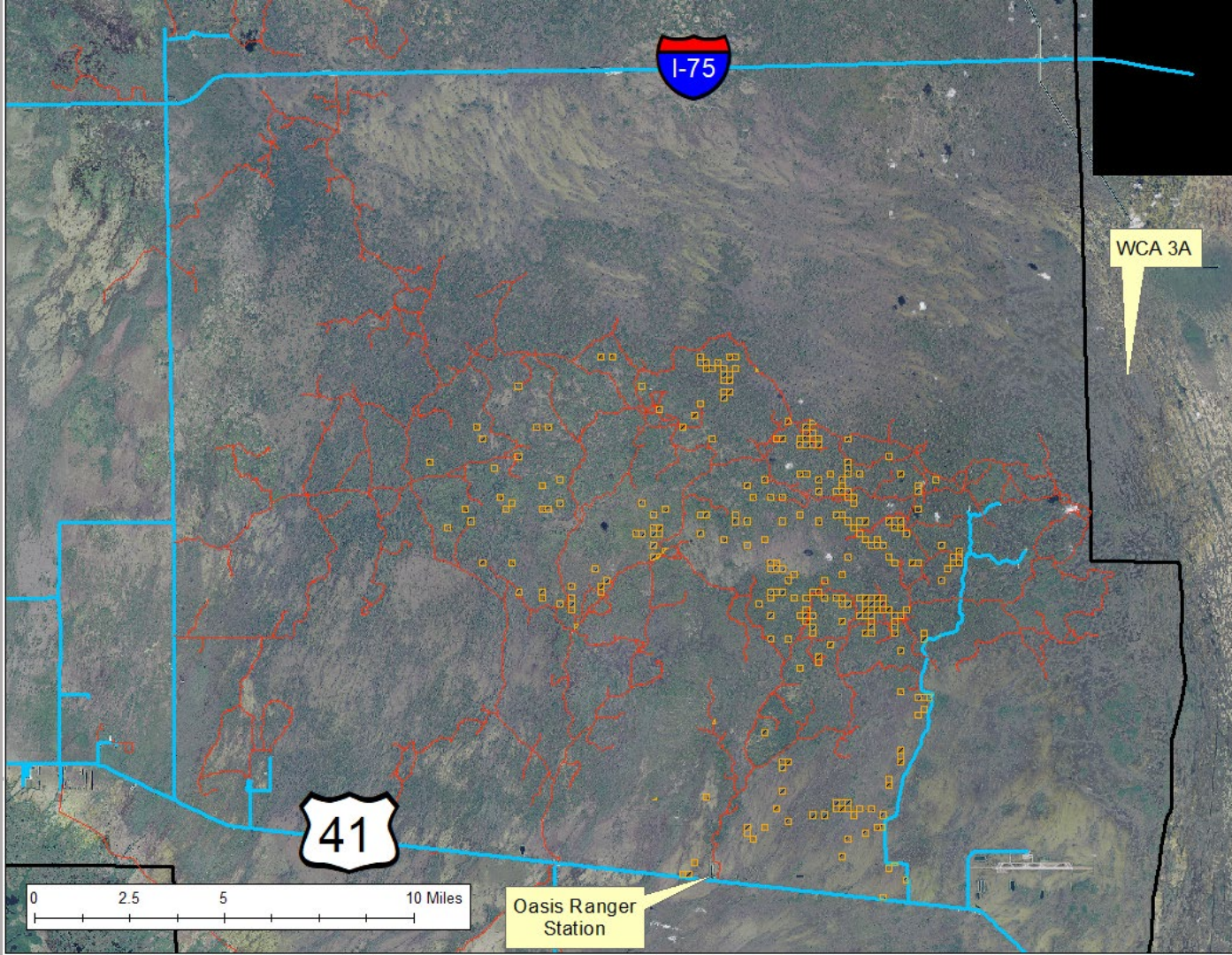




2019 ECISMA Summit

William Snyder, Big Cypress National Preserve

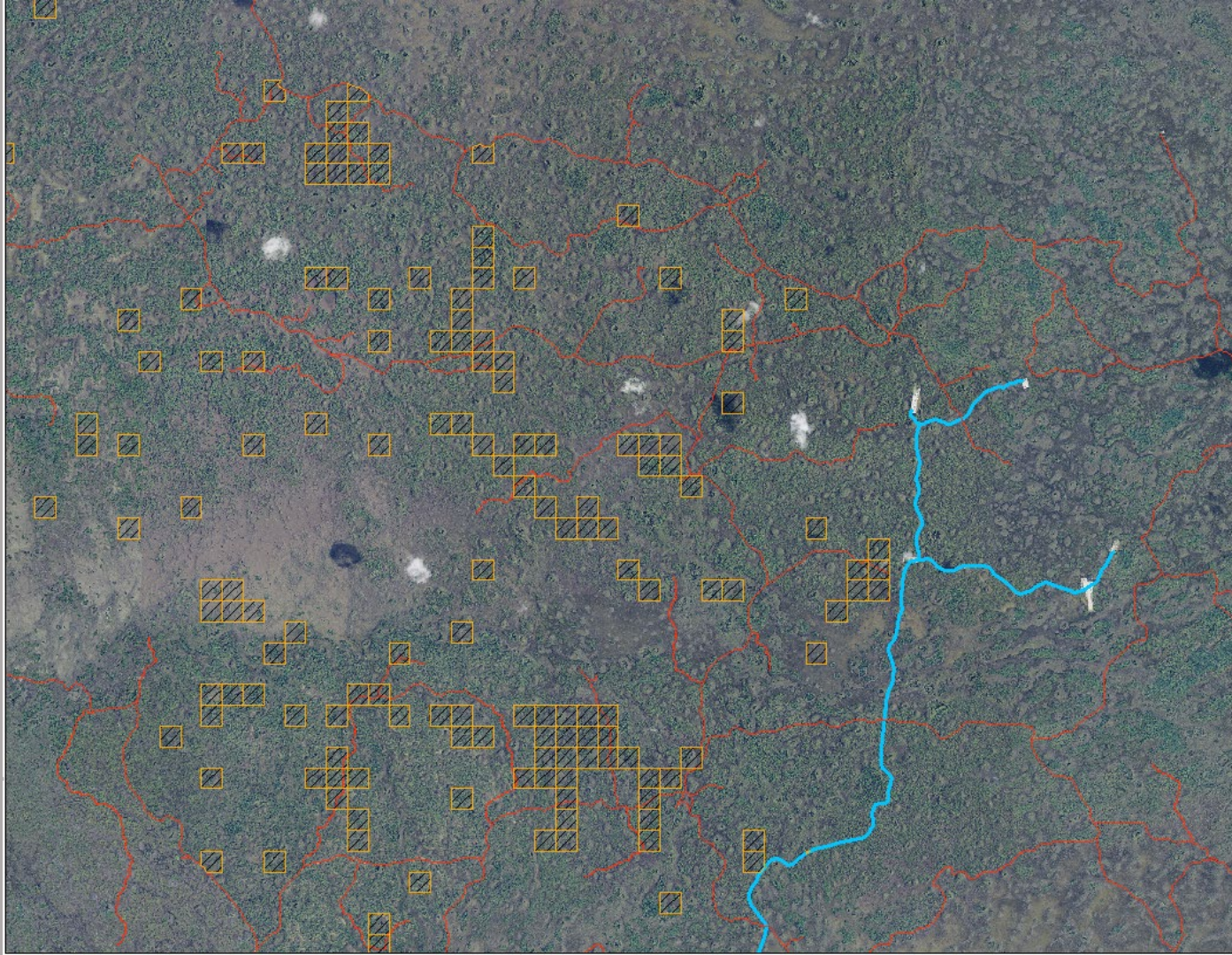
Where did all these melaleuca seedlings come from?



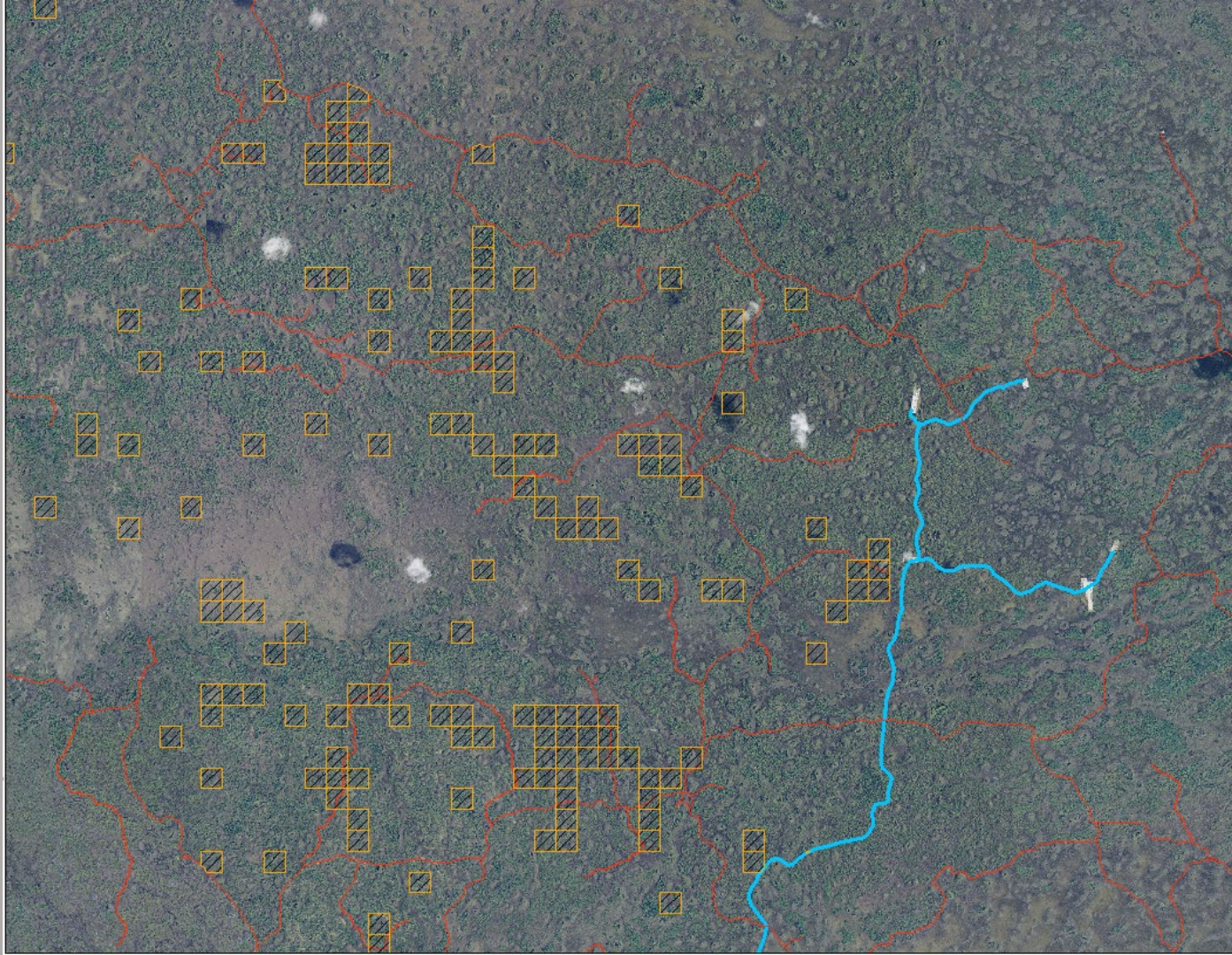
Oasis Ranger Station

WCA 3A

























So, What did we do?

We Considered:

- Abandon area and work somewhere else until we we had a long term solution
- Leave it with the already very heavy Bio-control populations until sites stabilize.
- Perform some limited ground treatments







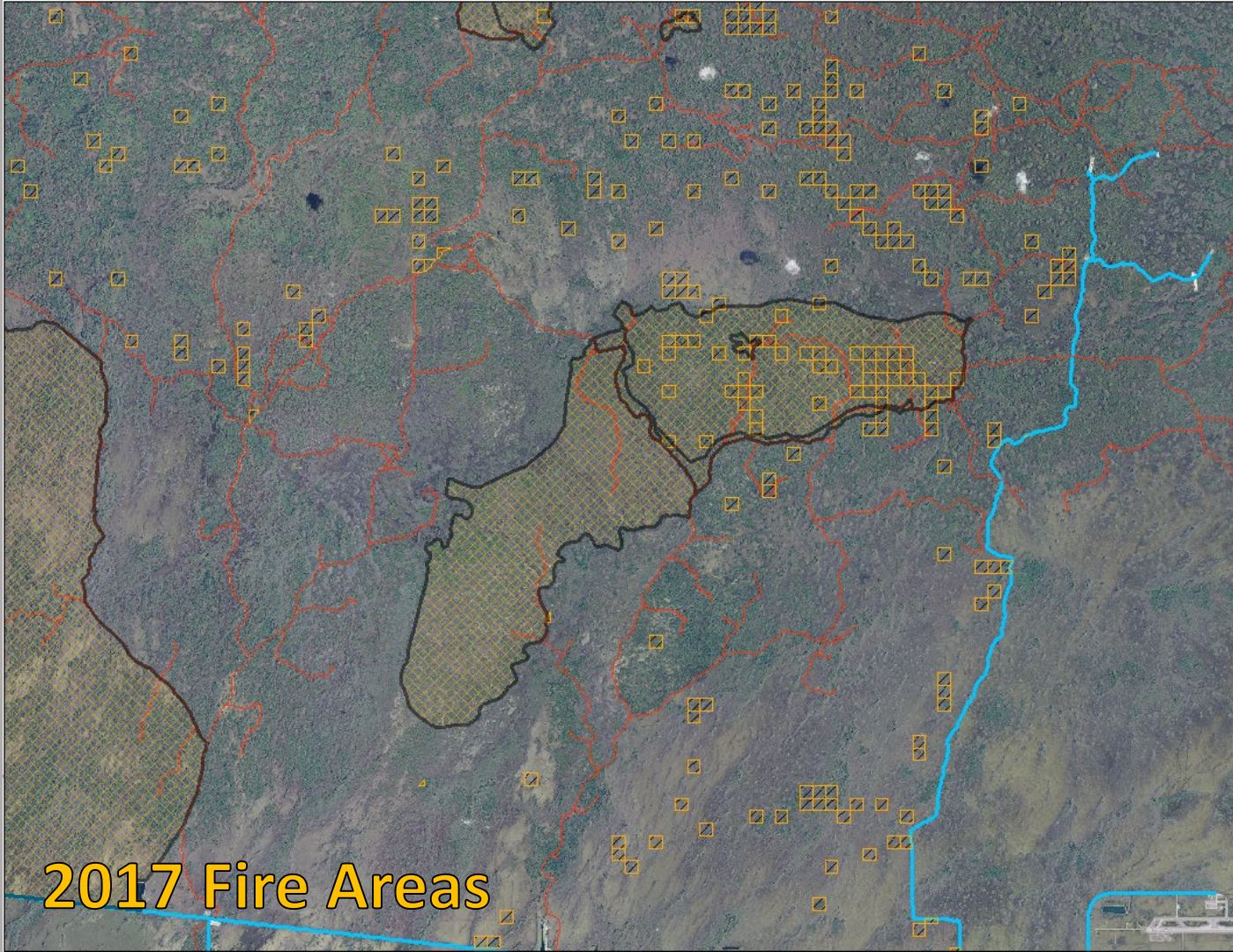




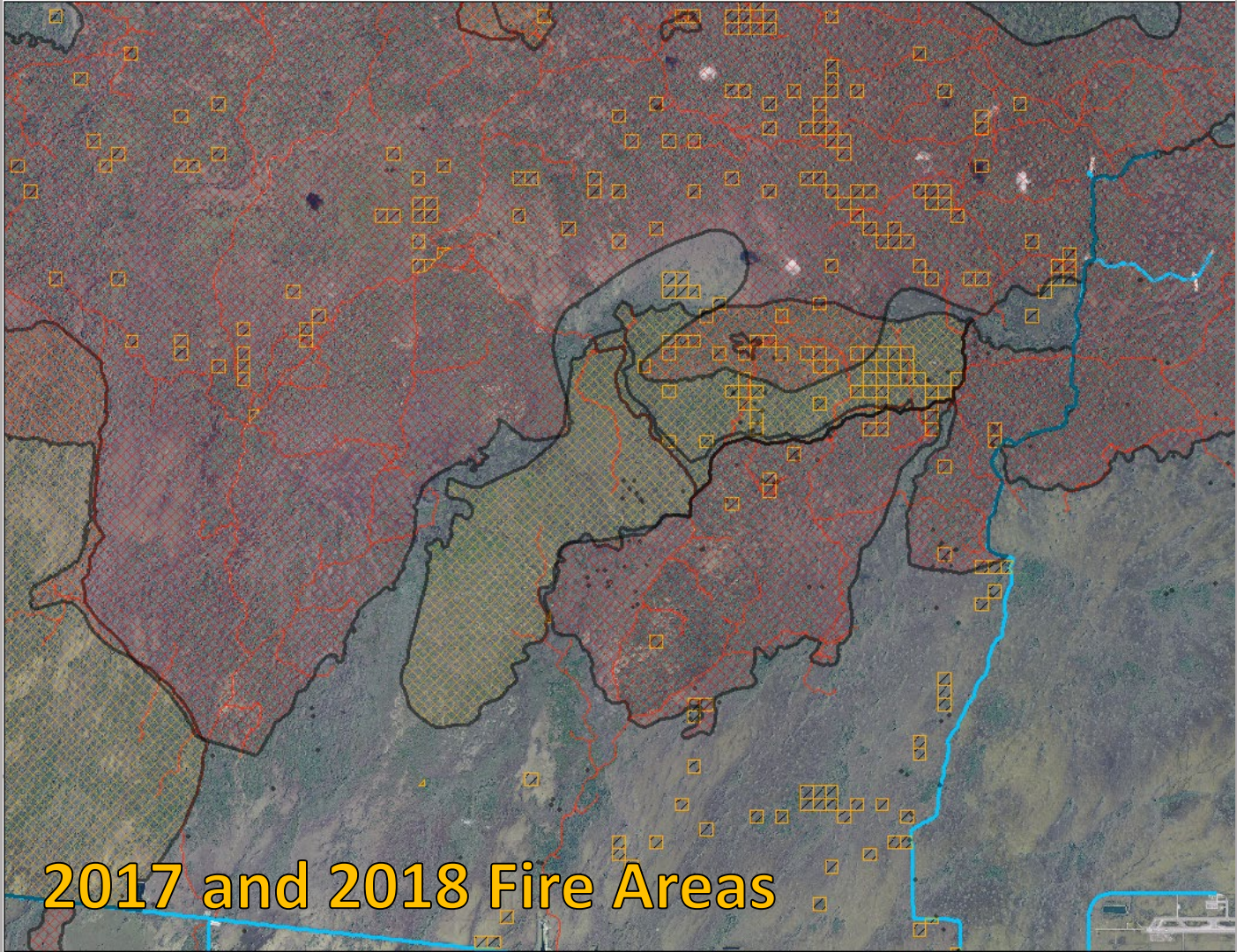
What did all the sites have in common?

- Pineland
- Severly impacted by fire

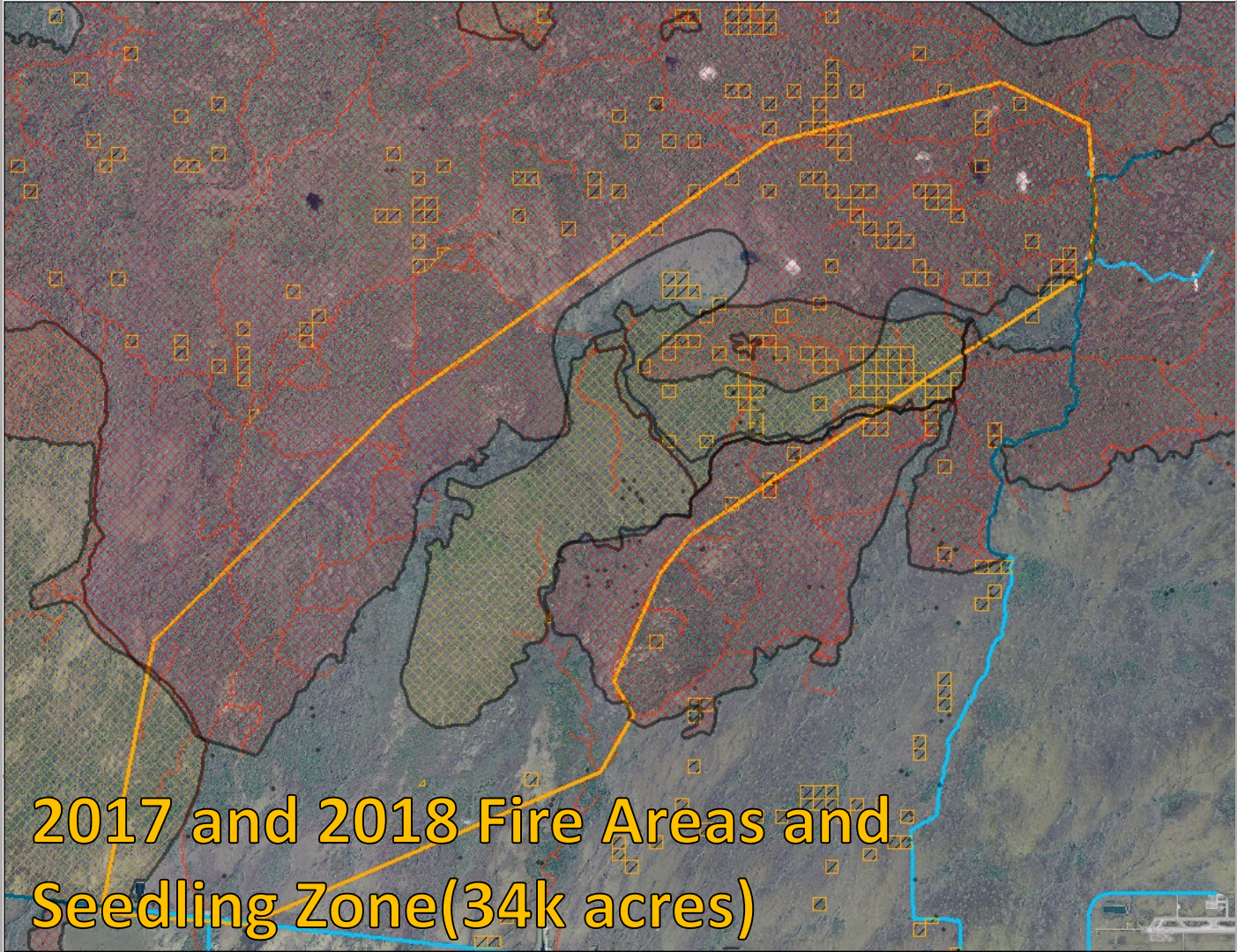




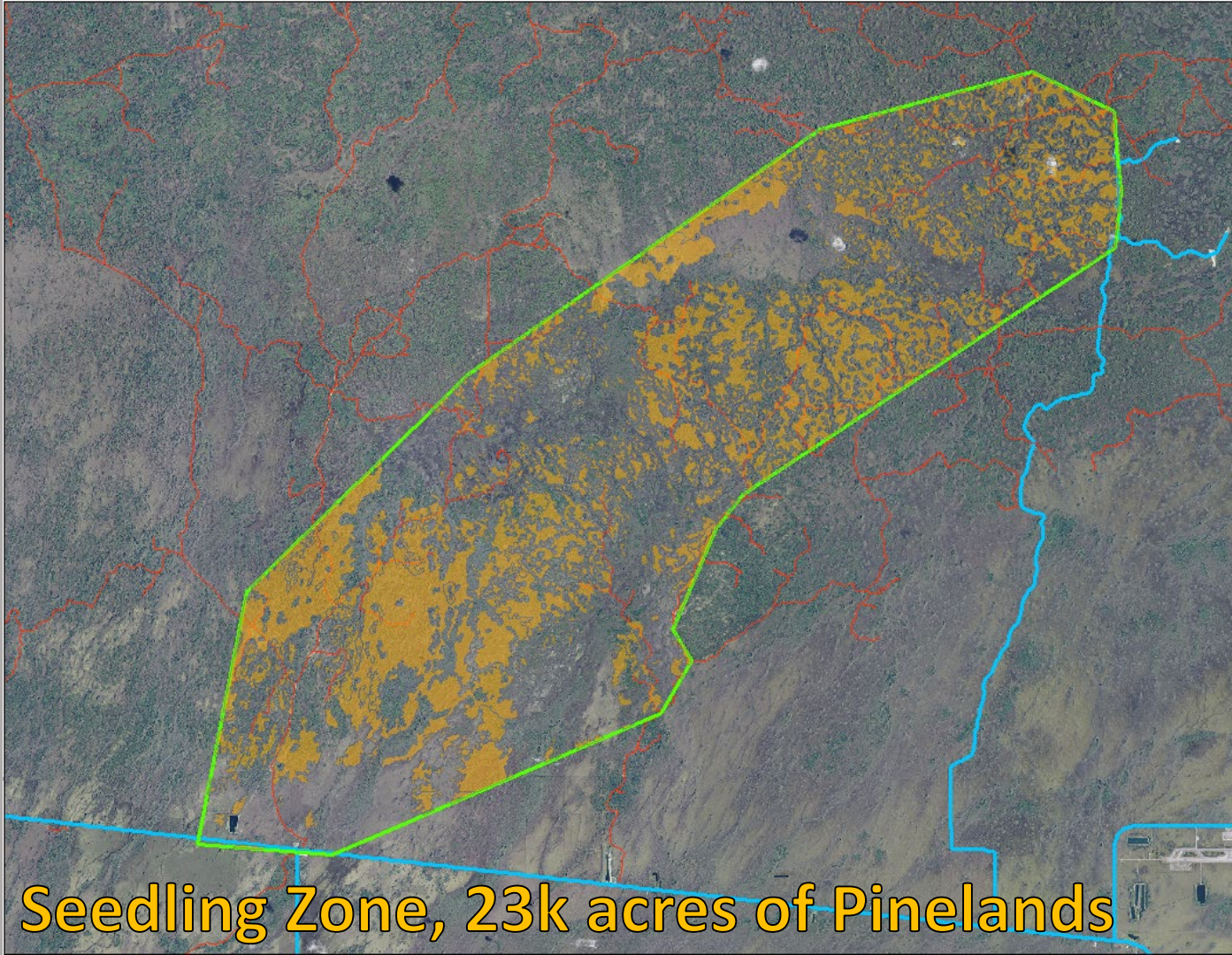
2017 Fire Areas



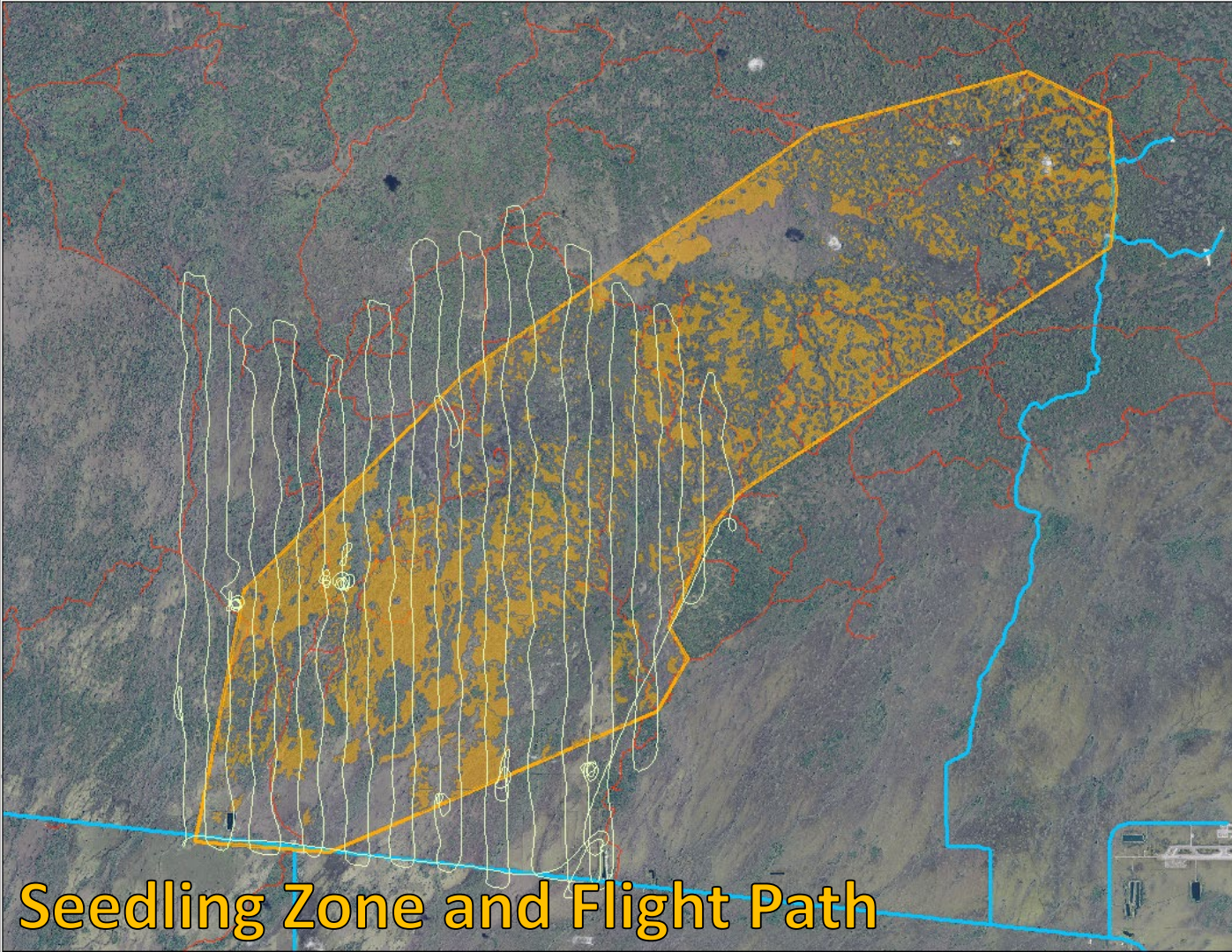
2017 and 2018 Fire Areas



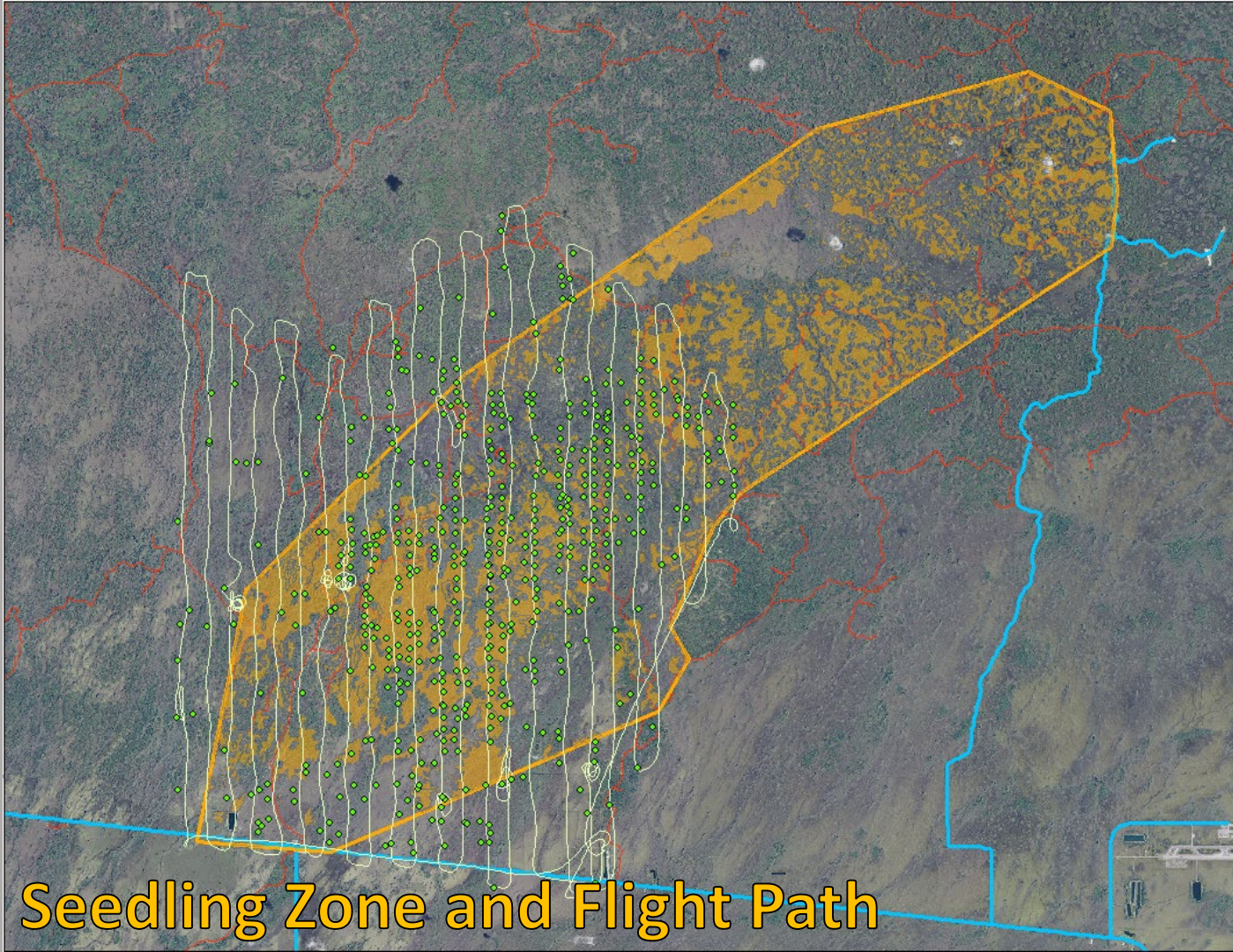
**2017 and 2018 Fire Areas and
Seedling Zone(34k acres)**



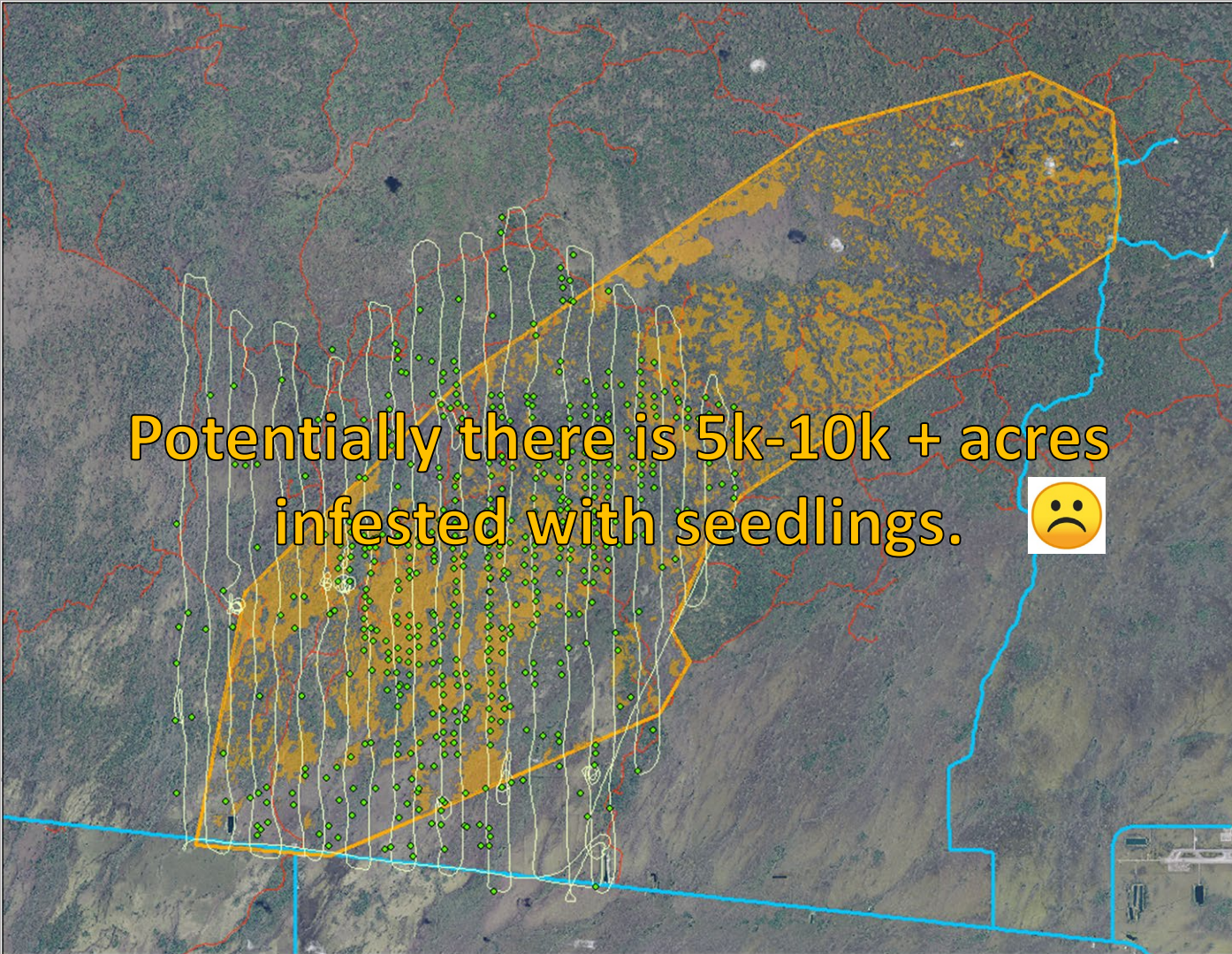
Seedling Zone, 23k acres of Pinelands



Seedling Zone and Flight Path



Seedling Zone and Flight Path



Potentially there is 5k-10k + acres
infested with seedlings. 😞



Potential Solutions moving forward for 2019/2020 and beyond:

- aerial treat with Velpar L
- ground crews
- follow up.

Also- Take advantage of the benefits that the suite of bio-controls present. Give them time to work on the seedlings and reduce stem density.

- We are currently working with USDA-IPRL to measure those effects on-site.
- Treat only the seed bearing trees on the first ground pass- just to try and hold the line...





2019 ECISMA Summit

Questions?

William Snyder, Big Cypress National
Preserve







