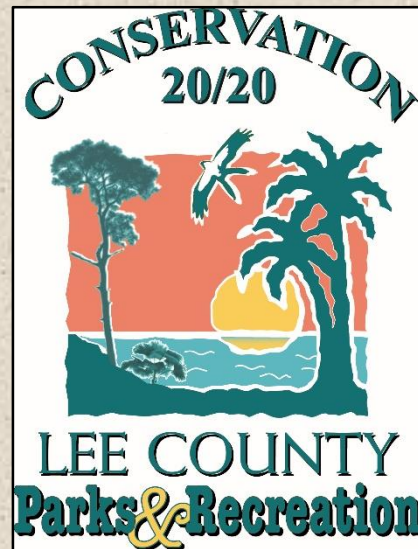


UPDATE ON
CAYRATIA TRIFOLIA
threeleaf cayratia



Cayratia trifolia/*Causonis trifolia*

- Introduction – Identifying *Cayratia* and how it spreads
- Current known locations in Lee County
- Overview of herbicide treatment plot results conducted by Lee County staff

Threeleaf Cayratia Identification

- Evergreen woody vine native to NE Australia, South Pacific, India, SE Asia
- Leaflets ovate/elliptic, serrated margins, sometimes look crenate
- Leaflet petioles up to 6 cm long
- Flowers: small, greenish white cup-shaped calyx, umbellate or corymbose cymes
- Fruits: dark purple-black drupes, ~1-2 cm
- Closely related to *Cayratia japonica* (bushkiller), which has invaded AL, CA, LA, MS, NC, and TX



<https://assessment.ifas.ufl.edu/assessments/causonis-trifolia/>

How Does it Spread?

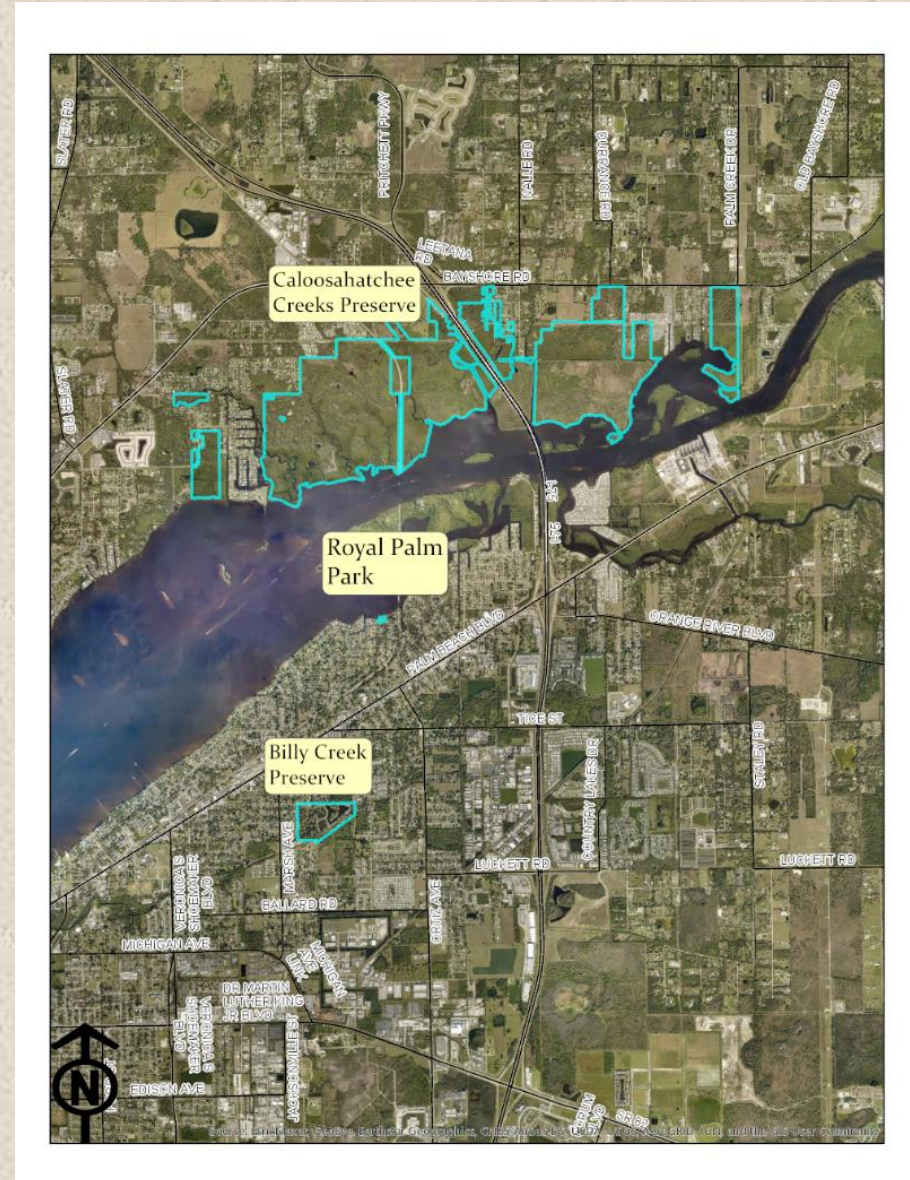
- Use tendrils ending in suction pads to attach to vegetation, structures, etc.
- Fruits are eaten by birds dispersing seeds
- Some seasonal die-back; however the vine can actively grow from pieces of old vines

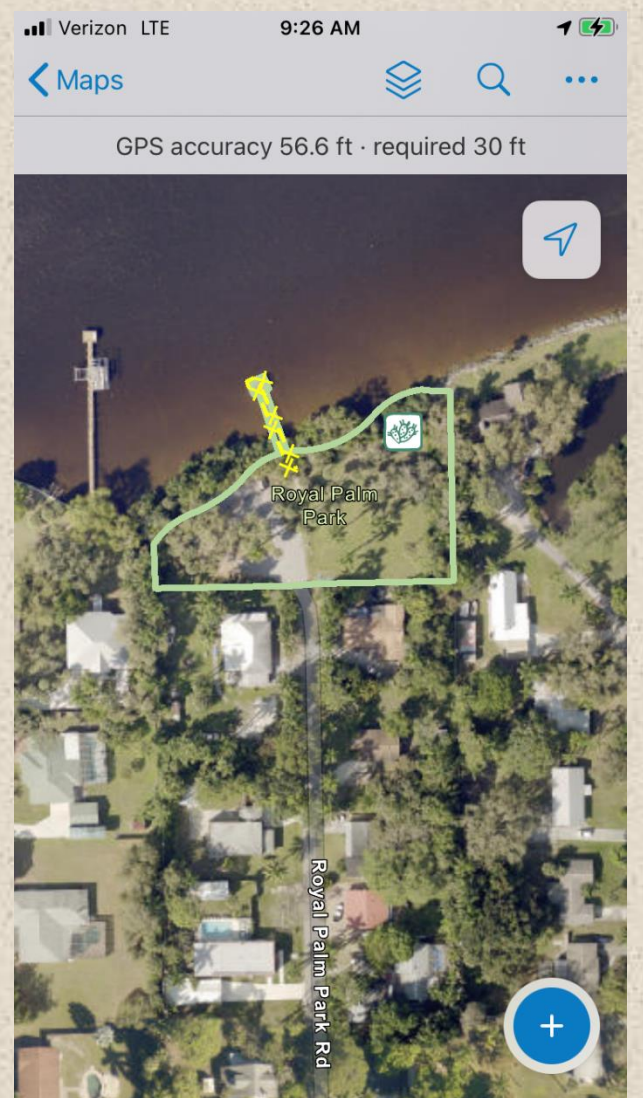
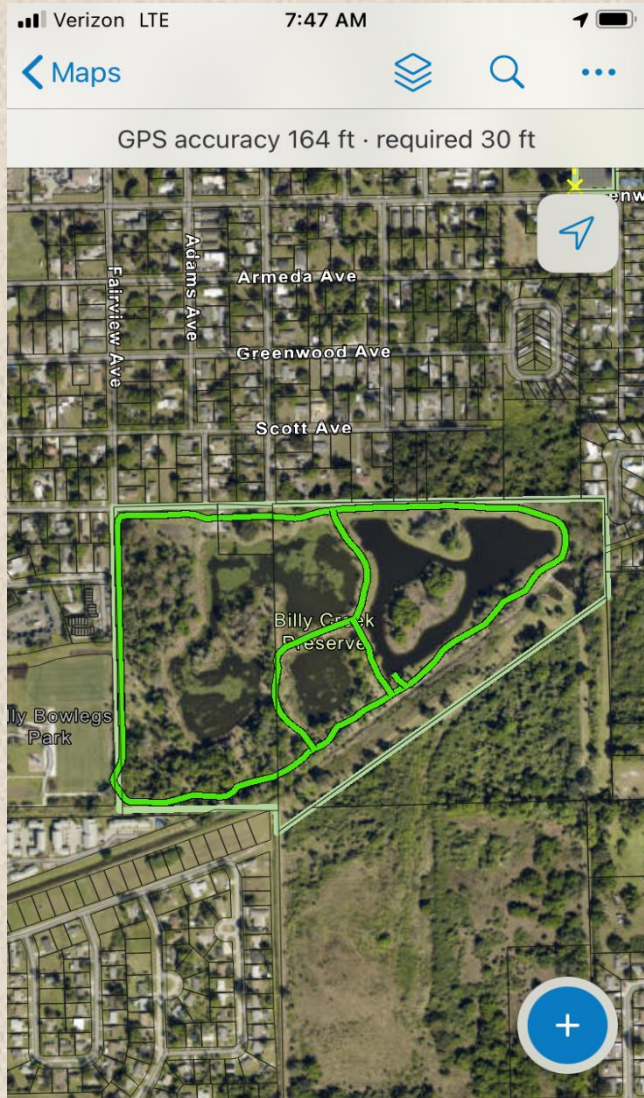


Resources:

- <https://www.fnai.org/Invasives/Causonis%20trifolia.pdf>
- <http://florida.plantatlas.usf.edu/plant.aspx?id=4913>
- Cayratia is currently on SWFL CISMA EDRR list
- <https://www.floridainvasives.org/Southwest/Report/>

Current known Lee County locations



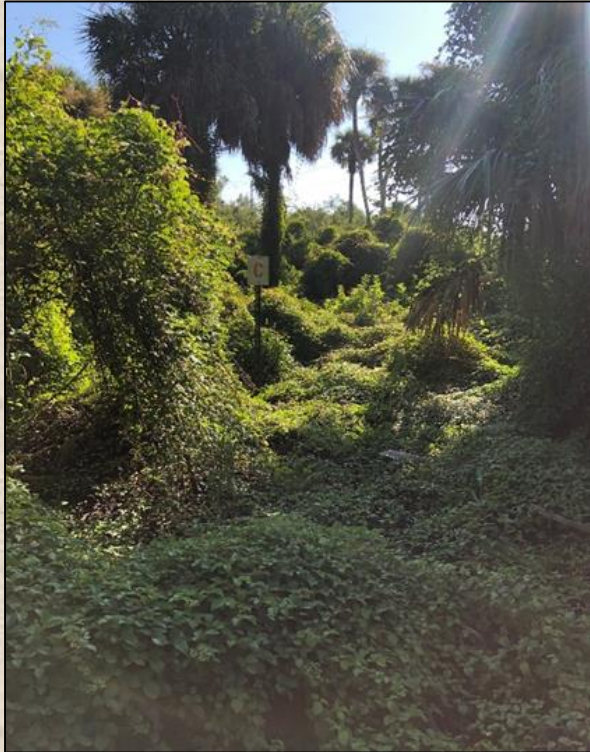


Herbicide Treatment Plots

- Date of evaluation period: 10/01/2019 – 5/19/2020 (7.5 months)
- Four Test Plots (sizes ~ 15' x 20') treatments (with a Control Plot) were completed with a 2 gallon herbicide solution (water, herbicide, adjuvant and dye)
- No follow up treatments were performed during the monthly review site visits



Control- no treatment



Before



After

Plot 1- Method 240SL 0.5% (0.65 oz./gal mix)
95-98% effective



Before



After

Plot 2- Milestone VM 0.5% (0.65 oz./gal mix)
75-80% effective



Before



After

Plot 3- Vista 0.4% (0.5 oz./gal mix)
90-95% effective



Before



After

Plot 4- 2, 4-D (Weed Destroy) 0.8% (1 oz./gal mix)
60-65% effective



Before



After

Plot	Percent Success Rate	Herbicide	Comments (non-target, etc.)
1	~95-98	Method 240SL 0.5% (0.65 oz./gal mix)	Treatment most effective against this vine. This herbicide is designed to not affect grasses/sedges, but have long-lasting control of other woody & herbaceous plants.
3	~90-95	Vista 0.4% (0.5 oz./gal mix)	Effective. Not many native plants in the plot to begin with which makes it seem like the area was impacted by herbicide spraying.
2	~75-80	Milestone VM 0.5% (0.65 oz./gal mix)	Not much non-target, permanent damage occurred to native plants. Not as effective on treating the vine.
4	~60-65	2, 4-D (Weed Destroy) 0.8% (1 oz./gal mix)	The only <i>aquatic</i> labelled herbicide tested; Least overall control of vine.
Control		N/A	Actively growing after seasonal die off.

Site Conditions Feb. 2021





QUESTIONS?

