

ECISMA and FWC exotic fish activities

Kelly Gestring

Nonnative Fish and Wildlife Program

Florida Fish and Wildlife Conservation Commission



ECISMA 2015 Nonnative Fish Round Up



- Had 51 registrants in Dade, Broward, and Collier counties; 34 weighed in fish (new record!)
- Weighed in 544 lbs of fish (1,062 fish, 15 different species)
- Slam winner caught 6 species
- Mayans caught by the most anglers
- Mayans, Midas, Sailfin Catfish by weight; Mayans, Midas and Spotted tilapia by numbers
- No “new” species but pacu, hornet tilapia, banded cichlid
- More results and pictures at: evergladescisma.org/

Big thanks to Tony Pernas, Shea Bruscia, Ian Bartoszek, Rory Feeney, Murray Stanford, Jake Edwards and ??



EV

Nonnative Fish Round Up Challenges/Successes

What to do with unwanted fish?

Thought we had a charity and gator farm lined up but both were no-shows

Tilapia and Mayans OK, Sailfin Catfish
No Way!



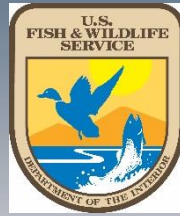
Had more sponsors and increased advertisement!

Boy Scout leaders expressed interest in next year's event.

Work with FWC Volunteer Coordinator

EVERGLADES CISMA

2014 Fish Chat/Fish Slam



1-day Fish Chat In November to share information on ongoing studies and discuss nonnative fish issues.

Day 2 - 8 teams using a variety of gear types sampled nonnative fish from selected areas of Miami-Dade.

Targeted distribution of silver catfish, bay snook and marbled pim and areas not frequently sampled for nonnative fish.

Collected 16 species of exotics but no new species. Documented range extension of Nile tilapia.

Data entered into the Nonindigenous Aquatic Species (NAS) data base and fish sent to Florida Museum of Natural History as voucher specimens.



Photos courtesy of Pam Schofield (USGS)



1st Annual
Nonnative Fish

Catch-Click-Submit
CONTEST

February 21-March 1, 2015
 EDDMapS.org ■ IveGot1.org

For contest rules go to:
floridainvasives.org/CatchClickSubmit/

So grab your fishing gear, a camera, and enter the contest. You'll be having fun and helping out our natural resources at the same time!

CISMA
 Florida's Cooperative Invasive Species Management Area

FLORIDA FISH AND WILDLIFE CONSERVATION COMMISSION

Fish art by Diane Rome-Feibes

Objectives

1. Document distribution of nonnative fish through EDDMapS
2. Increase public awareness
3. Promote consumptive use

Results

1. 13 anglers submitted 35 reports
2. 171,000 people on Facebook, 4,000 likes and shares
3. News release reached 9,000 media outlets, several articles and news stories



Photo courtesy of
 Dillon Gardner

Snakehead Round Ups

2015 Tournament Results

4 tournaments

175 Anglers

595 Bullseye Snakehead

1,880 pounds

\$37,439 socioeconomic benefit

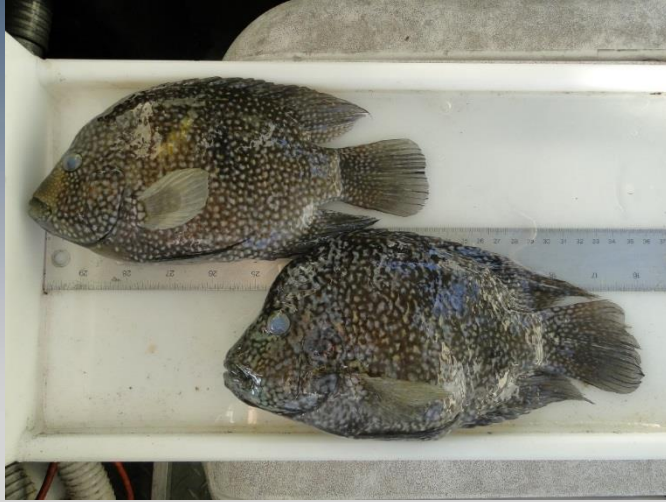


New IGFA World Record
15 pounds, 40 inches

Photo courtesy of D. Bienek



EDDRR



Pearlscale cichlid female (top) and male (bottom)

Bullseye Snakehead Introduction



2 pair observed, 1 adult removed. Several anglers trying to catch and remove them.

No evidence of reproduction.

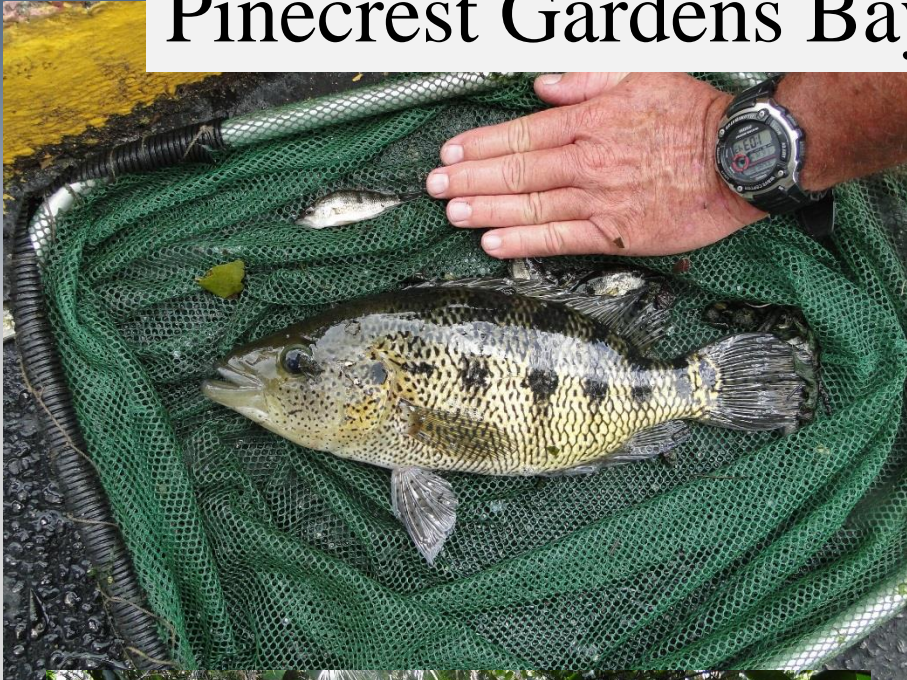
Very healthy largemouth bass population

Not connected to adjacent waterbodies

2 sites in Boca Raton this year.



Pinecrest Gardens Bay Snook Removal





First Ever ECISMA Nonnative Fish Project!!

15 people collected 8 species of exotics weighing 302 lbs, primarily spotted tilapia and bay snook.

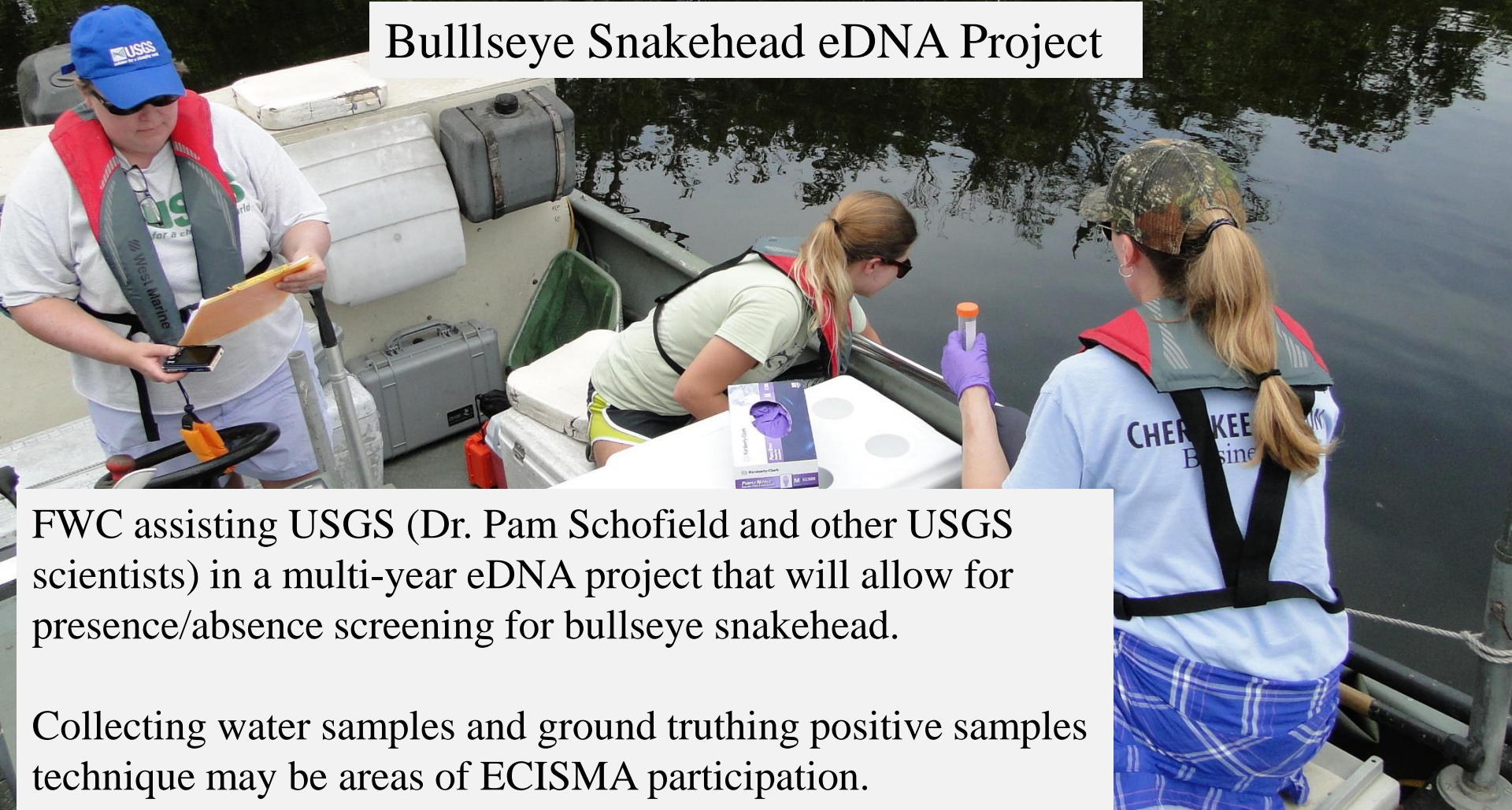
Outlet pipe sealed, no evidence of escapement

Collect Bay Snook for Lower Lethal Temperature study (Jeff Hill UF/IFAS)





Bullseye Snakehead eDNA Project



FWC assisting USGS (Dr. Pam Schofield and other USGS scientists) in a multi-year eDNA project that will allow for presence/absence screening for bullseye snakehead.

Collecting water samples and ground truthing positive samples technique may be areas of ECISMA participation.

Asian Swamp Eel Range Expansion

Upper Peace River



Source? Little Manatee and Manatee River tribs?

How did they get here? Live fish market release? High water event connecting Little Manatee or Manatee River populations?

Run DNA to determine if from one of three known Florida species. Most likely from Tampa area population.

Paraneotroplus sp. (Blackbelt cichlid)

West Palm Beach Canal (C-51) population



This month initiated 12-month life history study: stomach contents (size and seasonal differences), fecundity, GSI (spawning), etc.

Stomach contents primarily algae and mussels, 1 large water beetle

Collaborate with Dr. Pamela Schofield (USGS) to conduct Lower Lethal Temperature



Vamos a Pescar Miami!



Thanks to all who participated in
these activities!



THE END!

EVERGLADES CISMA