

12th Annual Everglades Invasive Species Summit



Everglades Cooperative Invasive
Species Management Area

EVERGLADES CISMA



CISMA Partners

MOU Signatories

South Florida Water Management District

Miami-Dade County

US Fish and Wildlife Service

US National Park Service

Army Corps of Engineers

Florida Fish and Wildlife Conservation Commission

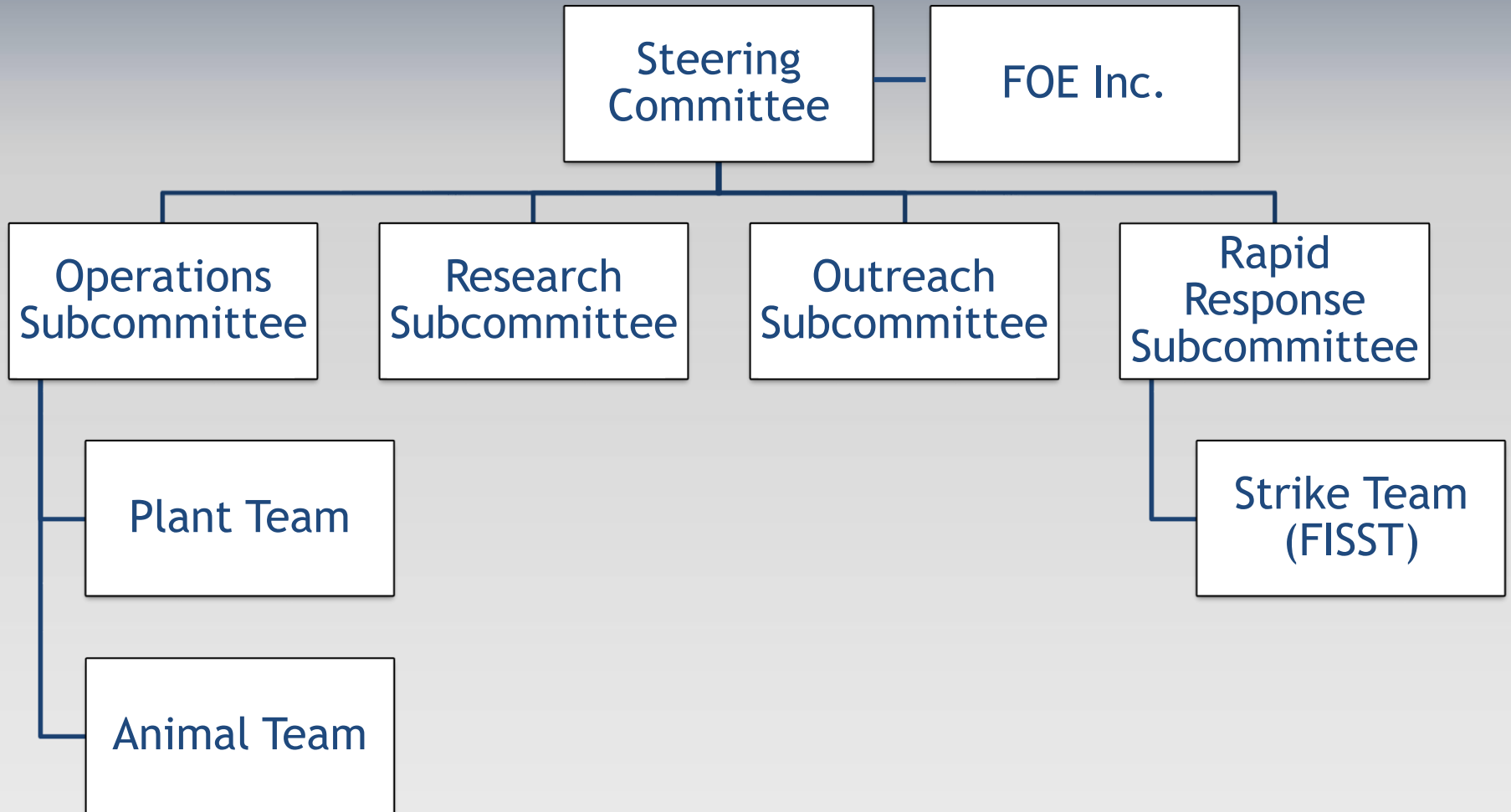
Partners

Broward County, The Nature Conservancy, University of Florida, Department of Agriculture and Consumer Services, Florida Department of Environmental Protection, U.S. Geological Survey, Florida Department of Transportation, Florida Power and Light, Miccosukee Tribe of Indians of Florida, Seminole Tribe of Florida, U.S. Department of Agriculture, U.S. Department of the Interior, Florida Department of Transportation, Fairchild Tropical Botanic Garden, Kampong Tropical Botanic Garden, the Everglades Foundation, Auburn University, Palm Beach County

EVERGLADES CISMA



Everglades Cisma Organizational Chart



Next Steering Committee Meeting

October 14, 2015

University of Florida

Ft. Lauderdale Research and Education Center

EVERGLADES CISMA

Bay Snook Rapid Response



EVERGLADES CISMA



EVERGLADES CISMA



EVERGLADES CISMA



EVERGLADES CISMA



EVERGLADES CISMA



EVERGLADES CISMA

1st Annual Florida CISMA Fall HALLO-WEED Count



What: First Annual Florida CISMA Fall “Hallo-Weed” Count!!

Who: Five Florida CISMAs have stepped up to pilot a statewide survey method: Six Rivers, Heartland, Southwest Florida, Everglades and Suncoast CISMAs.

Where: Various locations within each CISMA, focusing on cogongrass and select CISMA Early Detection/Rapid Response plant species

When: One to two days only, during the two week window around Halloween = October 26 through November

Why: To utilize the CISMA network to implement an assessment method that will provide information on the distribution, trends, and magnitude of problem of invasive plants in Florida.

How: Each CISMA has a coordinator. For ECISMA, Christen Mason will be coordinating surveys.



CISMA Coordinators:

Everglades: Christen Mason, cmason@sfwmd.gov

Six Rivers: Brooke Saari and Erica Laine, bsaari@ufl.edu and erica.laine.ctr@us.af.mil

Heartland: Brendan Myers, thescarydoor@gmail.com

Southwest: Dexter Sowell, Dexter.Sowell@freshfromflorida.com

Suncoast: Rosalind Rowe, Rosalind.Rowe@dep.state.fl.us

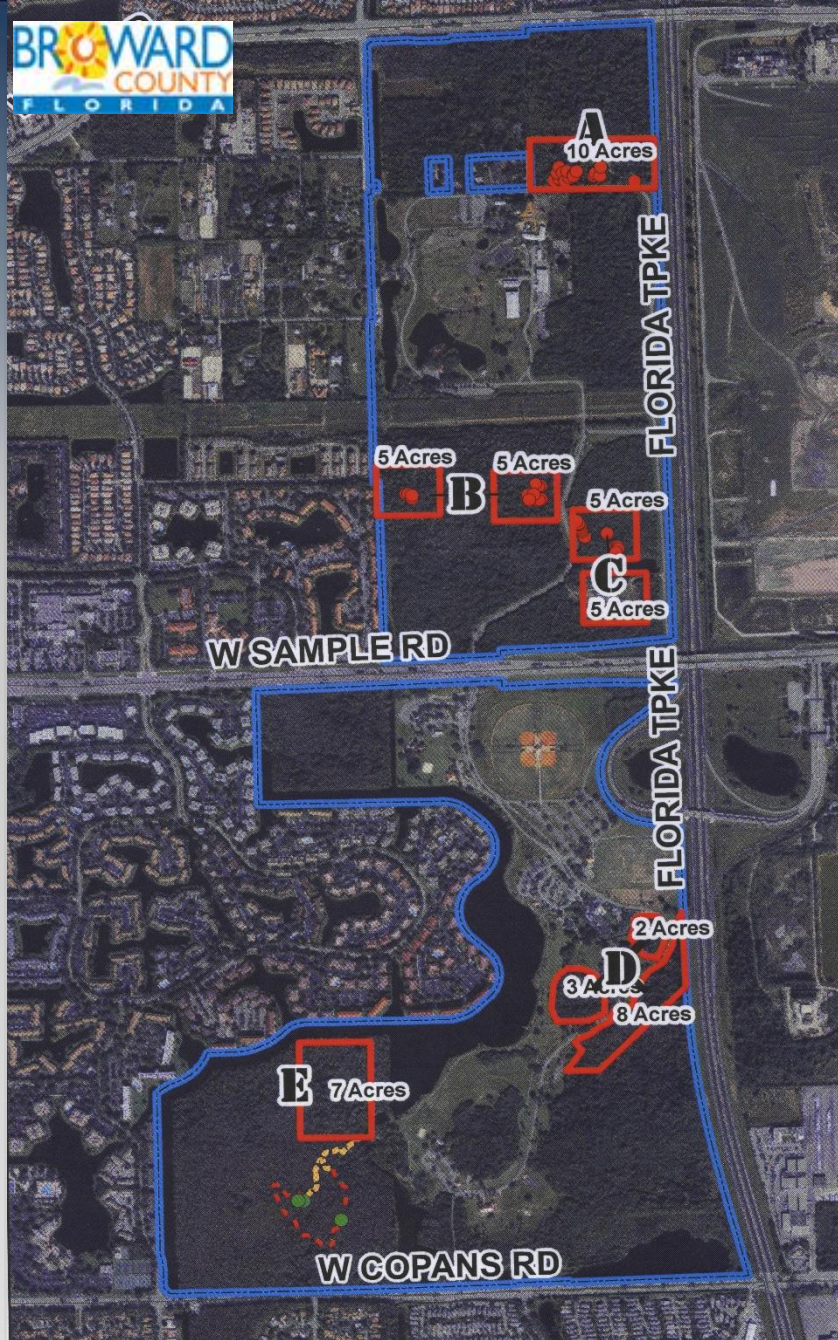


EVERGLADES CISMA

Dalchampia scandens



EVERGLADES CISMA



Heteropterys beecheyana



EVERGLADES CISMA

At the Barnacle State Historic Site



EVERGLADES CISMA

Mikania micrantha



EVERGLADES CISMA



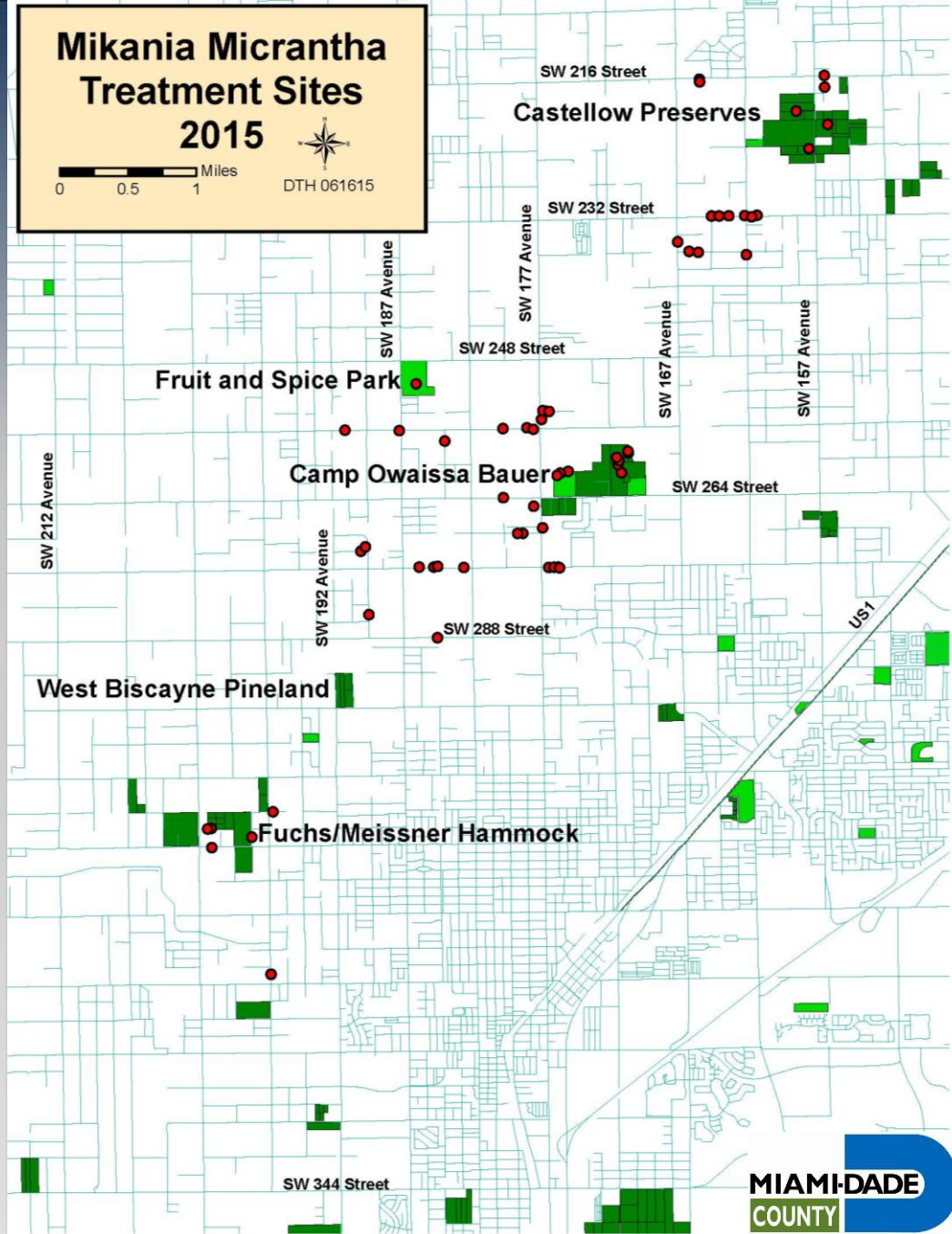
EVERGLADES CISMA

Mikania Micrantha Treatment Sites 2015

0 0.5 1 Miles



DTH 061615



Lumnitzera racemosa



EVERGLADES CISMA

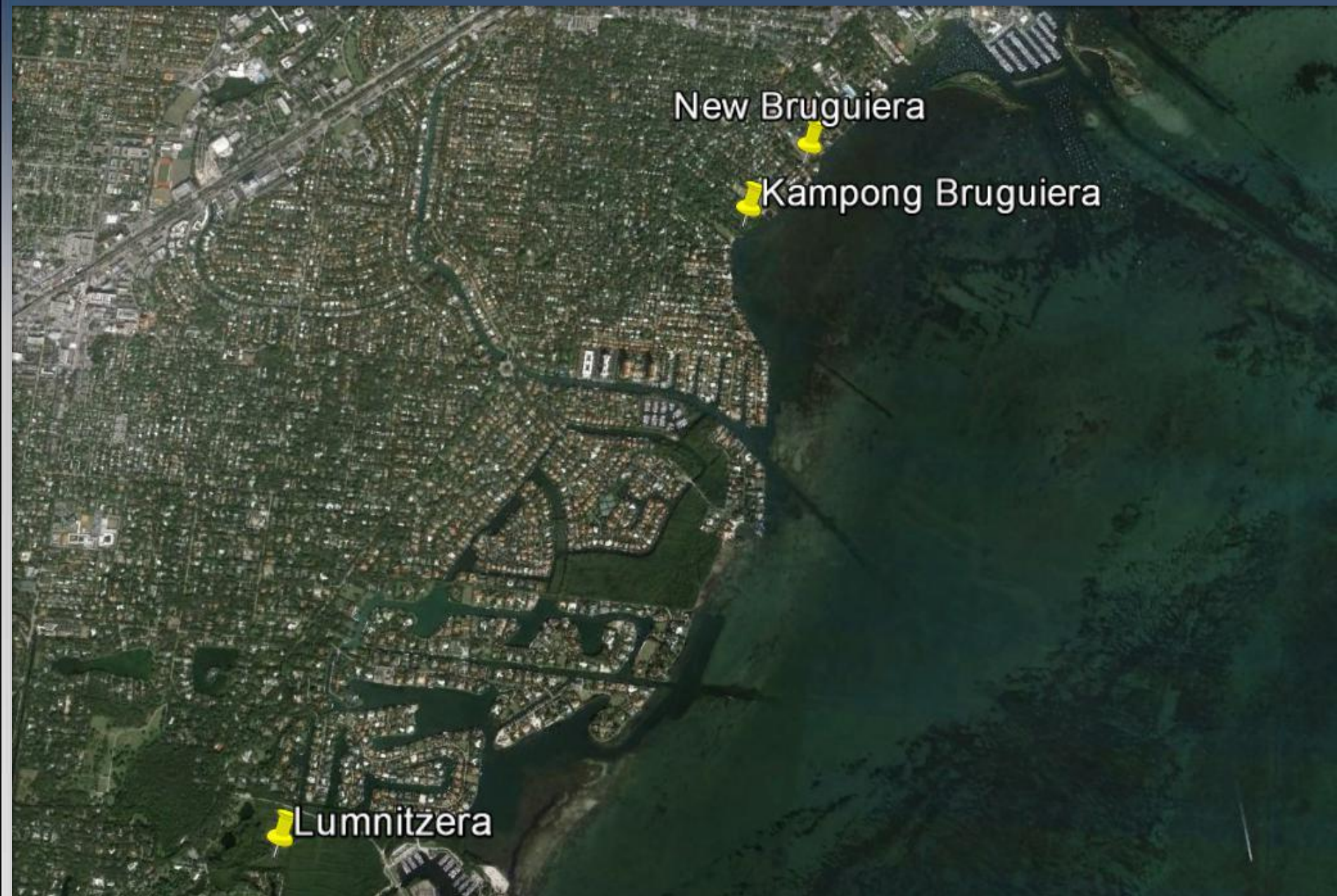
Bruguiera gymnorhiza



EVERGLADES CISMA



EVERGLADES CISMA



Argentine Black and White Tegus

Multi-agency Containment and Research Strategy



EVERGLADES CISMA

Nile Monitor Lizards



EVERGLADES CISMA

Northern African Python Surveys



EVERGLADES CISMA

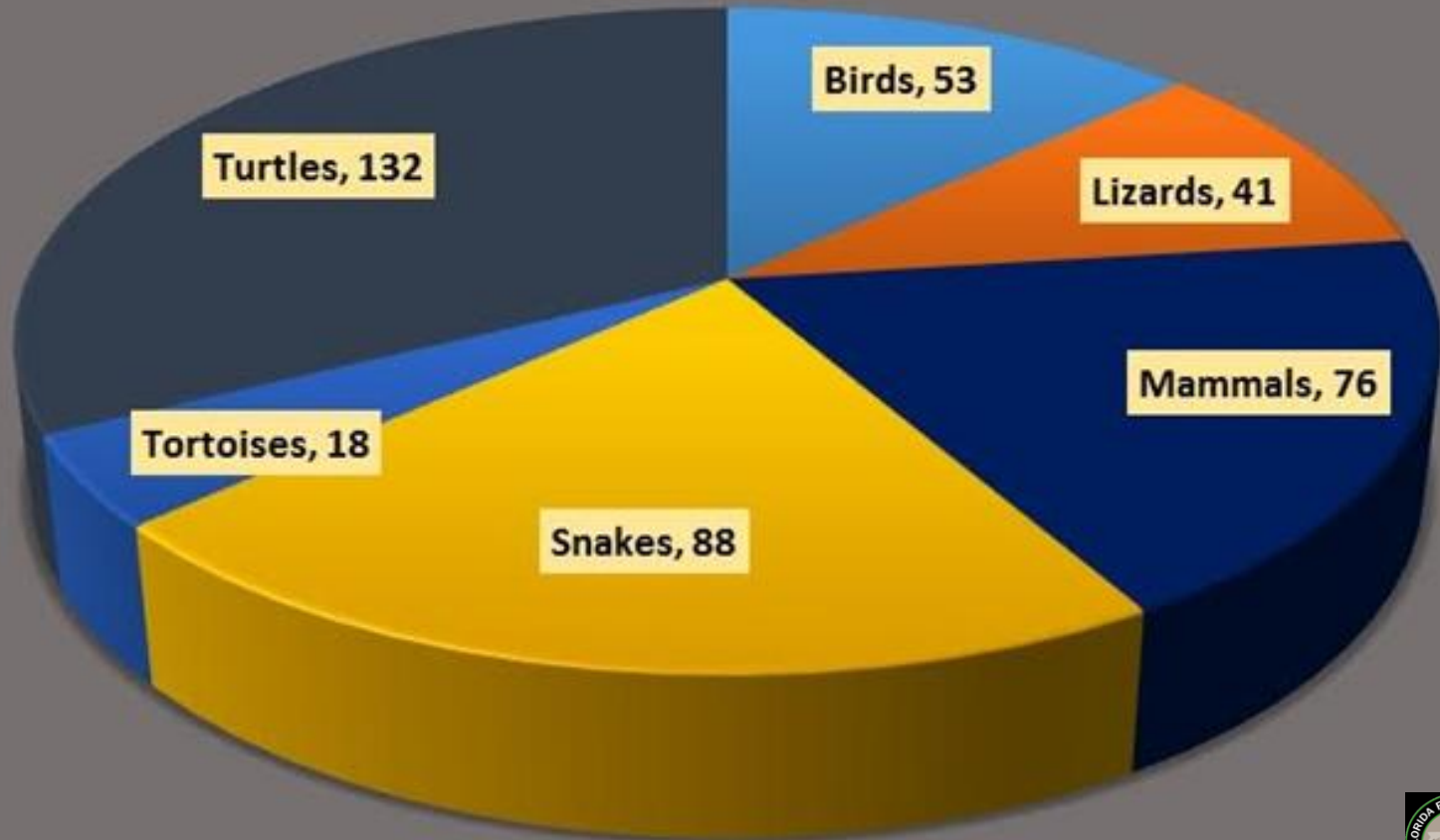
Pet Amnesty Days



EVERGLADES CISMA

1-888-IveGot1

Categories of Animals Surrendered 2014



EVERGLADES CISMA

Python Patrol



EVERGLADES CISMA

Early Detection *Platydemus manokwari*?

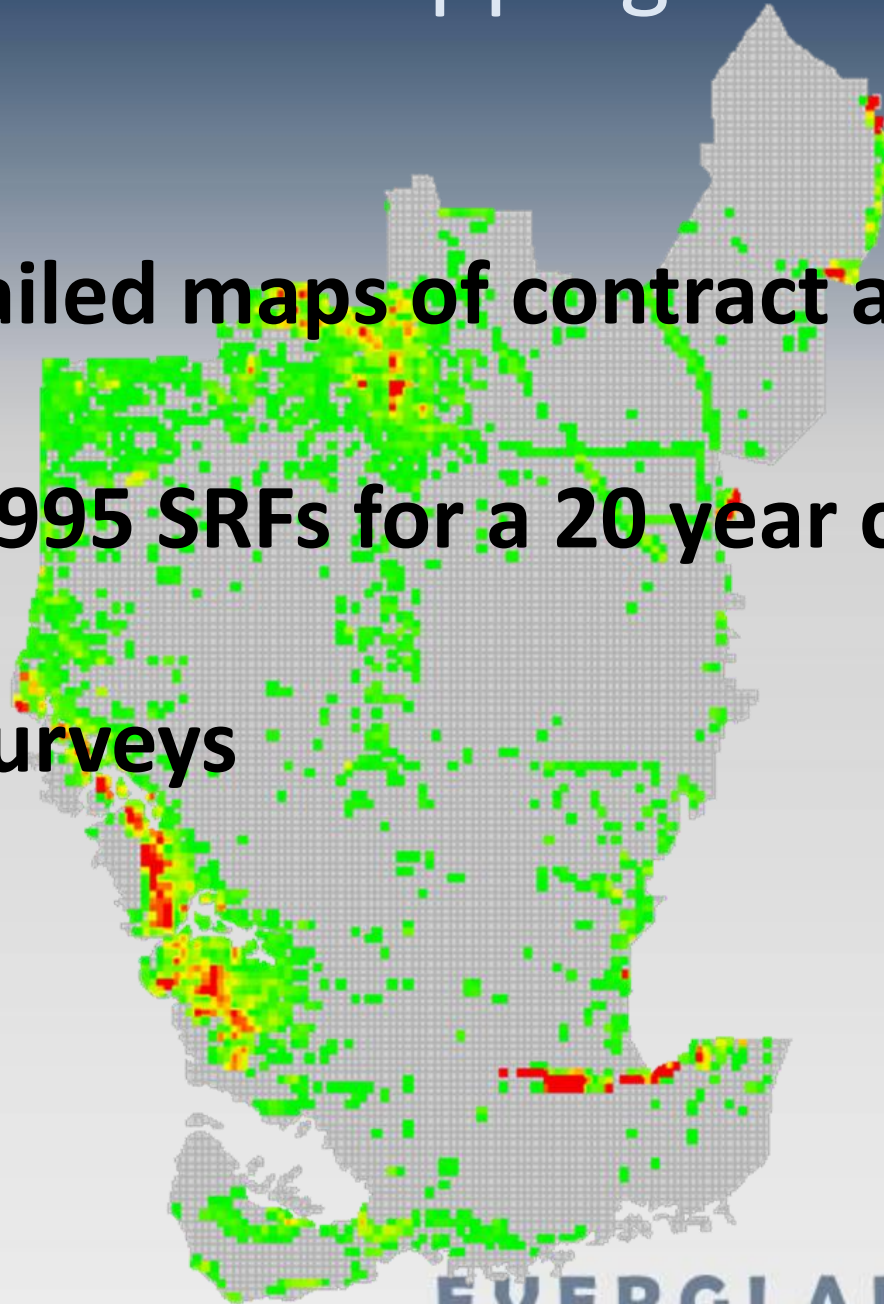


Makiri Sei

EVERGLADES CISMA

2015 Aerial Mapping Priorities

- Created detailed maps of contract areas
- Replicated 1995 SRFs for a 20 year comparison
- Laurel wilt surveys
- GRTS



Brazilian Pepper

EVERGLADES CISMA

1st Annual ECISMA 5K Fun Run/Walk

February 28, 2015 Shark Valley Everglades National Park



Race Against **2015**
Invasives **5K**

EVERGLADES CISMA



EVERGLADES CISMA



1st-Annual
Nonnative Fish



Catch-Click-Submit
CONTEST

February 21-March 1, 2015
EDDMapS.org ■ IveGot1.org

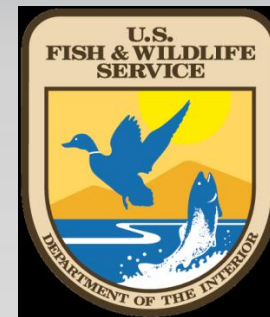


For contest rules go to:
floridainvasives.org/CatchClickSubmit/

So grab your fishing gear, a camera,
and enter the contest. You'll be
having fun and helping out our
natural resources at the same time!



Fish art by Diana Rome Peebles



Invasive Species Awareness Week

EVERGLADES CISMA

Dillon Gardner
Most Unusual Species
Where

1st Place Adult
Red Tailed Catfish
Miami-Dade



EVERGLADES CISMA

Thomas Lee

1st Place Adult
Most Species



EVERGLADES CISMA

2015 Non-Native Fish Round-up



EVERGLADES CISMA

2015 Non-Native Fish Round-up Sponsors



EVERGLADES CISMA



EVERGLADES CISMA



EVERGLADES CISMA

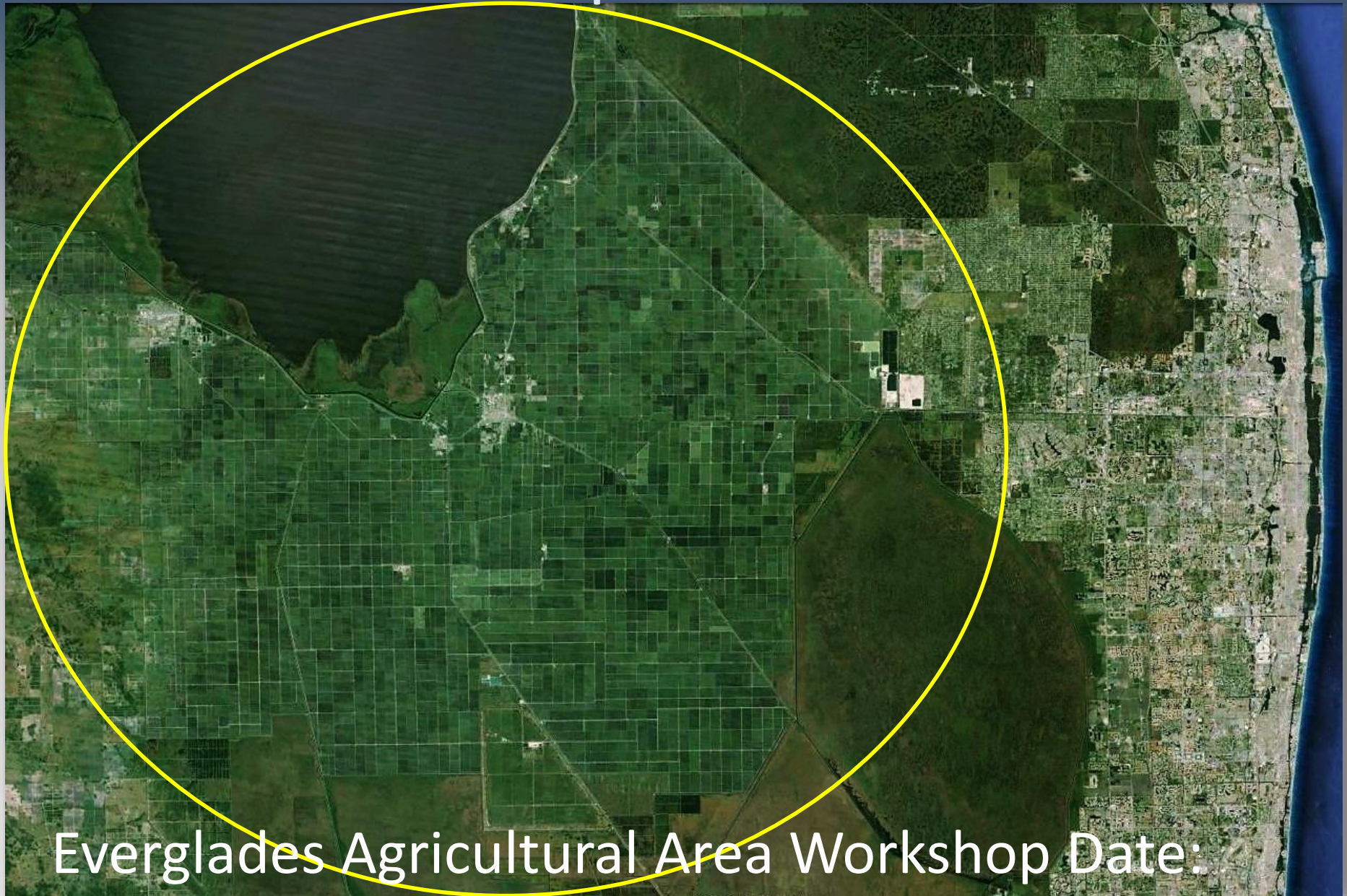


EVERGLADES CISMA



EVERGLADES CISMA

Forest Stewardship Council Collaboration



Everglades Agricultural Area Workshop Date: 4/11/2011

EVERGLADES CISMA

2015 Newsletter

So close...

EVERGLADES CISMA



Partner of the Year Award

EVERGLADES CISMA

Jennifer Ketterlin Eckles

Florida Fish and Wildlife Conservation Commission



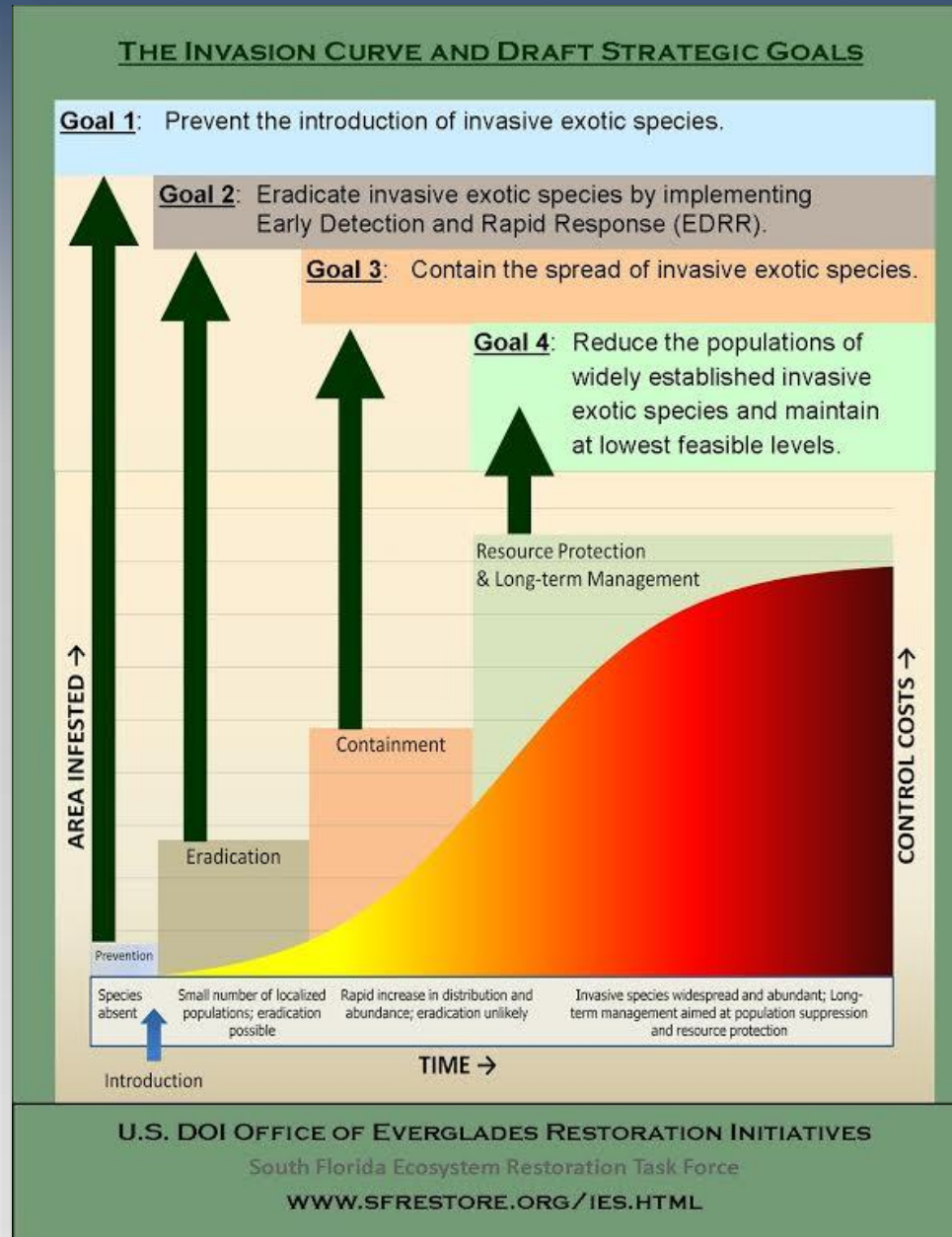
EVERGLADES CISMA

Friends of Everglades CISMA Inc

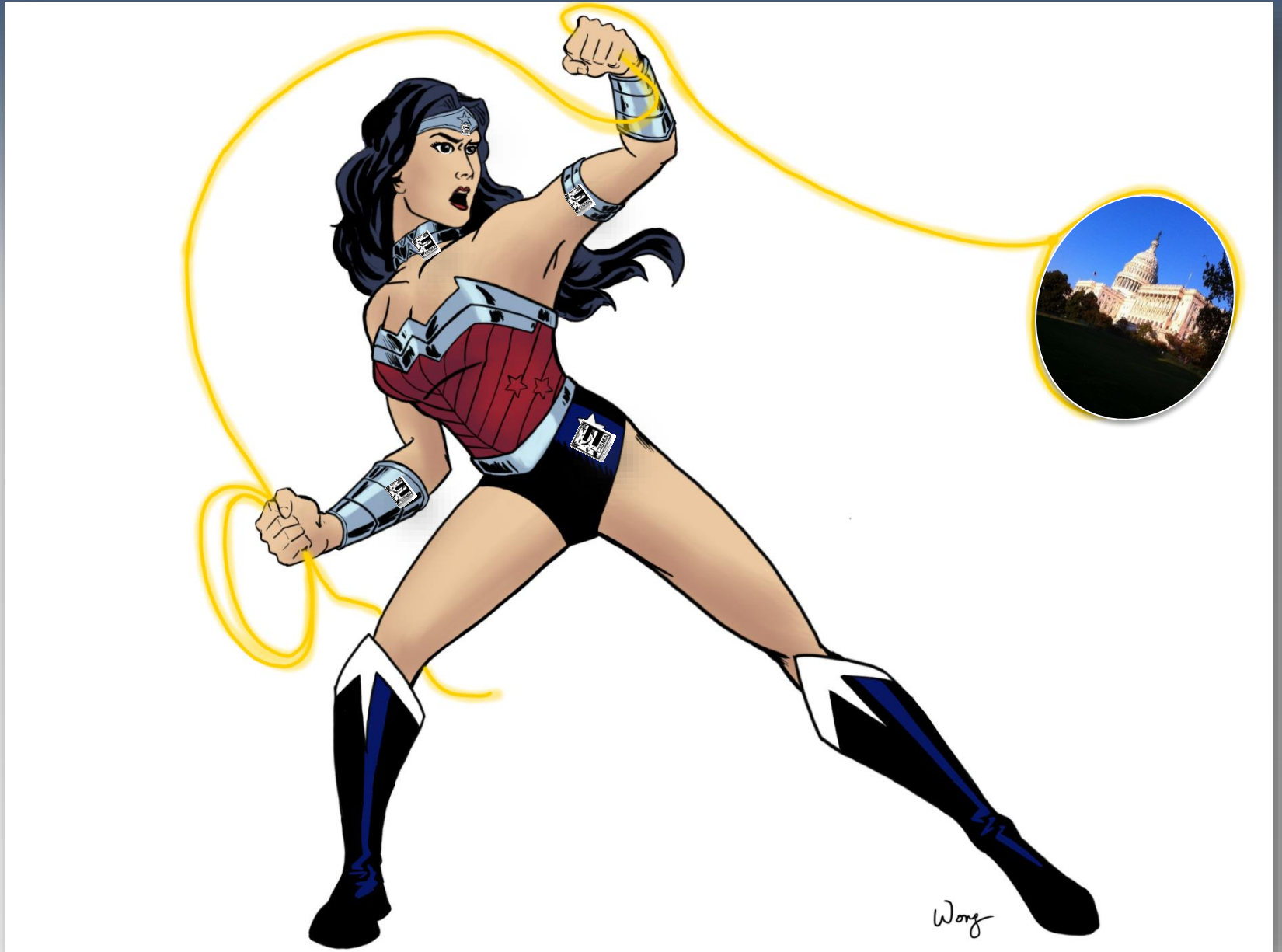


EVERGLADES CISMA

DOI Everglades Invasive Exotic Species Strategic Action Framework



Shannon Estenoz



EVERGLADES CISMA



EVERGLADES CISMA