

Invasive Animal Updates

Regional Assessment of Priority Species and Control Efforts

Jenny Ketterlin Eckles

Nonnative Fish and Wildlife Program

Florida Fish and Wildlife Conservation Commission





Trending: Burmese pythons

- Hatchlings hatching early
- Hatchlings on Loop Rd.
- Large animals from Big Cypress
- Continued reports from Alligator Alley



Northern African pythons

- FWC increased resources dramatically
- Hired permittee to lead surveys
- Contracted UF to survey and install refuges
- Created Interagency plan with UF, SFWMD, NPS, USGS, MDC PROS, and Miccosukee Tribe
- USGS tested for eDNA
- More than 50 individuals participated in 48 survey days totaling over 370 man-hours





Media event, January 29, 2015

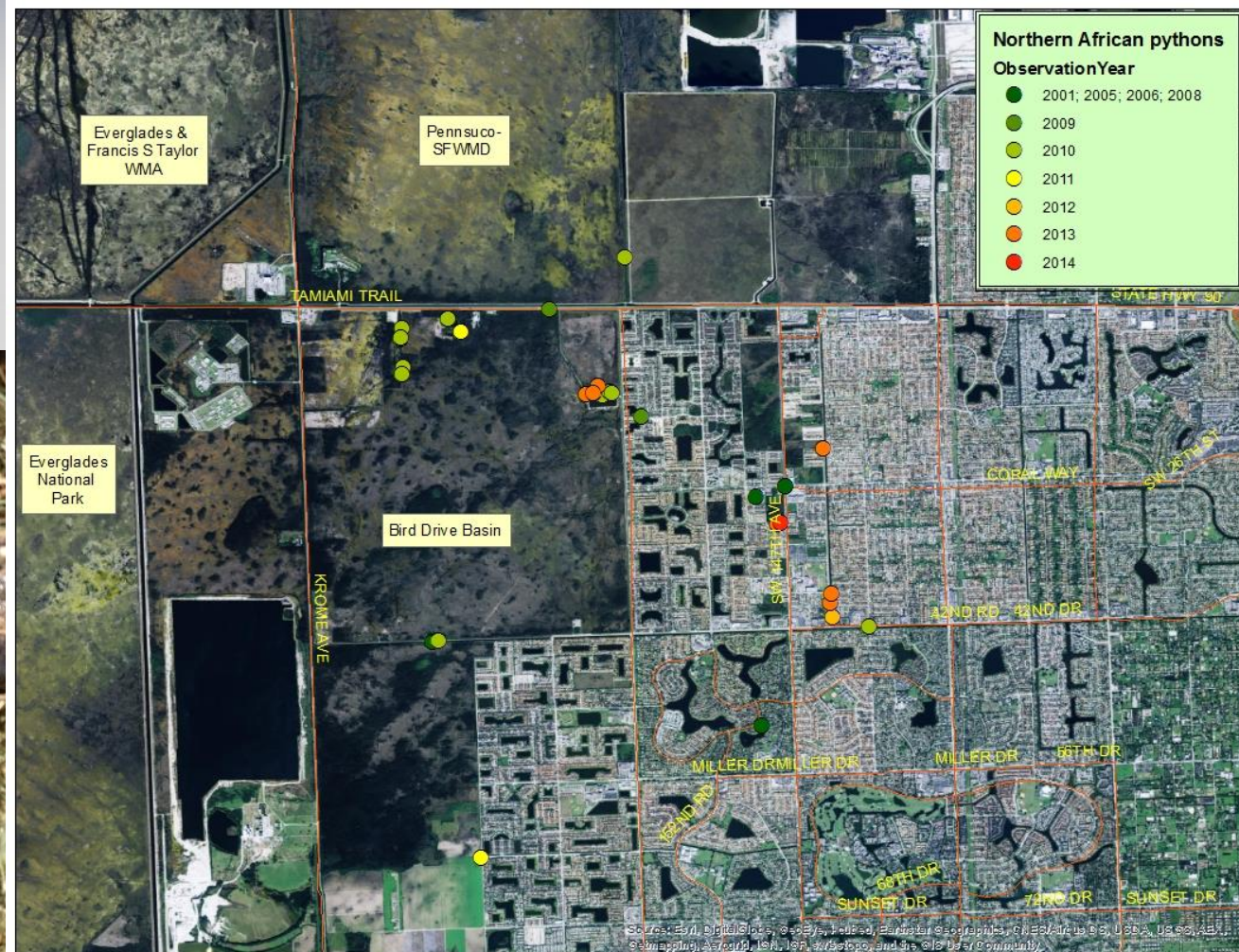


Burmese python, January 2, 2015

	2010	2011	2012	2013	2014	2015*
NAPs removed or dead	14	3	1	5	1	0

*As of July 21, 2015

Northern African python,
September 2, 2014



Source: Esri, DigitalGlobe, GeoEye, Earthstar Geographics, CNES/Airbus DS, USDA, USGS, AeroGRID, IGN, IGN, etc., GeoEye, and the GIS User Community

Gambian pouched rats

- Conserve Wildlife Tag grant used to hire technician
- Deployed camera traps
- Ran live traps over 9 trips
- 1015 trap nights
- 0 detected on cameras or in traps
- Last confirmed sightings from 2013
- No access to a few key properties in 2015

	2010	2011	2012	2013	2014	2015
GPRs removed	0	19	9	2*	0	0

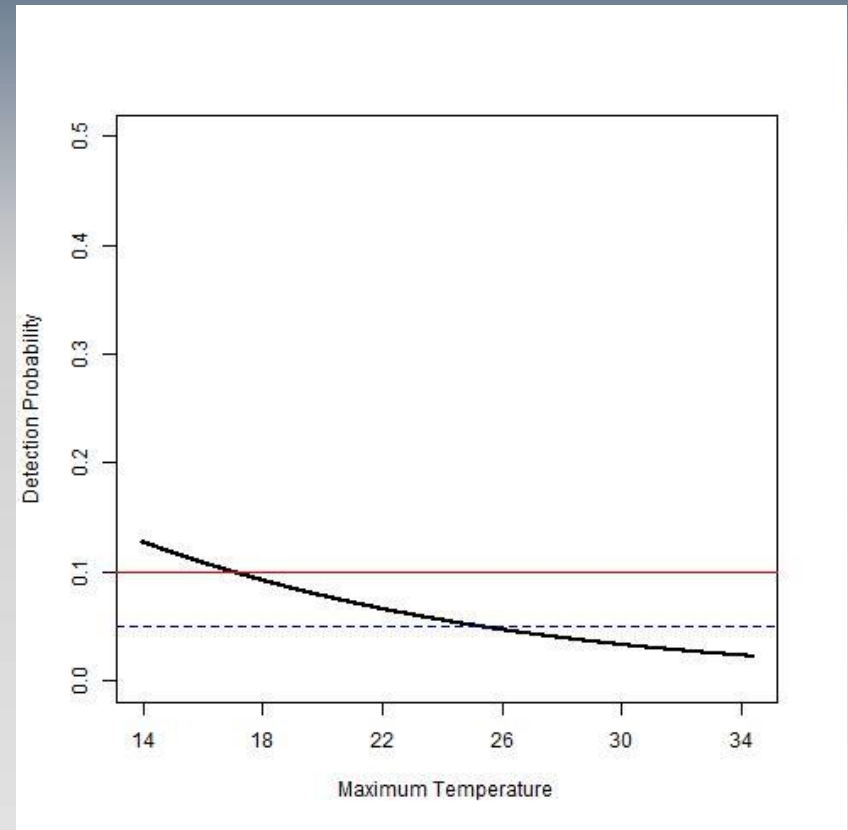
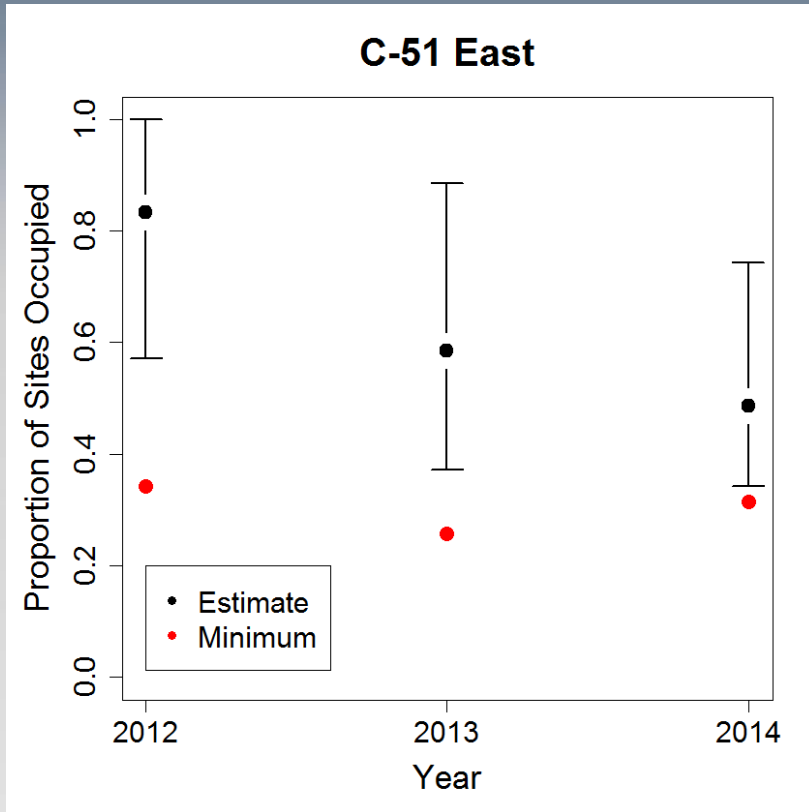
*Found dead

Nile monitors: Management and assessment actions



- Palm Beach County population
- July 2014: FWC staff increased surveys from 2 times per month to 4—6 times per month
- UF conducted necropsies to determine diet and reproductive potential
- USGS analyzed site occupancy and detection probability
- Effects of vegetation on occupancy and temperature on detection

Results of analyses, abbreviated



- Detection low = 0.048% (still higher than pythons!)
- Occupancy possibly decreasing on east side
- Vegetation had no effect on occupancy
- Higher temperatures had a negative effect on detection

JW Corbett Wildlife Management Area

Year (# surveys)	2011 (6)	2012 (12)	2013 (16)	2014 (43)	2015 (36)*	Total
Observed	12	14	10	31	11	78
Removed	2	9	7	19	7	44

*As of July 21, 2015

C-51 Nile monitor surveys

BANK

- C-51 East
- C-51 West

Point Locations by Year

ObservationYear

- 2007
- 2008
- 2009
- 2010
- 2011
- 2012
- 2013
- 2014
- 2015

Loxahatchee National Wildlife Refuge

SW Ranches monitor Broward County

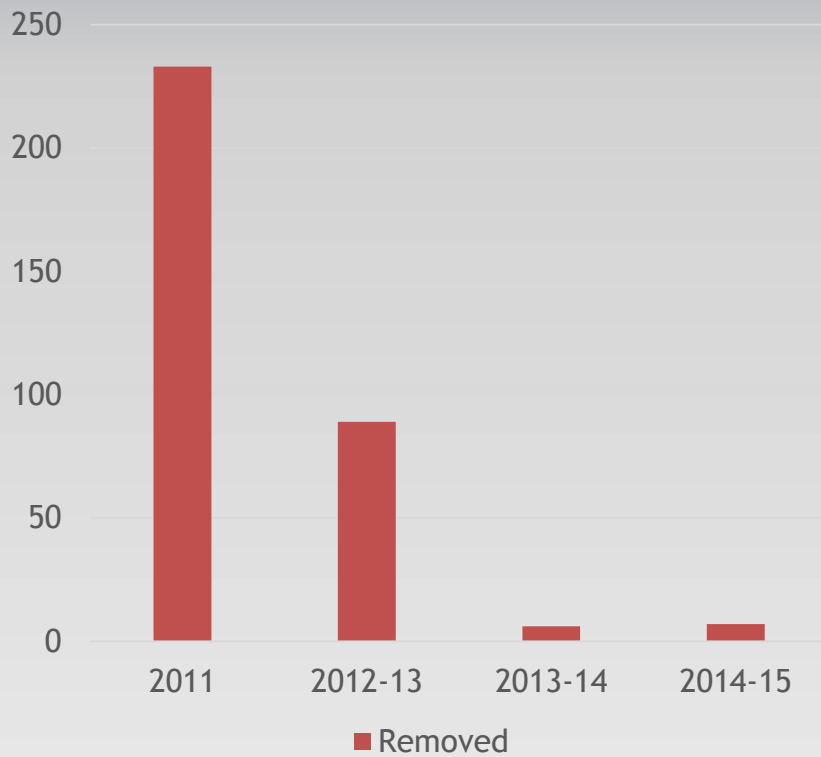
- Multiple reports since 2012
- Same individual?
- UF conducted community outreach
- Reports resulted
- May 6, 2015: Jake got his white whale!
- Next day, another sighting



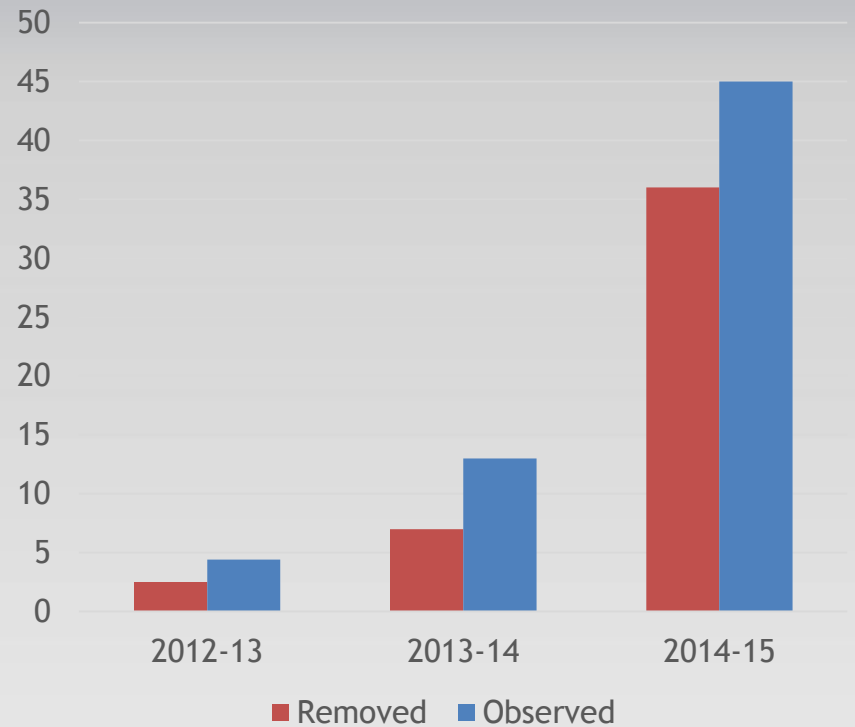
Chams and Caimans

UF Removal Efforts

Oustalet's chameleons



Spectacled caiman



Tegus

- Two dead black & white tegus in western Pembroke Pines (Broward) this spring
- One found in same area last year
- July 14, 2015: Gold tegu in Lake Worth (Palm Beach County)
- Reporter says he has seen several



Thank you!

- Nonnative Fish Lab
- University of Florida
- Everglades National Park
- US Geological Survey
- South Florida Water Management District
- Miami-Dade County PROS and Venom One Unit
- ECISMA volunteers

