

# Miccosukee Tribe of Indians of Florida



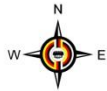
Gintas Zavadzkas  
Fish and Wildlife Dept.



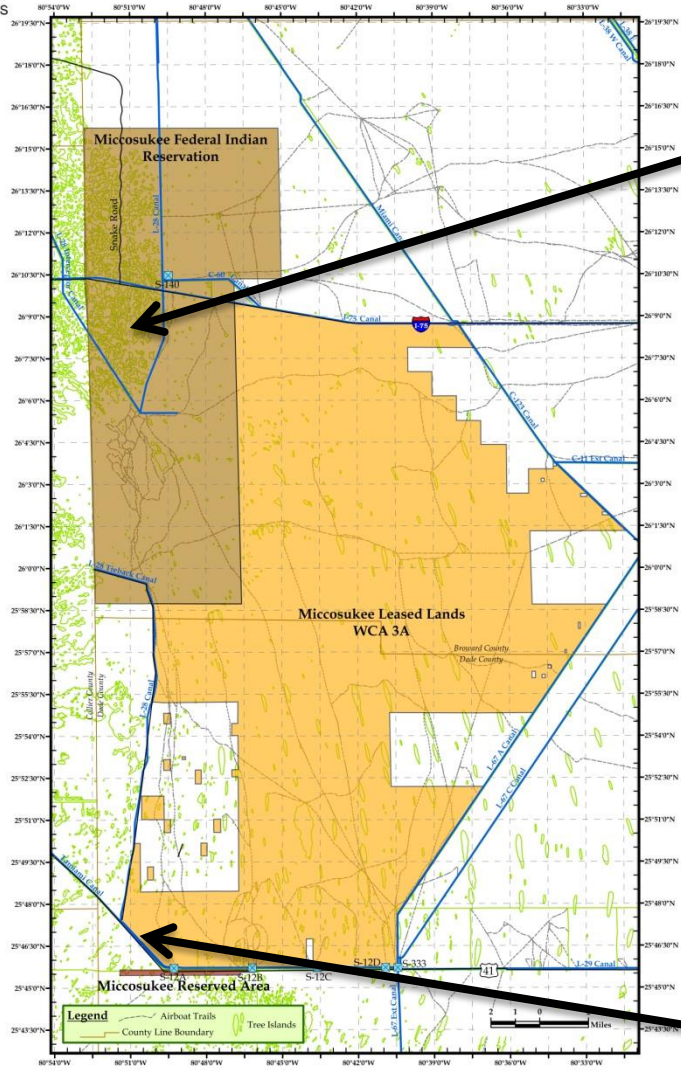
**EVERGLADES CISMA**

# Pythons are still a persistent problem...





# Micosukee Tribe of Indians Tree Islands and Hammocks



EVERGLADES CISMA



Seventeen foot Burmese Python with white tail deer remains in stomach.



# Current Python Research

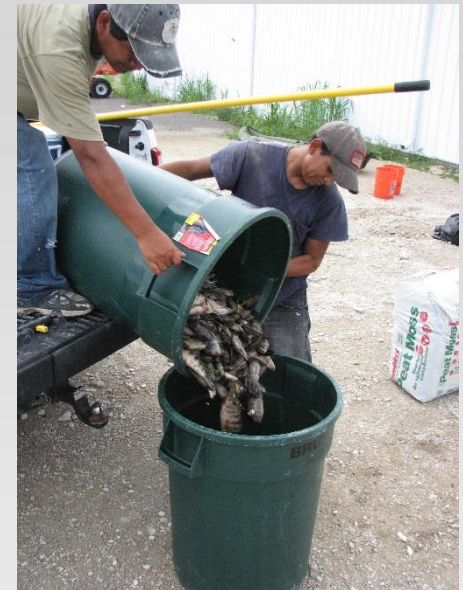
- Day and night surveys
- GPS and radio tracking
- E-DNA
- Genetic sexual construct
- Pheromone study
  - Chemo-Attractant ID
  - Dosage
  - Delivery Method
  - Cage development and field testing



# Answers from the Python research

- Location, influence and preferred habitat for pythons in the triangle area.
- Activity behavior during diurnal and nocturnal phases.
- How far can we pick up hits on the L-28 interceptor with e-DNA
- What pheromones are the most attractive and powerful as precursors for pythons.
- Creation of a passive trap for pythons based on chemo attraction.
- Location of the sex determination areas in the python DNA as the first step for future genetic study's.

# Exotic fish use the canals to travel and as refuge



**EVERGLADES CISMA**

# Exotic Fish Study

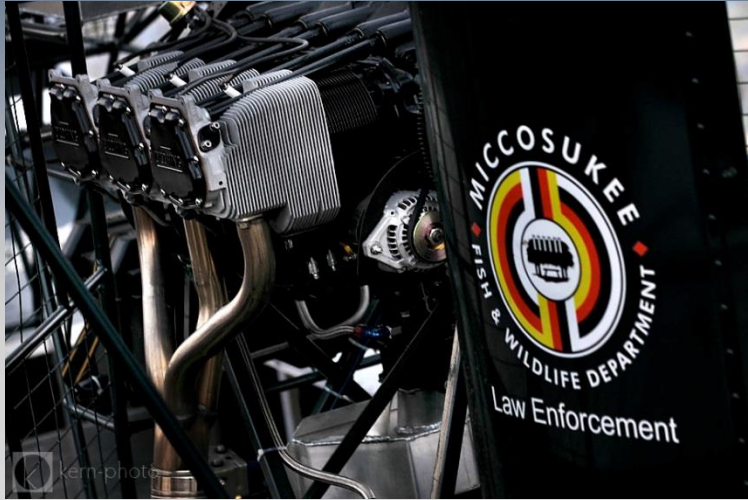
- List of organisms that could be ingested
- Genetic blast of sequences
- Sequence of missing organisms
- Gastro lavage study (8 Species of fish sampled for a year)
  - Accuracy determination trial
  - Full analysis of 50 fish of each species selected
- Acoustic study (8 species of fish sampled for a year)
  - Equipment coverage testing in local conditions
  - Pilot set up for acoustic array
  - Electroshocking of fish and transmitter insertion



# Answers from the fish research

- Location, influence and preferred habitat for selected fish species in the L-28 interceptor (Miccosukee area).
- Activity behavior and tridimensional utilization of the L-28 interceptor canal (Miccosukee Area) for the species selected.
- Spatial interaction between the exotic and native species selected.
- Diet composition in the L-28 interceptor canal (Miccosukee area).
- Possible inferences of reproduction behavior based on food intake/availability.
- Creation of a tool that can be used by any agency and expanded by synergistic collaboration.
- The information provided by the research will create a tool to be more effective at targeting a species with current control methods and future ones.

# Questions?



EVERGLADES CISMA