



[ABOUT CISMA](#)

[DISTRIBUTION MAPS](#)

[REPORT SIGHTINGS](#)

[SPECIES INFORMATION](#)

[NEWS](#)

[PARTNERS](#)

[TOOLS](#)

Report a Sighting of an Invasive ...

- [Plant](#)
- [Reptile/Amphibian](#)
- [Fish](#)
- [Bird](#)
- [Mammal](#)
- [Invertebrate](#)

Learn more about Invasive ...

- [Plants](#)
- [Reptiles/Amphibians](#)
- [Fish](#)
- [Birds](#)
- [Mammals](#)

Everglades Cooperative Invasive Species Management Area

Everglades restoration poses new challenges for invasive species management and has created a need for a more defined commitment to cooperation among agencies and organizations at higher levels of policy and management.

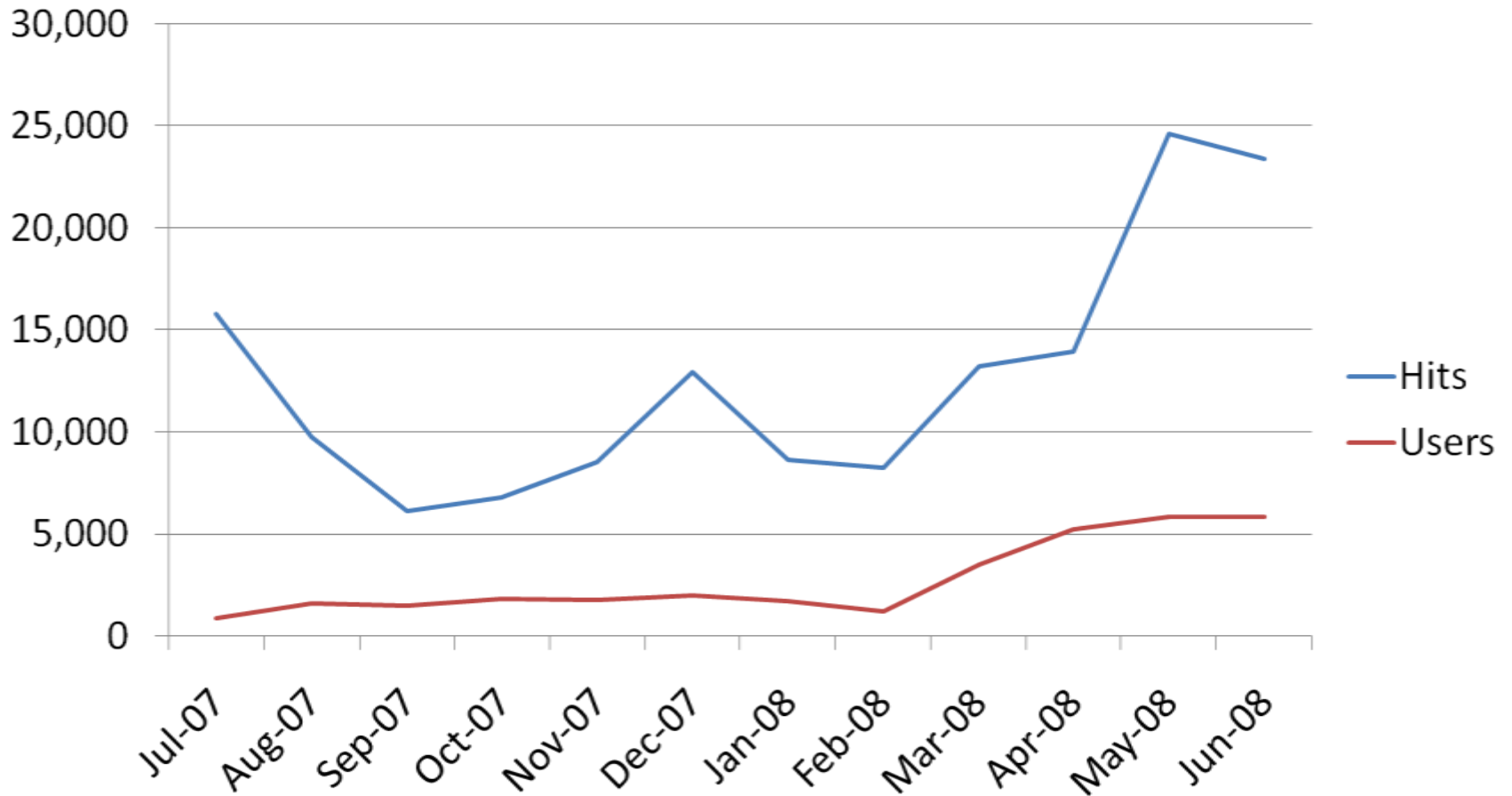
Everglades restoration will be enhanced by the establishment of a formal framework for staff and management cooperation among agencies and other coordinating bodies such as the South Florida Ecosystem Restoration Task Force, Working Group and Science Coordination Group.

What's New

- [2008 Everglades Invasive Species Summit - Preliminary Agenda](#)
- [Digital Aerial Sketchmapping](#)
- [Recent Invasive Species Reports](#)
- [Partner Tools - Blog, List Serv, File Sharing and Image Upload](#)

Web Traffic

July 2007 – June 2008



152,307 Hits from 33,336 Users



10 Reports





192 Records

Florida FWCC Data

Larry Conner



368 species
185 with pictures
5088 images



About the Everglades CISMA

What is a CISMA?

A Cooperative Invasive Species Management Area is a formal partnership of federal, state, and local government agencies, tribes, individuals and various interested groups that manage invasive species and is defined by a geographic boundary.

Why a CISMA in the Everglades?

Florida has a long history of invasive species organization cooperation such as the Florida Exotic Pest Plant Council, Noxious Exotic Weed Task Team, Florida Invasive Animal Task Team and Invasive Species Working Group.

Everglades restoration poses new challenges for invasive species management and has created a need for a more defined commitment to cooperation among agencies and organizations at higher levels of policy and management.

What will the Everglades CISMA provide?

Everglades restoration will be enhanced by the establishment of a formal framework for staff and management cooperation among agencies and other coordinating bodies such as the South Florida Ecosystem Restoration Task Force, Working Group and Science Coordination Group.

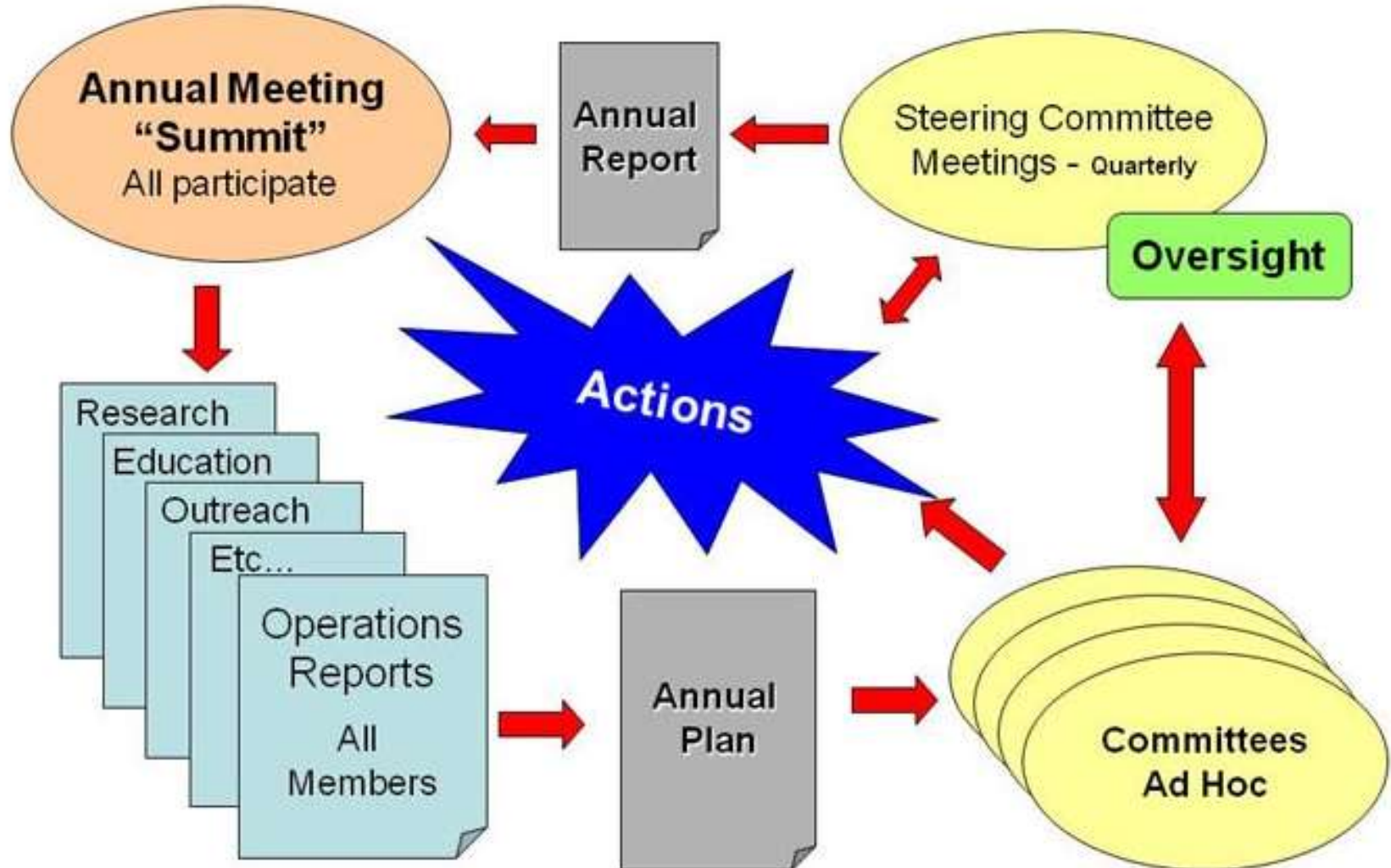
An Everglades CISMA is needed to:

- Formalize areas of coordination and cooperation among agencies.
- Define specific geographical areas and prioritize species for Everglades restoration.
- Integrate coordination, control and management of invasive species at regional, multi-jurisdictional levels.
- Directly involve high-level policy makers and managers in Everglades invasive species coordination and areas of cooperation through a formal agreement.
- Be eligible for additional funding opportunities that are only available to CISMA-type organizations.
- Provide multi-organizational agreement and support toward the development of an Invasive Species Master Plan as part

Documents

- Annual Work Plan FY2008
- Operational Presentation Template

Business Process



Everglades Invasive Species Distribution Maps

[Plants - 120 species](#)

[Other Species - 16 species](#)

[Recent Reports](#)

Plants - 120 species

Subject Name	Scientific Name ↓
rosarypea	<i>Abrus precatorius</i> L.
earleaf acacia	<i>Acacia auriculiformis</i> A. Cunningham ex Benth.
sisal	<i>Agave sisalana</i> Perrine
mimosa	<i>Albizia julibrissin</i> Durazz.
woman's tongue	<i>Albizia lebeck</i> (L.) Benth
white cheesewood	<i>Alstonia scholaris</i> (L.)R.Br.
alligatorweed	<i>Alternanthera philoxeroides</i> (Mart.) Griseb.
coral vine	<i>Antigonon leptopus</i> Hook. & Arn
coral ardisia	<i>Ardisia crenata</i> Sims
shoebutton ardisia	<i>Ardisia elliptica</i> Thunb

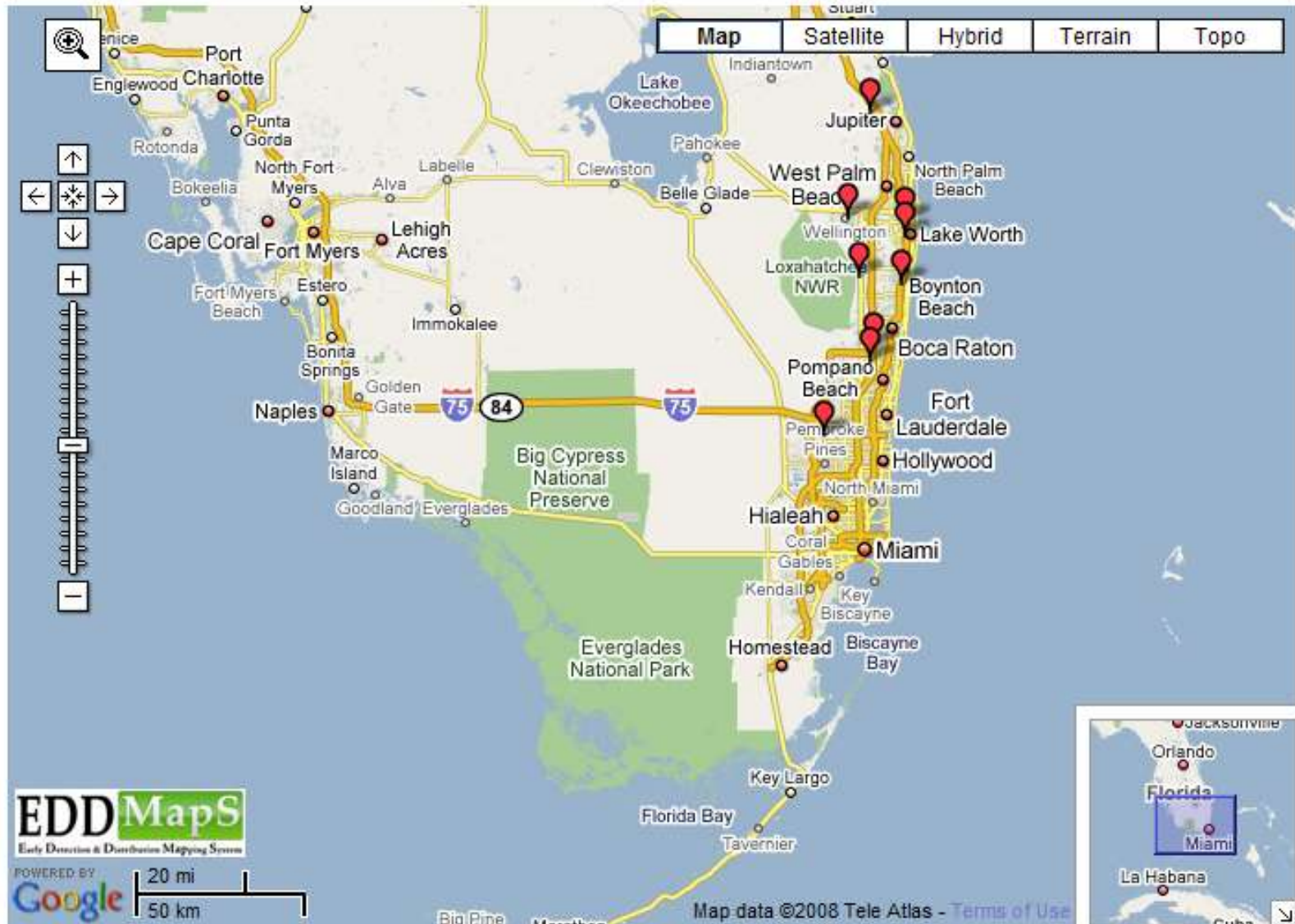
alligatorweed - *Alternanthera philoxeroides* (Mart.) Griseb.

Center Latitude:

Center Longitude:

Mouse Latitude:

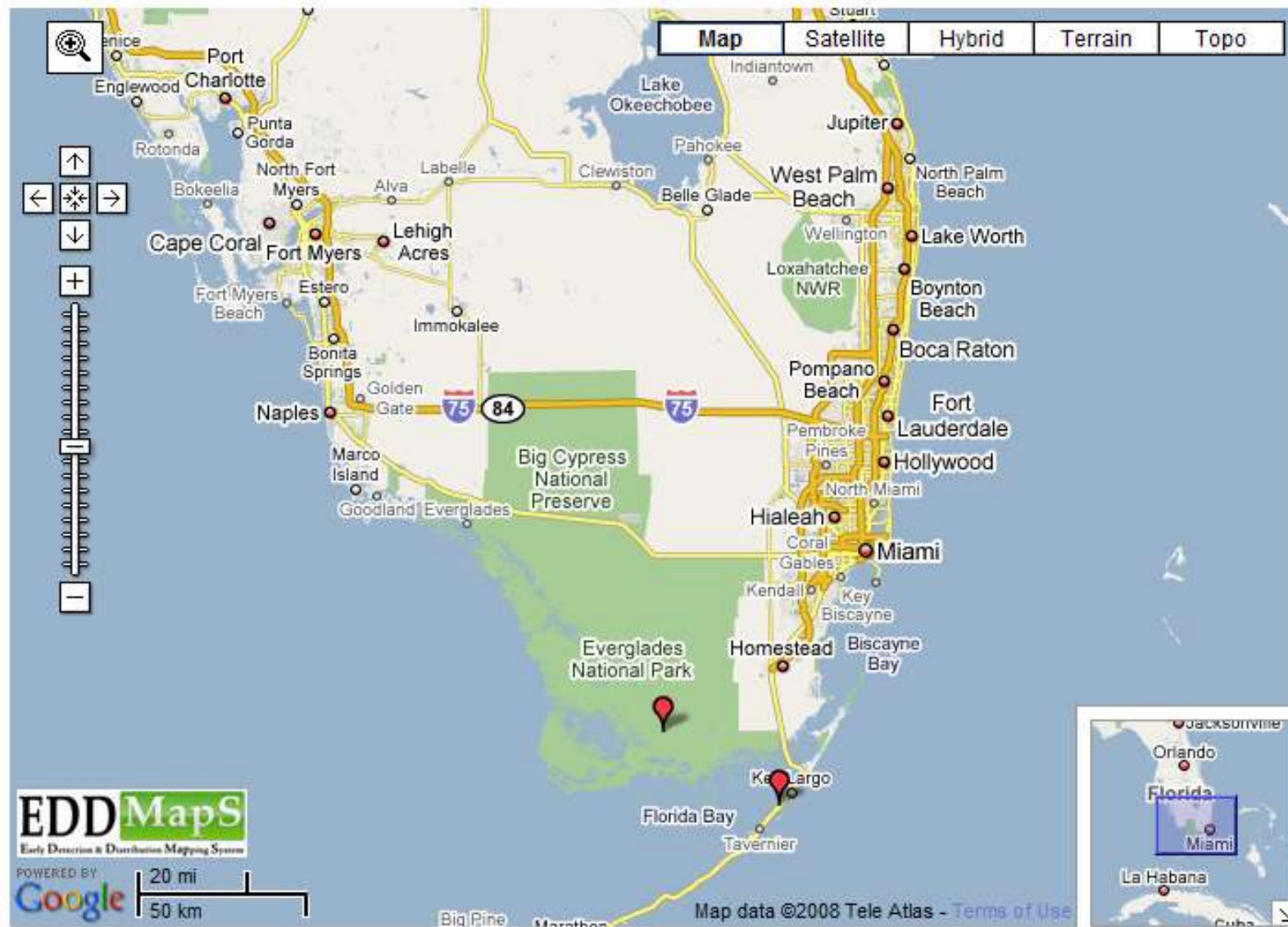
Mouse Longitude:



search the map

Burmese python - *Python molurus* ssp. *bivittatus* Kuhl, 1820

Center Latitude: Center Longitude:
Mouse Latitude: Mouse Longitude:



Burmese python - *Python molurus ssp. bivittatus* Kuhl, 1820

Center Latitude: Center Longitude:
Mouse Latitude: Mouse Longitude:



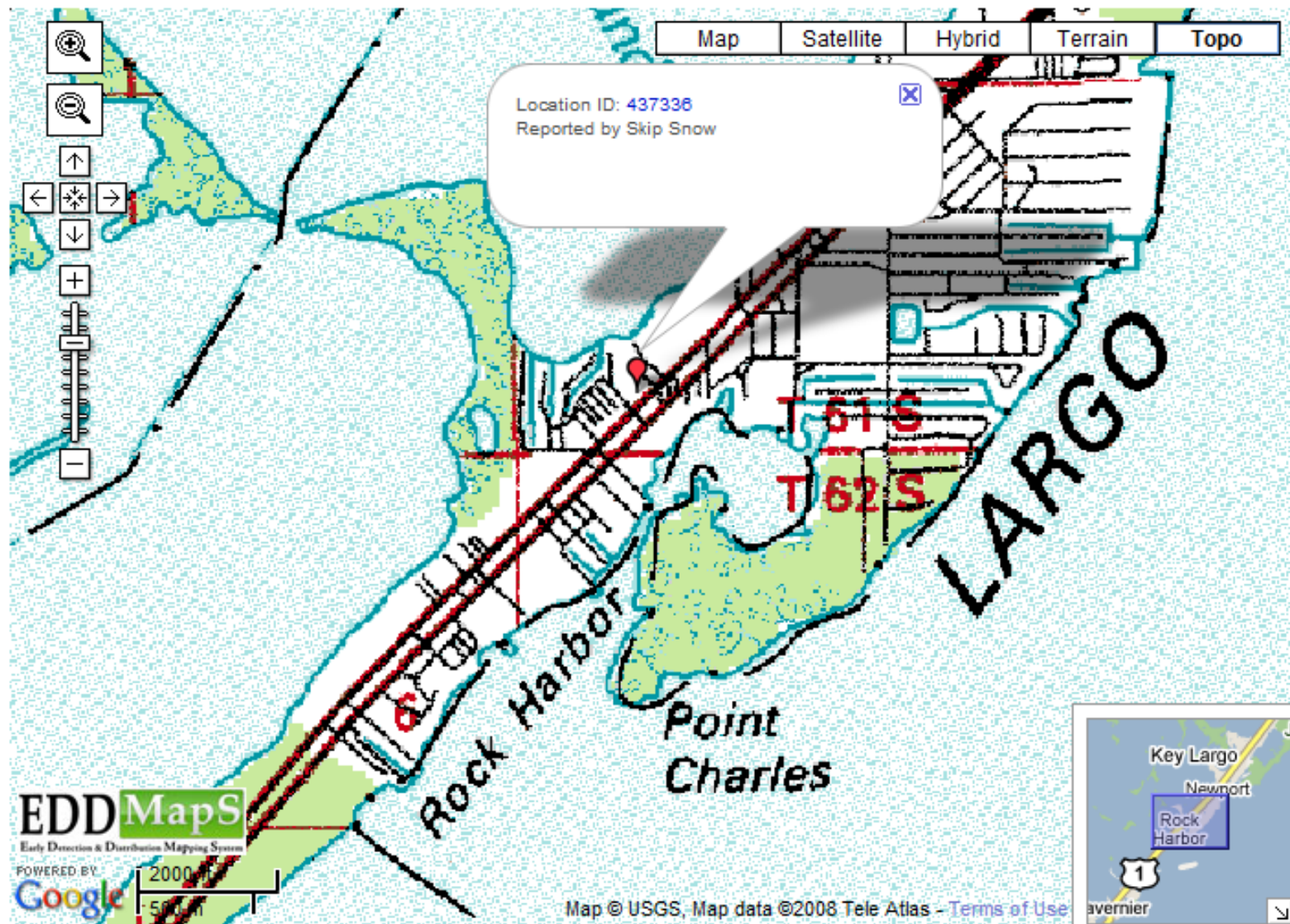
Burmese python - *Python molurus ssp. bivittatus* Kuhl, 1820

Center Latitude:

Center Longitude:

Mouse Latitude:

Mouse Longitude:



Burmese python

[Save as Adobe PDF](#)

Python molurus ssp. bivittatus Kuhl, 1820

Location:	Monroe County, Florida
Source:	Skip Snow, Everglades National Park
Habitat:	Forests: Hardwood
Locality:	Sue Nulman, 98610 Overseas Highway (Bayside) Key Largo, Fla
Comments:	<p>At about 1:10 pm on Tuesday, 24 June 2008, the Python Hotline received a call from Sue Nulman, 98610 Overseas Highway (Bayside) Key Largo. Ms. Nulman had found a python on her property in a shaded area attempting to eat one of her "pet" birds, one of many wild doves (and other wildlife) she feeds. The Nulman property appears to be rather large and wooded. At around 12:30 pm she saw the python, mostly concealed by leaves, with a dove, dead but not swallowed. Nulman stunned the snake with a blow to the head and then severed the spinal cord. I was in the area so stopped to pick up the carcass, and chat. She expressed concern about the remaining wildlife and the dog, and how to secure the house against pythons. Nulman got the Python Hotline number from a flyer she picked up in Big Cypress. I took the carcass back to the lab and performed a necropsy late in the afternoon. Results are as follows: PyMo_901, a male, some rigor in the carcass, 207.5 cm (TL), 181.0 cm (SVL), with a mass of 3.972 kg and a girth of 18.5 cm. Looks to be near mature, perhaps breeding for the first time this coming winter. No external parasites observed. A couple of large round worms were found in the lower gut, which seem to be associated with a large quantity of fecal material (hair observed). Gut contents were collected and frozen. Mike Rochford and I identified two black rats (<i>Rattus rattus</i>) in the remains collected from the lower gut. The stomach was empty, and a very small amount of unidentified material was collected from the esophagus (also frozen). The carcass was retained (frozen) as a specimen for the FLMNH. Photos were taken by me and by Ms. Nulman (she will email her photos). In general, another rather</p>



Everglades *CISMA*
Cooperative Invasive Species Management Area

Burmese python

Python molurus ssp. bivittatus Kuhl, 1820

Location: Monroe County, Florida
Source: Skip Snow, Everglades National Park
Habitat: Forests: Hardwood
Locality: Sue Nulman, 98610 Overseas Highway (Bayside) Key Largo, Fla

Comments: At about 1:10 pm on Tuesday, 24 June 2008, the Python Hotline received a call from Sue Nulman, 98610 Overseas Highway (Bayside) Key Largo. Ms. Nulman had found a python on her property in a shaded area attempting to eat one of her "per" birds, one of many wild doves (and other wildlife) she feeds. The Nulman property appears to be rather large and wooded. At around 12:30 pm she saw the python, mostly concealed by leaves, with a dove, dead but not swallowed. Nulman stunned the snake with a blow to the head and then severed the spinal cord. I was in the area so stopped to pick up the carcass, and chat. She expressed concern about the remaining wildlife and the dog, and how to secure the house against pythons. Nulman got the Python Hotline number from a flyer she picked up in Big Cypress. I took the carcass back to the lab and performed a necropsy late in the afternoon. Results are as follows: PyMo_901, a male, some rigor in the carcass, 207.5 cm (TL), 181.0 cm (SVL), with a mass of 3.972 kg and a girth of 18.5 cm. Looks to be near mature, perhaps breeding for the first time this coming winter. No external parasites observed. A couple of large round worms were found in the lower gut, which seem to be associated with a large quantity of fecal material (hair observed). Gut contents were collected and frozen. Mike Rochford and I identified two black rats (*Rattus rattus*) in the remains collected from the lower gut. The stomach was empty, and a very small amount of unidentified material was collected from the esophagus (also frozen). The carcass was retained (frozen) as a specimen for the FLMNH. Photos were taken by me and by Ms. Nulman (she will email her photos). In general, another rather unremarkable young male Burmese python shows up in Paradise.

Coordinates: [25.0840830602, -80.4526555538](#)
NADatum: NAD83
Ownership: Private Landowner
Observation Date: June 24, 2008
Date Entered: June 30, 2008



Recent Reports

Subscribe to RSS Feed

ID	Subject	User	Location	Date
437337	giant whiptail	LeRoy Rodgers	Dade County, Florida	01-Jul-08
437336	Burmese python	Skip Snow	Monroe County, Florida	30-Jun-08
435084	South American coati	Vanessa McDonough	Dade County, Florida	19-Jun-08
394221	Gold tegu	Skip Snow	Dade County, Florida	11-Jun-08
394219	African redhead agama	Andrea Atkinson	Dade County, Florida	04-Jun-08
385905	Mayan cichlid	Shawn Liston	Collier County, Florida	27-May-08
385906	Mayan cichlid	Shawn Liston	Collier County, Florida	27-May-08
385907	Mayan cichlid	Shawn Liston	Collier County, Florida	27-May-08
385908	Mayan cichlid	Shawn Liston	Collier County, Florida	27-May-08
385909	Mayan cichlid	Shawn Liston	Collier County, Florida	27-May-08
385837	Mayan cichlid	Shawn Liston	Collier County, Florida	27-May-08
385838	spotted tilapia	Shawn Liston	Collier County, Florida	27-May-08
385839	spotted tilapia	Shawn Liston	Collier County, Florida	27-May-08
385840	walking catfish	Shawn Liston	Collier County, Florida	27-May-08

Everglades Invasive Species Information and Images

- [Plants](#)
- [Reptiles/Amphibians](#)
- [Fish](#)
- [Birds](#)
- [Mammals](#)
- [Insects](#)
- [Other Invertebrates](#)

Everglades Invasive Reptiles

African redhead agama	<i>Agama agama</i> (Linnaeus, 1758)
South American ground lizard	<i>Ameiva ameiva</i> (Linnaeus, 1758)
Hispaniolan green anole	<i>Anolis chlorocyanus</i> Duméril and Bibron, 1837
Largehead anole	<i>Anolis cybotes</i> Cope, 1862
Cuban knight anole	<i>Anolis equestris persparsus</i> Schwartz & Garrido, 1972
Knight anole	<i>Anolis equestris equestris</i> Merrem, 1820
Barbados anole	<i>Anolis extremus</i> Garman, 1887
Cuban Green Anole	<i>Anolis porcatus</i> Gray, 1840
brown basilisk	<i>Basiliscus vittatus</i> Wiegmann, 1828
common boa	<i>Boa constrictor</i> Linnaeus, 1758
brown tree snake	<i>Boiga irregularis</i> (Merrem, 1802)
common caiman	<i>Caiman crocodilus</i> (Linnaeus, 1758)
caiman	<i>Caiman spp.</i> Spix, 1825
White-lipped Calotes	<i>Calotes mystaceus</i> Duméril and Bibron, 1837
Oriental Garden Lizard	<i>Calotes versicolor</i> Fitzinger, 1826
Veiled Chameleon	<i>Chamaeleo calypttratus</i> Duméril and Bibron, 1851
rainbow Whiptail	<i>Cnemidophorus lemniscatus</i> (Linnaeus, 1758)
giant whiptail	<i>Cnemidophorus motaguae</i> Sackett, 1941
flat-tailed house gecko	<i>Cosymbotus platyurus</i> (Schneider, 1792)
Puerto Rican crested anole	<i>Ctenonotus cristatellus cristatellus</i> Dumeril & Bibron 1837
bark anole	<i>Ctenonotus distichus</i> (Cope, 1861)
Mexican Spiny-tailed Iguana	<i>Ctenosaura pertinata</i> Wienmann, 1834

Burmese python

Scientific Name: *Python molurus ssp. bivittatus* Kuhl, 1820

Taxonomic Rank: Animalia: Chordata: Reptilia: Squamata: Pythonidae:

Identification, Biology, Control and Management Resources

Nonindigenous Aquatic Species Database - U.S. Geological Survey

<http://nas.er.usgs.gov/queries/FactSheet.asp?speciesID=2552> - Jul 15, 2007

Burmese python - Wikipedia

http://en.wikipedia.org/wiki/Burmese_Python - Apr 30, 2008

Everglades Burmese Python Project - Davidson College Herpetology Laboratory

<http://www.bio.davidson.edu/people/midorcas/research/StResearch/Python%20Project%20Website/Python.htm> - Apr 30, 2008

Python Snakes, An Invasive Species In Florida, Could Spread To One Third Of US - Science Daily

<http://www.sciencedaily.com/releases/2008/02/080223111456.htm> - Apr 30, 2008

Stopping a Burmese python invasion - Nature Conservancy

<http://www.nature.org/wherewework/northamerica/states/florida/science/art24101.html> - Apr 30, 2008

Global Invasive Species Database - Invasive Species Specialist Group

<http://www.issg.org/database/species/ecology.asp?si=1207&fr=1&sts=sss&lang=EN> - May 30, 2008

Nonnative Species Information - Florida Fish and Wildlife Conservation Commission

<http://myfwc.com/nonnatives/exotics/SpeciesNumberResults.asp?SPPNO=46> - Jul 10, 2008

Selected Images from Invasive.org

[View All Images](#)



Stopping a Burmese python invasion - Nature Conservancy

<http://www.nature.org/wherewework/northamerica/states/florida/science/art24101.html> - Apr 30, 2008

Global Invasive Species Database - Invasive Species Specialist Group

<http://www.issg.org/database/species/ecology.asp?si=1207&fr=1&sts=sss&lang=EN> - May 30, 2008

Nonnative Species Information - Florida Fish and Wildlife Conservation Commission

<http://myfwc.com/nonnatives/exotics/SpeciesNumberResults.asp?SPPNO=46> - Jul 10, 2008

Selected Images from Invasive.org

[View All Images](#)



Adult(s)

Photo by: Roy Wood, National Park Service
[Additional Information
and Resolutions](#)



Research

Photo by: Lori Oberhofer, National Park Service
[Additional Information
and Resolutions](#)



Research

Photo by: Lori Oberhofer, National Park Service
[Additional Information
and Resolutions](#)



Adult(s)

Photo by: Skip Snow, National Park Service
[Additional Information
and Resolutions](#)



Research

Photo by: Lori Oberhofer, National Park Service
[Additional Information](#)



Adult(s)

Photo by: Skip Snow, National Park Service
[Additional Information
and Resolutions](#)

NAS - Nonindigenous Aquatic Species

NAS Program Home	News	Alert System	Database & Queries	General Taxa Information	Links to Other Resources
----------------------------------	----------------------	------------------------------	--	--	--



Welcome to the **Nonindigenous Aquatic Species (NAS)** information resource for the United States Geological Survey. Located at the Center for Aquatic Resource Studies, this site has been established as a central repository for accurate and spatially referenced biogeographic accounts of nonindigenous aquatic species.

Through the links below you can obtain information, maps, or issue queries to the NAS database regarding different nonindigenous aquatic species.

Vertebrates



Amphibians



Reptiles



Fishes



Mammals

Invertebrates



Tunicates



Bryozoans



Sponges



Coelenterates



Annelids



Mollusks



Crustaceans

Plants



Center for Aquatic and Invasive Plants

Institute of Food and Agricultural Sciences



Welcome

The **UF/IFAS Center for Aquatic and Invasive Plants** is a multidisciplinary research, teaching and extension unit directed to develop environmentally sound techniques for the management of aquatic and natural area weed species and to coordinate aquatic plant research activities within the State of Florida. The Center was established in 1978 by the Florida legislature. Directed by Dr. William Haller, the Center utilizes expertise from many departments with UF/IFAS and its Agricultural Research and Education Centers throughout Florida.

The mission of the **CAIP Information Office** is to inform and educate all stakeholders about the impacts and management of invasive plants.

[Plant Information & Images](#) ▶

[APIRS Literature Collection & Database](#) ▶

[Products & Educational Tools](#)

[What's New](#)

[Meetings](#)

[Plant Management in Florida Waters](#)

[Osceola County Hydrilla & Hygrophila Demonstration Project](#)

[IFAS Assessment ...](#) ▶

[Faculty & Staff](#)

[Helpful Links](#)



[Launch Here](#)





GO

Welcome to Nonnative Species Information

FWC Home

Wildlife & Habitats
Nonnatives Home

What is a nonnative species?

How do they get here?

What is an invasive species?

What can I do to help?

Rules & Regulations

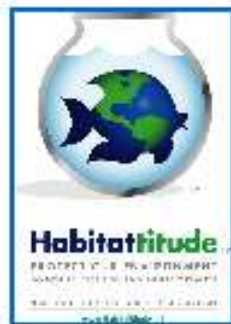
Links

Becoming an Adopter

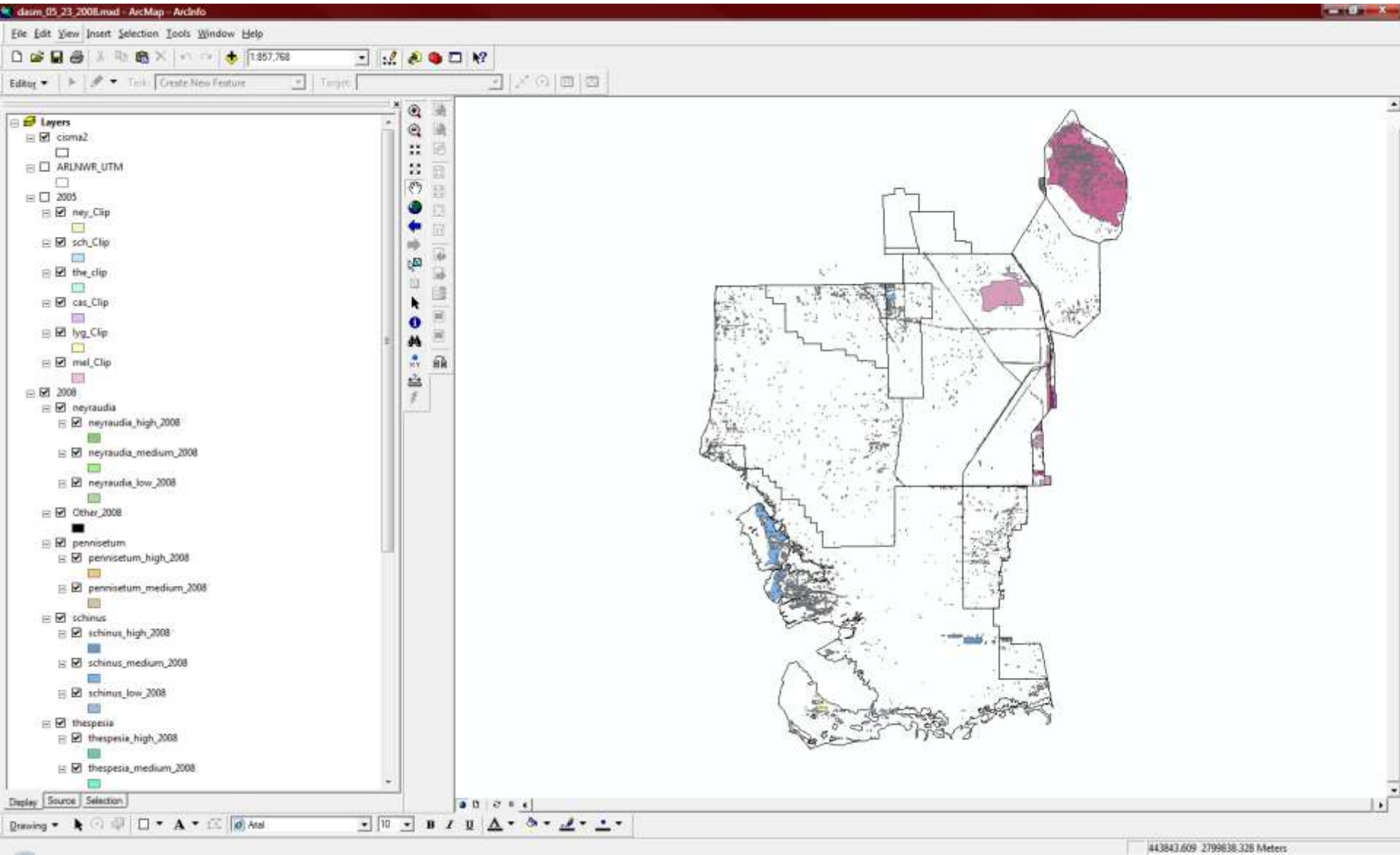
Amnesty Day

Minimizing the impacts nonnative species have on Florida's native fish, wildlife and marine life.

- Nonnative Mammals
- Nonnative Birds
- Nonnative Reptiles
- Nonnative Amphibians
- Nonnative Freshwater Fish
- Invasive Plant Management



Digital Aerial Sketchmapping



View Distribution on Google Maps, Select Species:



melaleuca
Melaleuca quinquenervia



Brazilian peppertree
Schinus terebinthifolius



old world climbing fern
Lygodium microphyllum



Australian pine
Casuarina equisetifolia



burmareed
Neyraudia reynaudiana



portia tree
Thespesia populnea



elephant grass
Pennisetum purpureum

Digital Aerial Sketchmapping 2008

old world climbing fern - *Lygodium microphyllum* (Cav.) R. Br.

Density: ● Low ● Medium ● High

[View 2005 Data](#)

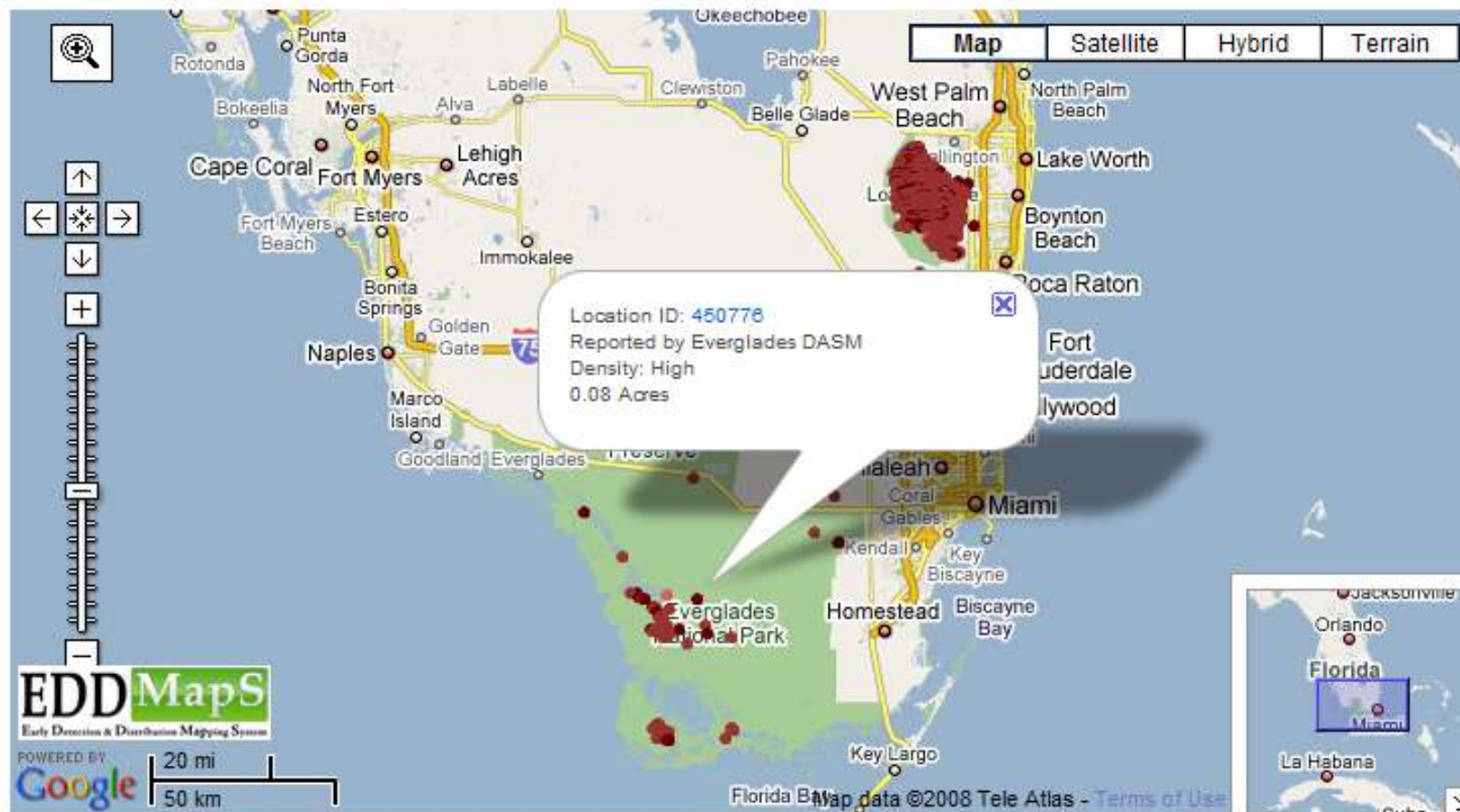


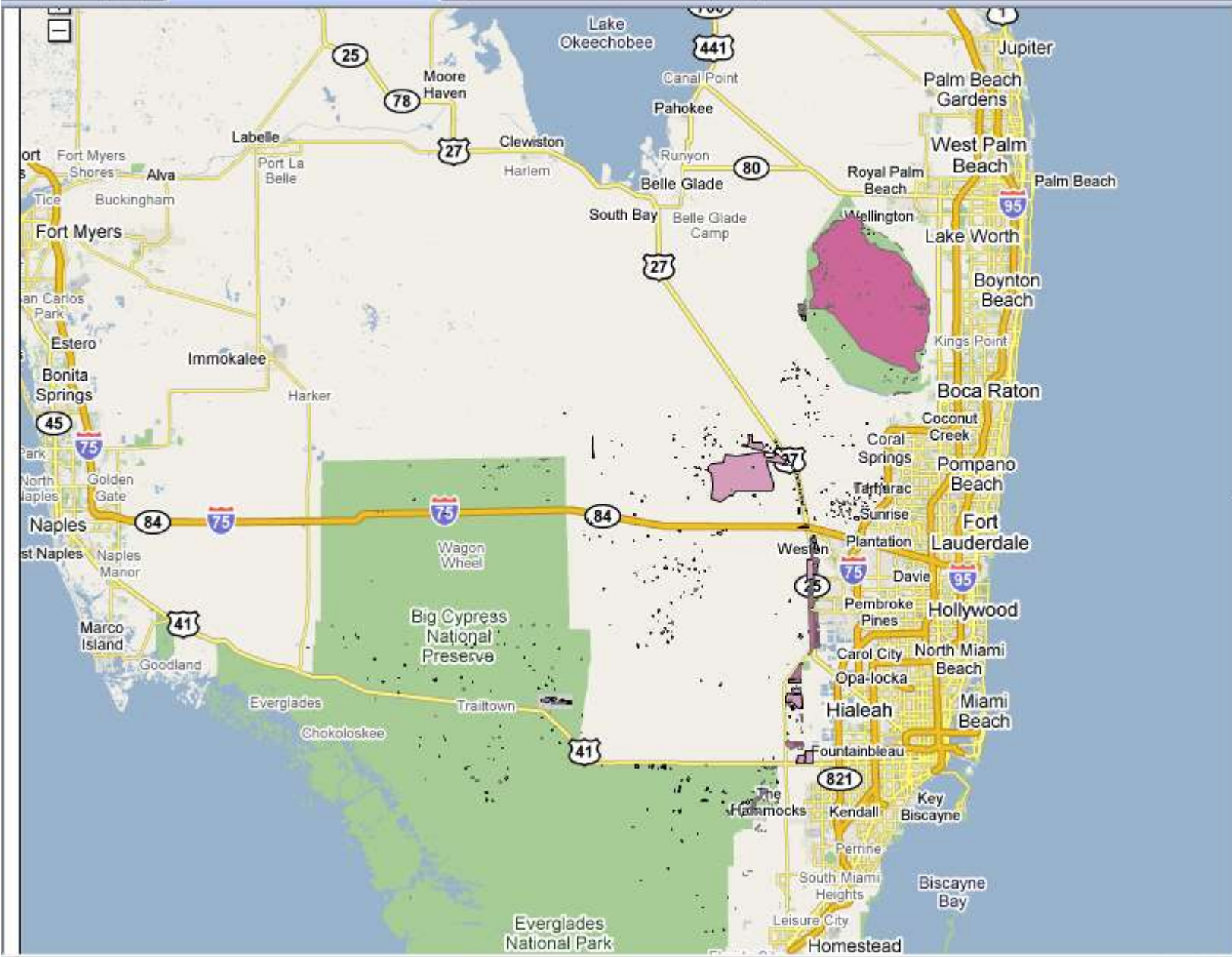
Digital Aerial Sketchmapping 2008

old world climbing fern - *Lygodium microphyllum* (Cav.) R. Br.

Density: ● Low ● Medium ● High

[View 2005 Data](#)





DASM 2008 Totals

Species	Density	Acres	Perimeter_mile
<i>Casuarina</i>	High	211.96	14.91
	Medium	571.69	46.54
	Low	767.55	25.98
	Total	1551.20	87.42
<i>Lygodium</i>	High	867.70	77.67
	Medium	4591.41	367.78
	Low	252.14	8.16
	Total	5711.25	453.60
<i>Melaleuca</i>	High	2943.97	98.52
	Medium	99732.28	286.83
	Low	32361.72	312.96
	Total	135037.96	698.31
<i>Neyraudia</i>	High	100.91	5.74
	Medium	632.06	36.88
	Low	14.75	1.36
	Total	747.71	43.97
<i>Pennisetum</i>	High	233.69	11.84
	Medium	296.79	10.45
	Total	530.48	22.30
<i>Schinus</i>	High	12852.65	412.87
	Medium	42021.90	1355.18
	Low	2790.56	137.17
	Total	57665.11	1905.22
<i>Thespesia</i>	High	3.81	0.52
	Total	3.81	0.52
<i>Other</i>		120.55	8.18
TOTAL		201247.52	3211.33

DASM 2005 Totals

Species	Density	Acres	Perimeter_mile
<i>Casuarina</i>	High	529.13	21.272
	Medium	4939.459	73.517
	Low	11345.708	51.276
	Total	16814.30	146.07

Everglades CISMA Partner Tools

Image Upload

The Center for Invasive Species and Ecosystem Health has an online image upload form that allows you to submit images. You have to sign into www.forestryimages.org and use Internet Explorer for this form to work.

<http://www.forestryimages.org/contribute/member/>

The first time you use this, the page will take longer than usual to load. It will want to install an ActiveX control called "Aurigma Image Uploader". Once this is installed, you can send the images over the internet rather than through e-mail. The images will be uploaded into a folder with the batch name you provide. The images will be added and you will get credit as the photographer.

Blog

<http://www.evergladescisma.org/blog/>

List Serv

To subscribe, unsubscribe and manage your subscription, <http://listserv.uga.edu/cgi-bin/wa?SUBED1=evergladescisma&A=1>

File Sharing




Login, upload and share your files, <http://www.evergladescisma.org/file/cfm.cfm>

Upload Images




JPG, TIF, DOC, XLS, PCD, TXT, PPT may be uploaded.

Batch Name:

- Desktop
 - Documents
 - Pictures
 - Computer
 - Recycle Bin
 - Control Panel
 - Public
 - Chuck Bargeron
 - Network
 - 007
 - DASM_2008_AcresPerimeter5_28...
 - Development
 - ecisma
 - EDDMapS
 - fmASMap
 - grant reports
 - grants
 - images
 - 103NCD70
 - Art Miller Pictures
 - mapping
 - NA EPPC
 - presentations
 - thumbdrive
 - To add to web
 - travel

DSC_1473.JPG
DSC_1474.JPG
DSC_1475.JPG

DSC_1476.jpg
DSC_1477.JPG
DSC_1478.JPG

Name	Size	Type	Modified
Drop files here			

Everglades CISMA

Welcome to the Everglades CISMA Blog

Posted At : July 10, 2008 6:48 PM | Posted By : Admin

Related Categories: [News](#)

Welcome to the Everglades CISMA Blog, more info coming soon.

Comments (0) |
 Print |
 Send |
 del.icio.us |
 Digg It! |
 Linking Blogs | 1 Views

There are no comments for this entry.

[Add Comment]

ARCHIVES BY SUBJECT

[News \(1\) \[RSS\]](#)

CALENDAR

<< July 2008 >>

Sun	Mon	Tue	Wed	Thu	Fri	Sat
		1	2	3	4	5
6	7	8	9	10	11	12
13	14	15	16	17	18	19
20	21	22	23	24	25	26
27	28	29	30	31		

LATEST FROM BUGWOOD BLOG

[Why is moving firewood a bad thing?](#)

[New features added to the BugwoodWiki](#)

[National Plant Diagnostic Network Crop Biosecurity](#)

[Online Training Modules for First Detectors](#)

[Laurel wilt officially described and named *Raffaelea lauricola*](#)

[Image Recruiting for Federal Noxious Weeds](#)

NAVIGATION

[Home](#)

RECENT ENTRIES

[Welcome to the Everglades](#)

BlogCFC Administrator Everglades CISMA: Logon

Username

Password

Login



Home
Add Entry
Entries
Categories
Comments
Refresh Blog Cache
Settings
Subscribers
Mail Subscribers

Pod Manager
File Manager
Pages
Slideshows
Textblocks

Your Blog
Your Blog (New Window)
Your Blog Stats

BlogCFC Administrator Everglades CISMA: Entry Editor

Main Additional Settings

You can use `<code>...</code>` to add formatting to code blocks.
You can dynamically include textblocks using `<textblock label="...">`.
If you want to show only a portion of your entry on the home page, separate your content with the `<more/>` tag.

title:

body:



www.listserv.uga.edu

The University of Georgia

[Home](#) | [Browse](#) | [Manage](#) | [Request](#) | [Manuals](#) | [Register](#)

Join or leave the EVERGLADESCISMA list

This screen allows you to join or leave the EVERGLADESCISMA list. To confirm your identity and prevent third parties from subscribing you to the list against your will, an e-mail message with a confirmation code will be sent to the address you specify in the form. Simply wait for this message to arrive, then follow the instructions to confirm the operation.

Alternatively, you can [login with your LISTSERV password](#) (if you have one) and update your subscription interactively, without e-mail confirmation.

Your e-mail address:

Your name:

Subscription type:

- Regular [NODIGEST]
- Digest (traditional) [NOMIME DIGEST]
- Digest (MIME format) [NOHTML MIME DIGEST]
- Digest (HTML format) [HTML DIGEST]
- Index (traditional) [NOHTML INDEX]

Current directory: ./custom

Upload File

Browse...

Upload

 overwrite existing

upload multiple files

New File/Directory

Create File

Create Directory

[Home Directory](#) | [Refresh Current Directory](#)

Name	Size	Last Modified	Options
subdir	0 bytes	2007-08-19 06:21:00	delete rename move/copy
2008EISSagenda.pdf [DL]	134 KB	2008-07-11 12:05:00	delete rename move/copy
Business Process.jpg [DL]	71 KB	2008-07-11 12:04:00	delete rename move/copy manipulate
ecismaDASM.zip [DL]	4 MB	2008-07-11 12:06:00	delete rename move/copy view/unzip
FY08_CISMA_Work_Plan.pdf [DL]	194 KB	2008-07-11 12:05:00	delete rename move/copy
fy08_WorkPlan_progress.doc [DL]	73 KB	2008-07-11 12:04:00	delete rename move/copy

Found 1 subdirectory and 5 files.

The file(s) in this directory total 4,473,727 bytes. [Show total disk space usage here](#)Powered by [CFFM v.1.17](#)

Report a Sighting of a Invasive Species

New to EvergladesCISMA.org?

In order to report an invasive species, you will need to register. All information will be for internal use only. If you are already registered to use EDDMapS, you may login using your existing username and password.

[Register Now](#)

Already Registered?

Please Log In:

User Name: Password: [Login](#)

Register to Submit Data

If you have any questions, e-mail us at: bugwood@uga.edu

***First name:**

***Last name:**

***Organization/Company:**

***E-mail address:**

Knowledge Levels:

***Plants:**

***Reptiles/Amphibians:**

***Fish:**

***Birds:**

***Mammals:**

***Invertebrates:**

Note: Your user name and password cannot contain spaces.

***User name:**

***Password:**

***Required fields**

Title:

Unit/Department:

Address:

City/State/Zip:

Phone Number:

Additional Comments:

Submit

Report Invasive Species in the Greater Everglades Area

- [Plants](#)
- [Reptiles/Amphibians](#)
- [Fish](#)
- [Birds](#)
- [Mammals](#)
- [Insects and Other Invertebrates](#)

Report a Sighting of an Invasive Reptile or Amphibian

Pest:
To report a pest not listed, e-mail bugwood@uga.edu.

Observation Date: (?)

County:

Habitat: (?)

Location:

Latitude:
Must be expressed in Decimal Degrees.

Longitude:
Must be expressed in Decimal Degrees.

Datum: (?)

Ownership: (?)

* If reporting infestation on private land, be sure to have landowner's permission.

Report a Sighting of a


Pes
Observation Date
County
Habitat

Location:

Latitude:

Ownership:

Google Map Preview - Windows Internet Explorer
http://www.evergladescisma.org/report/popuploc.cfm?state=fl



Map Satellite Hybrid

Latitude: 25.522614647623292 Longitude: -80.859375

Update Report Form

Internet | Protected Mode: Off 100%

Mus...
Degrees.
Degrees.

Preview Location Choose Location Geocode an Address
Convert from UTM's Convert from DMS

Datum: Select One (?)
Ownership: Select One (?)

* If reporting infestation on private land, be sure to have landowner's permission.

Everglades CISA

Cooperative Invasive Species Management

ABOUT CISMA DISTRIBUTION MAPS REPORT A SIGHTING

Report a Sighting of an

Pest:

Observation Date:

County:

Habitat:

Location:

Latitude:

25.522614647623292

Must be expressed in Decimal Degrees.

Longitude:

-80.859375

Must be expressed in Decimal Degrees.

Preview Location

Choose Location

Geocode an Address

Convert from UTM's

Convert from DMS

Datum:

Select One (?)

Ownership:

Select One (?)

* If reporting infestation on private land, be sure to have landowner's permission.

Google Map Preview - Windows Internet Explorer

http://www.evergladescisma.org/report/popupmap.cfm

Latitude:25.522614647623292, Longitude:-80.859375

Map data ©2008 T

Internet | Protected Mode: Off

100%

UTM (Universal Transverse Mercator) to Decimal Degrees

X:

Y:

Zone:

Hemisphere: N S

Results: Latitude: Longitude:



Degrees Minutes Seconds to Decimal Degrees

Enter Degrees Minutes Seconds latitude:

Enter Degrees Minutes Seconds longitude:

Convert to Decimal

Clear Values

Results: Latitude:

Longitude:

Update Report Form



EDDMapS Geocode

Enter an address:

Latitude:

Longitude:

Address: Florida International University, Miami, FL 33199, USA

City: Miami

County: Miami-Dade

State: FL

Country: US

Accuracy: Unknown value



**Comments/
Describe What
You Saw:**

Identified by:

 (if you didn't identify)

Image 1:

Caption:

Credit:

 (if not your image)

Image 2:

Caption:

Credit:

 (if not your image)

Image 3:

Caption:

Credit:

 (if not your image)

Image 4:

Caption:

Credit:

 (if not your image)

Image 5:

Everglades *CISMA*

Cooperative Invasive Species Management Area

[Home](#) | [About](#) | [Contact](#)

- [ABOUT CISMA](#)
- [DISTRIBUTION MAPS](#)
- [REPORT SIGHTINGS](#)
- [SPECIES INFORMATION](#)
- [NEWS](#)
- [PARTNERS](#)
- [TOOLS](#)

View your Record: [454272](#)

[Return to Submission Form](#)

other species

[Save as Adobe PDF](#)

Source:	Chuck Bargeron, UGA
Habitat:	Other
Comments:	alien invader from Georgia
Coordinates:	25.755856, -80.372235
NADatum:	WGS84
Ownership:	Other/Unknown
Status:	Not Verified
Observation Date	July 16, 2008
Date Entered	July 12, 2008



Photo By:	unknown
Photo Caption:	one good looking guy

Coming Soon

- Generate Herbarium Labels
- Email for review and to announce
- User updatable records

Contact Info:

Chuck Barger

cbarger@uga.edu

229-386-3298