



# Big Cypress National Preserve

James N. Burch, PhD.  
BICY Resource Management Div.

# Invasive Species Programs

- Exotic Plant Management
- Description
  - Removal and Control of Alien Vascular Plants
- Objective
  - Restoration and Maintenance of Native Biological Communities
- Partners
  - NPS Florida and Caribbean Exotic Plant Management Team
  - NPS Florida and Caribbean Small Parks Hit Squad
  - Florida Department of Environmental Protection
  - NPS Fire Management
  - USGS/BRD
  - NPS I&M Program
  - Student Conservation Program
- Start/End Dates
  - 1978 - present



# Invasive Species Programs

- Status
  - Ongoing
- Funding (FY2008): \$399,000 (NPS Challenge Funds), and outside funding as available
- Annual Summary
  - FY 2008 (to date):

Schinus	18,591 ac
Lygodium	3,227 ac



# Priority Plant Species

- **Priority Plants**

- *Schinus terebinthifolius*
- *Lygodium microphyllum*
- *Melaleuca quinquenervia*

- **Newly Detected Plant Species**

- *Nymphoides cristata*



# Priority Animal Species

- **Priority Animals**
  - Bromeliad weevil
- **Newly Detected Animal Species**
  - Big snakes

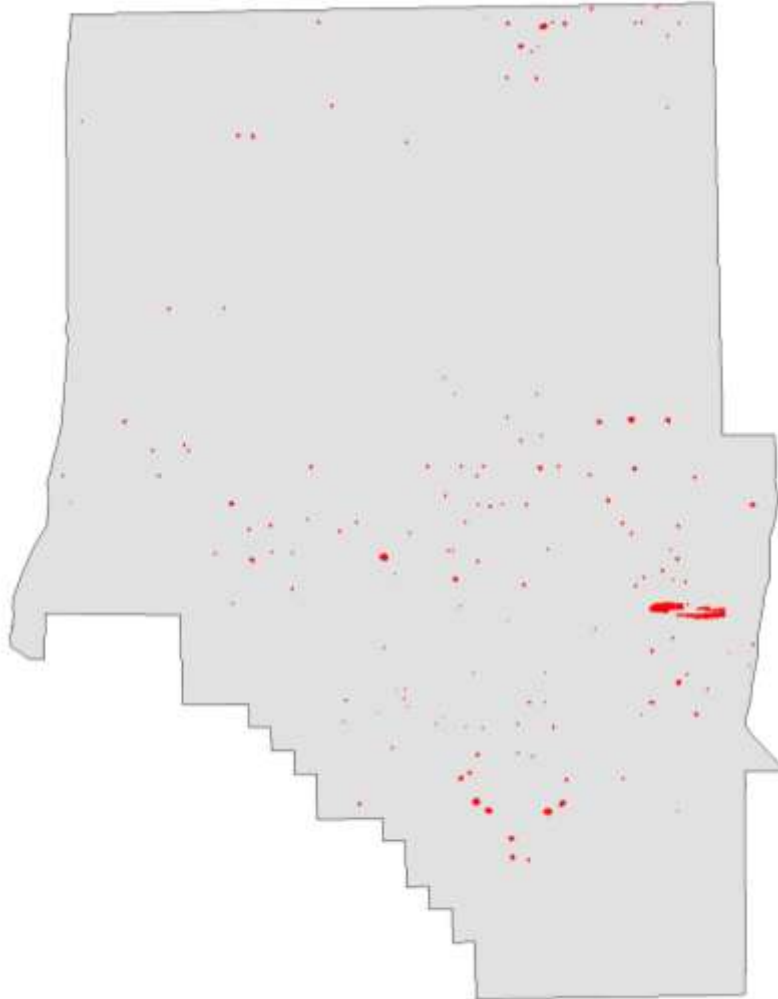


# Monitoring

- Systematic Reconnaissance Flights
- Exotics sightings recorded



# Digital Aerial Sketch Mapping

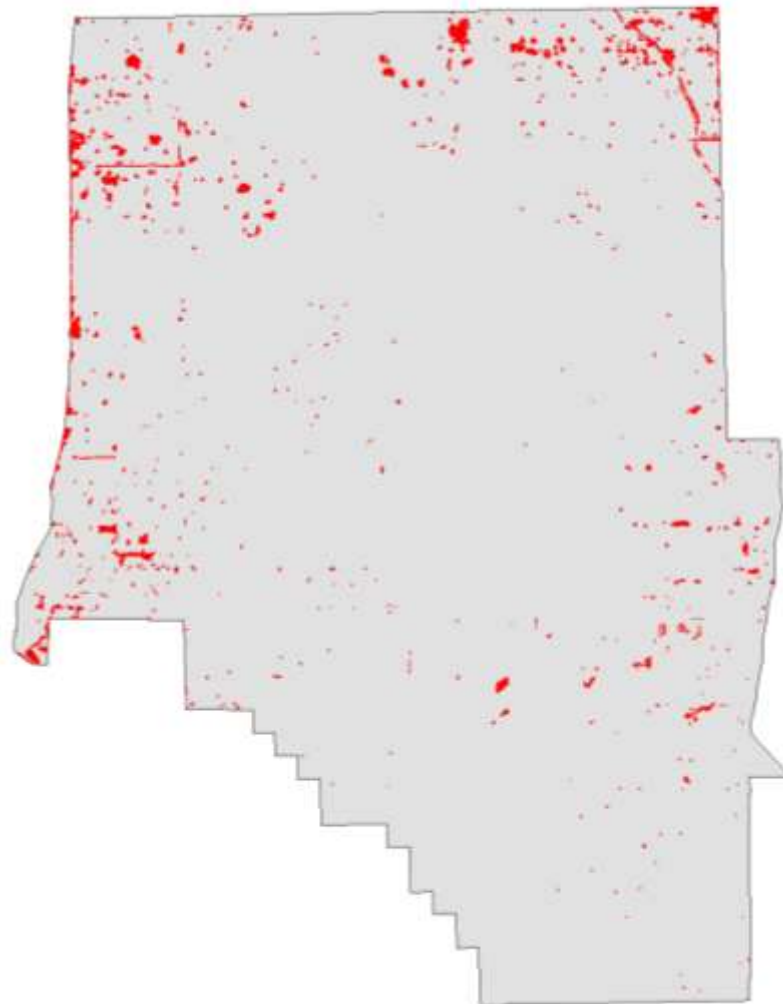


Big Cypress National Preserve

## Melaleuca

<u>Coverage Class</u>	<u>Acres</u>
High	34
Medium	641
<u>Low</u>	<u>945</u>
Total	1620

# Digital Aerial Sketch Mapping



Big Cypress National Preserve

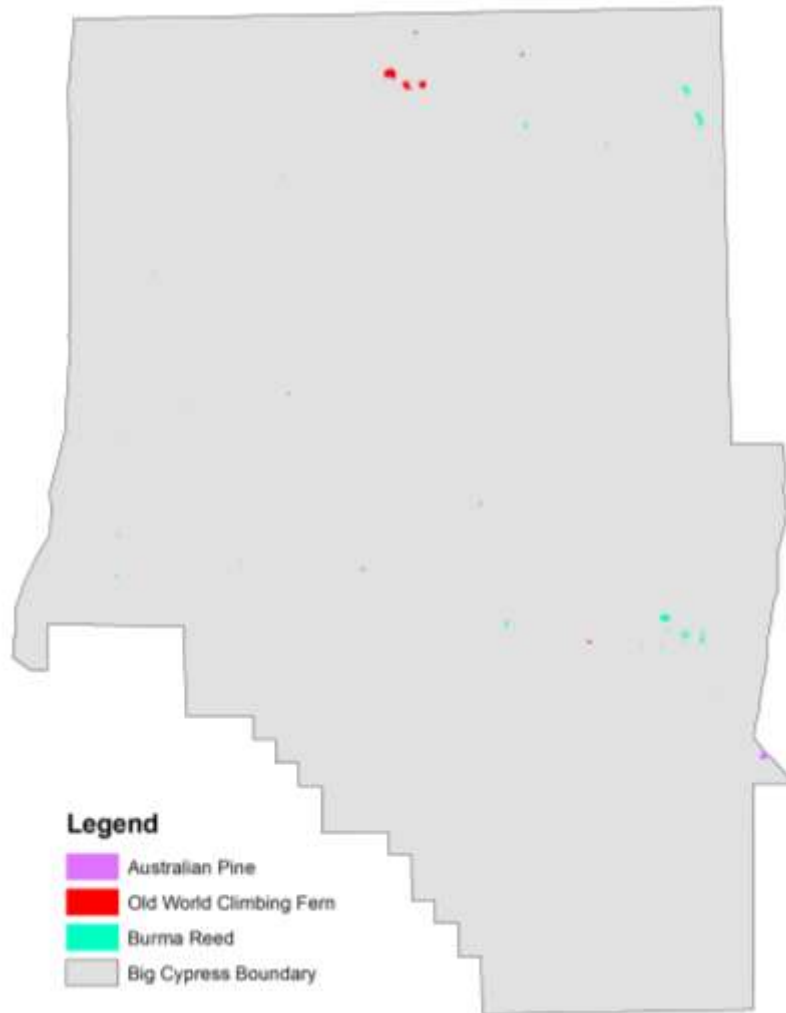
## Brazilian Pepper

<u>Coverage Class</u>	<u>Acres</u>
High	2196
Medium	8228
Low	663
<b>Total</b>	<b>11086</b>

# Digital Aerial Sketch Mapping



## Big Cypress National Preserve



### Australian Pine

Coverage Class	Acres
High	1
Medium	10
Low	99
<b>Total</b>	<b>110</b>

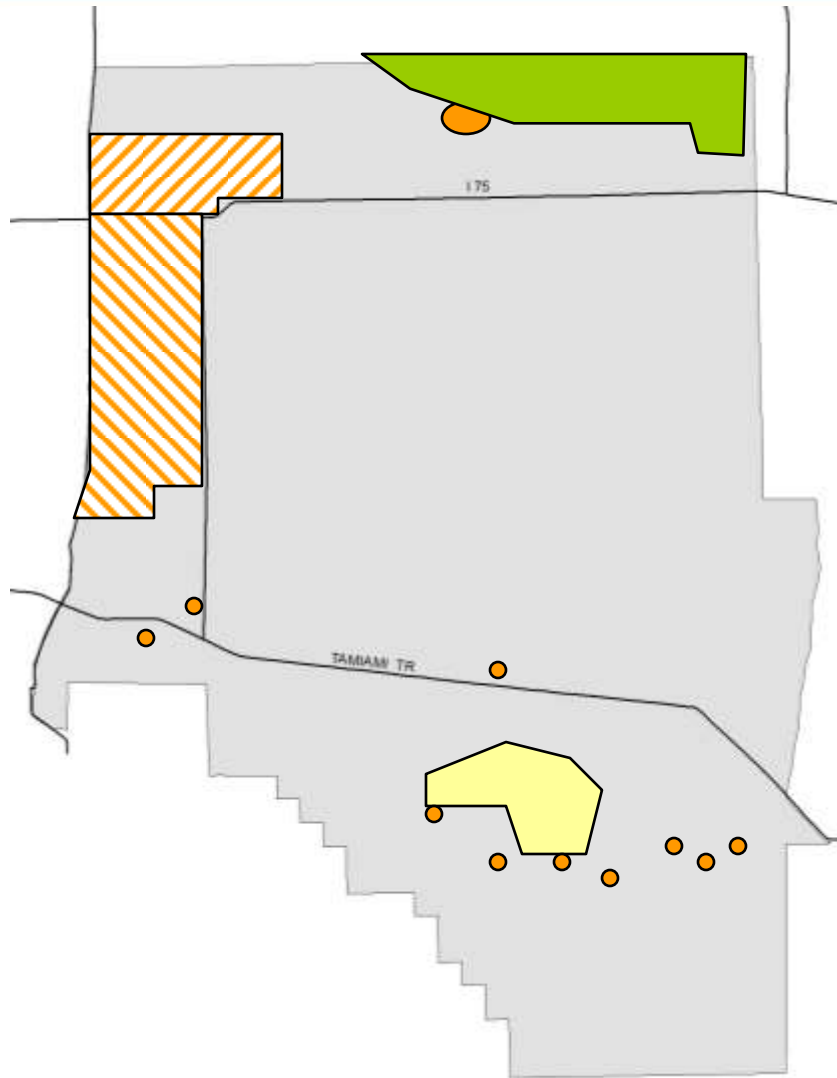
### Old World Climbing Fern





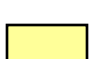
Coverage Class	Acres
High	
Medium	196
Low	
<b>Total</b>	<b>196</b>

### Burma Reed

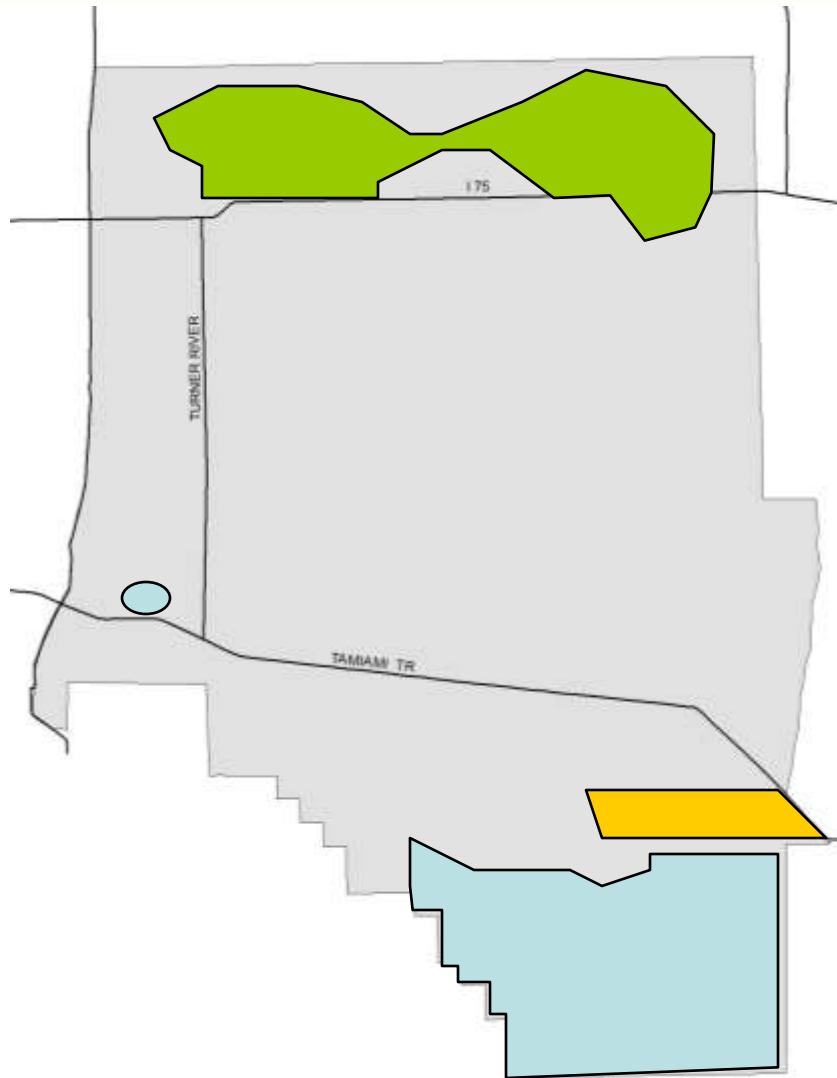
Coverage Class	Acres
High	
Medium	202
Low	13
<b>Total</b>	<b>215</b>




# Fiscal Year Treatments: FY 2008



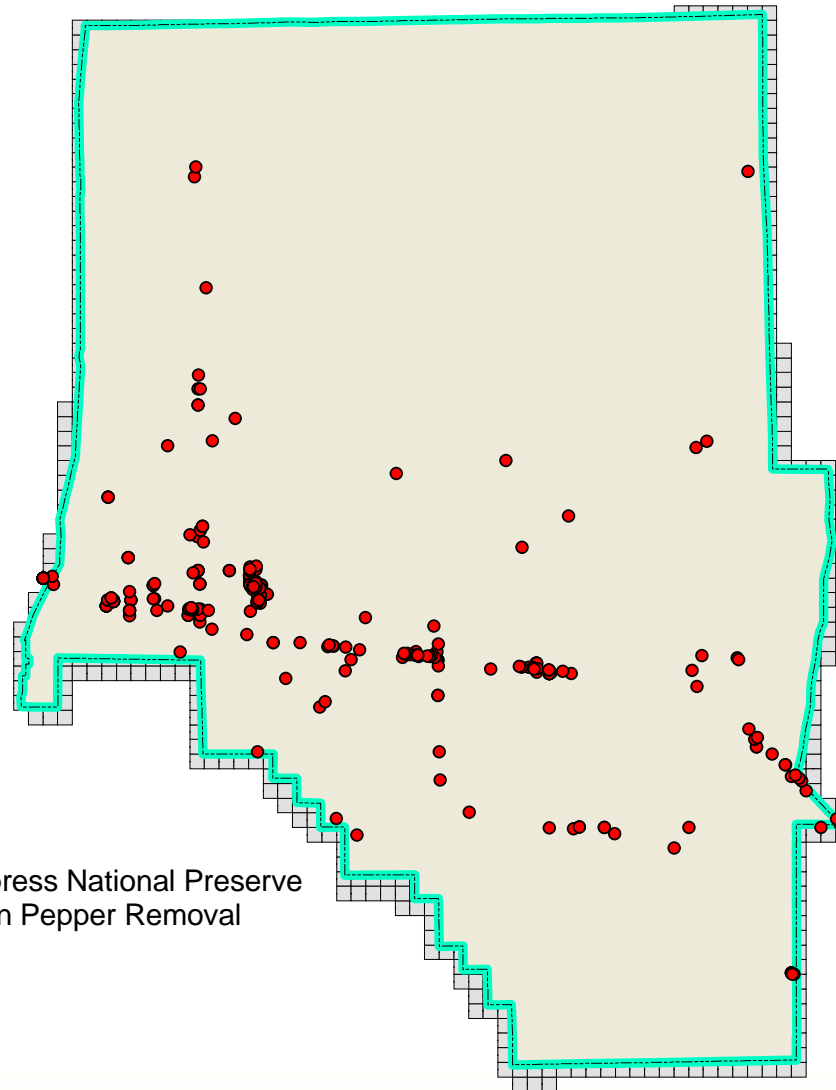
-  Schinus, completed
-  Schinus, proposed
-  Schinus, current
-  Lygodium
-  Melaleuca spot treatment

# Planned Treatments: FY 2009



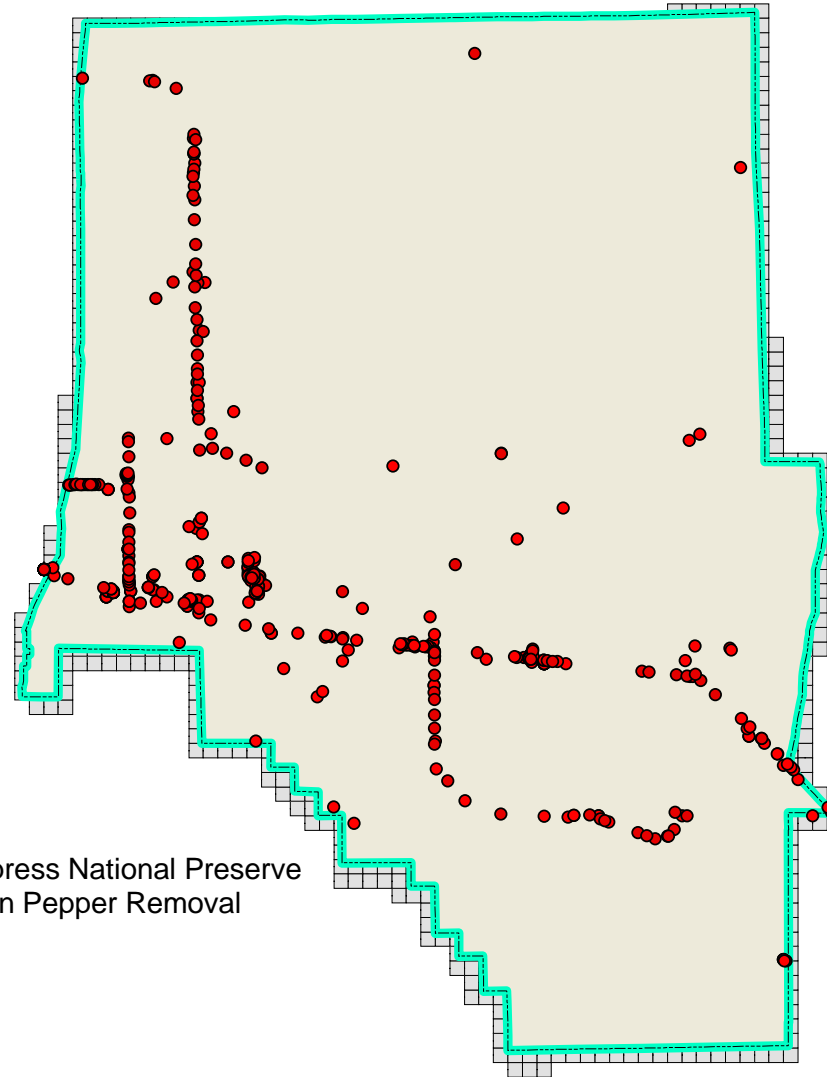
-  Burned area
-  Loop Unit re-treatment
-  Schinus treatments

# Innovations and Successes



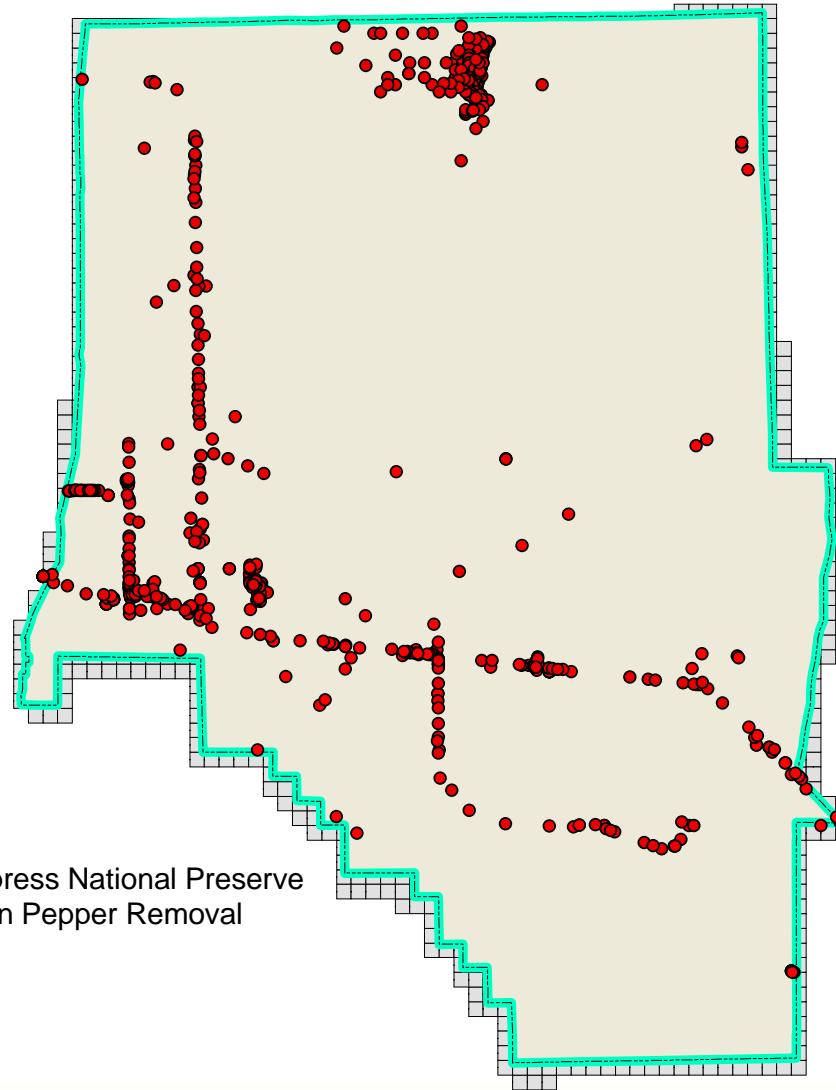
Big Cypress National Preserve  
Brazilian Pepper Removal  
to 2002

# Innovations and Successes



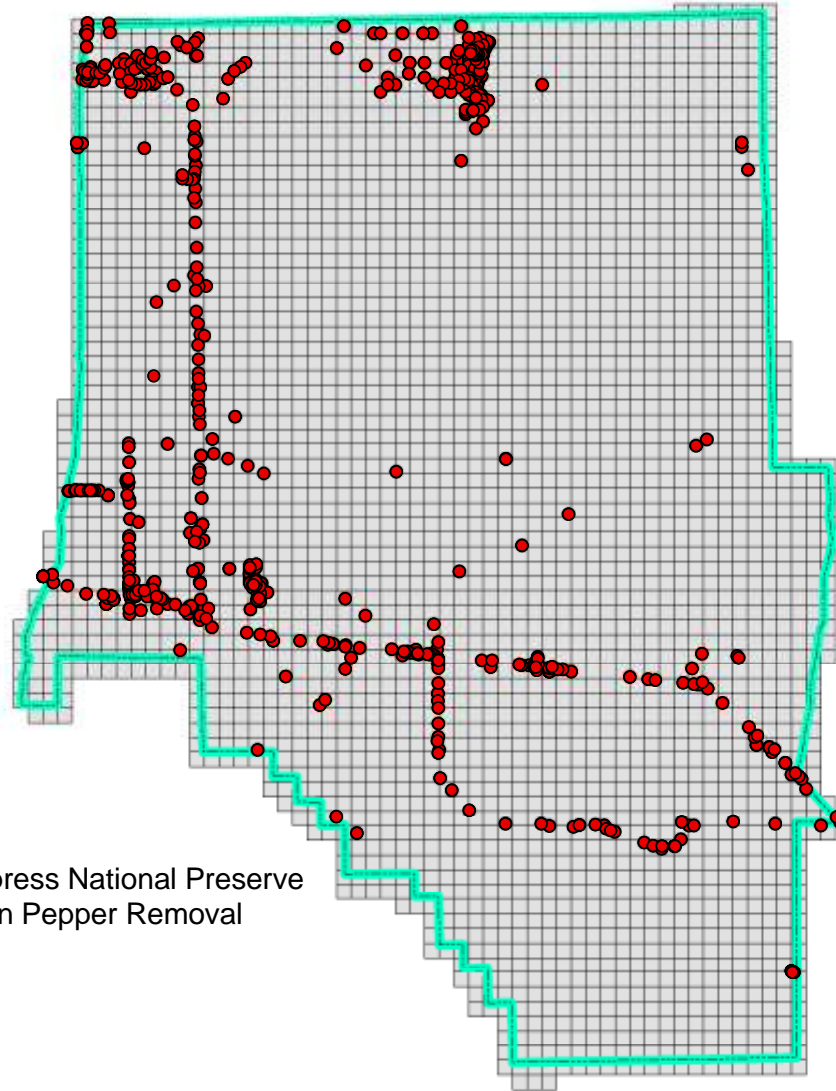
Big Cypress National Preserve  
Brazilian Pepper Removal  
to 2004

# Innovations and Successes



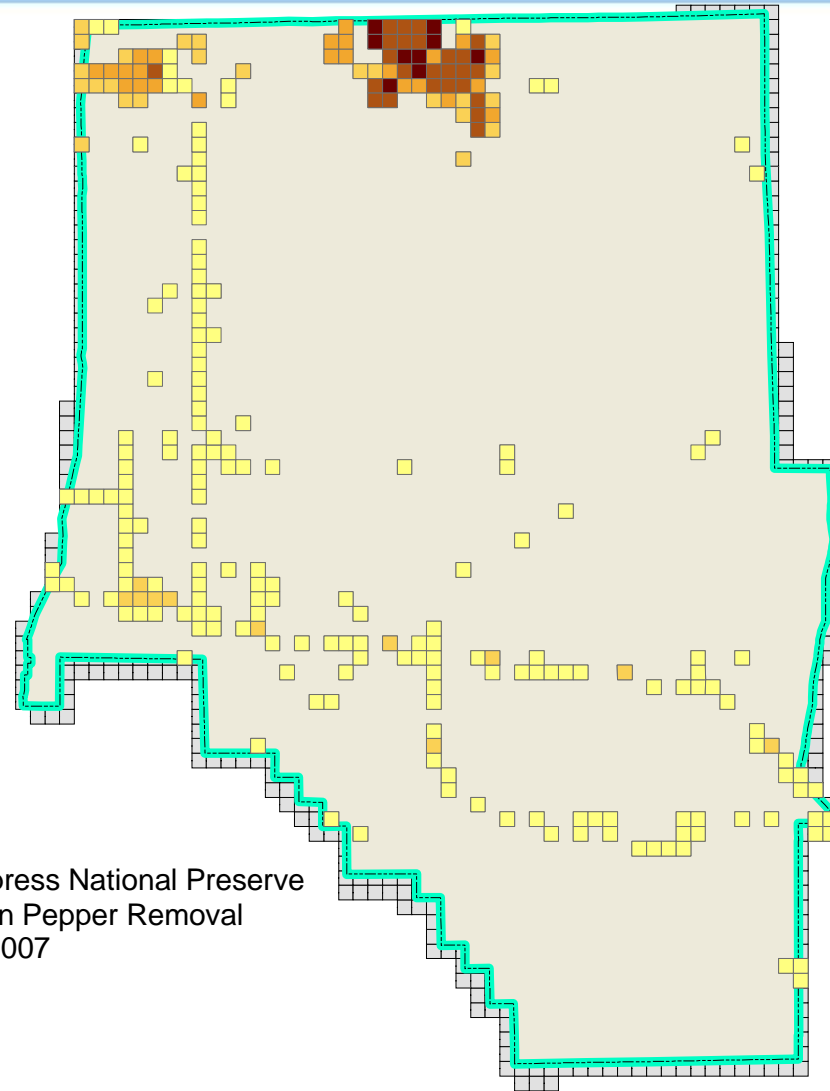
Big Cypress National Preserve  
Brazilian Pepper Removal  
to 2006

# Innovations and Successes



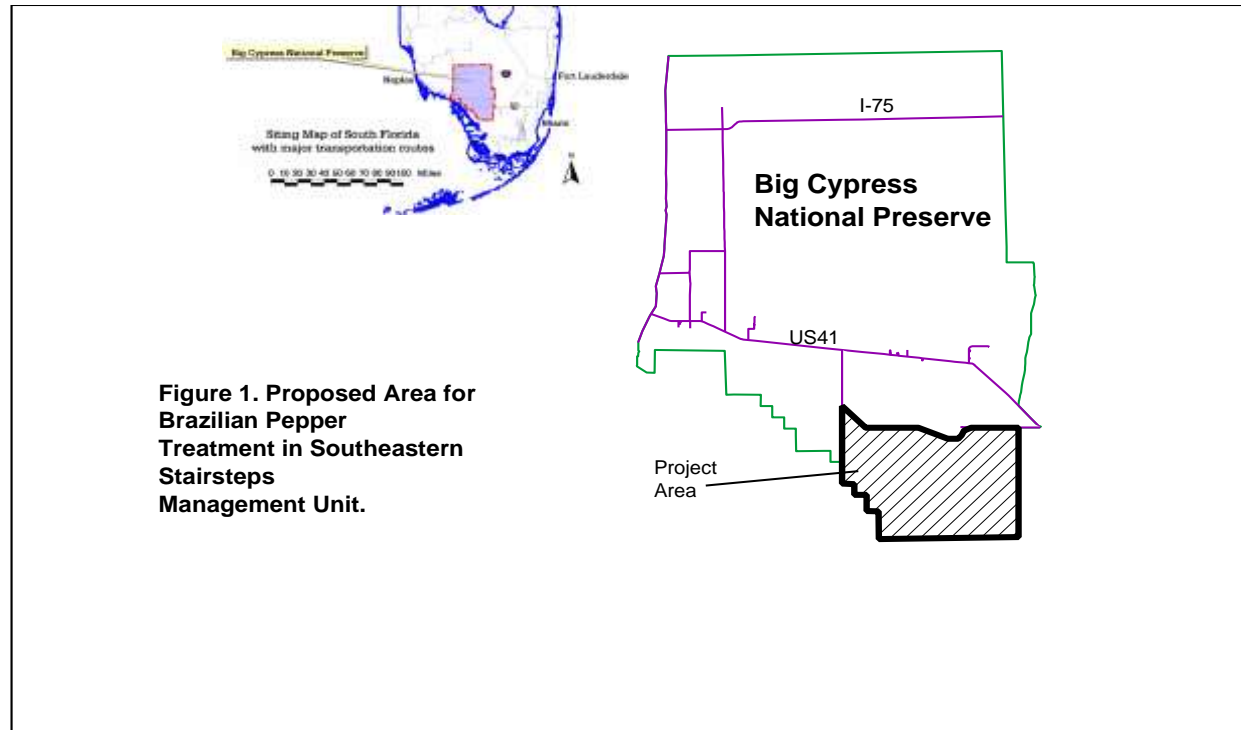
Big Cypress National Preserve  
Brazilian Pepper Removal  
to 2008

# Innovations and Successes

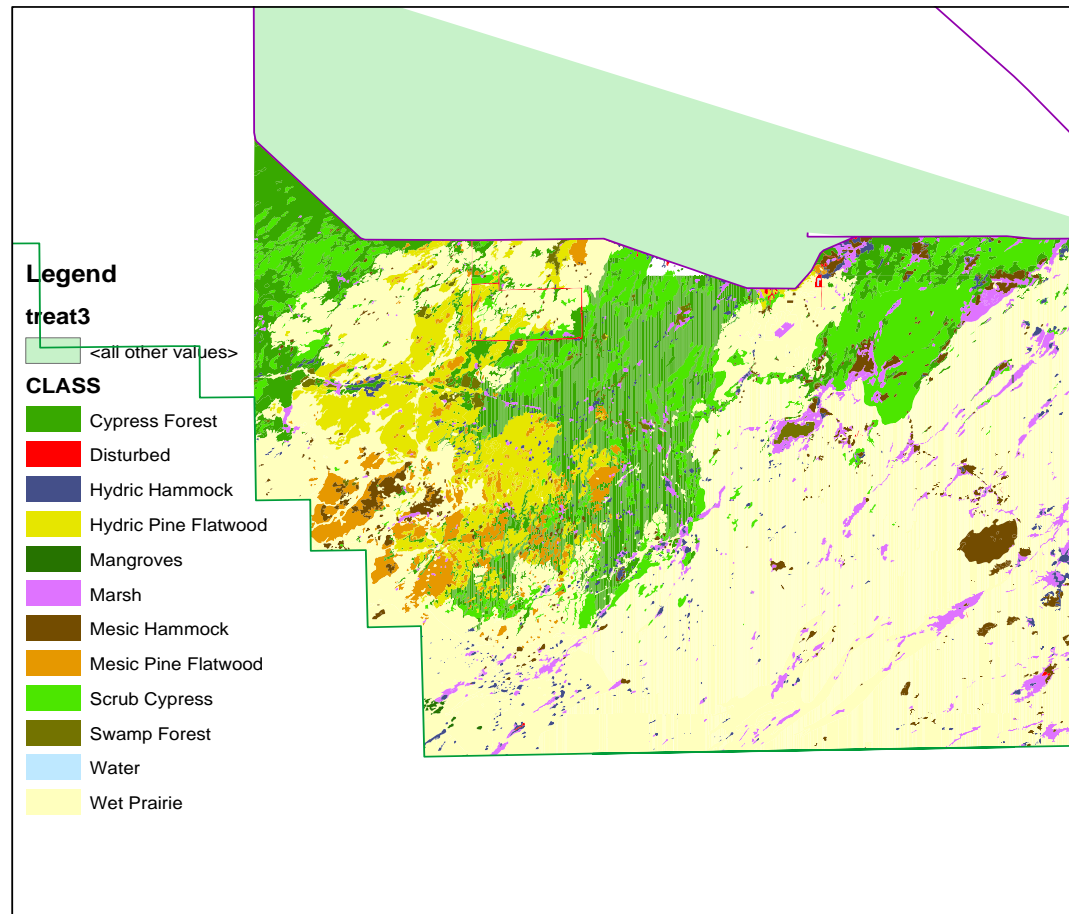


Big Cypress National Preserve  
Brazilian Pepper Removal  
2000- 2007

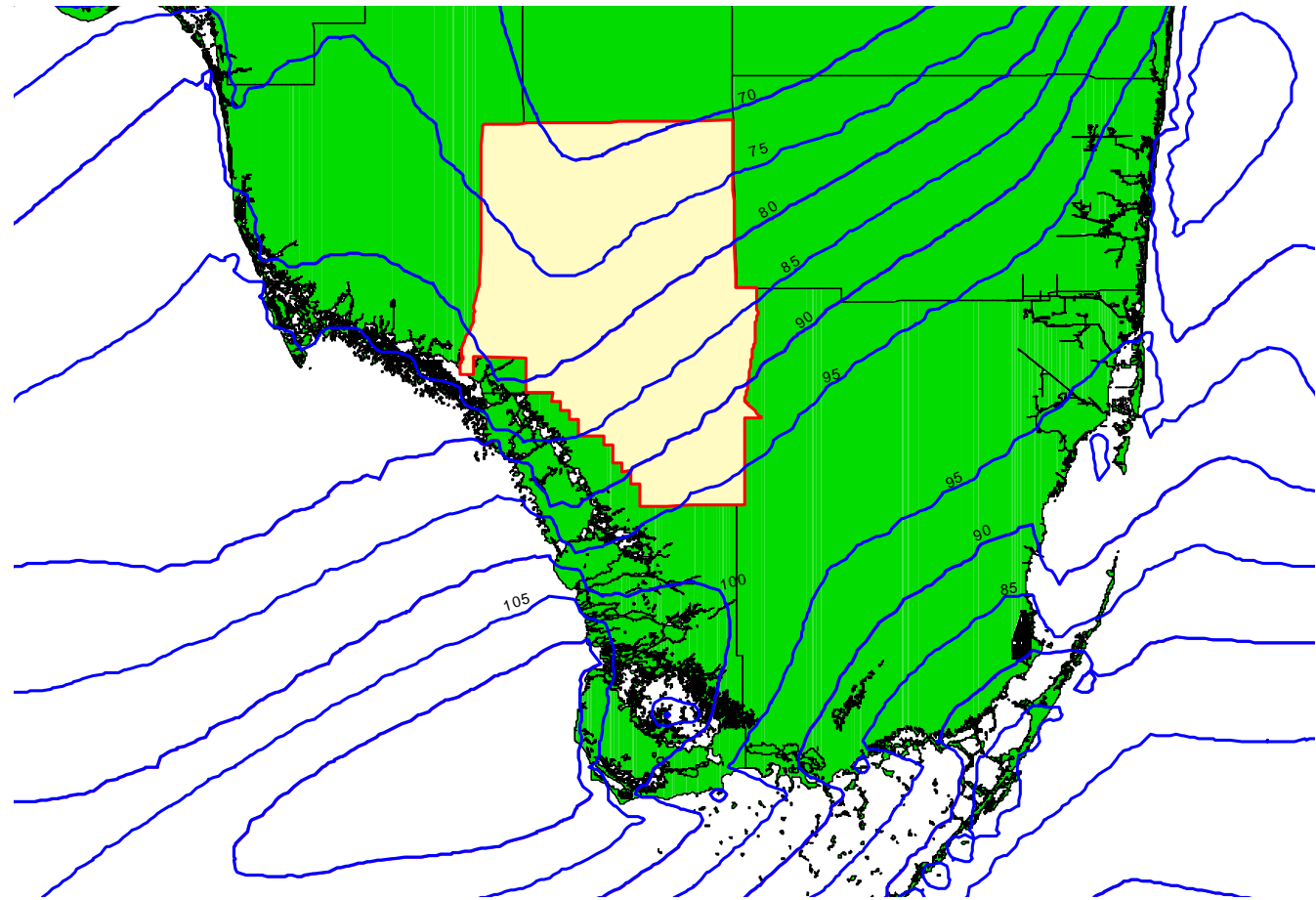
# Innovations and Successes



# Innovations and Successes



# Innovations and Successes



# Innovations and Successes



# 2008 Everglades Invasive Species Summit



# Innovations and Successes



**THE END**