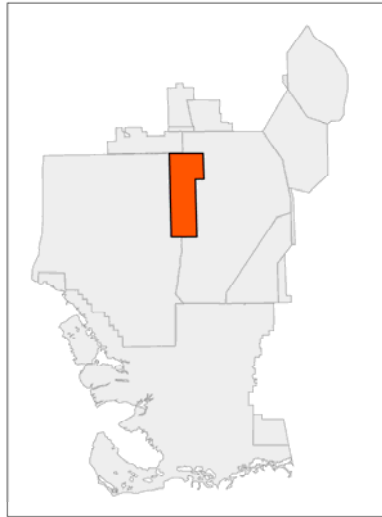


Miccosukee Tribe of Indians of Florida

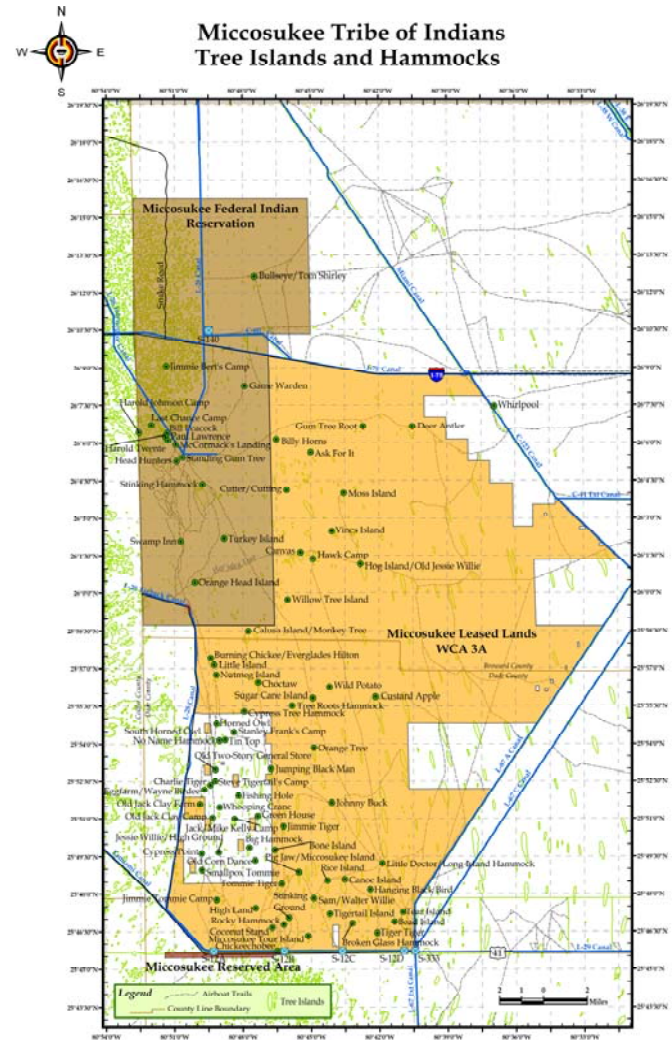
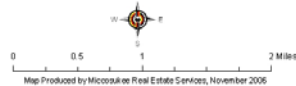


Rory Feeney: Fish and Wildlife Director
Gintautas Zavadzkas: Fisheries Biologist

History/Background



Miccosukee Reserved Area



Map produced by the Miccosukee Tribe Water Resources Department, revised October 2008

Priority Animal Species

- **Priority Animals**

- Burmese Python, exotic Apple Snail, Asian walking catfish, and Cichlid sp.

- **Newly Detected Animal Species**

- No significant detections



Invasive Species Programs

- GIS Mapping and removal of Island Apple Snail (*Pomacea insularum*)
- **Description**
 - The Island applesnail (*P. insularum*) was identified, marked with GPS and treated with vegetable oil to prevent maturation of the egg cluster. The area of interest was the L-29 Canal between the S-12A and S-12B structures.
- **Objective**
 - To gauge the distribution of *P. insularum* and determine what type of studies are required within WCA3A.
- **Partners**
 - SFWMD and ENP
- **Start/End Dates**
 - July 2008 - ongoing
- **Status**
 - Over 400 cluster mapped and treated. Reports of *P. insularum* in WCA3A.
- **Funding:** n/a
- **Annual Summary**
 - The presence of *P. insularum* in the L-29 warrants additional surveying in Water Conservation Area 3A.



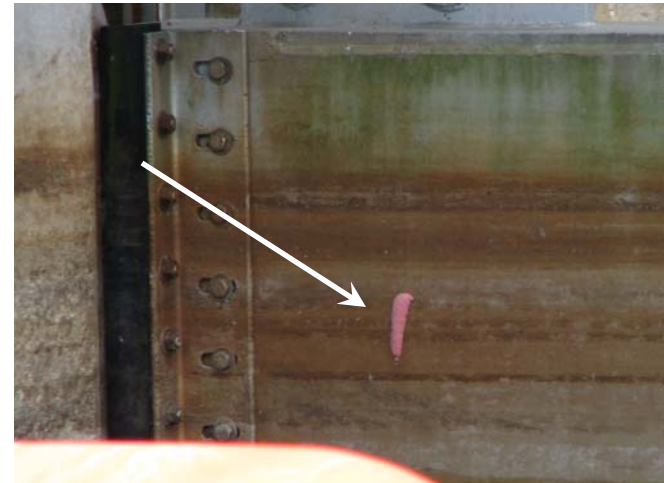
2009 Everglades Invasive Species Summit

- GIS Mapping and removal of Island Apple Snail (*Pomacea insularum*)



2009 Everglades Invasive Species Summit

- GIS Mapping and removal of Island Apple Snail (*Pomacea insularum*)



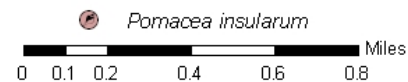
2009 Everglades Invasive Species Summit

- GIS Mapping and removal of Island Apple Snail (*Pomacea insularum*)



**Exotic Apple Snail Egg Cluster Locations
June 2009**

Map produced by the Miccosukee Fish and Wildlife Department 2009





- Burmese python reporting and public outreach program
- **Description**
 - The Burmese python (*Python molurus bivittatus*) has become an increasing problem along US41 between 30 and 40 mile bend. The Tribal community and department staff have been responding to live python observations and road kill notifications.
- **Objective**
 - To gage the occurrence and distribution of Burmese pythons and determine what type of studies are required within WCA3A.
- **Partners**
 - SFWMD and ENP
- **Start/End Dates**
 - 2007 - ongoing
- **Status**
 - Over 20 pythons reported during the past 6 months. Probably only a fraction of actual sightings. One 8' python found inside the kitchen of a Tribal members house. Sizes range from 4 feet to 15 feet. Most active during Spring and morning hours.
- **Funding:** n/a
- **Annual Summary**
 - The increased reports of pythons suggest that their numbers are on the rise and that the python's robust fecundity will make population control difficult.

2009 Everglades Invasive Species Summit

Burmese python reporting and public outreach program



2009 Everglades Invasive Species Summit

Burmese python reporting and public outreach program



2009 Everglades Invasive Species Summit

Burmese python reporting and public outreach program



- A Viable Fisheries Resources for the Miccosukee Tribe

- **Description**

- Methyl mercury bioaccumulation has become an increasing problem in the fresh water ecosystem of South Florida. The Hg in the native fish and the presence of exotic species have impacted the Miccosukee traditional way of subsistence fishing.

- **Objective**

- The Miccosukee Tribe is attempting to develop a mercury safe fishery in the closed section of the Old Tamiami Canal that is sustainable for recreational, subsistence and cultural use by Tribal members.

- **Partners**

- USFWS, FWC, SFWMD, ACOE, and Nicholls State University

- **Start/End Dates**

- 2006 - ongoing

- **Status**

- 300 truck loads of vegetation removed. ~6 tons of exotic fish removed. 87% exotic. Solar aeration units online. Hg safe native fish restocking began 06/09.

- **Funding:** USFWS Tribal Wildlife Grant and extensive Tribal match

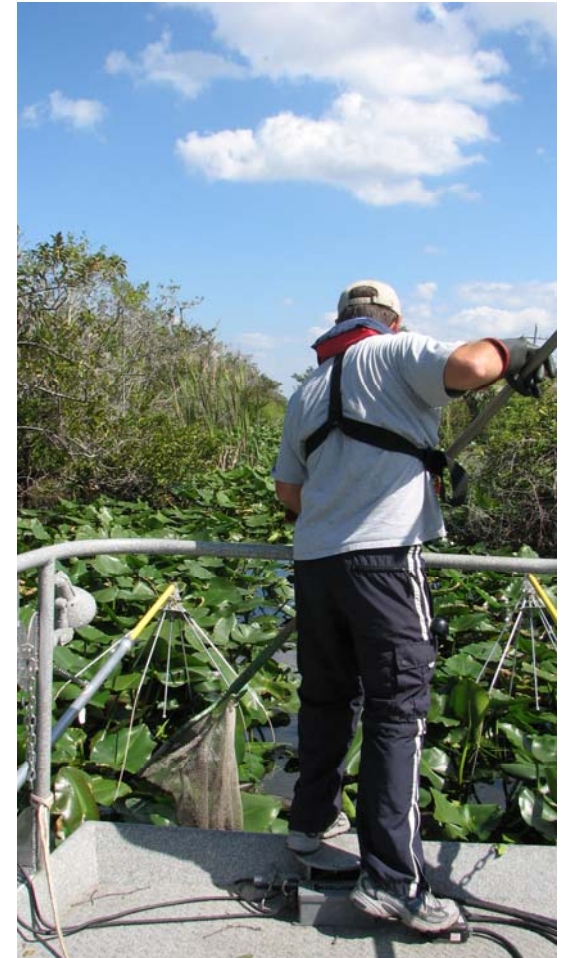
- **Annual Summary**

- The Tribe is ready to proceed in the implementation of the Miccosukee Fishery Management Plan which is an indispensable tool to restore the fishery resource and preserve the social, subsistent and cultural values for the long term benefit of the Tribe.



2009 Everglades Invasive Species Summit

A Viable Fisheries Resources for the Miccosukee Tribe



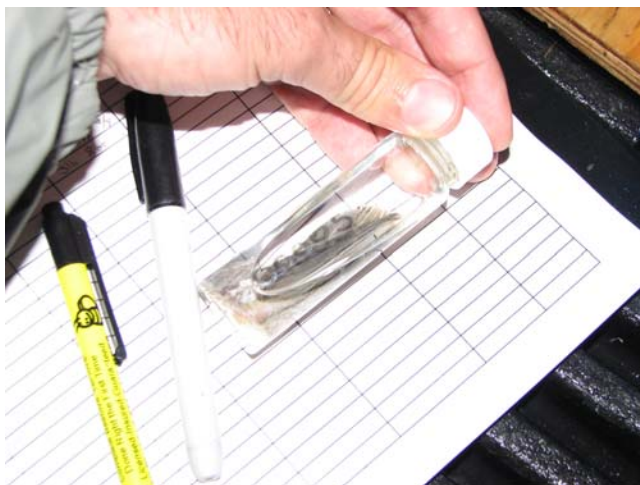
2009 Everglades Invasive Species Summit

A Viable Fisheries Resources for the Miccosukee Tribe



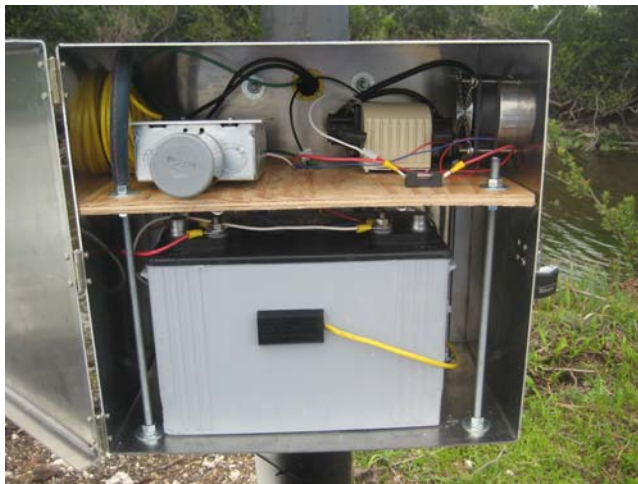
2009 Everglades Invasive Species Summit

A Viable Fisheries Resources for the Miccosukee Tribe



2009 Everglades Invasive Species Summit

A Viable Fisheries Resources for the Miccosukee Tribe



2009 Everglades Invasive Species Summit

A Viable Fisheries Resources for the Miccosukee Tribe

BEFORE



2009 Everglades Invasive Species Summit

A Viable Fisheries Resources for the Miccosukee Tribe

AFTER



A Viable Fisheries Resources for the Miccosukee Tribe

BEFORE



A Viable Fisheries Resources for the Miccosukee Tribe

AFTER



2009 Everglades Invasive Species Summit

A Viable Fisheries Resources for the Miccosukee Tribe

