



Aerial Spot Spraying

Exotic Plant Management in

Big Cypress National Preserve



Big Cypress National Preserve

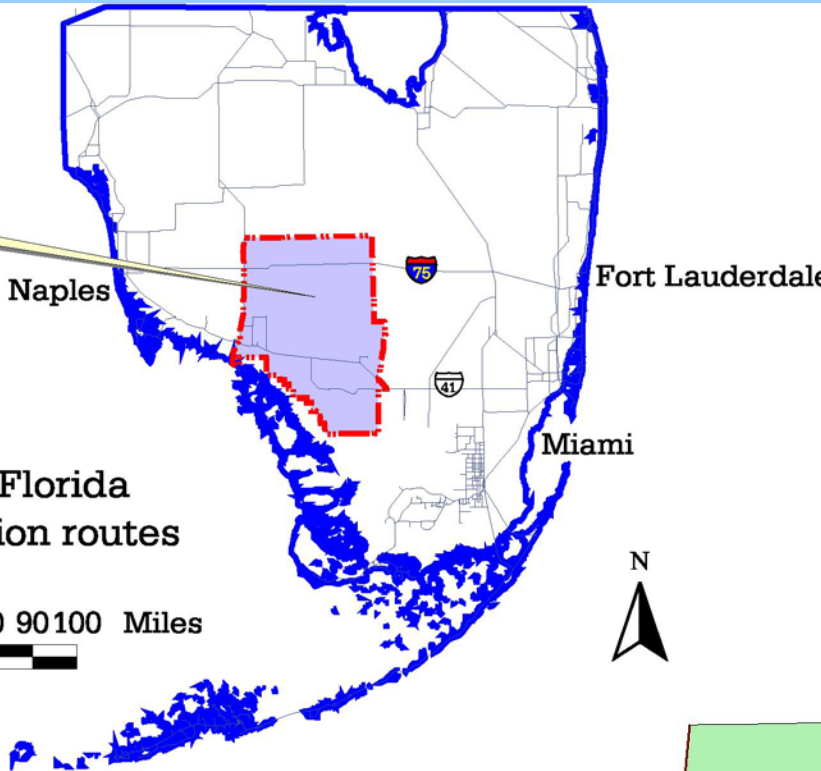
Naples

Fort Lauderdale

Miami

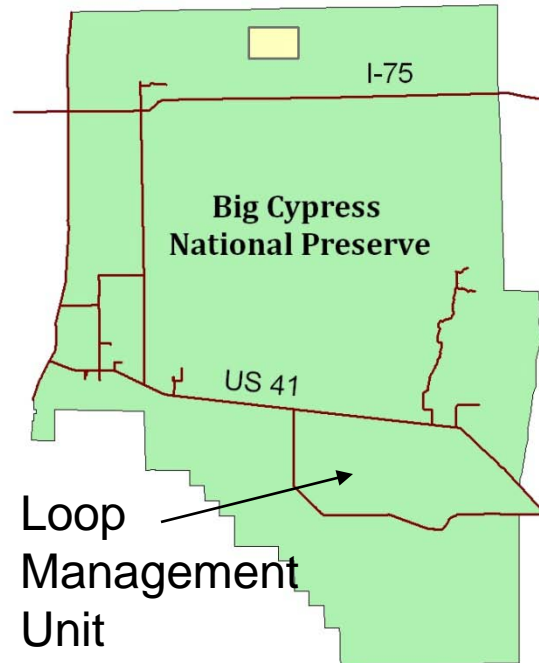
Siting Map of South Florida
with major transportation routes

0 10 20 30 40 50 60 70 80 90 100 Miles



Loop Unit:

- no vehicles allowed
- heavily forested
- scattered melaleuca



Loop Management Unit



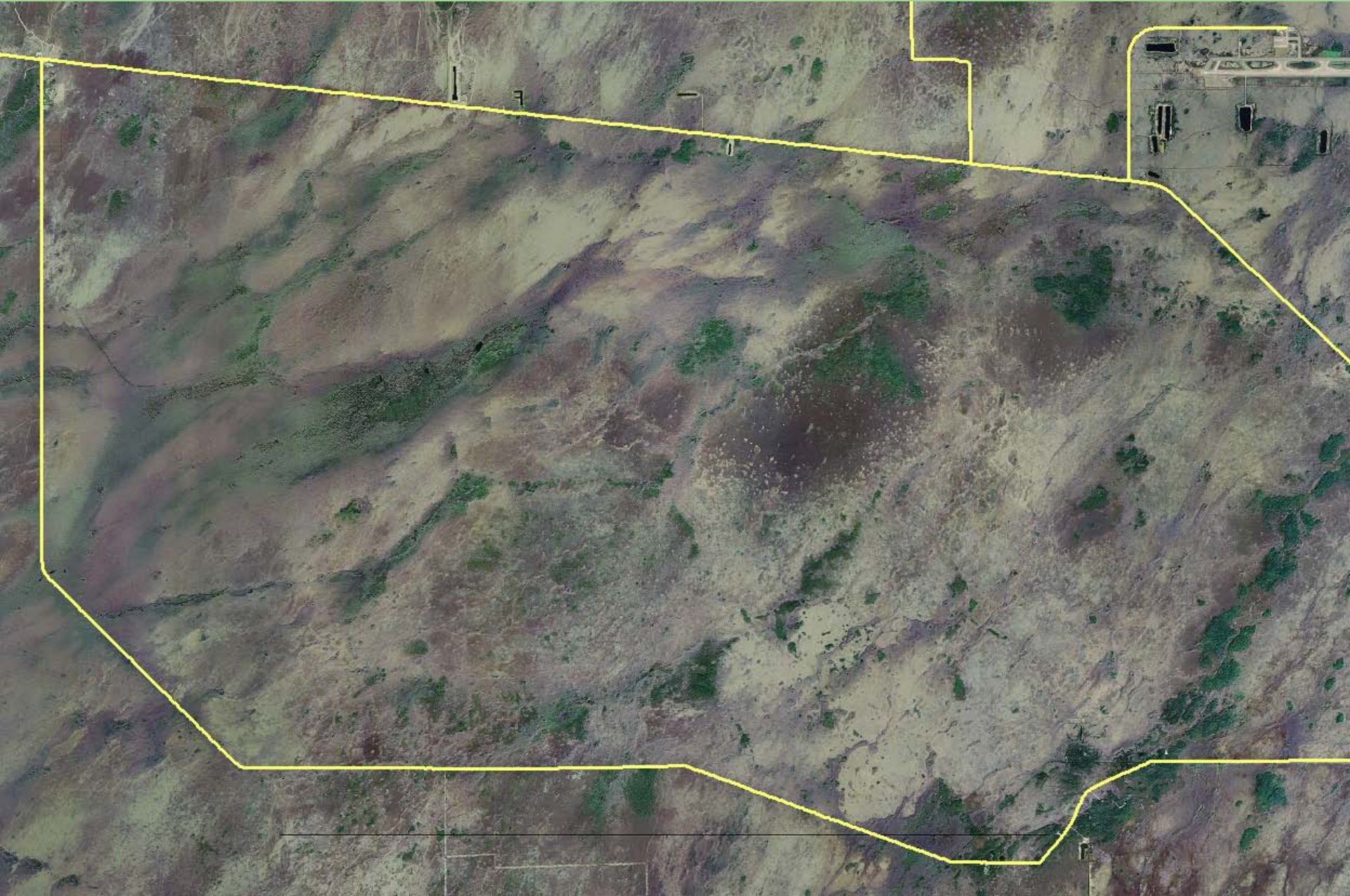


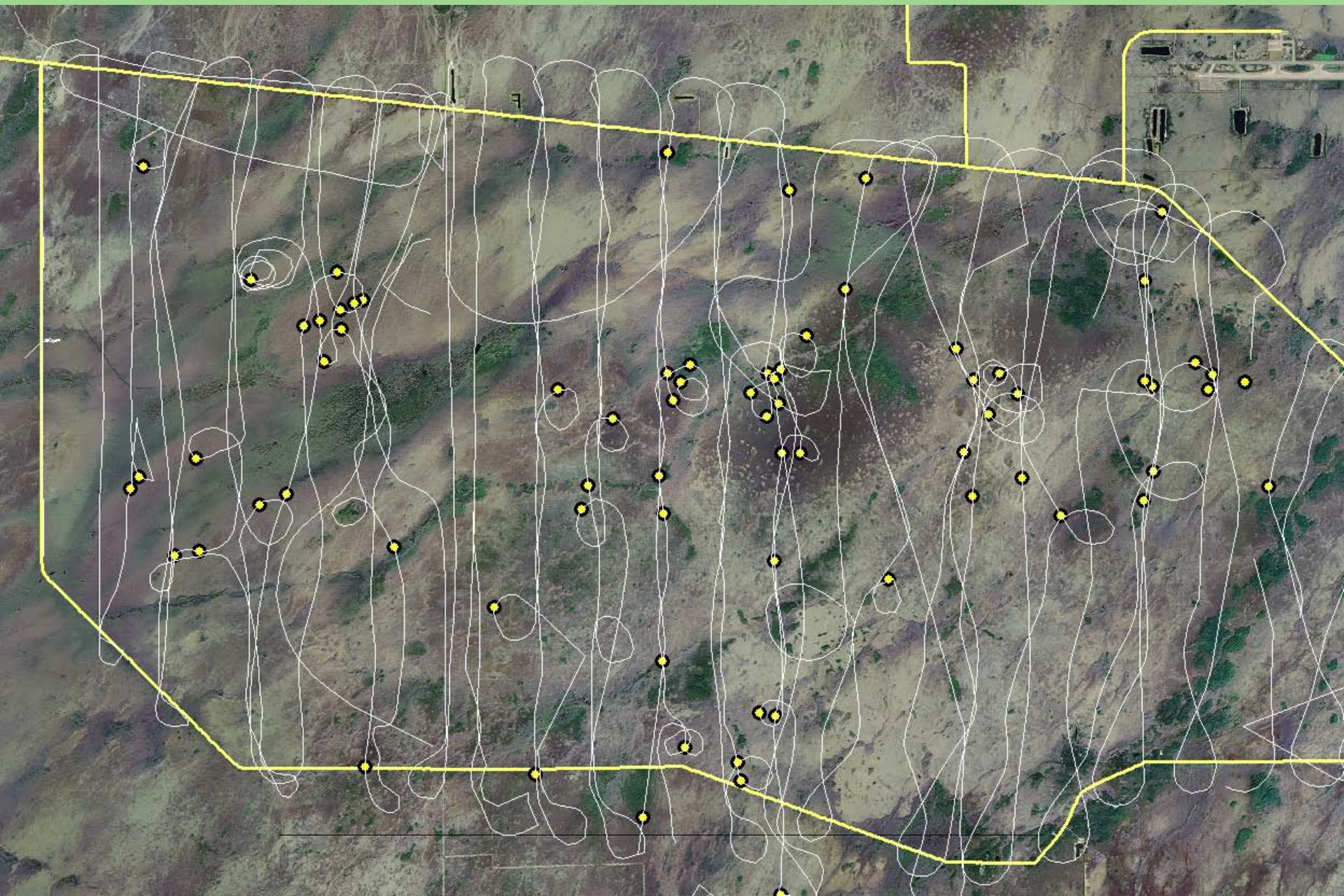
E. Raits Photo

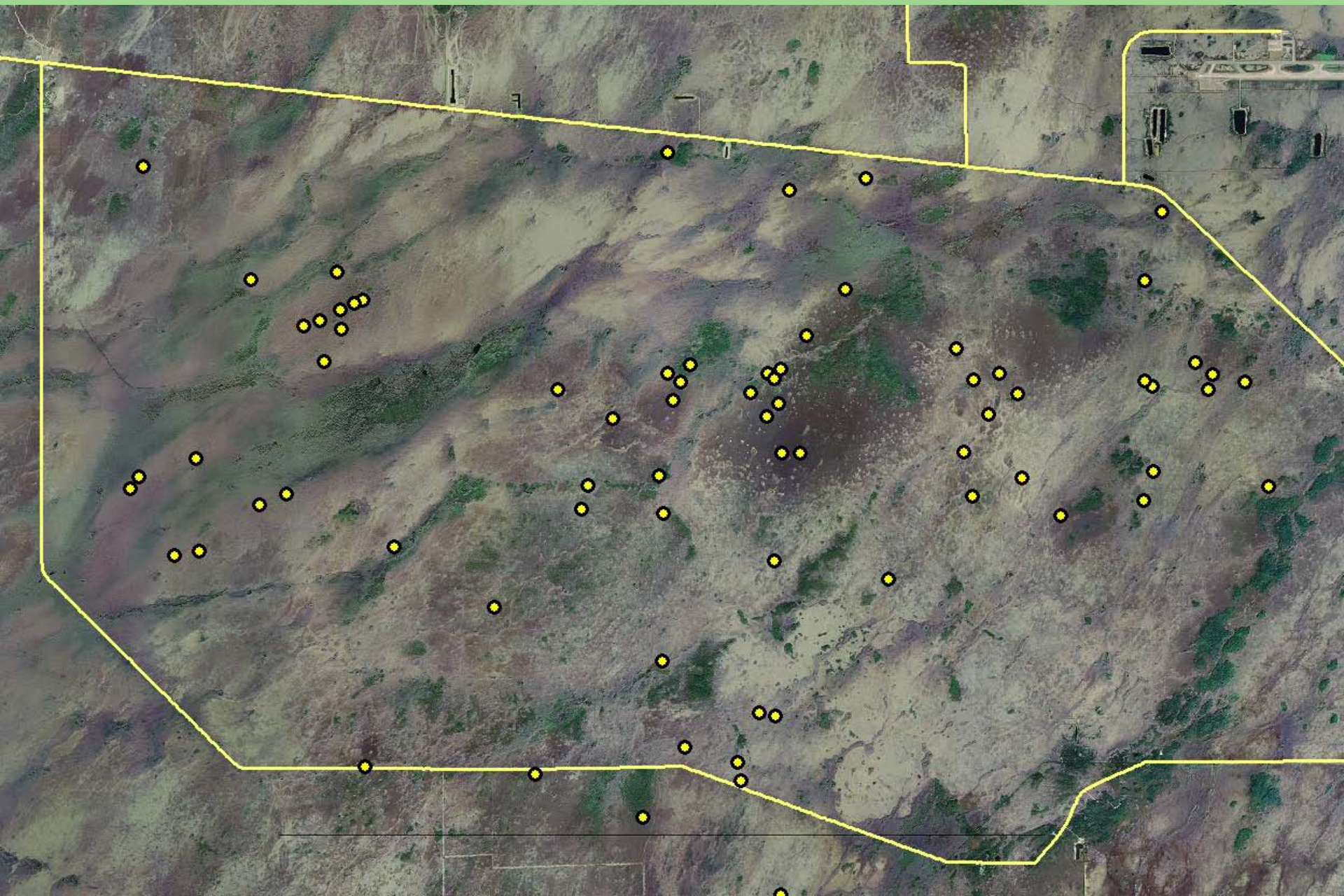


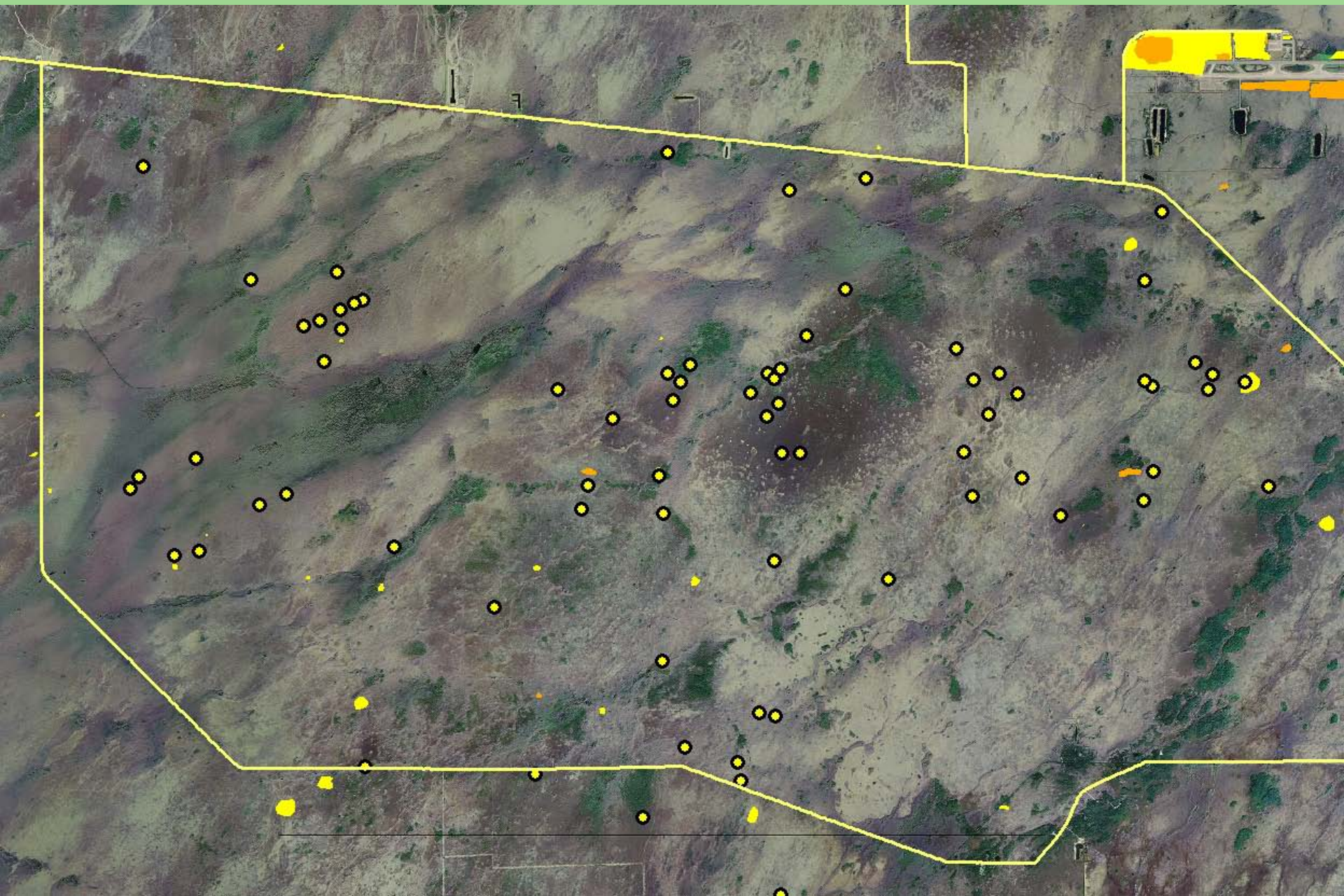


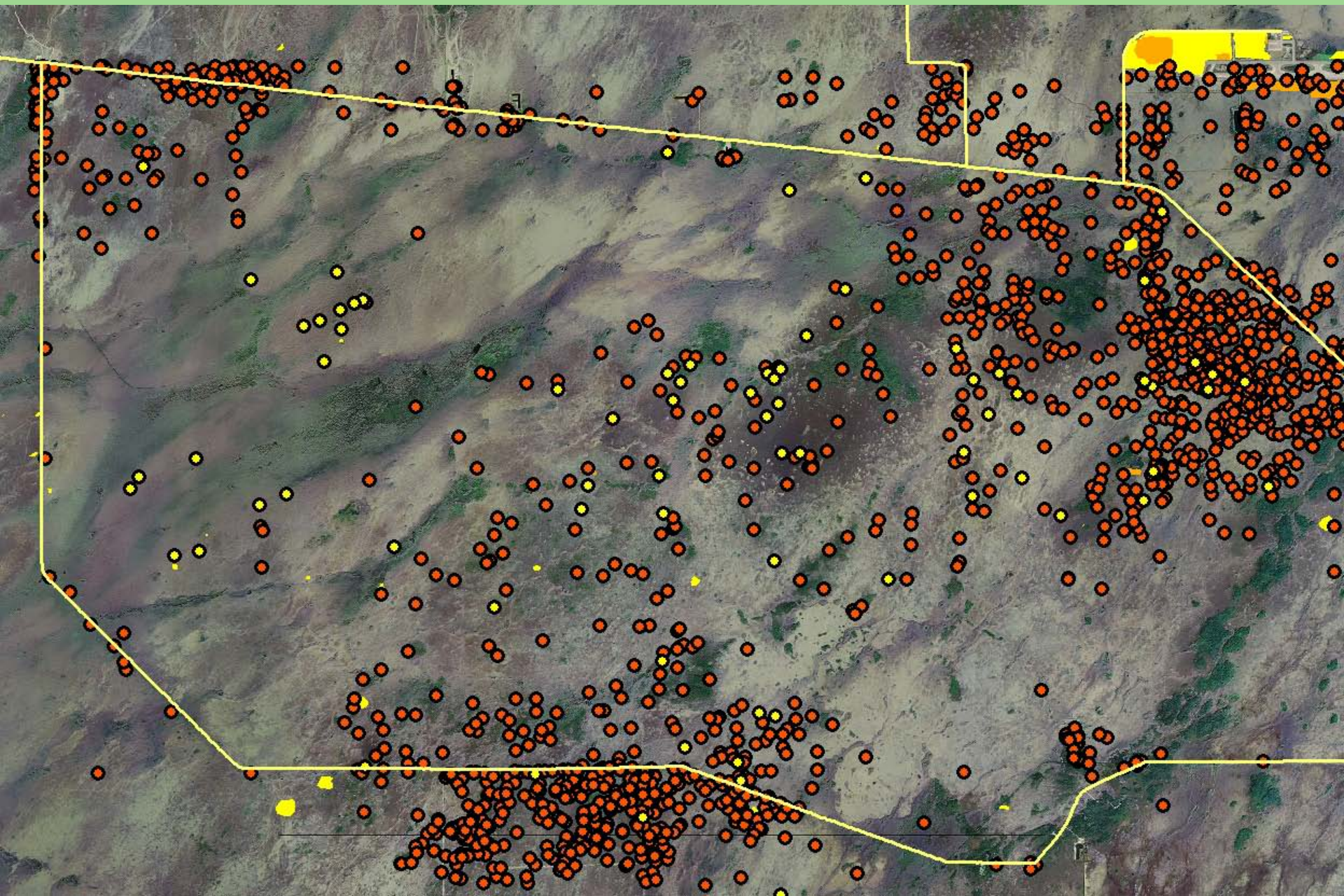


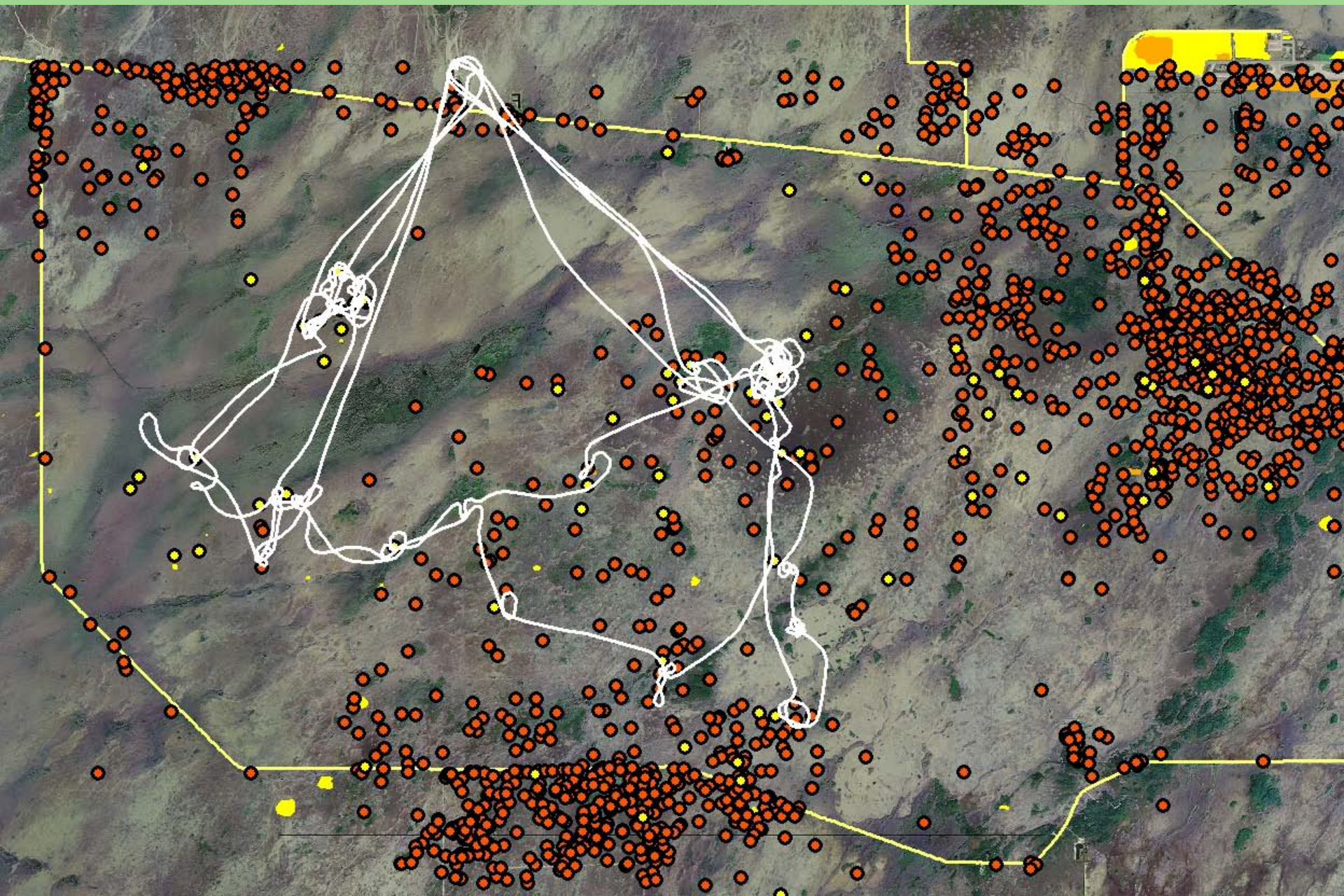


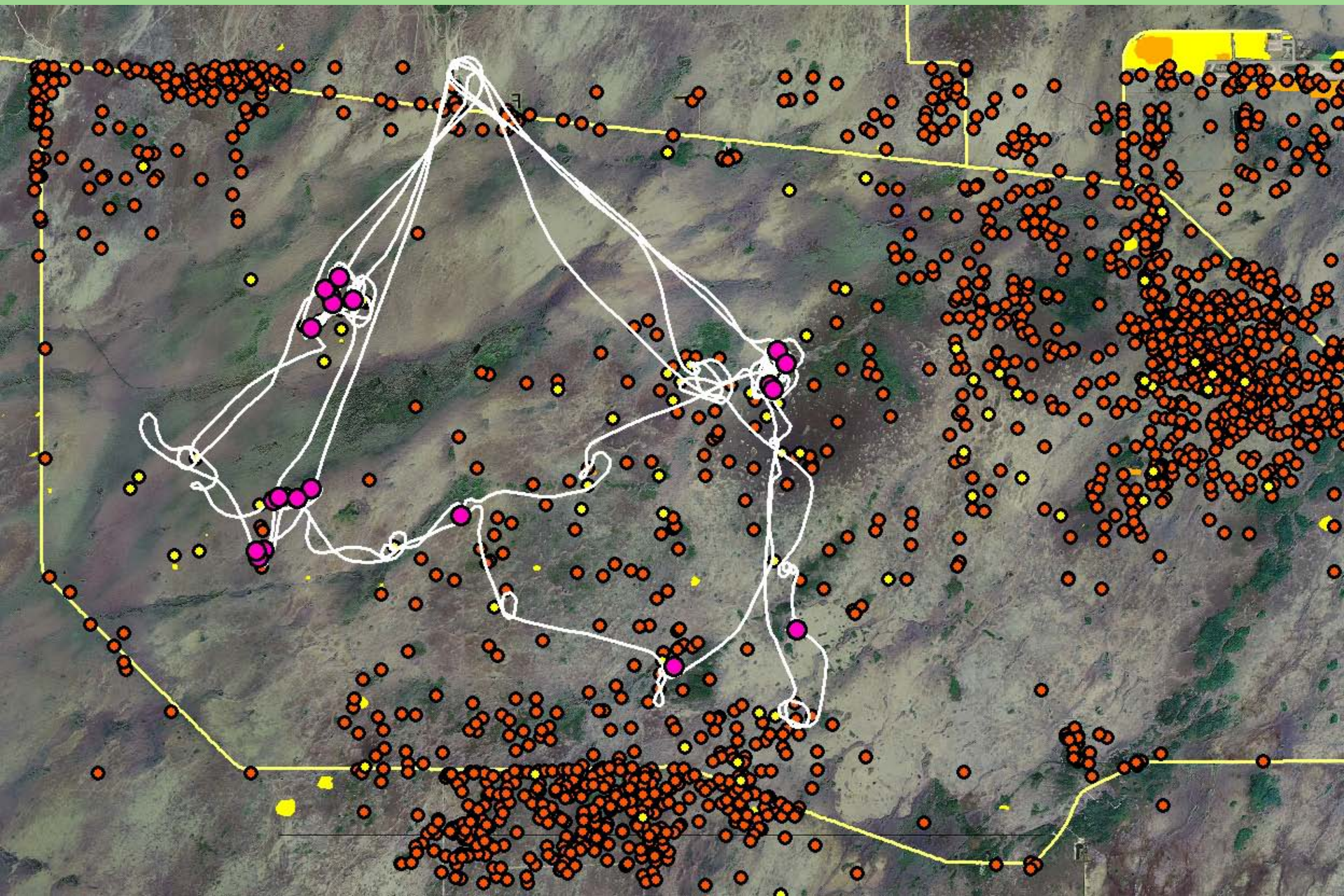


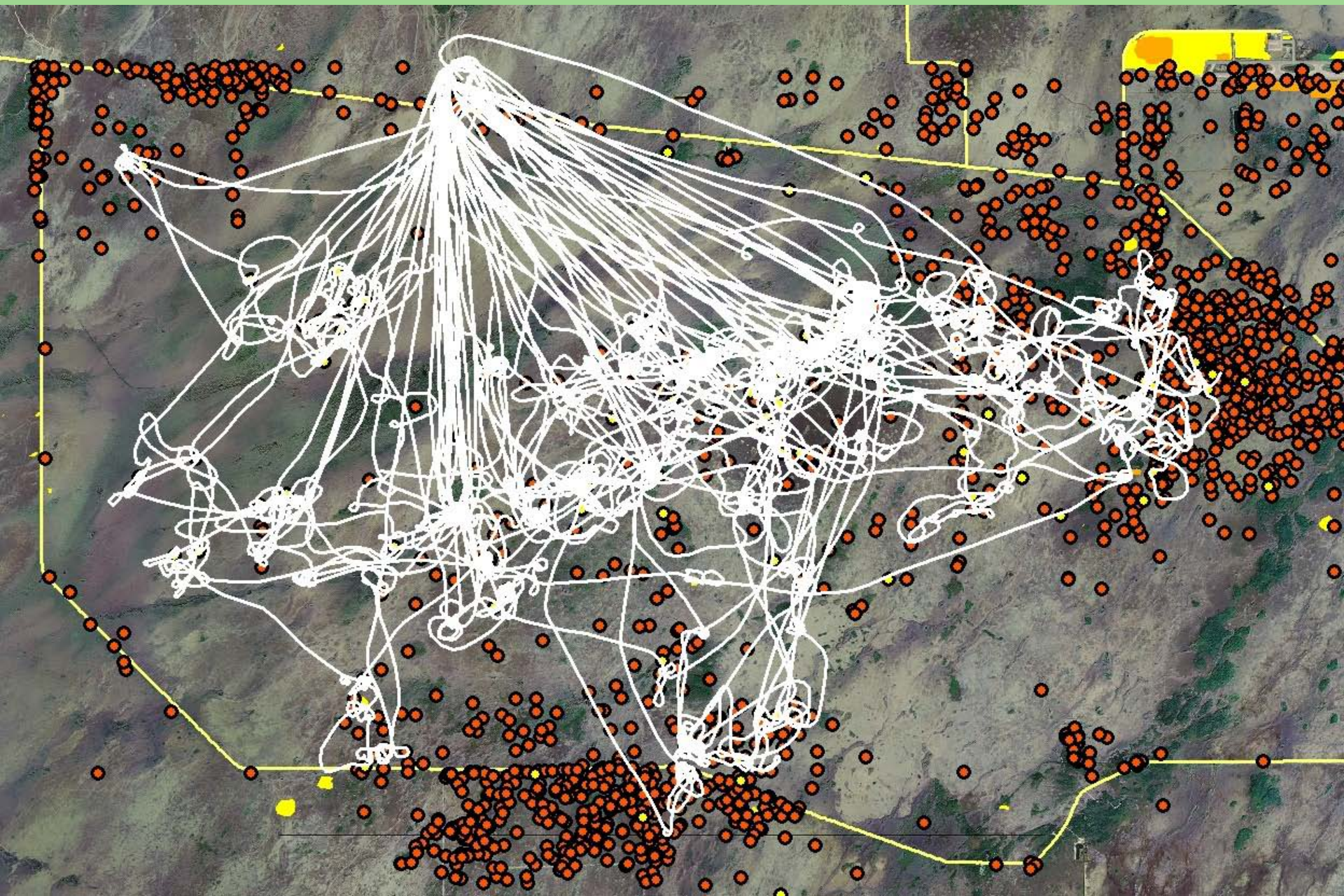


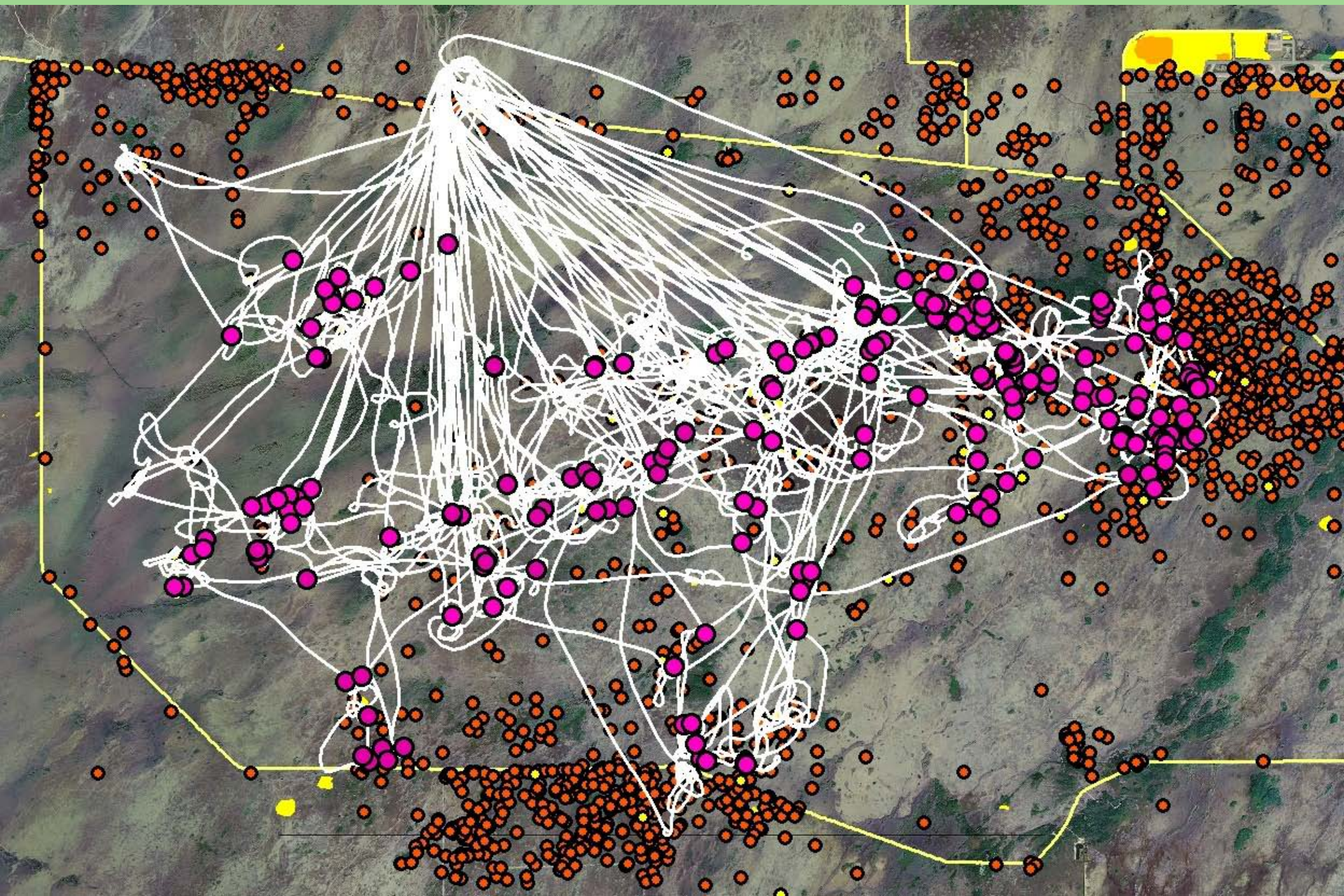


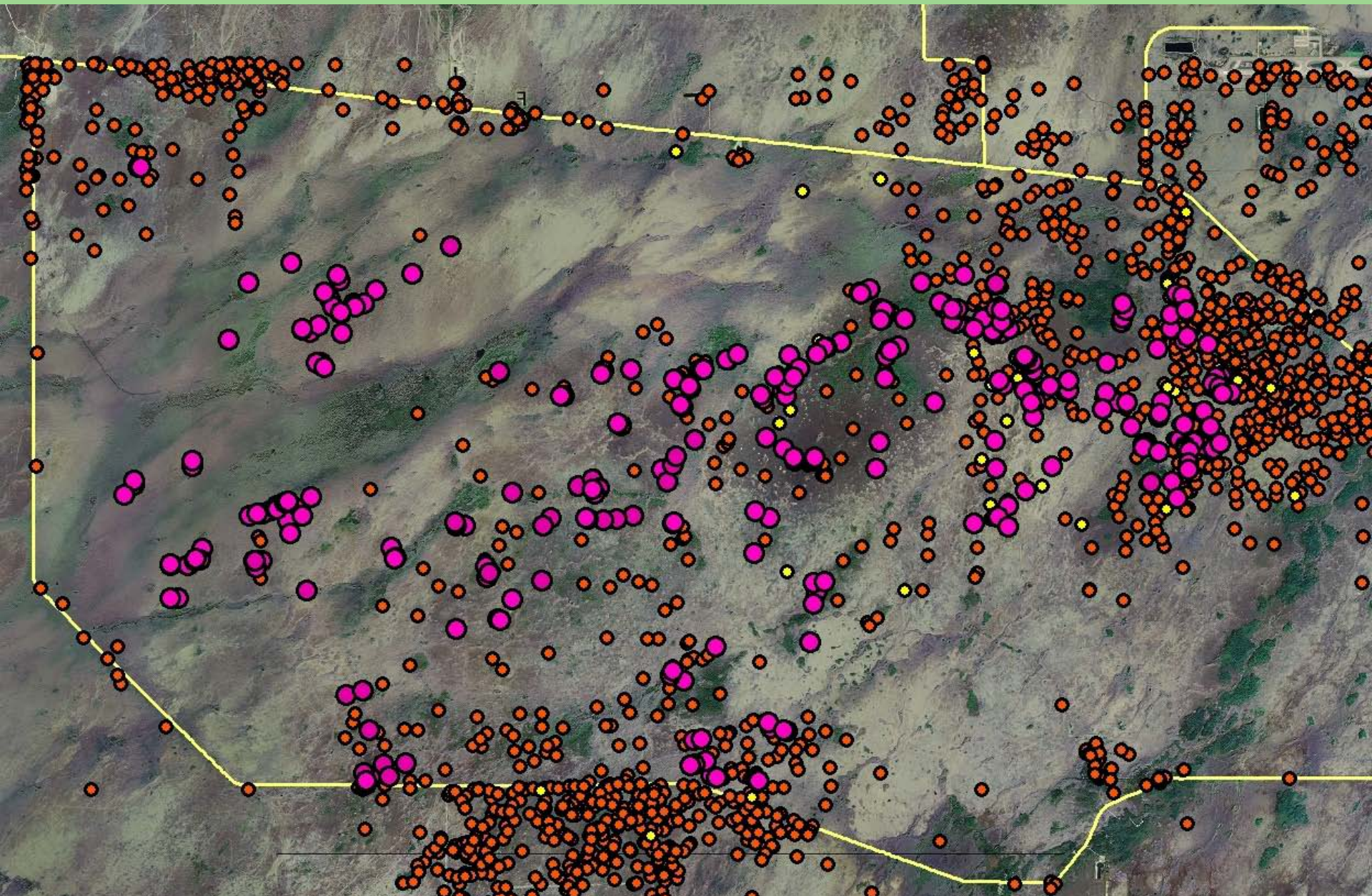


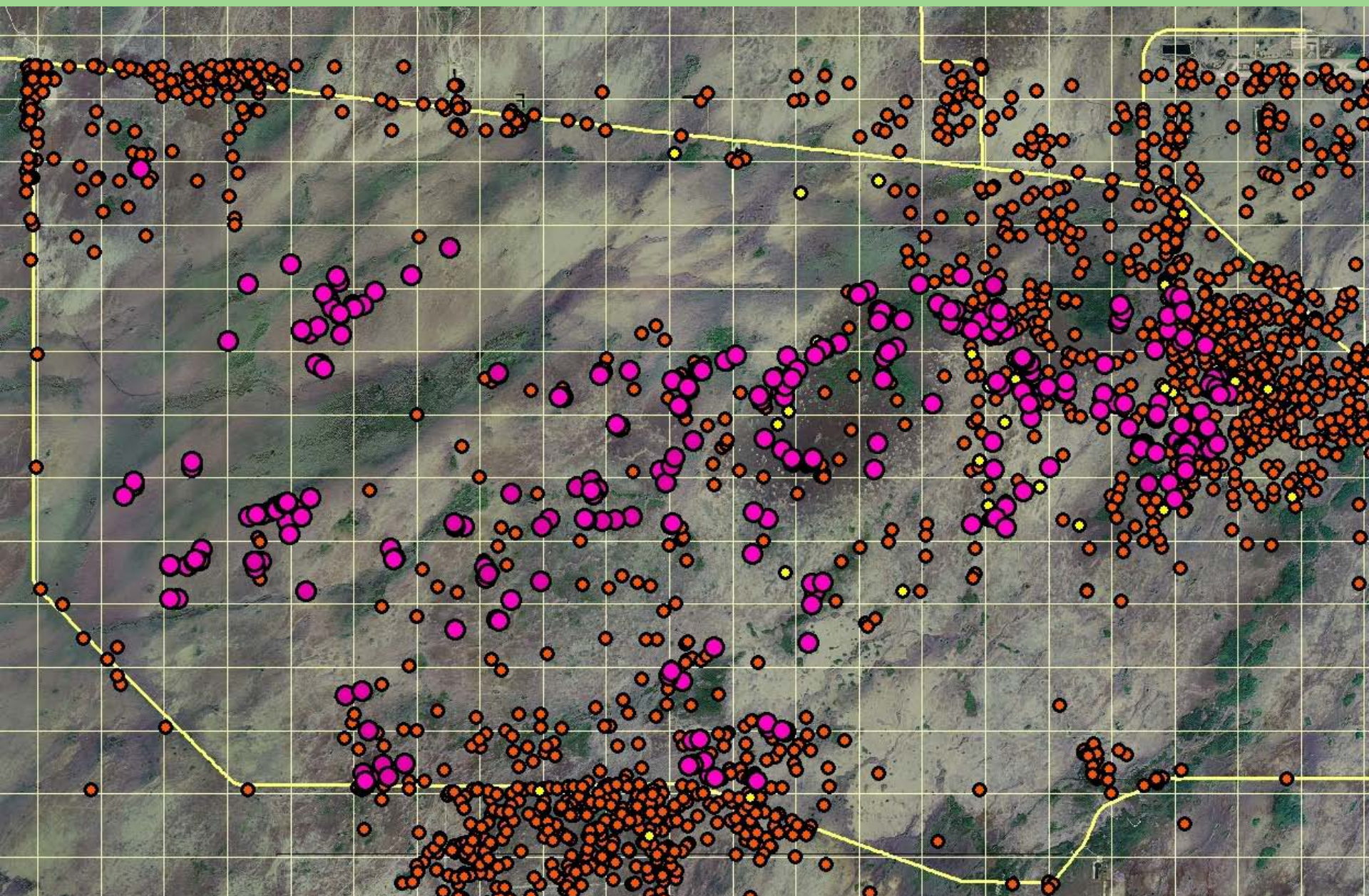






















E. Raits Photo





March 2009



June 2009





March 2009



June 2009



Disadvantages of Spot Spray Technique

- High cost per hour
- Some overspray
- NPS personnel can not be on board
- Small targets easy to miss

Advantages of Spot Spray Technique

- Access to remote, difficult areas, or restricted areas
- Rapid deployment
- Large areas contained

