

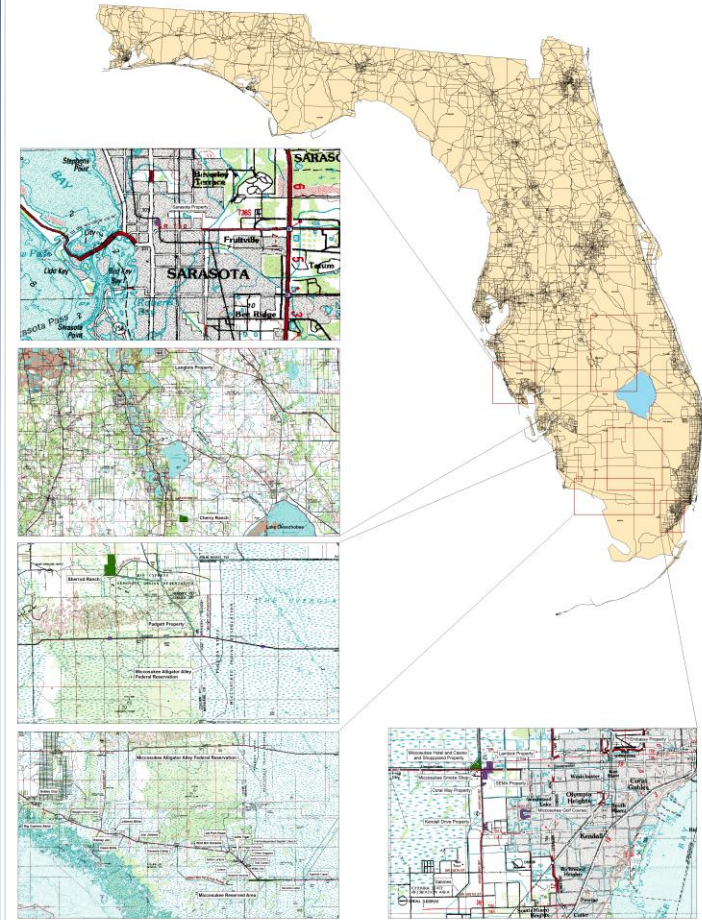
Miccosukee Tribe of Indians



Steve Terry, Land Resources Manager
Rory Feeney, Fish and Wildlife Director



2010 Everglades Invasive Species Summit



Micosukee Tribe of Indians of Florida Central and South Florida Lands & Indian Villages



Micosukee Tribal Trust Lands

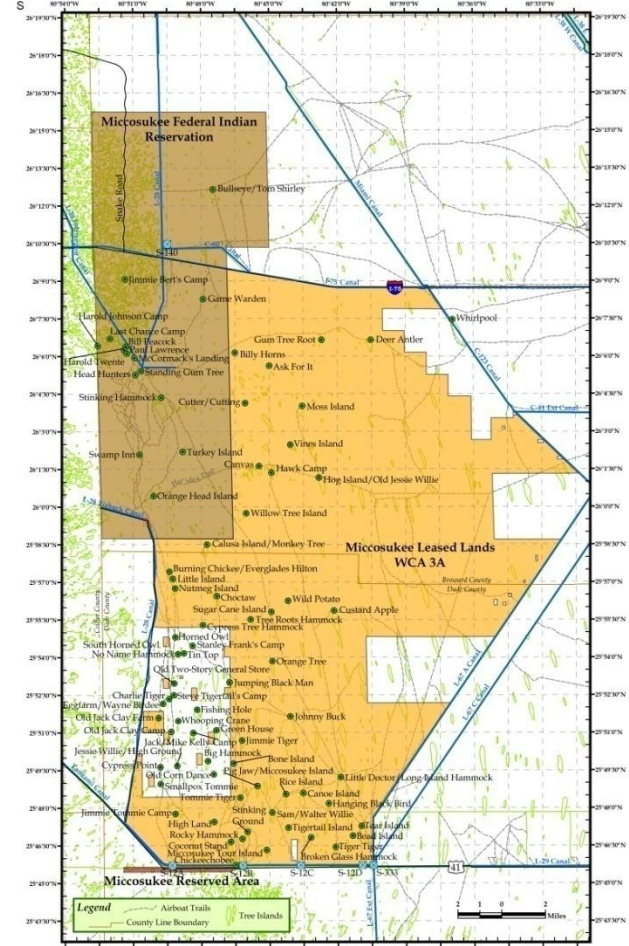


Micosukee Tribal Fee Lands

Map produced by Micosukee Real Estate Services, September 2008



Micosukee Tribe of Indians Tree Islands and Hammocks



Map produced by the Micosukee Tribe Water Resources Department, revised October 2008

EVERGLADES CISMA

Priority Plant Species

- **Priority Plants**

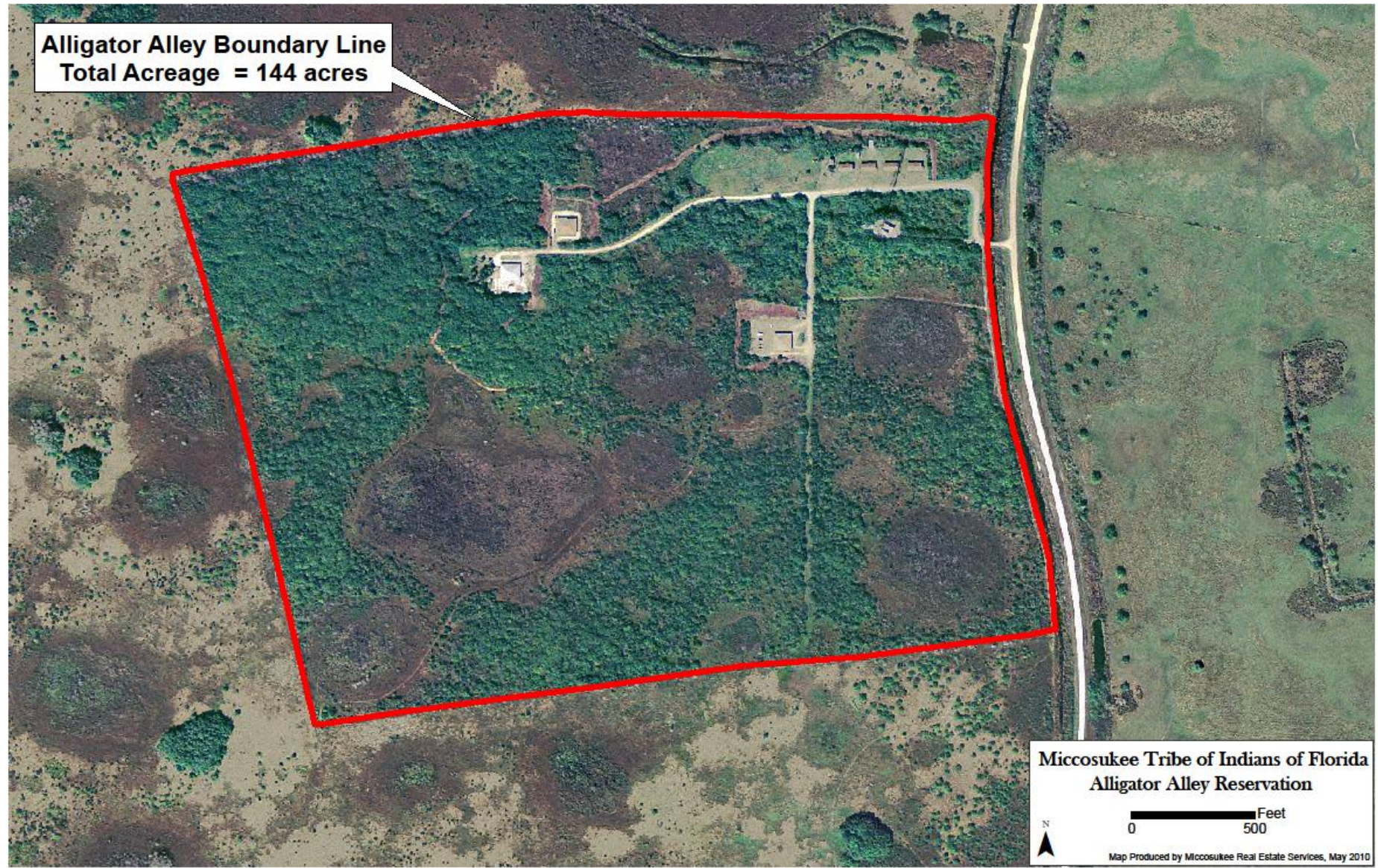
- Brazilian pepper
- Melaleuca
- Old World Climbing Fern



- **Newly Detected Plant Species**

- No significant detections

Alligator Alley Boundary Line
Total Acreage = 144 acres



Miccosukee Tribe of Indians of Florida
Alligator Alley Reservation

N

0 500 Feet

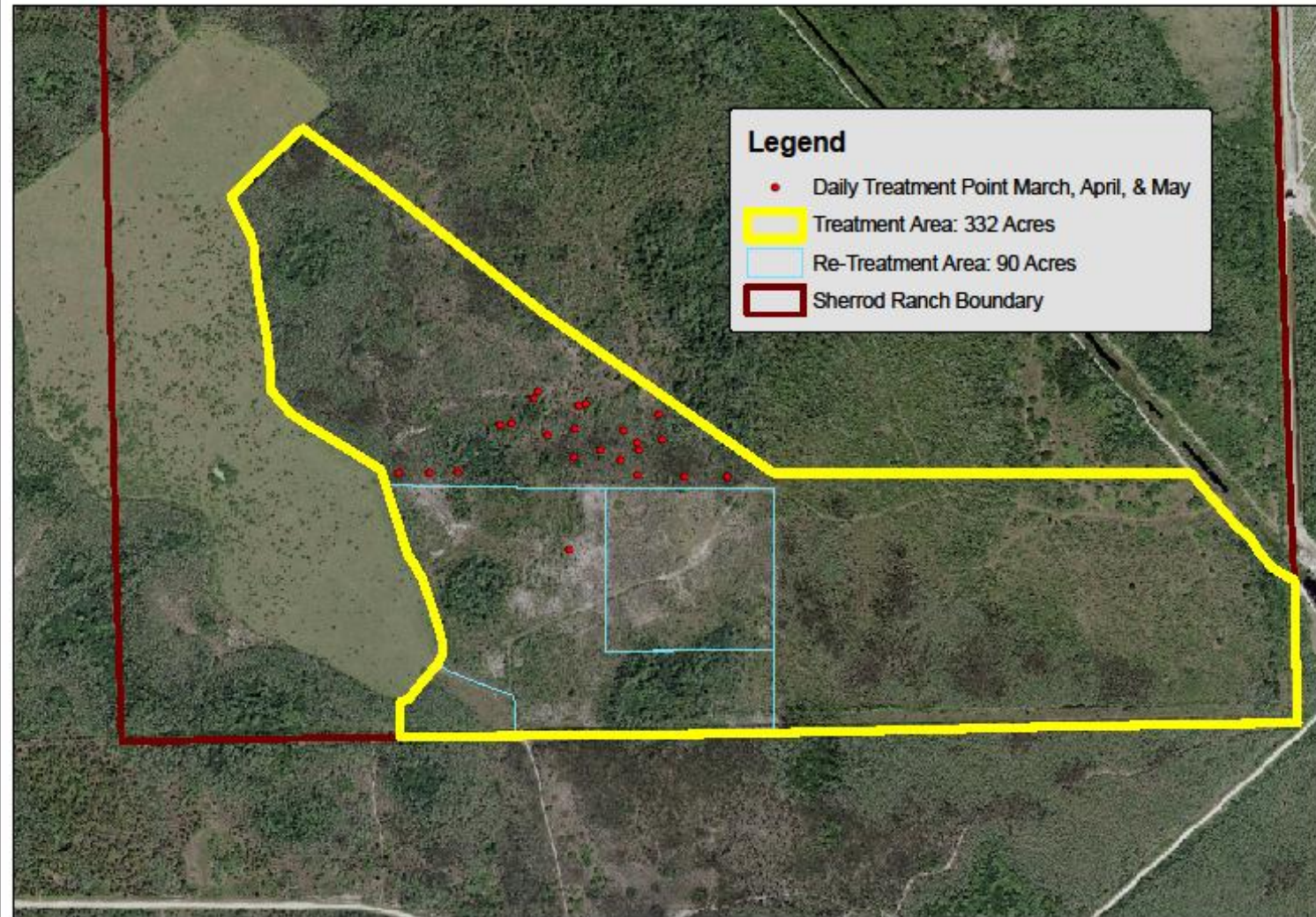
Map Produced by Miccosukee Real Estate Services, May 2010

2010 Everglades Invasive Species Summit



EVERGLADES CISMA

2010 Everglades Invasive Species Summit



Legend

- Daily Treatment Point March, April, & May
- Treatment Area: 332 Acres
- Re-Treatment Area: 90 Acres
- Sherrod Ranch Boundary

Melaleuca Mitigation Site
Sherrod Ranch: Hendry County, Florida



MICCOSUKEE TRIBE OF INDIANS OF FLORIDA
REAL ESTATE SERVICES DEPARTMENT
PO Box 440021 Miami, Florida 33144
Phone: (305) 223-8380 Ext 2246 Fax: (305) 223-8380



Map produced by REAL ESTATE SERVICES July 2010, MICCOSUKEE TRIBE OF INDIANS OF FLORIDA PROJECT/SHERROD RANCH

2010 Everglades Invasive Species Summit



EVERGLADES CISMA

2010 Everglades Invasive Species Summit



EVERGLADES CISMA

2010 Everglades Invasive Species Summit



EVERGLADES CISMA

2010 Everglades Invasive Species Summit



EVERGLADES CISMA

2010 Everglades Invasive Species Summit



EVERGLADES CISMA

Mechanical Removal of Melaleuca at Miccosukee Resort and Casino

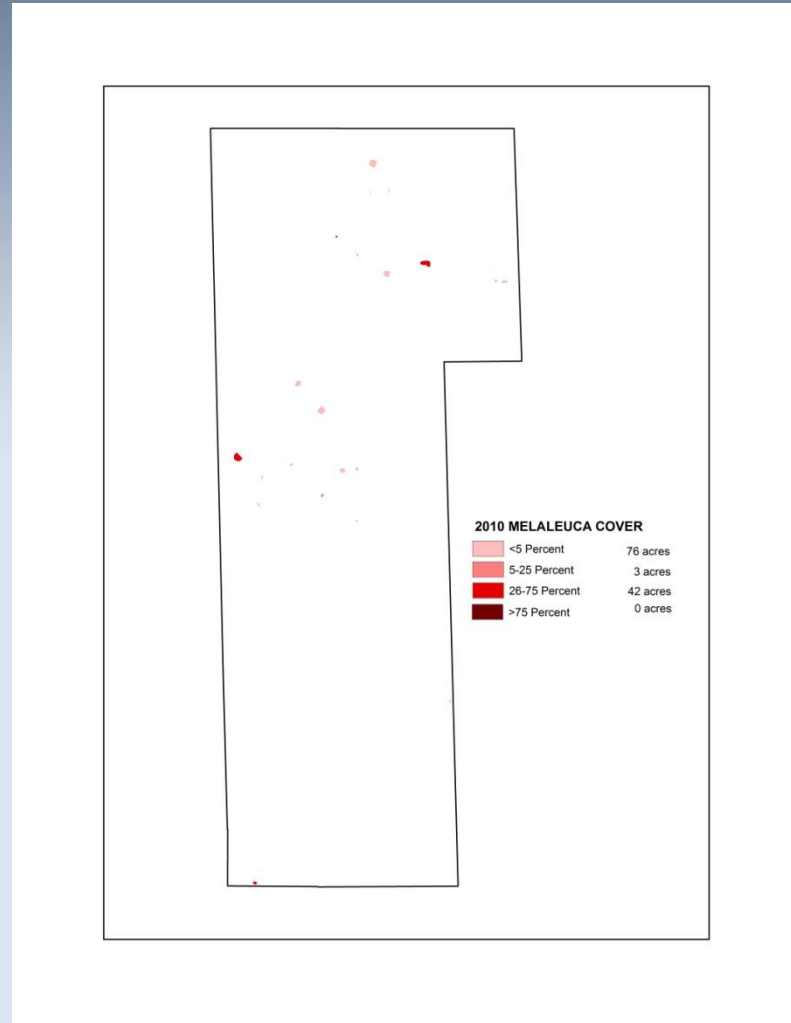
- **Objective**
 - To remove the thick melaleuca from the property so that the surrounding wetlands can be restored.
- **Partners**
- **Start/End Dates**
 - Summer 2006 - ongoing
- **Status**
 - Ongoing dependent upon the how wet the area is and the muck.
- **Funding (FY): Tribally Funded**
- **Annual Summary**
 - Almost all of the 179 acres that make up the back portion of the Resort Property, and approximately 150 acres on fee property adjacent to the Resort.

2010 Everglades Invasive Species Summit



EVERGLADES CISMA

Digital Aerial Sketch Mapping

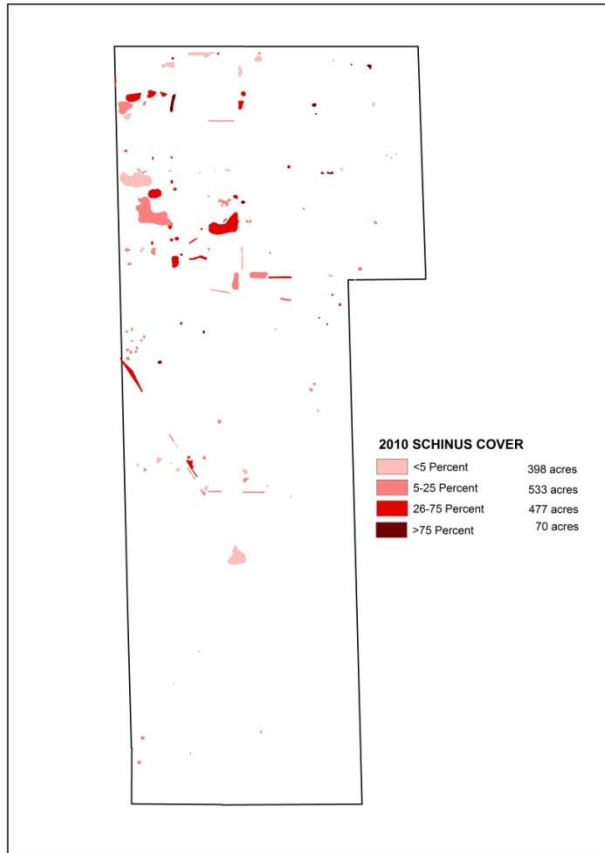


Miccosukee Reservation

Melaleuca

<u>Coverage Class</u>	<u>Acres</u>
High	0
Medium	42
Low	3
<5%	76
Total	121

Digital Aerial Sketch Mapping

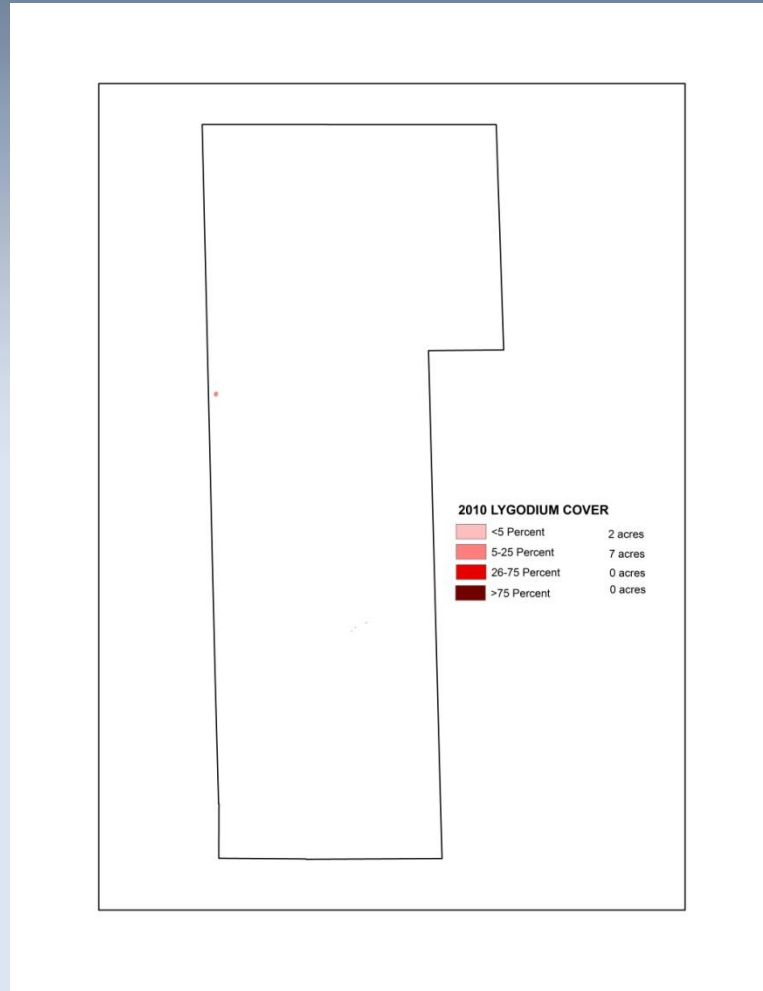


Miccosukee Reservation

Brazilian Pepper

Coverage Class	Acres
High	70
Medium	477
Low	533
<5%	398
Total	1478

Digital Aerial Sketch Mapping

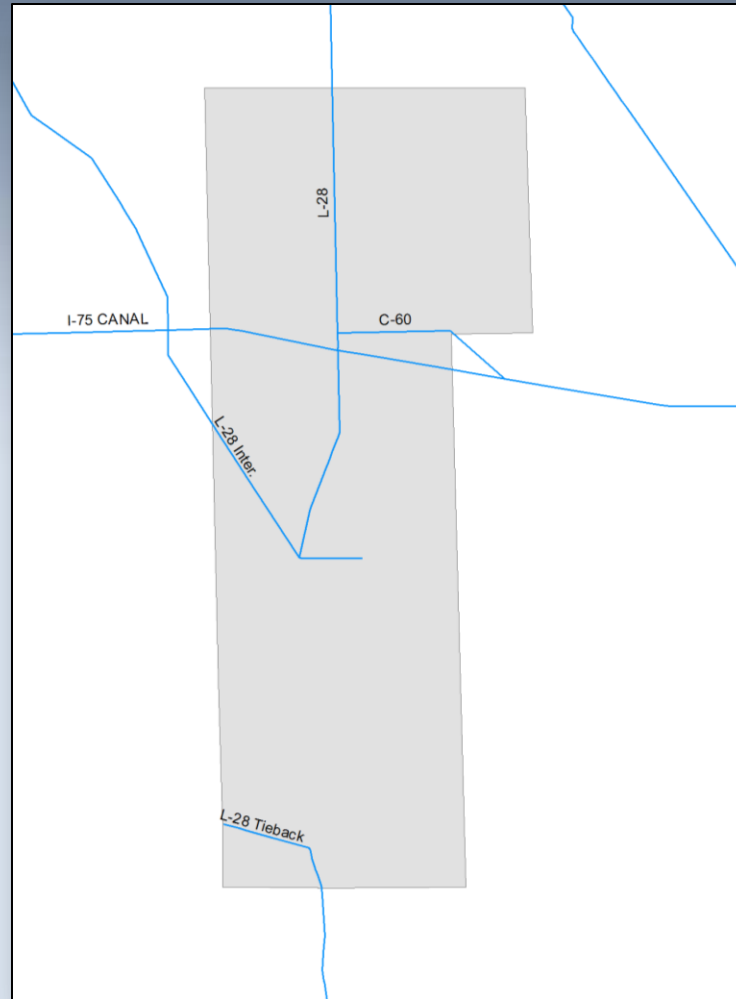


Miccosukee Reservation

Old World Climbing Fern

Coverage Class	Acres
High	0
Medium	0
Low	7
<5%	2
Total	9

Planned Treatments



Priority Animal Species

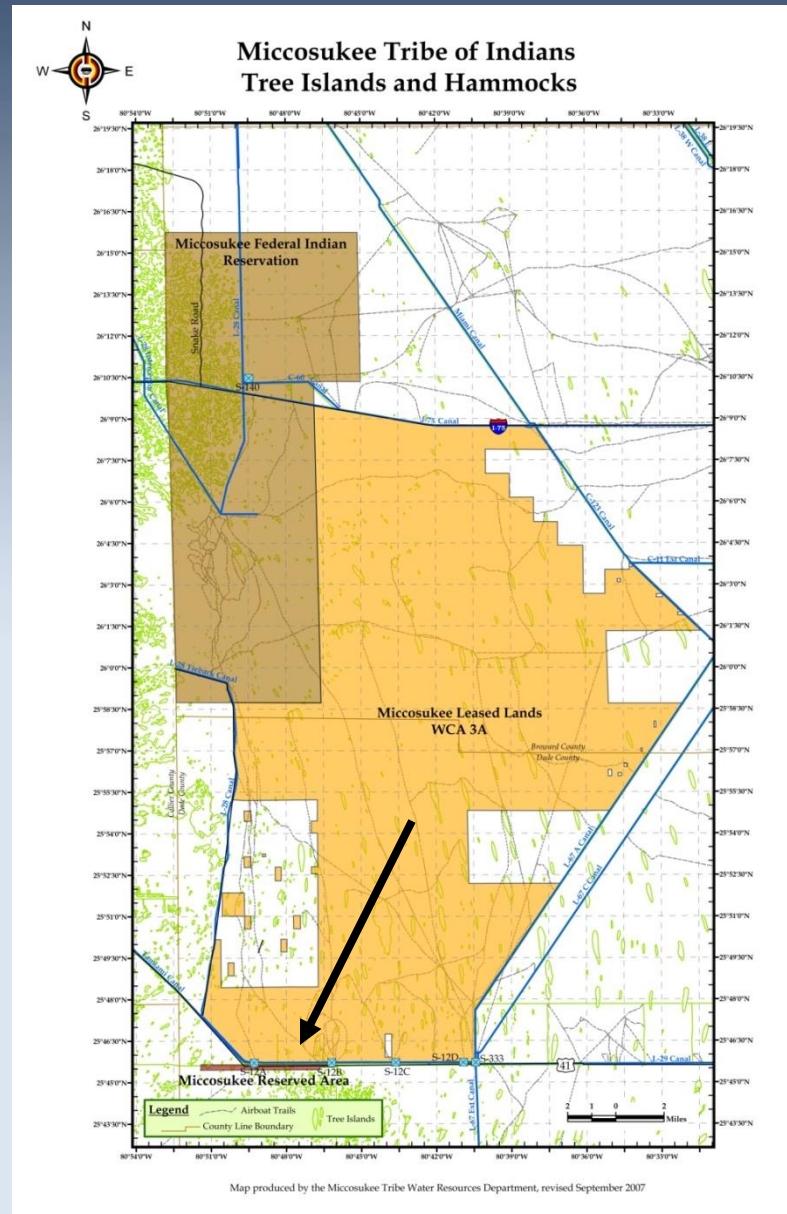
- **Priority Animals**
 - Burmese/African Rock Pythons, exotic Apple Snails, Asian walking catfish, and Cichlid sp.
- **Newly Detected Animal Species**
 - Plecos



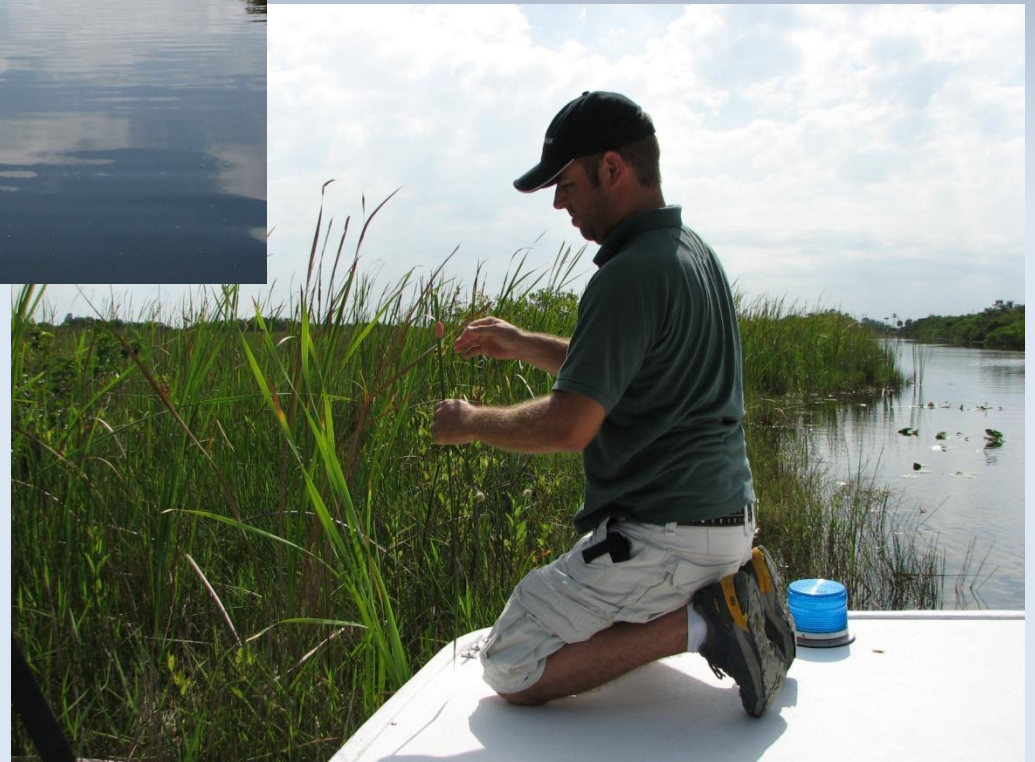
Invasive Species Programs

- GIS Mapping and removal of Island Apple Snail (*Pomacea insularum*)
- **Description**
 - The Island applesnail (*P. insularum*) was identified, marked with GPS and and then physically removed and destroyed. The area of interest was the L-29 Canal between the S-12A and S-12B structures.
- **Objective**
 - To gage the distribution of *P. insularum* and determine what type of studies are required within WCA3A.
- **Partners**
 - SFWMD and ENP
- **Start/End Dates**
 - July 2008 - ongoing
- **Status**
 - ~70 egg clusters mapped and removed. *P. insularum* has been observed in WCA3A.
- **Funding:** n/a
- **Annual Summary**
 - The extreme cold weather in February/March may have played a role in the low observed numbers. Possible affect on reproduction or shift in season. Additional surveys will be conducted in the coming months.

2010 Everglades Invasive Species Summit

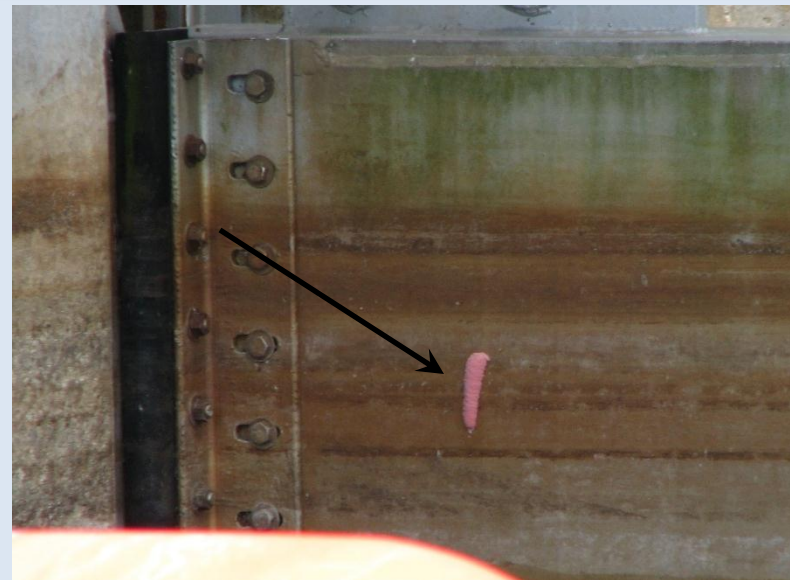


2010 Everglades Invasive Species Summit



EVERGLADES CISMA

2010 Everglades Invasive Species Summit



EVERGLADES CISMA

2010 Everglades Invasive Species Summit



EVERGLADES CISMA

2010 Everglades Invasive Species Summit



EVERGLADES CISMA

2010 Everglades Invasive Species Summit



**Exotic Apple Snail Egg Cluster Locations
June 2010**



Map produced by the Miccosukee Fish and Wildlife Department 2010

② *Pomacea insularum*

0 0.1 0.2 0.4 0.6 0.8 Miles

Invasive Species Programs

- Exotic python reporting and public outreach program
- **Description**
 - The Burmese python (*Python molurus bivittatus*) population has become a wide spread problem in south Florida; particularly near the Miccosukee Reservation. The Tribal community and department staff have been responding to live python reports and road kills along US41, Krome Ave and Water Conservation Area 3A South.
- **Objective**
 - To gauge the occurrence and distribution of Burmese pythons, suppress the expanding population, and provide community education/awareness.
- **Partners**
 - FWC, SFWMD and ENP
- **Start/End Dates**
 - 2007 - ongoing
- **Status**
 - 12 pythons reported during the past 6 months. Probably only a fraction of actual sightings. Several +12' pythons found along the L-28 tieback levee. Most active during Spring morning hours. African rock pythons found in the Bird Drive Basin.
- **Funding:** n/a
- **Annual Summary**
 - Road kill reports have been reduced and the overall number of observations have decreased.
 - Several large pythons were found dead in WCA3A of apparent cold stress.

2010 Everglades Invasive Species Summit



EVERGLADES CISMA

2010 Everglades Invasive Species Summit



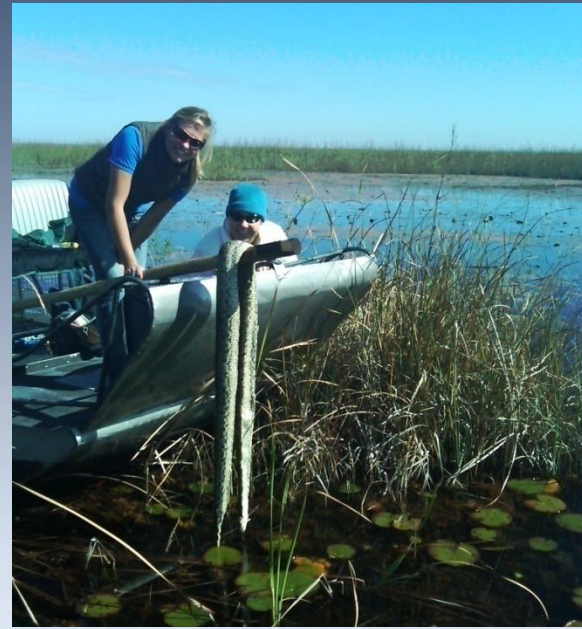
EVERGLADES CISMA

2010 Everglades Invasive Species Summit



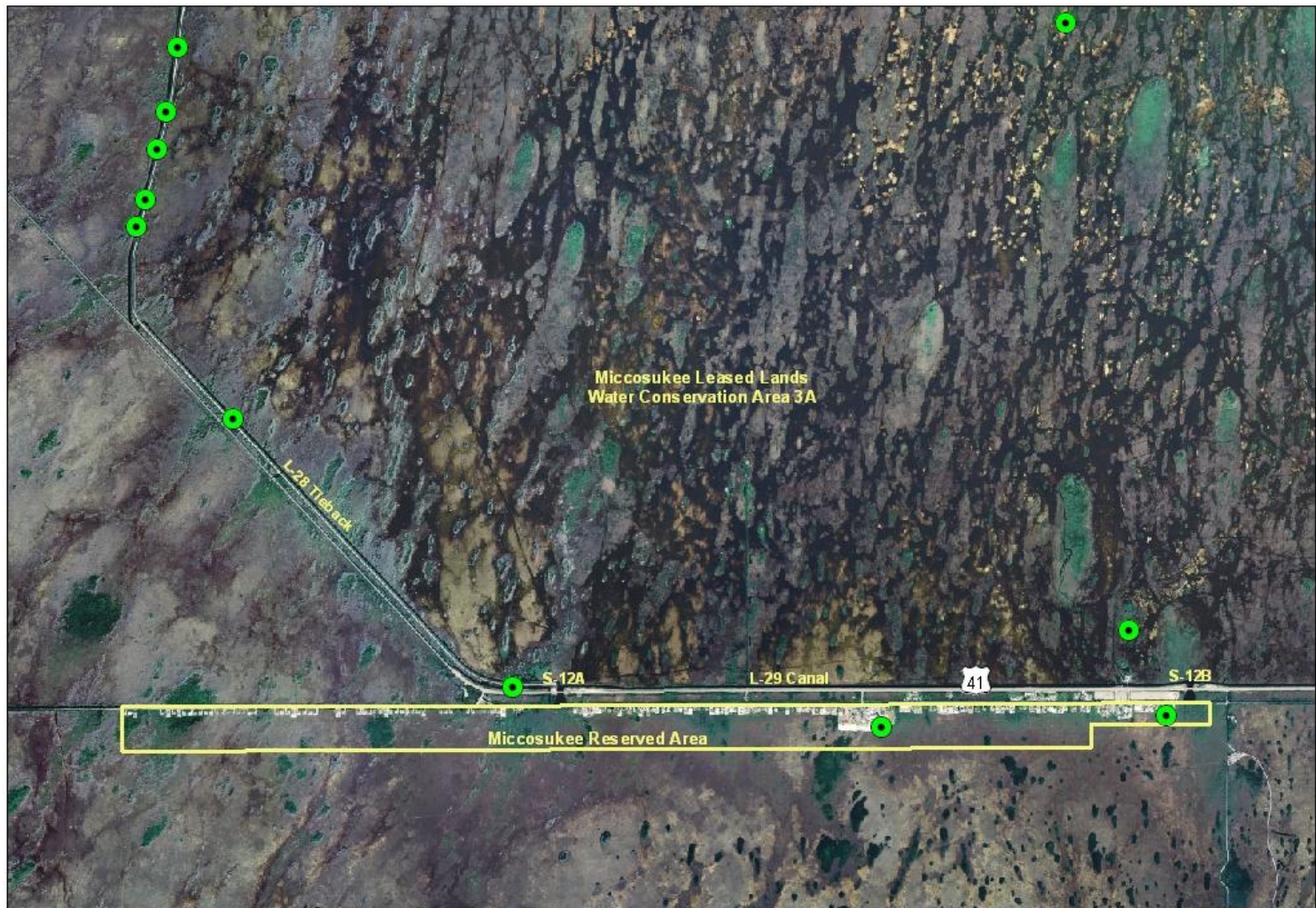
EVERGLADES CISMA

2010 Everglades Invasive Species Summit



EVERGLADES CISMA


2010 Everglades Invasive Species Summit

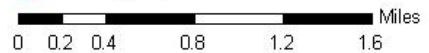


**Burmese Python sightings
January - June 2010**



Map produced by the Miccosukee Fish and Wildlife Department 2010

 Python sighting



EVERGLADES CISMA

Invasive Species Programs

- Viabile Fisheries Resources for the Miccosukee Tribe
- **Description**
 - Methyl mercury bioaccumulation has become an increasing problem in the fresh water ecosystem of South Florida. The Hg in the native fish and the presence of exotic species have impacted the Miccosukee traditional way of subsistence fishing.
- **Objective**
 - The Miccosukee Tribe is attempting to develop a mercury safe fishery in the closed section of the Old Tamiami Canal that is sustainable for recreational, subsistence and cultural use by Tribal members.
- **Partners**
 - Nicholls State University
- **Start/End Dates**
 - 2006 - ongoing
- **Status**
 - Exotic fish (i.e. oscar, catfish and african cichlids) were found dead throughout the L-29, L-28, and Old Tamiami Canal systems due to cold shock. Native fish impacted as well (bass, snook).
 - Since last year Florida native fish have been restocked in the Old Tamiami Canal including: Red Ear, Blue Gill, Large Mouth Bass and Florida Gar. Additional mercury safe brim, bass, and gar will be phased in over the proceeding months.
- **Funding:** n/a
- **Annual Summary**
 - The Tribe is ready to proceed in the implementation of the Miccosukee Fishery Management Plan which is an indispensable tool to restore the fishery resource and preserve the social, subsistent and cultural values for the long term benefit of the Tribe.

2010 Everglades Invasive Species Summit



Exotic species found:

Mayan cichlids

Oscars

Tilapia

Grass Carp

Walking catfish

Plecostomus sp.

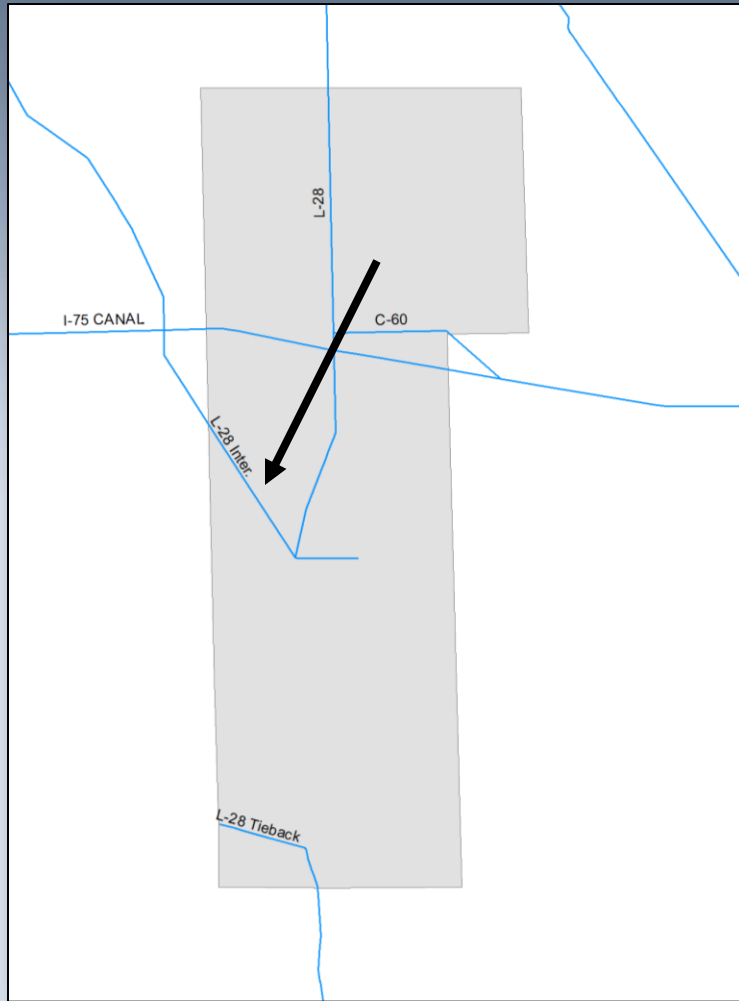


2010 Everglades Invasive Species Summit



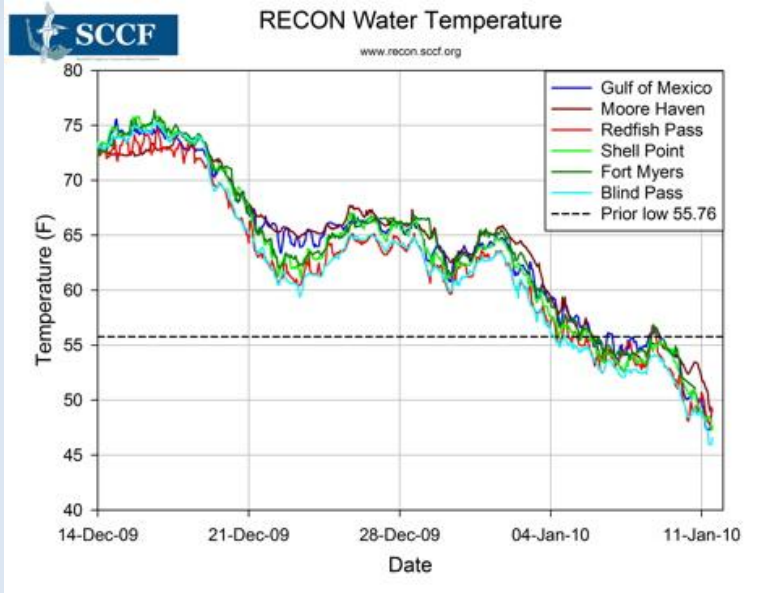
EVERGLADES CISMA

2010 Everglades Invasive Species Summit



EVERGLADES CISMA

2010 Everglades Invasive Species Summit



EVERGLADES CISMA

2010 Everglades Invasive Species Summit



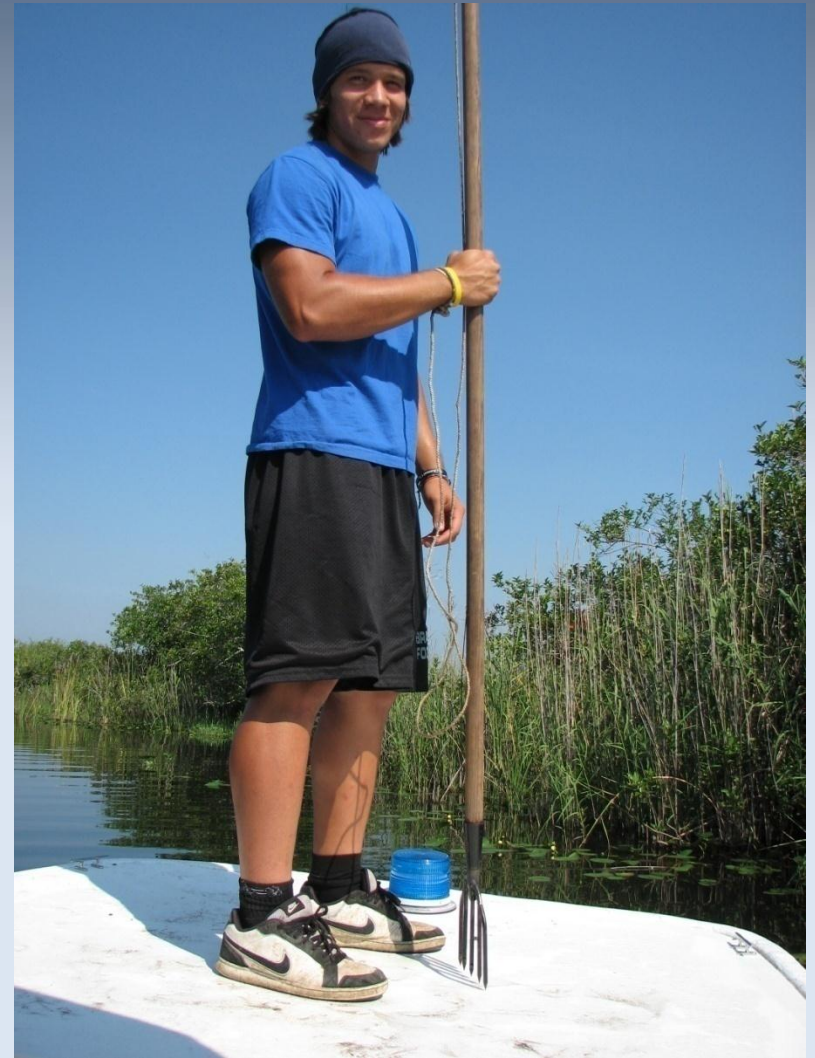
EVERGLADES CISMA

2010 Everglades Invasive Species Summit



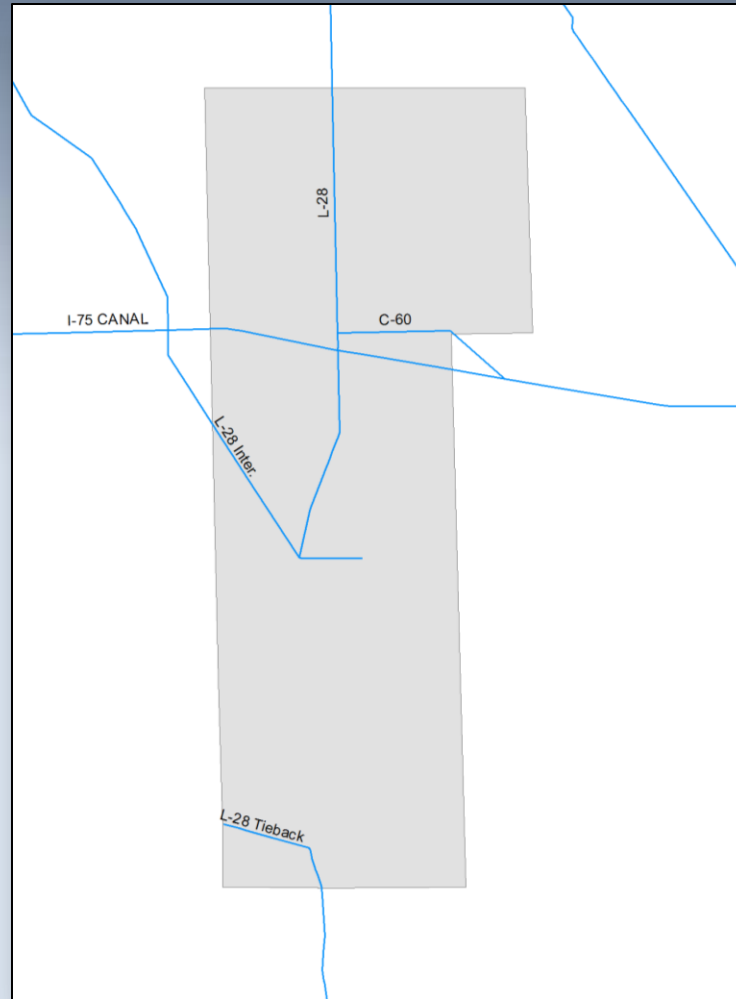
EVERGLADES CISMA

2010 Everglades Invasive Species Summit



EVERGLADES CISMA

Planned Treatments



NEEDS?



Questions?

- stevet@miccosukeetribe.com
- roryf@miccosukeetribe.com
- (305)223-8380
- PO Box 440021 Miami, FL 33144

