

Central & South Region Transmission Department

Aaron Neville and Greg Polidora
Florida Power & Light Company



Invasive Species Programs

FPL has historically managed transmission rights of ways such that vegetation species are maintained below 14', with an emphasis on eliminating exotic vegetation. Vegetation with a potential of interfering with the operation of the line(s), fuel levels are also taken into consideration. Some of the control methods utilized are herbicide application, mowing and rolling.

Priority Plant Species

- **Priority Plants**

- Melaleuca (*Melaleuca quinquenervia*)
- Australian Pine (*Casuarina* spp.)
- Brazilian Pepper (*Schinus terebinthifolius*)
- Earleaf Acacia (*Acacia auriculiformis*)
- Bishopwood (*Bischofia javanica*)
- Lead tree (*Leucaenea leucocephala*)
- Burma Reed (*Neyraudia reynaudiana*)
- Queensland Umbrella (*Schefflera actinophylla*)

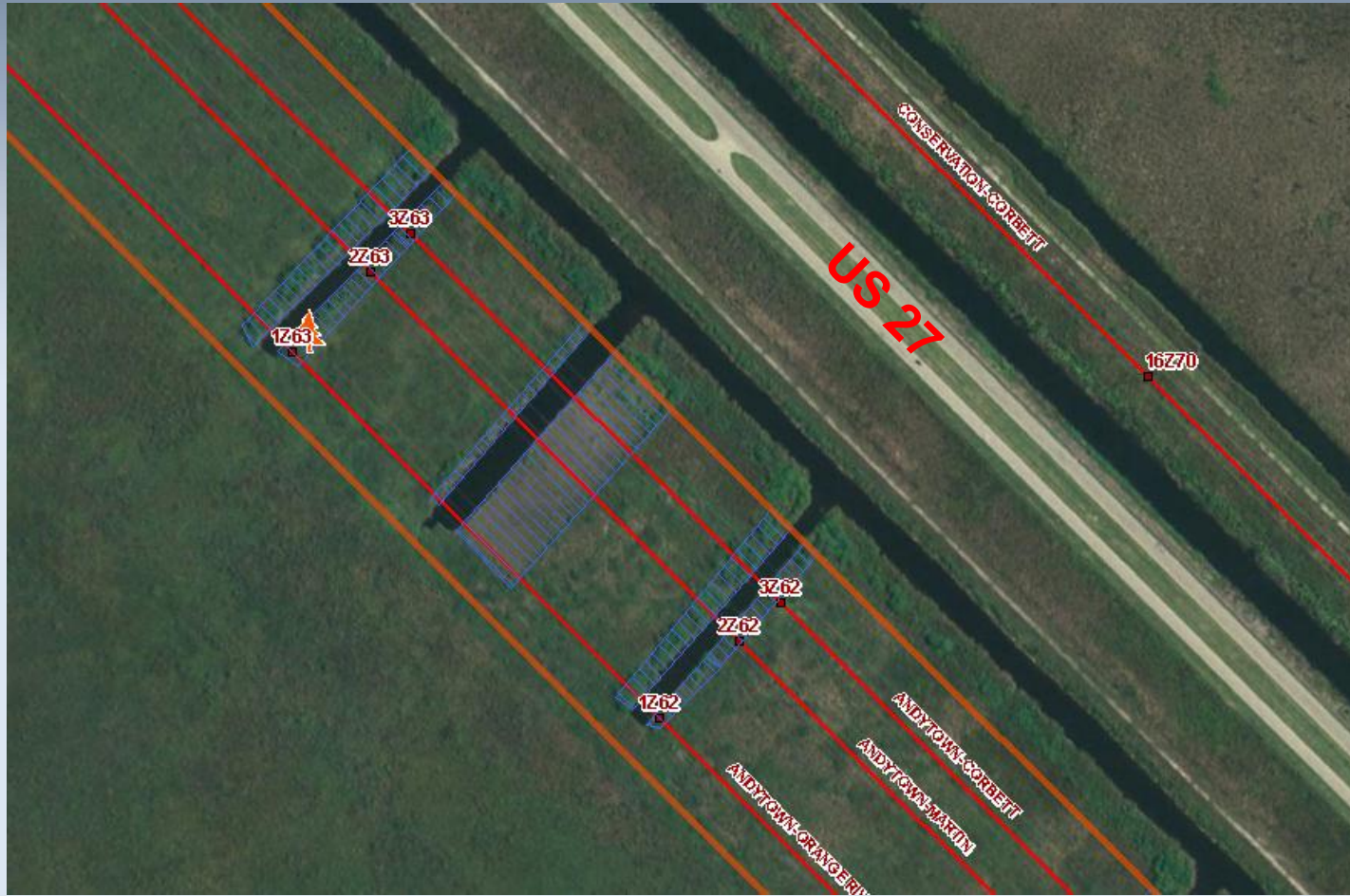
Fiscal Year Treatments (Broward): 2010



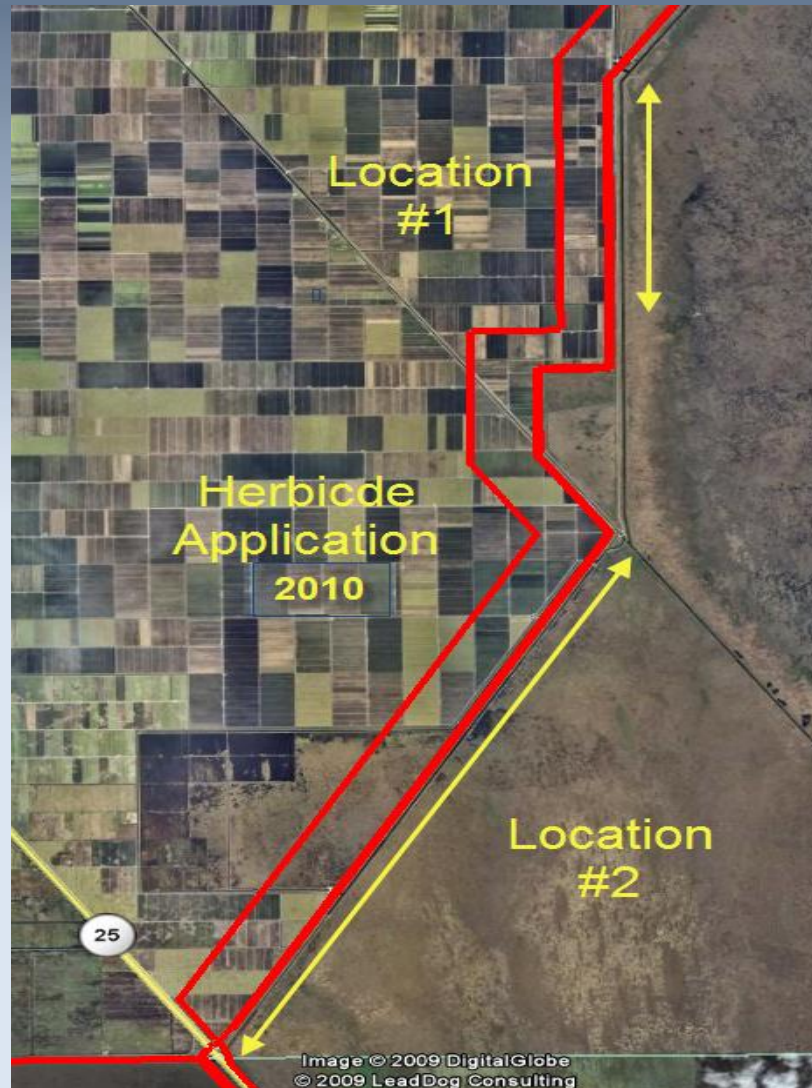
- Treatment Area #1
 - Control of Melaleuca, Burma Reed, and Australian Pine, Brazilian Pepper, and Queensland Umbrella for access and reliability on structure pads and spoil areas.

Fiscal Year Treatments (Broward): 2010

- Treatment Area #1



Fiscal Year Treatments (Palm Beach): 2010



Location #1

- Control of exotics following mowing in 2008.

Location #2

- Control of exotics along ditches, structure pads and other un-mowed areas.

Monitoring

- All transmission right-of-ways are inspected two times a year. During these inspections:
 - New threats are identified and work prescriptions and management plans are developed.
 - Previous treatments are inspected and monitored for control.
 - Inspection are done by truck, boat/airboat/marshmaster, or helicopter

Innovations and Successes

- New Software – Clearion Mobile

2010 Everglades Invasive Species Summit Innovations and Successes

The screenshot displays the FPL TVM software interface. The main window shows an aerial map of the Andy Town area, with several treatment zones outlined in red and orange. The zones are labeled with IDs: 1263, 2263, 3263, 1262, 2262, 3262, and 16270. The zones are named 'ANDYTOWN-MARTIN' and 'ANDYTOWN-ORANGE RIVER'. A cyan rectangle highlights a specific area within the 2263 zone. The software interface includes a menu bar (Main, Tools, FPL TVM), a toolbar with various navigation and editing tools, and a right-hand panel for Object Properties.

The Object Properties panel shows the following details for the selected feature:

Property	Value
RX Type	Spot Treat - Light
Work Ticket ID	070110150308858
RX Date	09/03/2010
RX Cycle	36
Status	Pending
Unit Type	ACRES
RX Accessibility	BOAT OR AIRBOAT
RX Remarks	TREAT ENTIRE PAD OF ALL...
Acres	2.50
Length	1528.67
Patrol Accessibility	Boat
Restriction	WETLAND
Crew Complete Date	
Crew Complete User	
GF Approved Date	
GF Approved User	

The status bar at the bottom indicates the current location: 4909322.532 - 4318579.493 Feet, and the map layer: ANDYTOWN-ORANGE RIVER 500KV... OVR CAPS NUM.

EVERGLADES CISMA

Questions?



EVERGLADES CISMA

Invasive Species Programs

Broward County

Andytown – Orange River 500 kV pad treatments (Treatment Area 1)

- Description
 - Low volume foliar application of herbicide, frill & girdle and cut stump treatments
- Objective
 - Elimination/control of exotic vegetation that can impact the safety and operation of the transmission system and provide access to structures.
- Partners
 - None
- Start/End Dates
 - August 14, 2010 – September 15, 2010
- Status
 - Assigned
- Funding (FY): 2010
- Annual Summary
 - 55 acres total

Invasive Species Programs

Palm Beach County

Corbett 500kv & 230kv Herbicide Project

- Description
 - Low volume foliar application of herbicide, frill & girdle and cut stump treatments
- Objective
 - Elimination/control of exotic vegetation that can impact the safety and operation of the transmission system.
- Partners
 - None
- Start/End Dates
 - April 1, 2010 – September 30, 2010
- Status
 - Unassigned
- Funding (FY): 2010
- Annual Summary
 - 138 acres – Brazilian Pepper, Melaleuca, and Willow are the target species.

Invasive Species Programs

Palm Beach County

Conservation – Corbett 500 kV Rolling Project

- Description
 - Rolling of Sawgrass and Cattail within the ROW
- Objective
 - Reduce the threat of wildfire by reducing fuel levels and dead matter accumulation.
- Partners
 - None
- Start/End Dates
 - December 1, 2010 – February 28, 2011
- Status
 - Unassigned
- Funding (FY): 2011
- Annual Summary
 - 157 acres – Sawgrass, Cattail and Melaleuca are the target species.