

# Big Cypress National Preserve

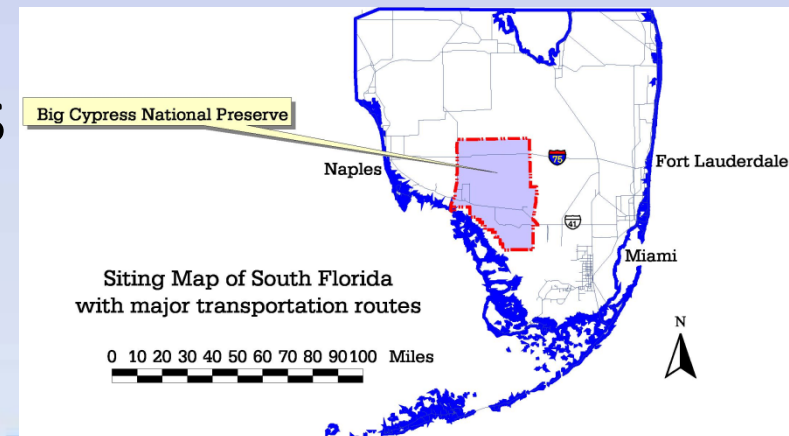
James N. Burch, PhD., Big Cypress National Preserve

William A. Snyder, Big Cypress National Preserve



# Invasive Species Programs

- 1978- Records begin for exotics control
- 2003- Treatment of entire preserve (2950 sq. km.) completed for melaleuca
- Early 2000s- shift concentrated efforts to Schinus control
- Lygodium and other exotics
- Native habitat restoration.



# Priority Plant Species

- **Priority Plants**
  - *Schinus terebinthifolius*
  - *Melaleuca quinquenervia*
  - *Lygodium microphyllum*
- **Newly Detected Plant Species**
  - *Nymphoides cristata*



# Priority Animal Species

## Priority Animals:

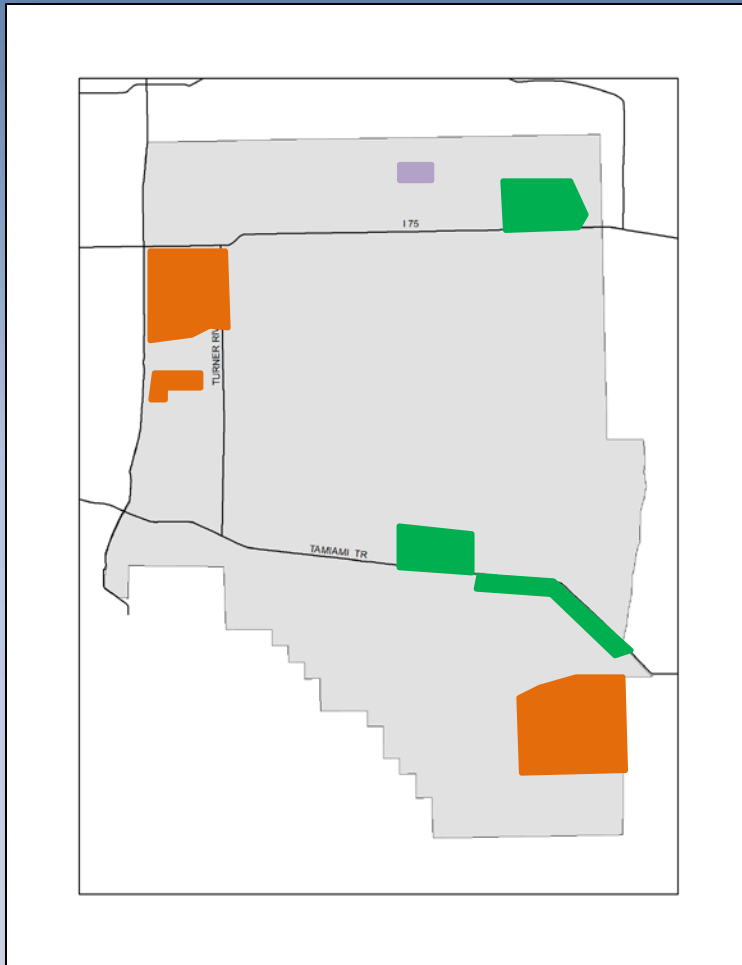
**None Formally Listed**


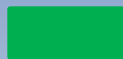

## Newly Detected Animals:

**Big Snakes (Pythons)**

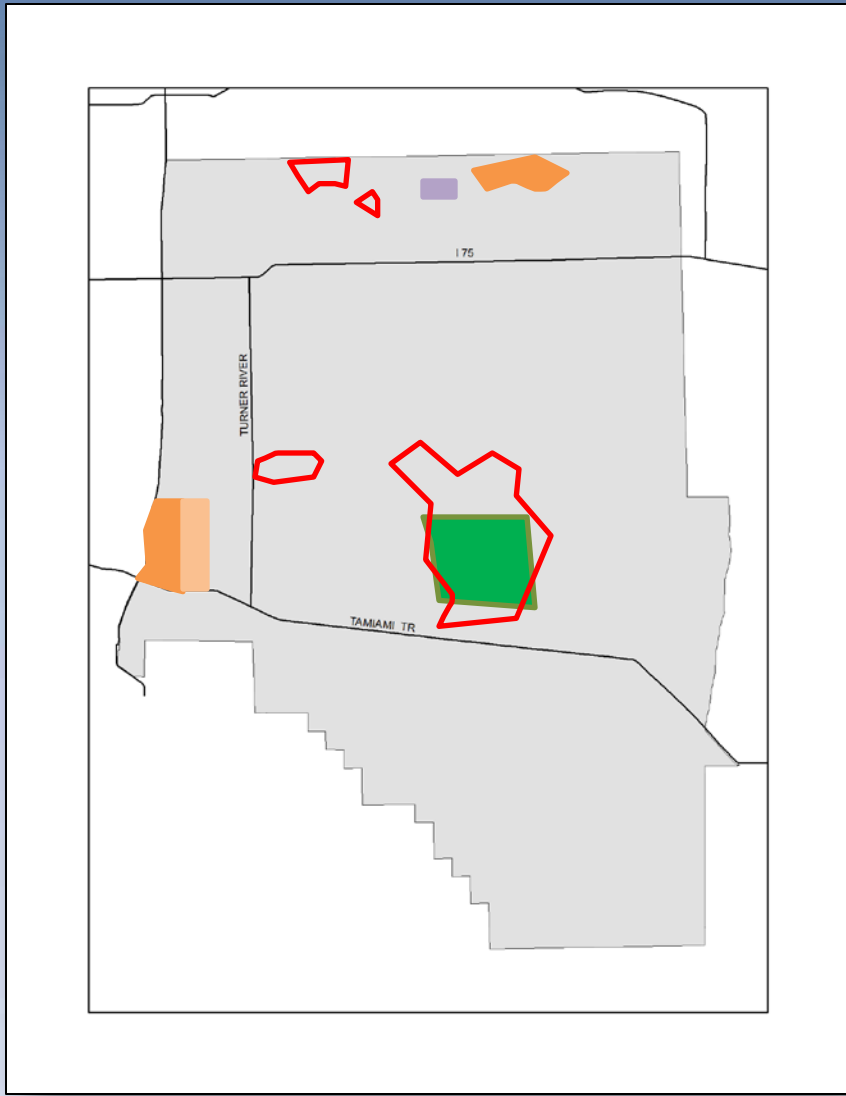



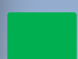


# Treatments: FY 2011



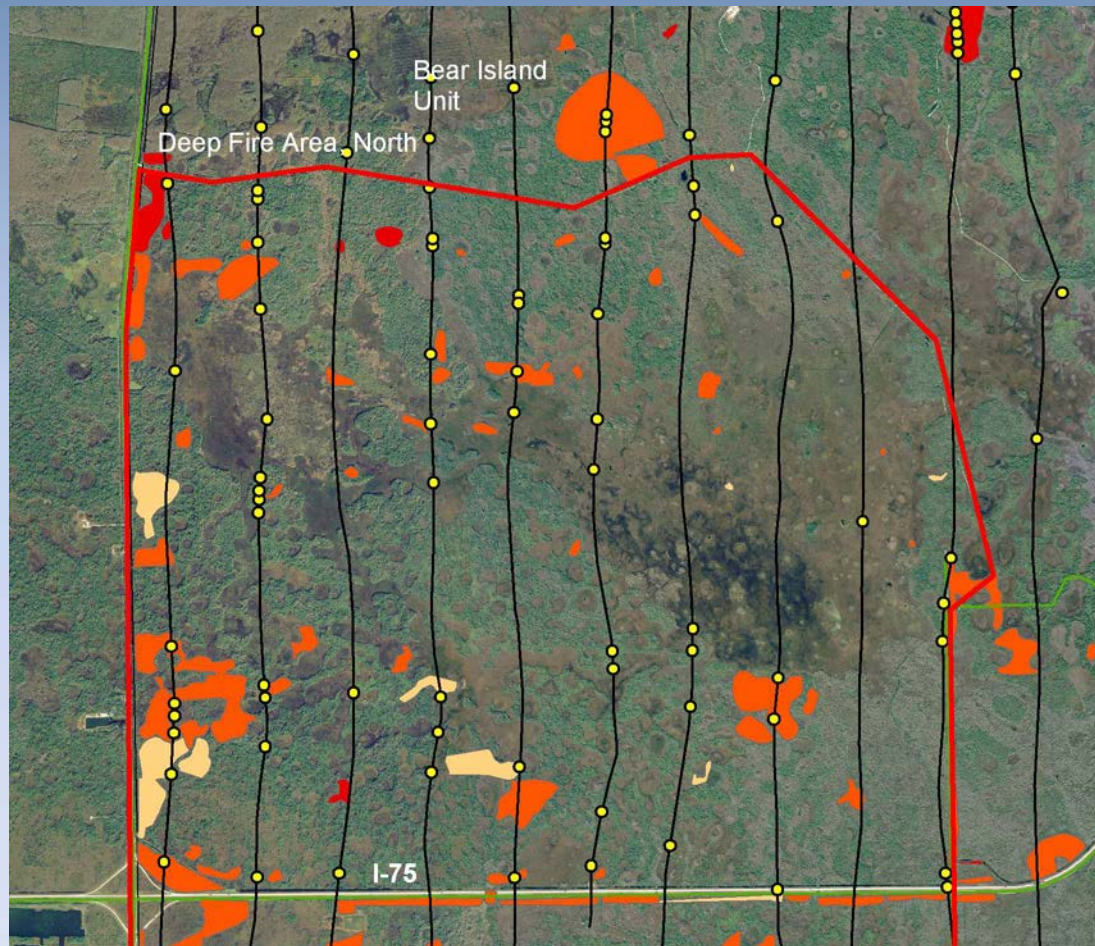
-  Schinus Treatment
-  Melaleuca Treatment
-  Restoration

# Planned Treatments: FY 2012



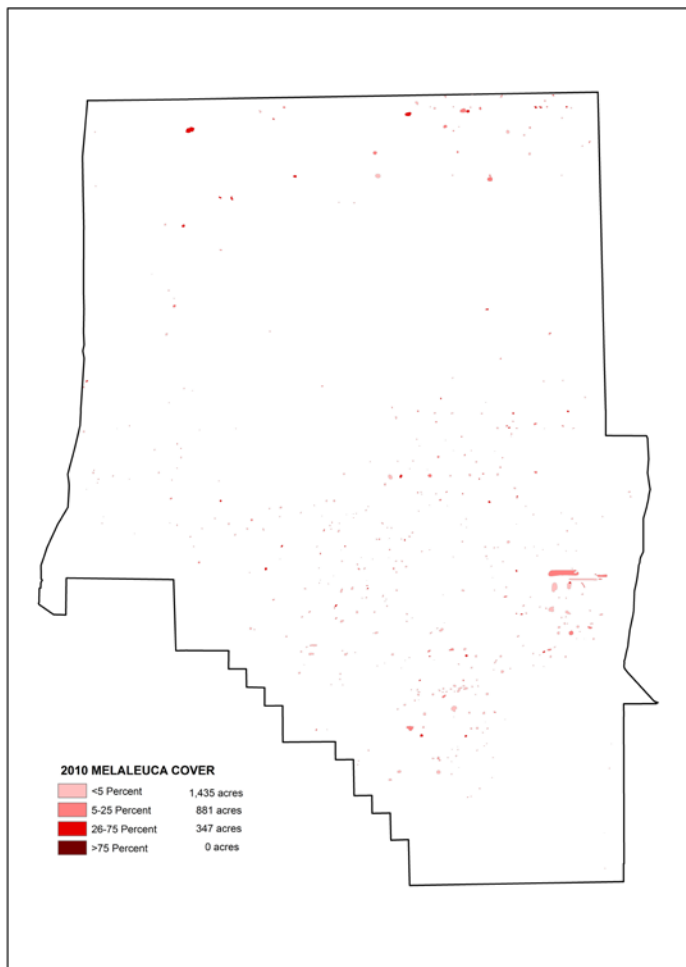
-  Schinus Treatment
-  Melaleuca Treatment
-  Restoration
-  Burned areas

# Monitoring



# Digital Aerial Sketch Mapping

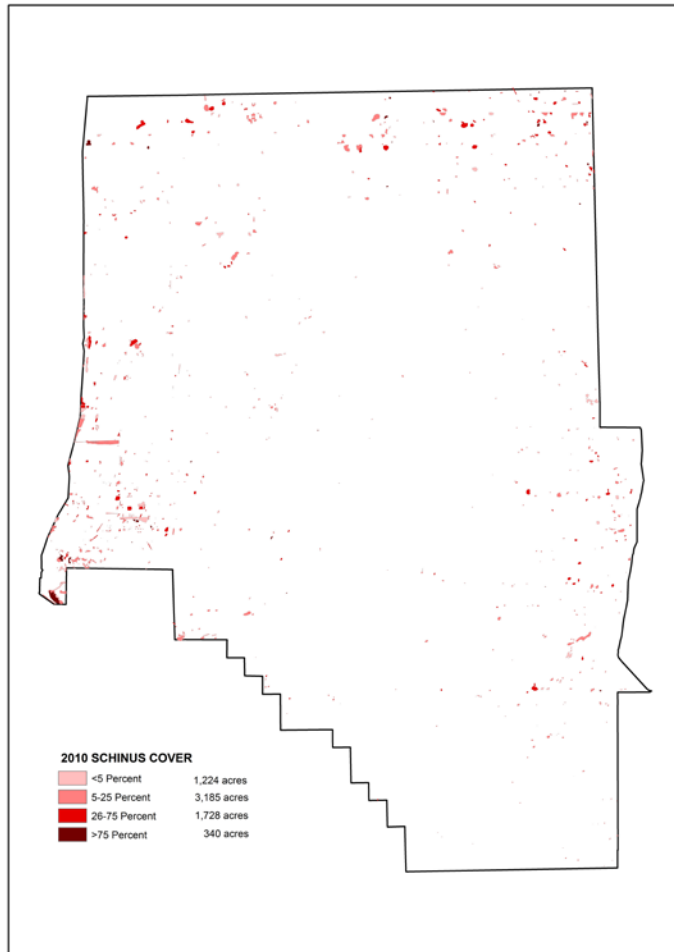
Big Cypress National Preserve



## Melaleuca

Coverage Class	Acres
High	347
Medium	881
Low	1435
<b>Total</b>	<b>2663</b>

# Digital Aerial Sketch Mapping

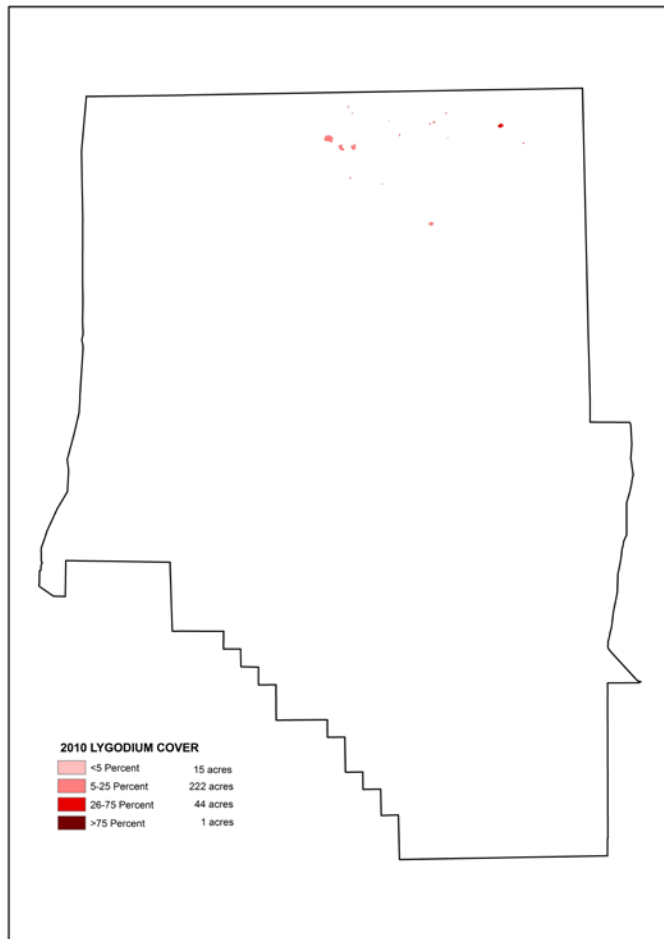


Big Cypress National Preserve

## Brazilian Pepper

Coverage Class	Acres
High	340
Medium	1726
Low	4409
Total	6475

# Digital Aerial Sketch Mapping



Big Cypress National Preserve

## Old World Climbing Fern

<u>Coverage Class</u>	<u>Acres</u>
High	1
Medium	44
Low	237
<b>Total</b>	<b>282</b>

# Innovations and Successes

*Nymphoides cristata*



# Innovations and Successes



2011 Everglades Invasive Species Summit

# Innovations and Successes



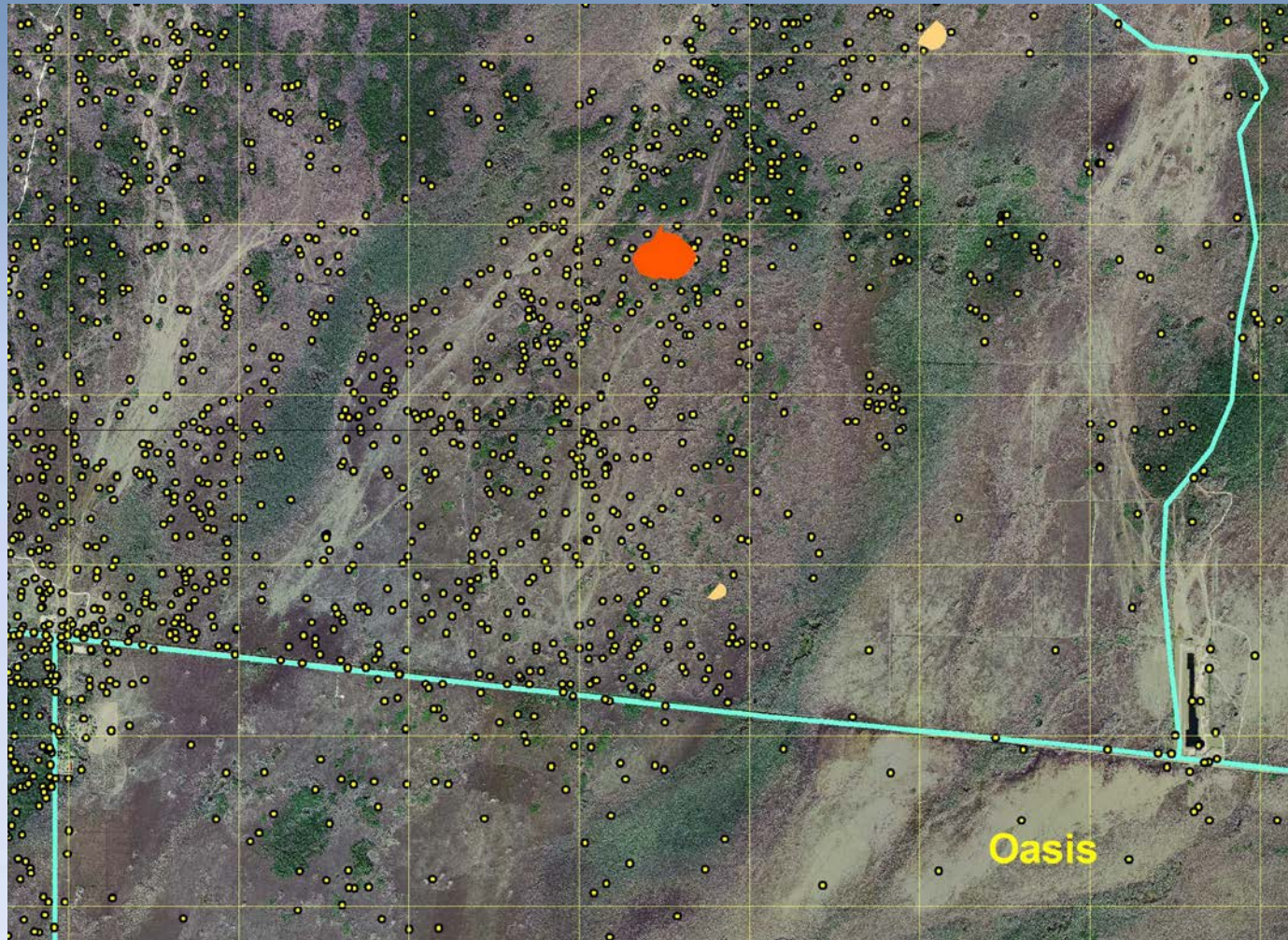
# Innovations and Successes

Florida/Caribbean  
EPMT crew

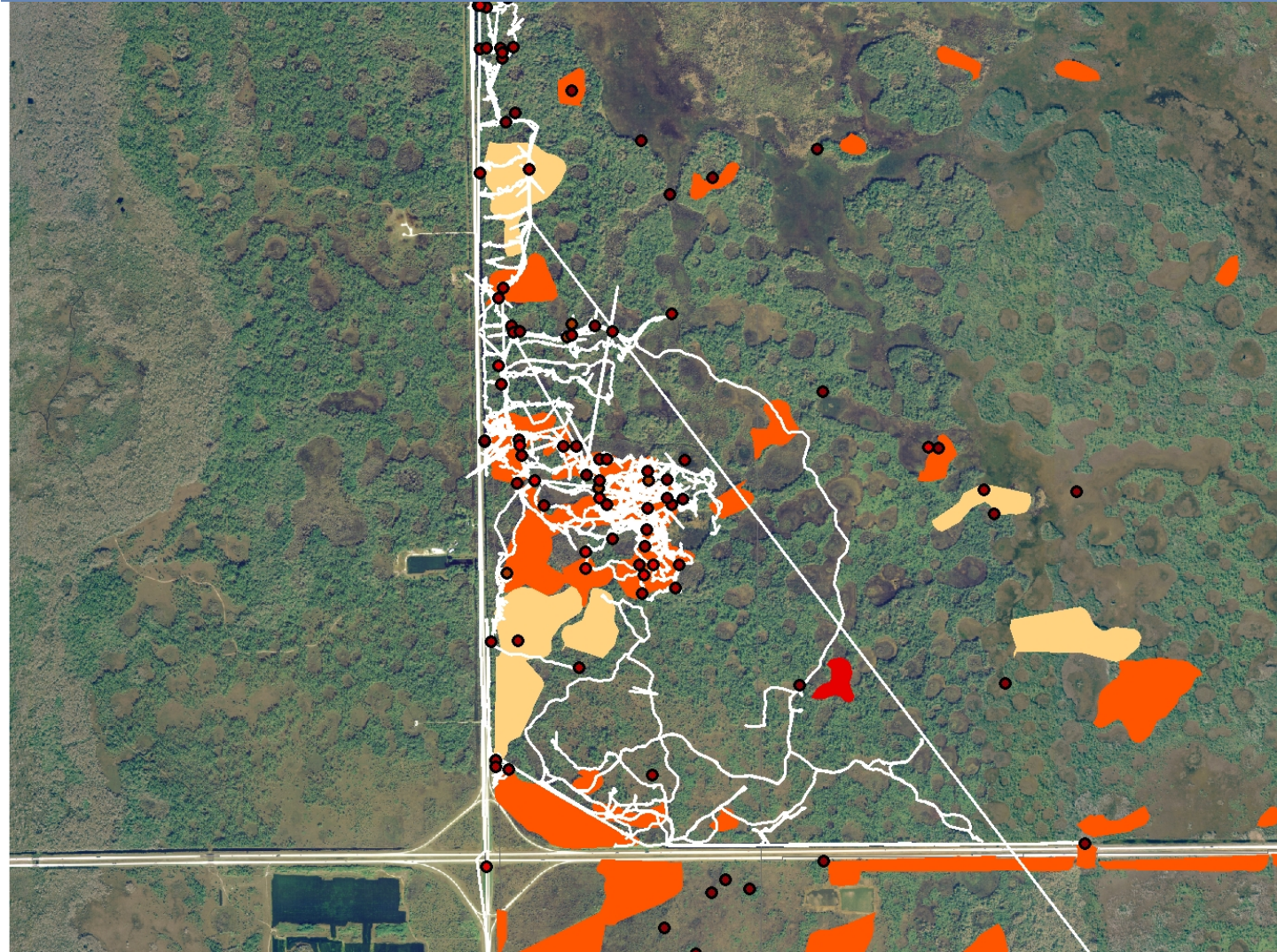


# Monitoring

Oasis Melaleuca treatment area



# Innovations and Successes



# Needs & Gaps

Melaleuca Information: stem counts and canopy acres

- Acknowledgements
  - Burned Area Rehabilitation (BAR) Program
  - Florida/Caribbean Exotic Plant Management Team
- Questions







# Monitoring



# Monitoring



# Innovations and Successes

*Nymphoides cristata*



# Monitoring

- Systematic Reconnaissance Flights
- ECISMA-wide Digital Aerial Sketch-mapping (DASM)

– Estimated Canopy Acres

	• <u>2008-09</u>	<u>2010</u>
• Melaleuca	506	342
• Schinus	2720	1668
• Lygodium	55	56