

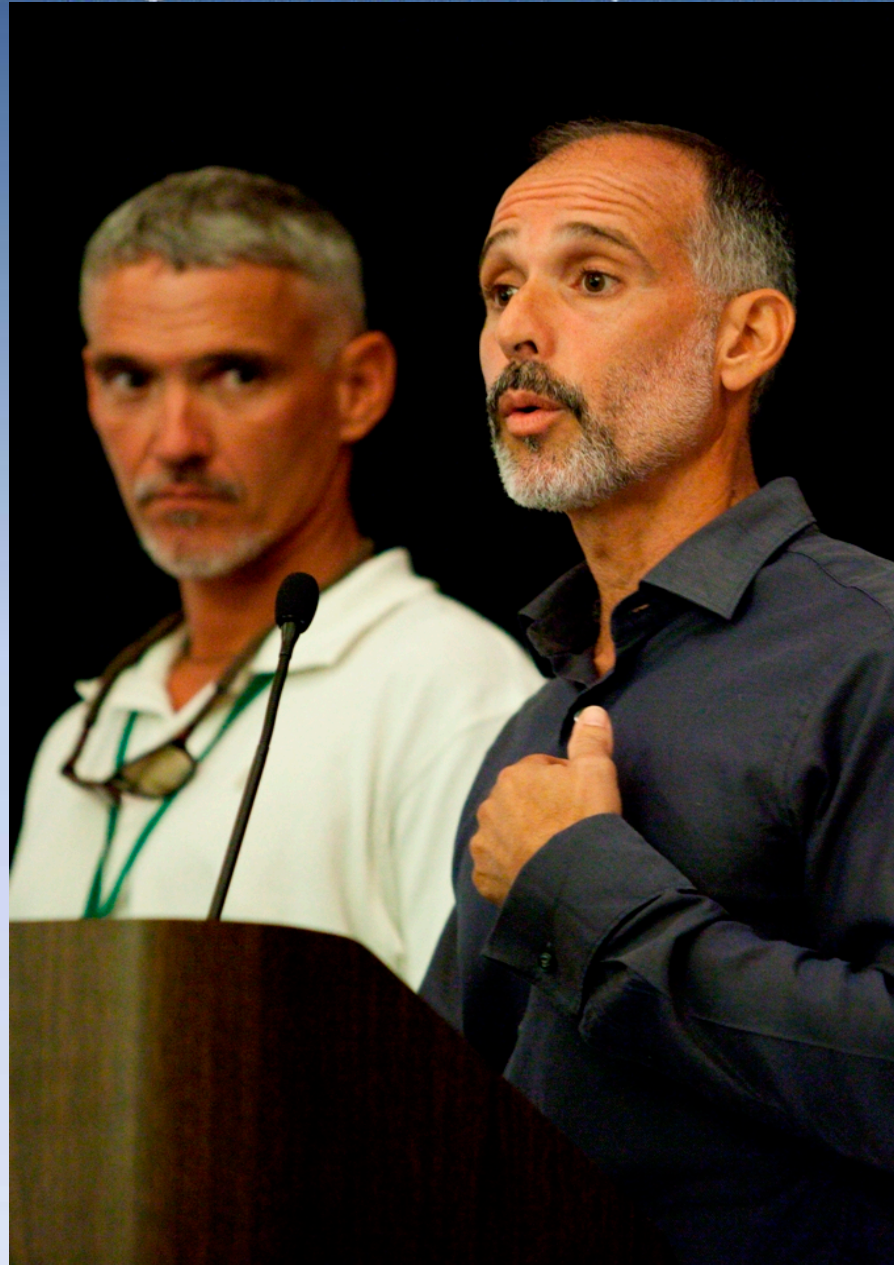
YEAR IN REVIEW



Everglades Cooperative Invasive
Species Management Area



2011 Everglades Invasive Species Summit



EVERGLADES CISMA

Full House



2011 Everglades Invasive Species Summit



EVERGLADES CISMA

iPhone App





ECISMA Interactive Displays

Tegu Radio-Telemetry

The Ballad of T-1 (Stump)





2011 Everglades Invasive Species Summit



EVERGLADES CISMA

2011 Everglades Invasive Species Summit



EVERGLADES CISMA

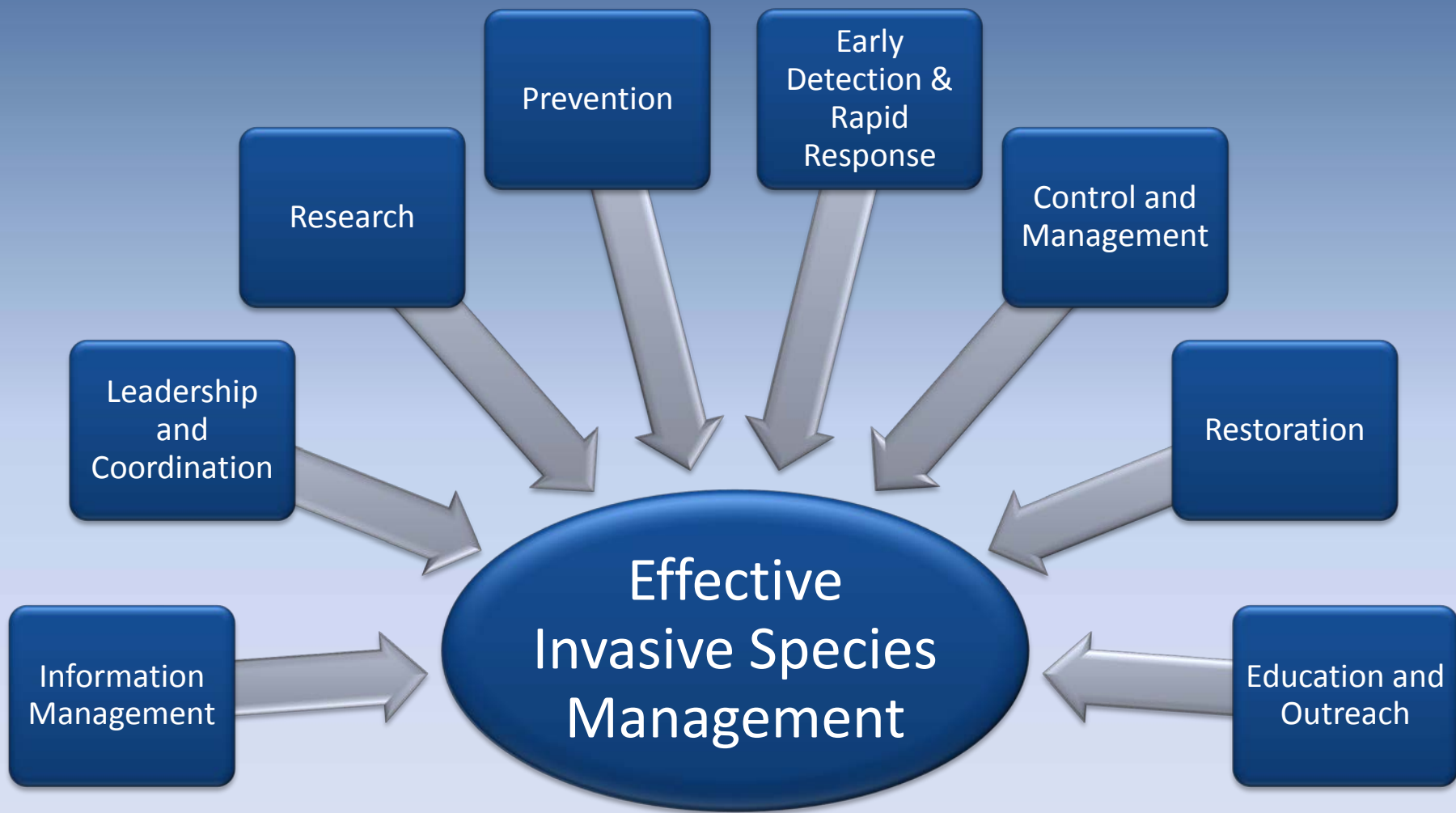
Invasive Species: Next Steps

Dan Thayer

SOUTH FLORIDA ECOSYSTEM RESTORATION SCIENCE COORDINATION
GROUP (SCG)



2011 Everglades Invasive Species Summit



Recommendations

- Recommend that Task Force promote federal prevention initiatives (Risk Analysis and Screening)
 - Need tools to stop the “oil leak”
- Facilitate development of resource sharing mechanisms across agencies (at Federal, State, and Local levels), particularly for EDRR
 - National Fire
- Promote establishment of Everglades EDRR Coordinator
 - Develop and direct a sustainable EDRR team with contributions from all stakeholders
- Recommend that Task Force promote increased base funding for priority invasive species.

2011 Everglades Invasive Species Summit

“The Everglades Cooperative Invasive Species Management Area is a formal partnership of federal, state, local government agencies, tribes, individuals and various interested groups that manage invasive species within the greater Everglades area ”

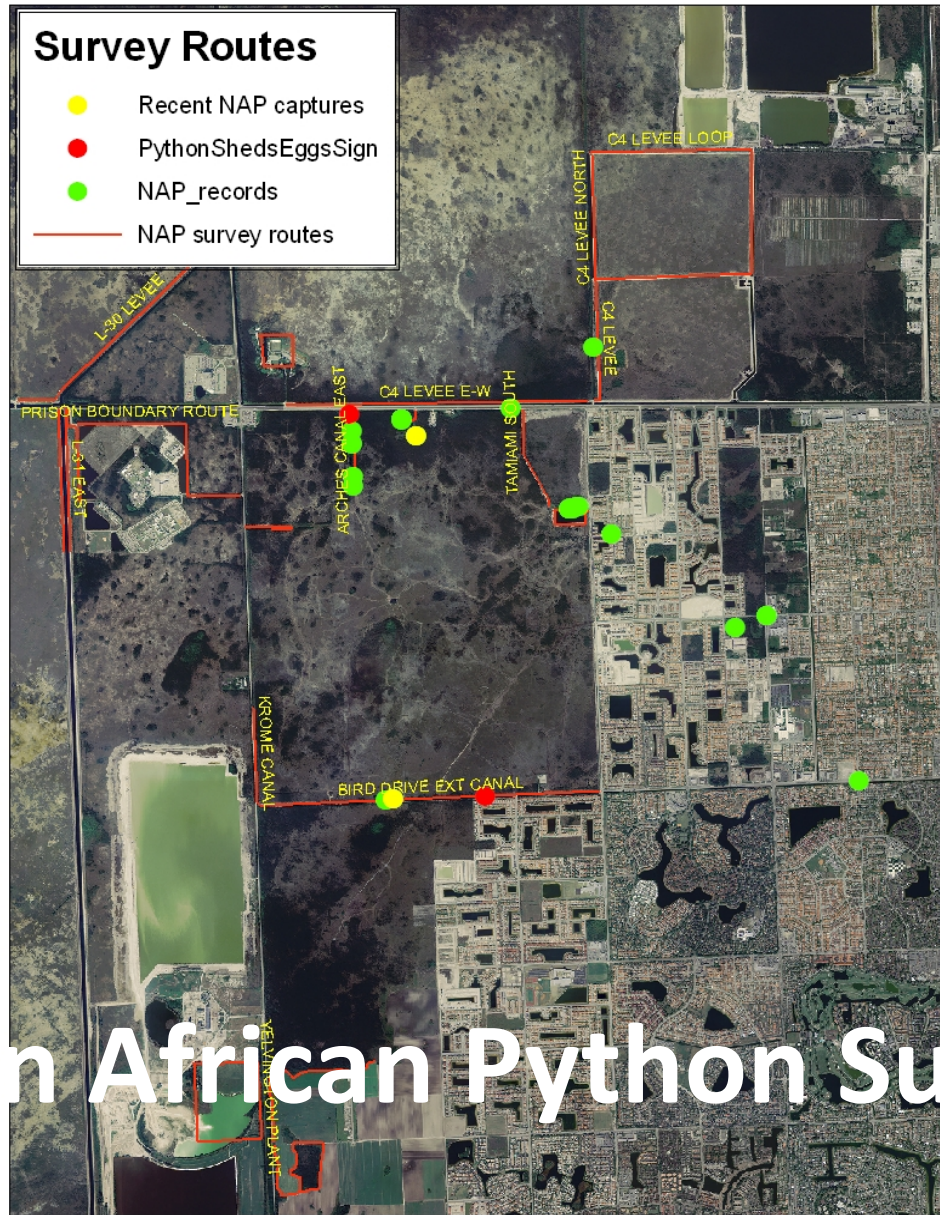


Early Detection Rapid Response Plan

EVERGLADES CISMA

Lumnitzera Surveys





Northern African Python Surveys



2011 Everglades Invasive Species Summit



EVERGLADES CISMA

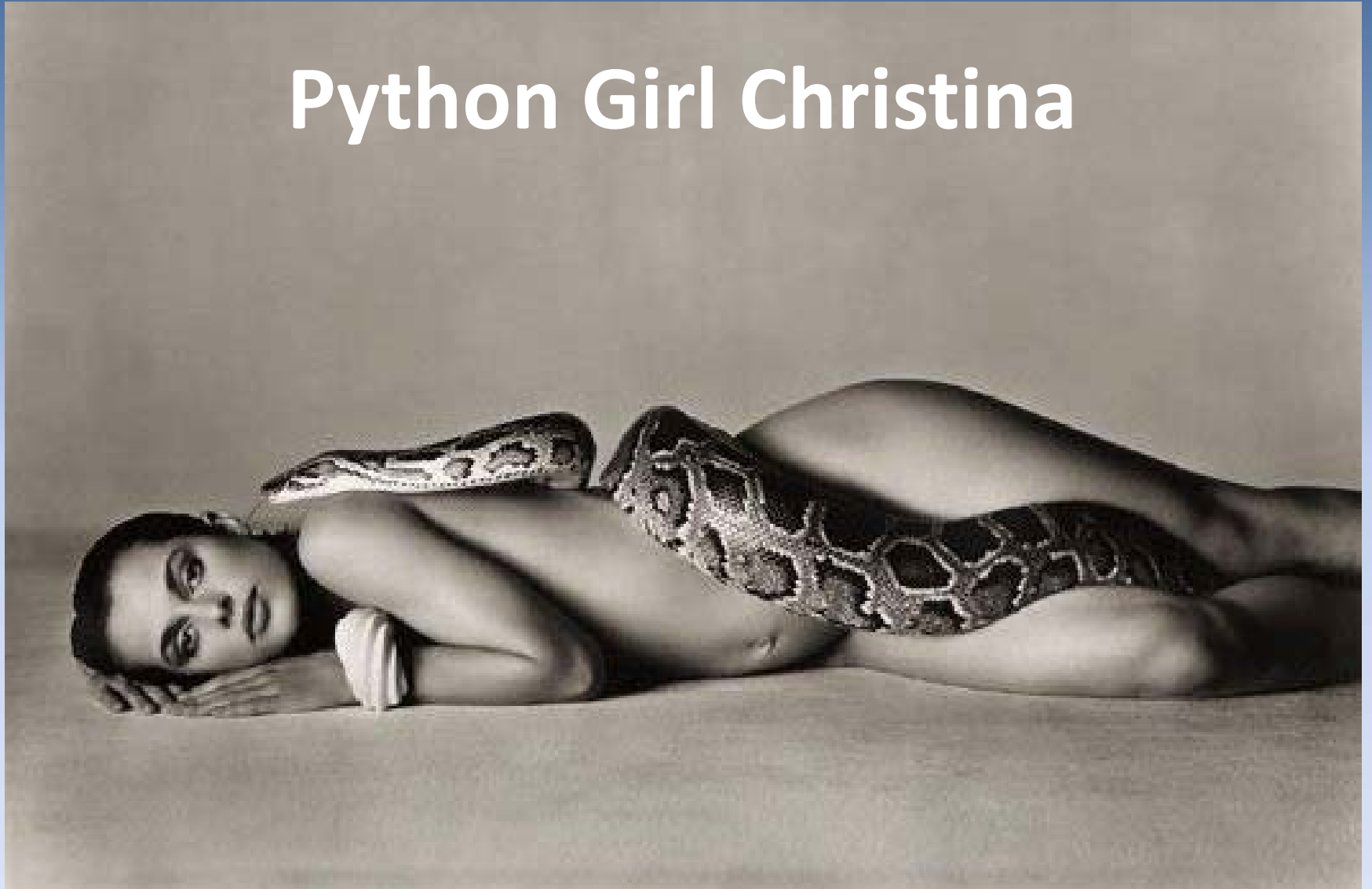
Python Dog Jake



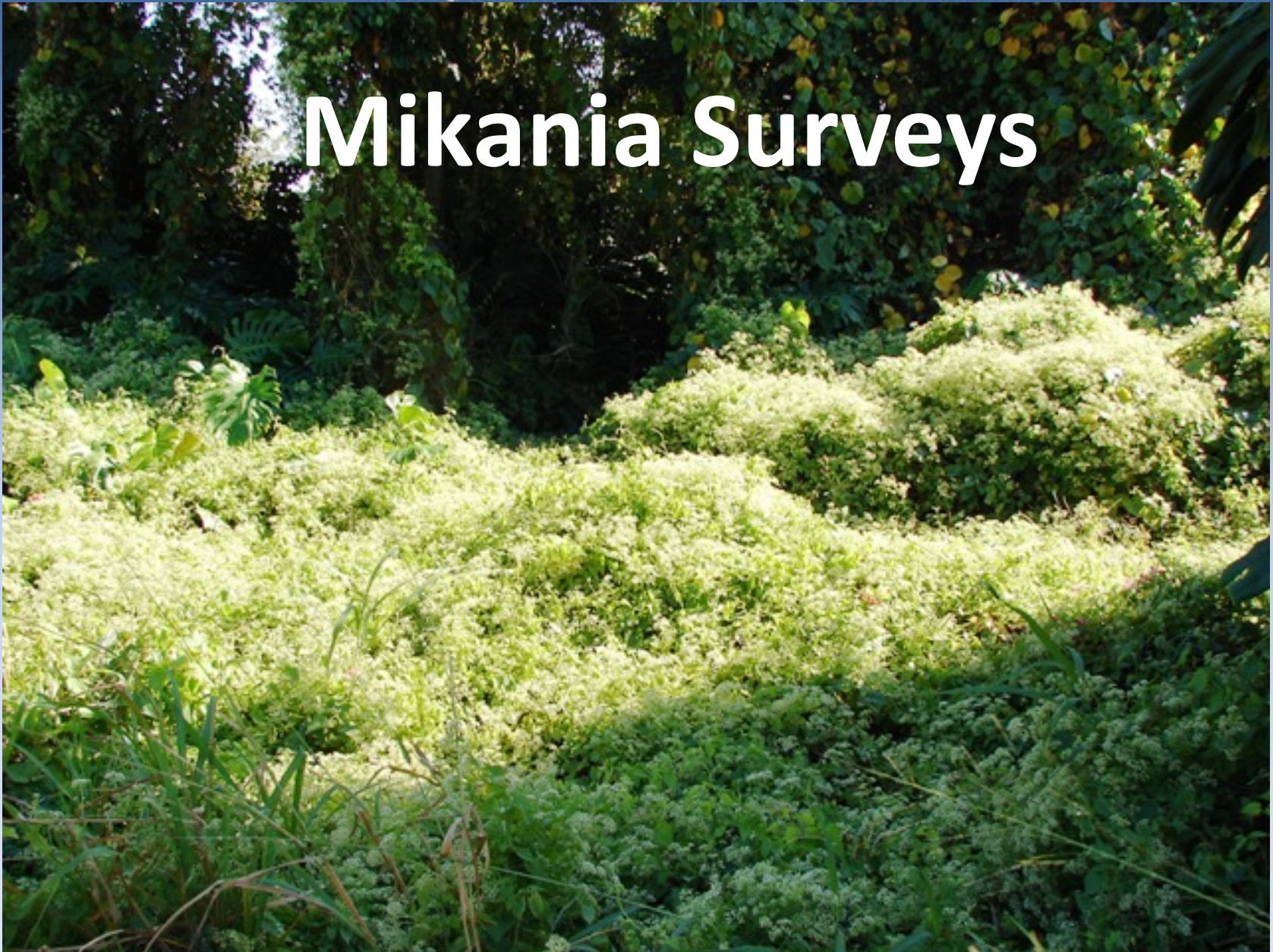
Python Man Bobby



Python Girl Christina



Mikania Surveys





Mikania Volunteer Workdays

EVERGLADES CISMA

2011 Everglades Invasive Species Summit



EVERGLADES CISMA

2011 Everglades Invasive Species Summit



EVERGLADES CISMA

HAPPY HOLIDAYS



FROM YOUR FRIENDS AT ECISMA

Digital Aerial Sketch Mapping





Everglades Cooperative Invasive Species Management Area

Newsletter



Volume 2, Issue 1

March 2011

Highlights Inside This Issue:

REDDy Training	2
iPhone APP	4
Trouble with Tegus	5
South Florida Ecosystem Task Force	6
2010 ECISMA Summit	7
USDA Wildlife Update	7
Another Day in Miami-Dade	8
Lumnitzera Eradication	9
Talking Beyond Prevention	10

Mikania: Preventing the Next Lygodium

- Jane Griffin Dozier, Miami-Dade Park and Recreation, and Dennis J. Giardina, FWC

Mikania micrantha, a vine native to Central and South America and the Caribbean, has been found growing in the continental United States in the Redland Agricultural Area of Miami-Dade County, Florida. Also known (frighteningly) as "mile-a-minute vine," it is on both the federal and state noxious weed lists, and is considered to be one of the worst invasive plant species worldwide. It is known to cover crops with a dense mat of foliage, and it exhibits the same behavior in disturbed forests.

It was first positively identified in Miami-Dade in November 2009 by Keith

Bradley, of the Institute for Regional Conservation. Immediately, the Florida Cooperative Agricultural Pest Survey (CAPS) Program, a cooperative survey and detection initiative between the USDA Animal & Plant Health Inspection Service (APHIS) - Plant Protection & Quarantine (PPQ) and the Florida Department of Agriculture & Consumer Services - Division of Plant Industry (FDACS-DPI), took action by inspecting plant nurseries (the suspected source of introduction) and surveying the area to determine its occurrence. Through these efforts, some vine removal took place in January 2010, and a Pest Alert was issued that same month.

The Redland area of

southwestern Miami-Dade is the county's historic agricultural community. Here exists an abundance of ornamental plant nurseries and fruit groves that host many weedy vine species. They trail up and over fences and shrubs,



Tony Pemas inspects *Mikania* scale structures, power poles, and street signs, and sometimes climb high up into the trees. So, it's no wonder that yet another vine went unnoticed for a while.

Mikania micrantha is very cryptic but becomes

Continued Mikania, page 3

ECISMA Completes 09-10 Mapping of Four Priority Plants

- LeRoy Rodgers, SFWMD

To address the need for more detailed and timely geospatial information on priority invasive plants, ECISMA cooperators are utilizing Digital Aerial Sketch Mapping (DASM) for invasive plant surveys in the Everglades.

Manual sketch mapping—drawing observations from low flying aircraft on paper maps—has been around for a while, but in the 1990s the U.S. Forest Service began integrating computing and GPS technologies with sketch mapping to make a very efficient mapping sys-

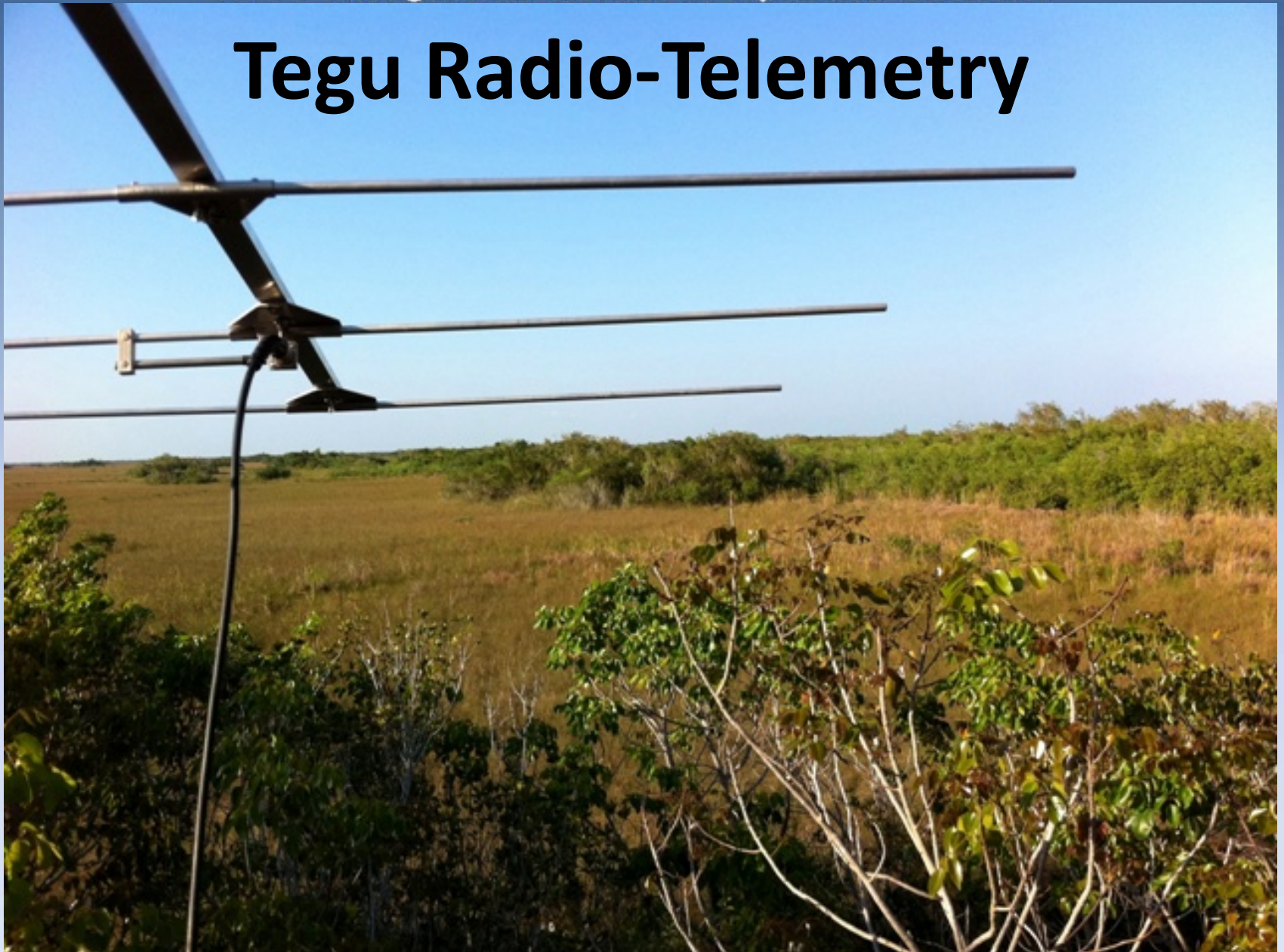
tem for features not reliably detected using other remote sensing techniques. The current DASM system utilizes touch screen computers, GPS receivers, specialized software, and high resolution imagery, allowing trained observers to digitize spa-

Continued Survey, page 2

Laurel Wilt Rapid Response Aerial Surveys



Tegu Radio-Telemetry

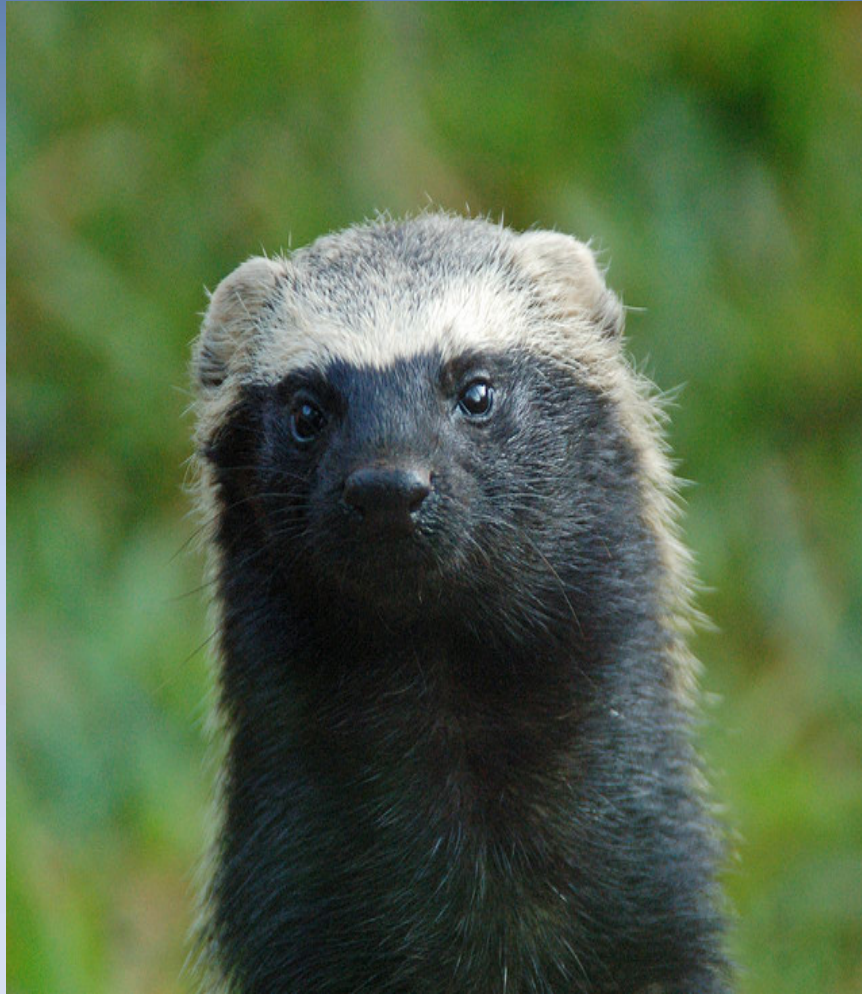


2011 Everglades Invasive Species Summit



EVERGLADES CISMA

Grison



Tayra





Tegu Nest



2011 Everglades Invasive Species Summit



EVERGLADES CISMA

2011 Everglades Invasive Species Summit



EVERGLADES CISMA

2011 Everglades Invasive Species Summit



EVERGLADES CISMA





Monitor Lizard Surveys C-51 Canal



2011 Everglades Invasive Species Summit



EVERGLADES CISMA





Most Fish

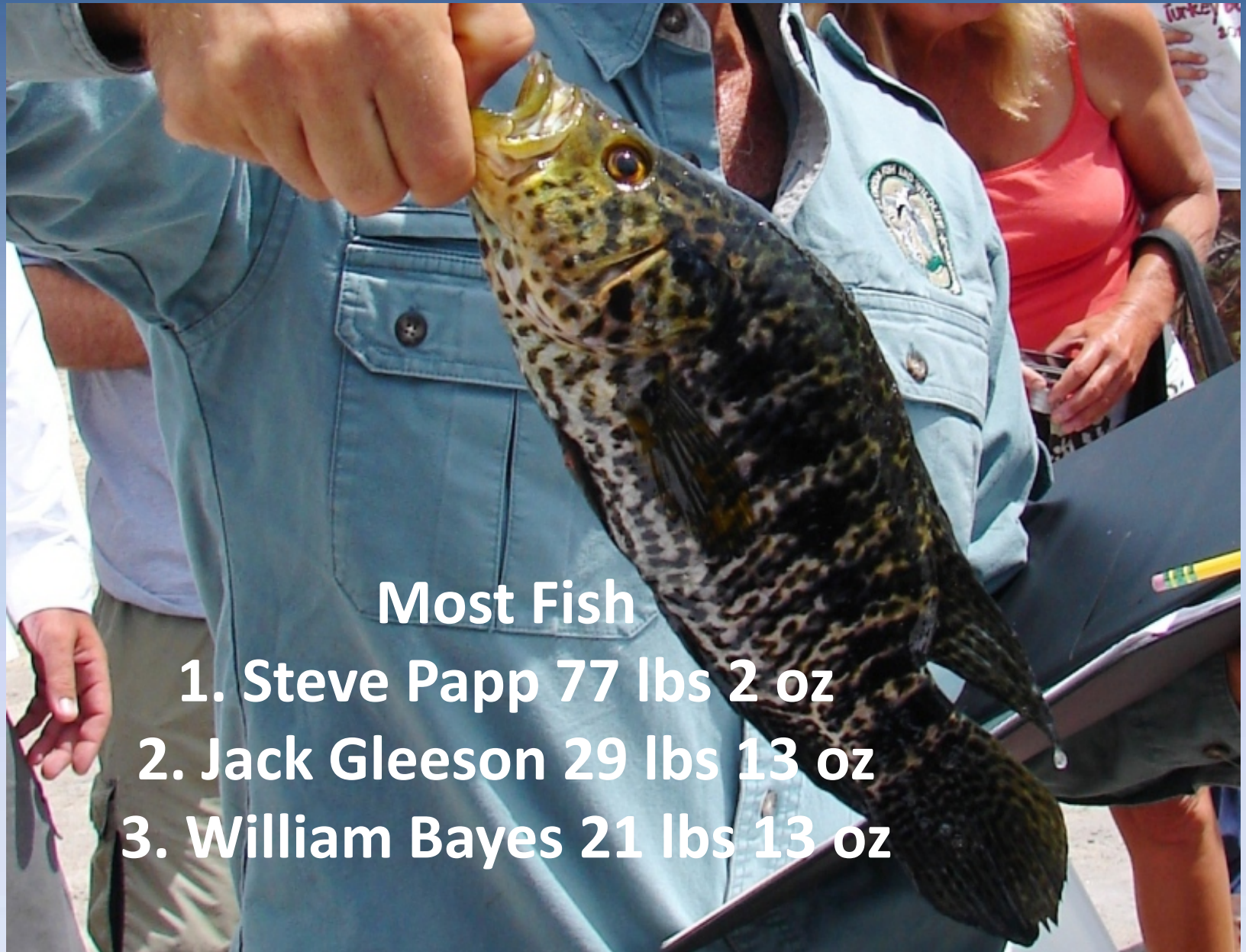
1. Steve Papp 77 lbs 2 oz
2. Jack Gleeson 29 lbs 13 oz
3. William Bayes 21 lbs 13 oz

2011 Everglades Invasive Species Summit



Non Native Slam
- Steve Papp 7 species

EVERGLADES CISMA



Most Fish

1. Steve Papp 77 lbs 2 oz
2. Jack Gleeson 29 lbs 13 oz
3. William Bayes 21 lbs 13 oz

2011 Everglades Invasive Species Summit



Overall

- 10 distinct species-

436 individual fish

- 225 lbs 15 oz of fish removed

EVERGLADES CISMA



Largest fish

1. Jack Gleeson 8 lbs 6 oz

2. Steve Papp 6 lbs 4 oz

3. John Calus 2 lbs 6 oz



THANK YOU



Bon Appétit!