

Everglades National Park

Burmese Pythons

Skip Snow

Everglades National Park

2011



History/Background

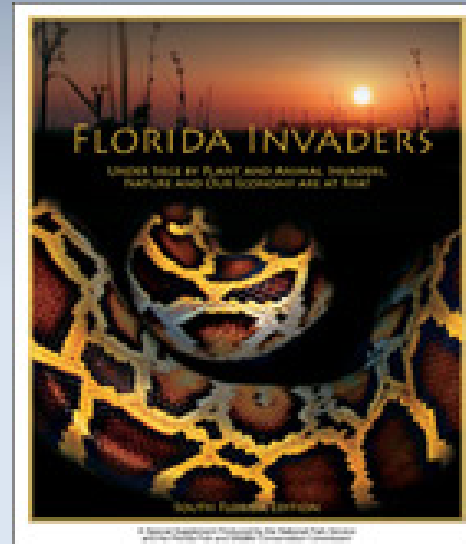


ENP Shark Valley 19 July 2011

History/Background

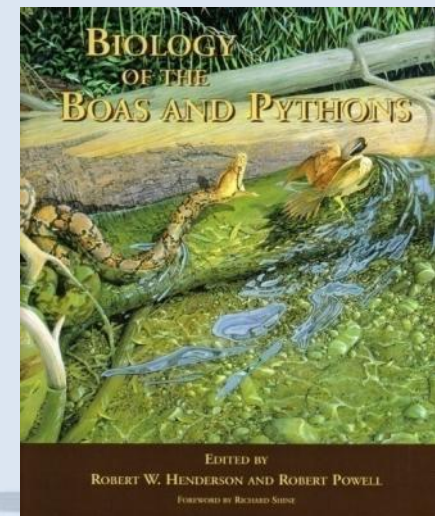
www.FloridaInvaders.org or www.EvergladesCisma.org

www.nps.gov/ever/naturescience/burmesepythonresearch.htm



Giant constrictors: biological profiles and an importation risk assessment for nine large species of pythons, anacondas, and the boa constrictor

Robert N. Reed and Gordon H. Rodda
USGS Fort Collins Science Center, 2009



Priority Animal Species

(see Kline for fish)

• Priority Animals

- Bull Terrier
- Turkey Vulture
- Spotted Owl
- Ferruginous Parula
- State Woodpecker
- Common Nighthawk
- Sandhill Crane



recipient

for

(sites)

(nesters)

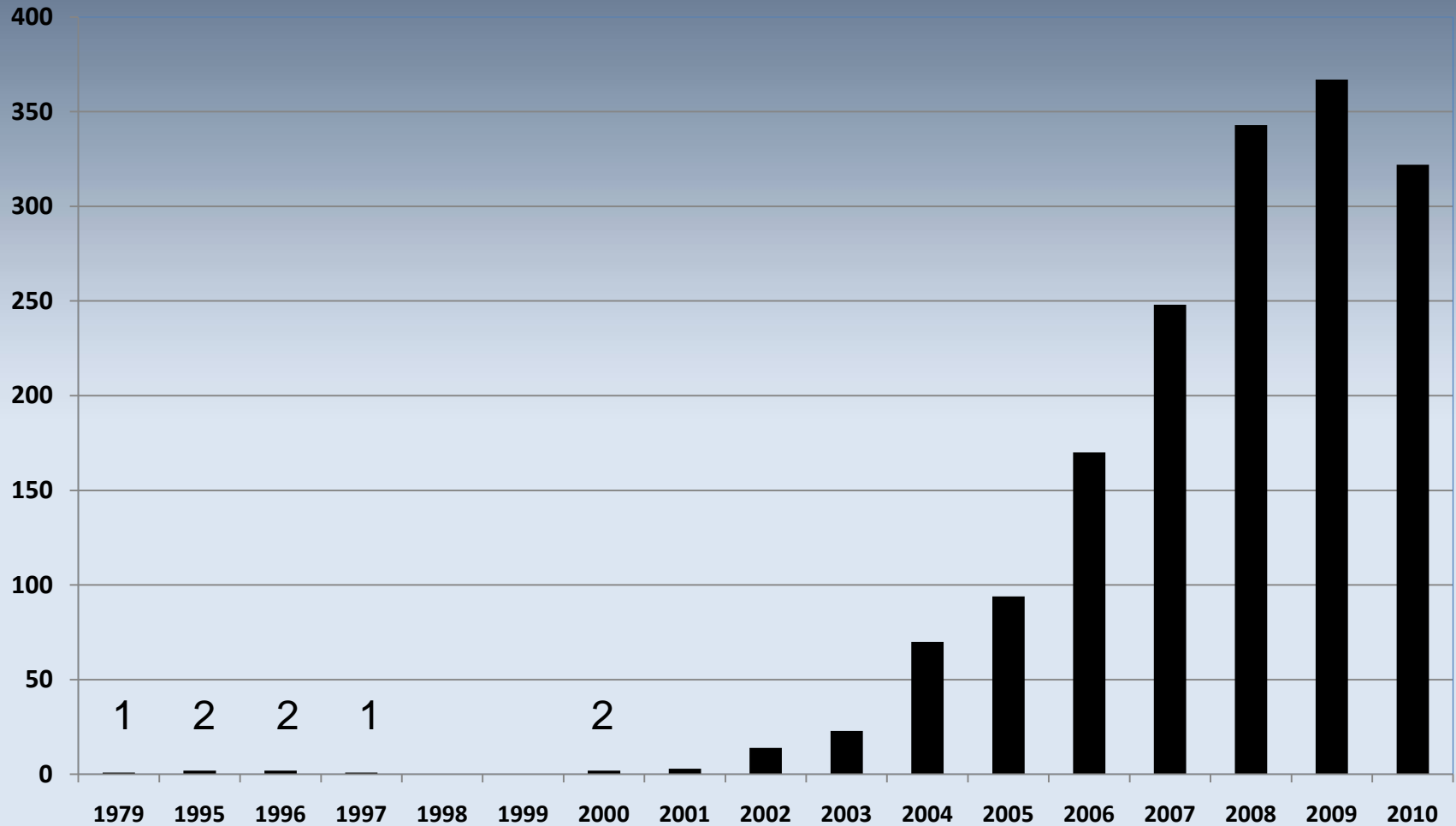
• New

- Nighthawk
- Turkey Vulture

- **Nile monitor** (proximity alert – candidate for eradication?)
- Giant Whiptail (proximity alert – status and distribution)

or

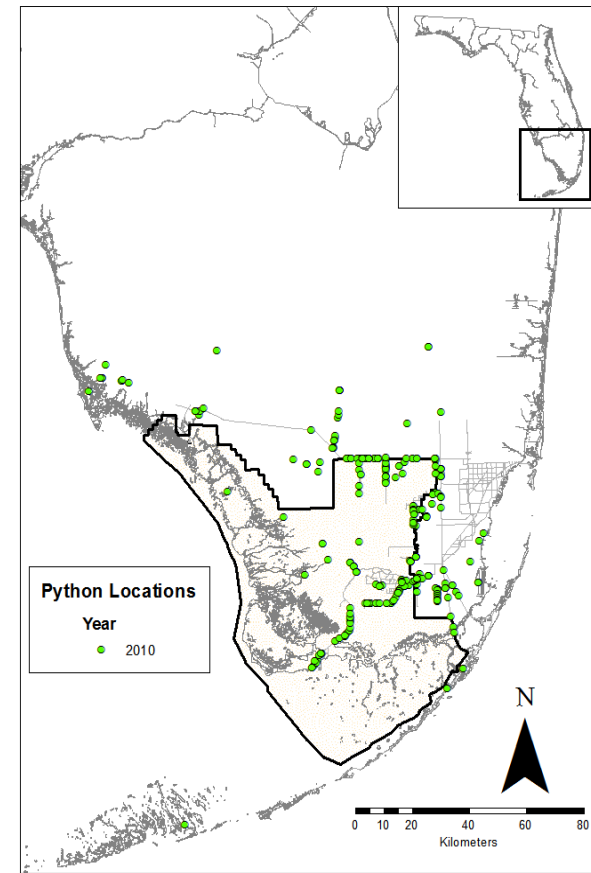
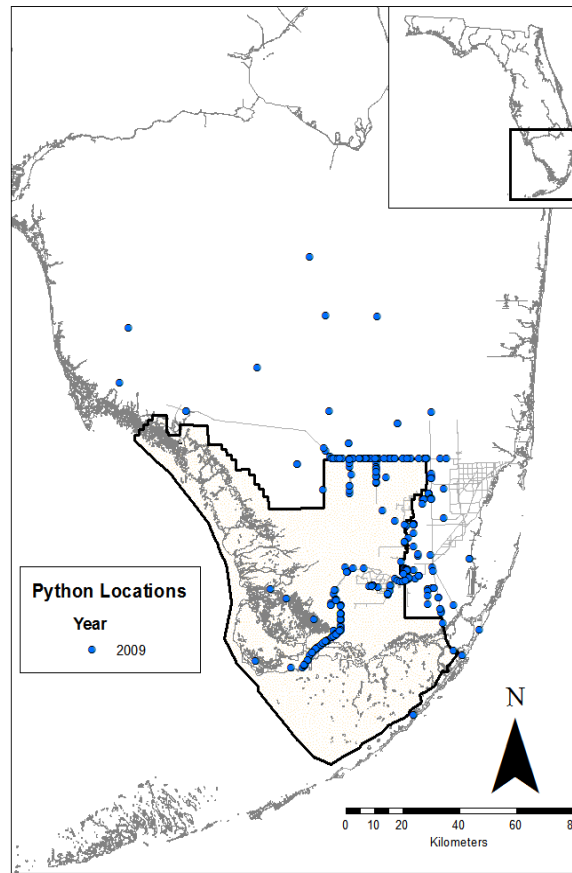
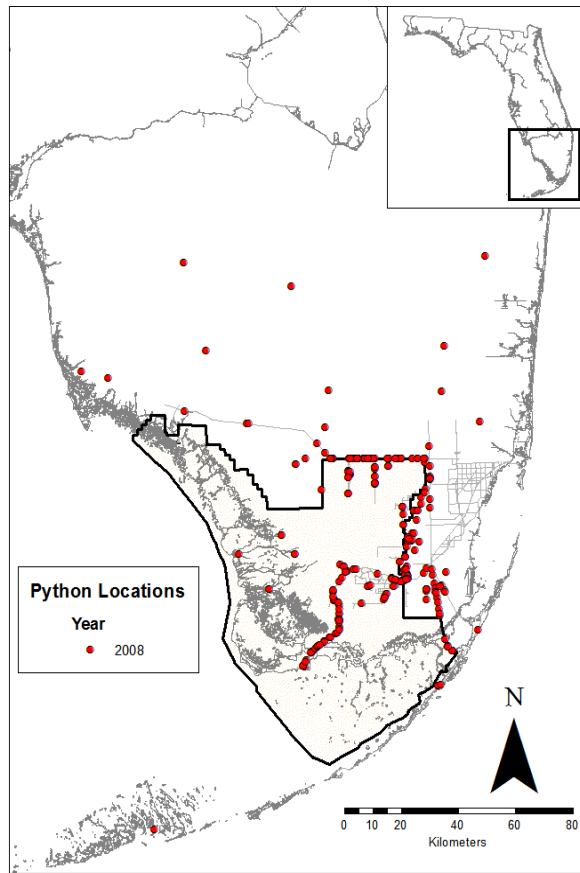
Pythons Removed*



* 86 as of 20 July 2011

Burmese Python Distribution

South Florida



Source: Dr. Frank Mazzotti and others, March 2011.

Python with Eggs 27 May 2011



2010 Everglades Invasive Species Summit
Tamiami West Wading Bird Colony
June 8 and 14, 2011



EVERGLADES CISMA

Cardinal Consumed



EVERGLADES CISMA

Guinea Fowl Hen and 10 Eggs



Recent Investments

- Support of Python Detection Efforts Using Detector Dogs – an 11 month agreement with Auburn University
- Train and Facilitate Expansion of Early Detection and Rapid Response Teams for Large Exotic Snakes – a 2 year agreement with The Nature Conservancy
- Maintenance and Enhancement of an Everglades Invasive Animal Web and Mobile Reporting System – a 5 year agreement with The University of Georgia
- Support for Nonnative Pet Amnesty Program including Adoption and Reporting Hotline – a 3 year and 8 months agreement with the Florida Fish and Wildlife Conservation Commission

Needs & Gaps

- Federal prevention initiatives for non-native wildlife (risk assessment and screening).
- More risk assessment science to support prevention initiatives.
- Development of sustainable resource sharing and reimbursement mechanisms across agencies (Federal, State, and Local levels), particularly for EDRR (consider the appropriateness of the National Interagency Fire Organization as a model).
- Research and development of tools for invasive animal EDRR.
- Establishment of Everglades EDRR Regional Coordinator(s).

Acknowledgments and Questions?

South Florida Water Management District - Bob Hill

US Fish and Wildlife Service

Florida Fish and Wildlife Conservation Commission

Smithsonian Feather Identification Lab - Carla Dove

US Geological Survey

Ken Rice, Ronnie Best, Gordon Rodda, Robert Reed, Kristen Hart

Florida Museum of Natural History

Laurie Wilkins, Kenneth Krysko, James Nifong

University of Florida

Frank Mazzotti, Mike Cherkiss, Mike Rochford, Brian Jeffery, Matt Brien, Mark

Peyton, Alex Wolf, Brian Greeves, Toren Hill, Trey Kieckhefer, Brian Smith,

Sergio Gonzalez, Joy Vinci

Davidson College and Auburn University

Michael Dorcas, Christina Romagosa, Bart Rodgers, Melissa Miller and

Dog Team Volunteers

Miami-Dade County Anti-Venom Unit

Everglades Python Patrol

Visitors to Everglades National Park

Park Staff

Jake, Ivy, and Nancy