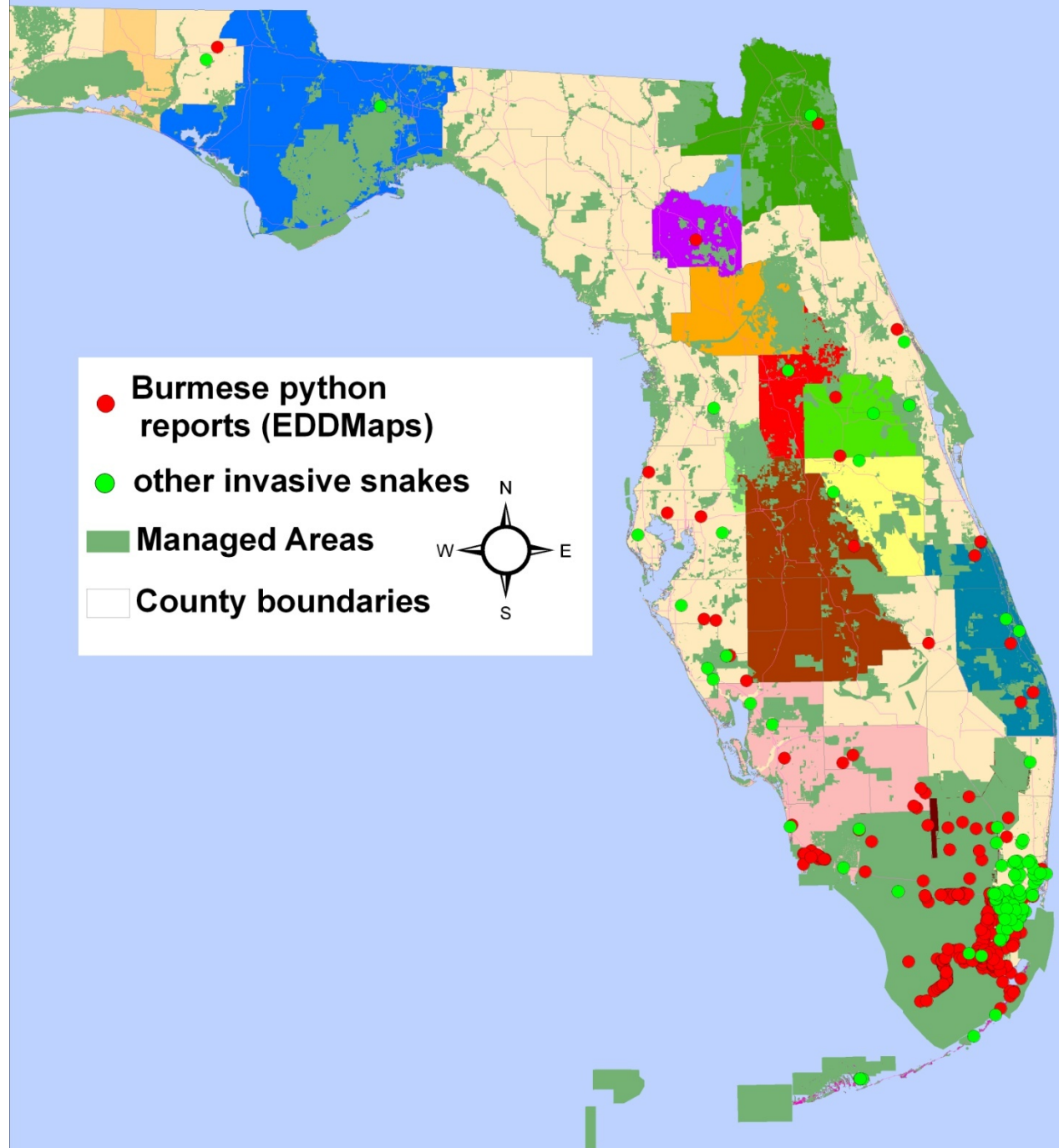


Florida's Python Patrol

“At Your ssssssService”

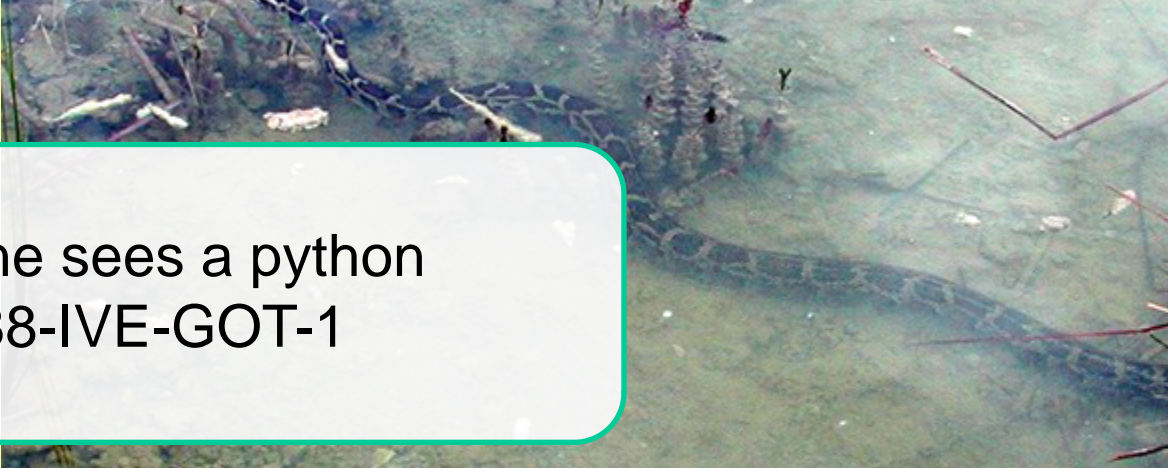



As of
3/21/11




Begun by Florida Keys CISMA 2008 & Expanded to the mainland Oct. 10



- 
- Someone sees a python
 - Calls 888-IVE-GOT-1

- 
- Call gets directed to live person
 - Live person calls local “catcher”

- 
- Local catcher heads out to reporter
 - Catcher catches snake and **SUCCESS!**

Early Detection / Rapid Response



Who's Familiar with Local Wildlife?



Python Hotline 1-888-IVE-GOT-1
(888-483-4681)



Early
Detection /
Rapid
Response

www.IveGot1.org

Florida's Python Patrol

“At Your ssssssService”

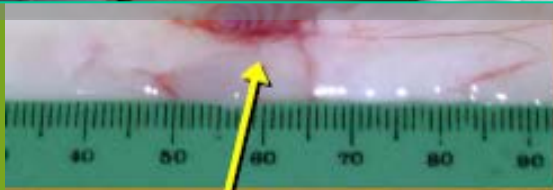


Drop Boxes









rk

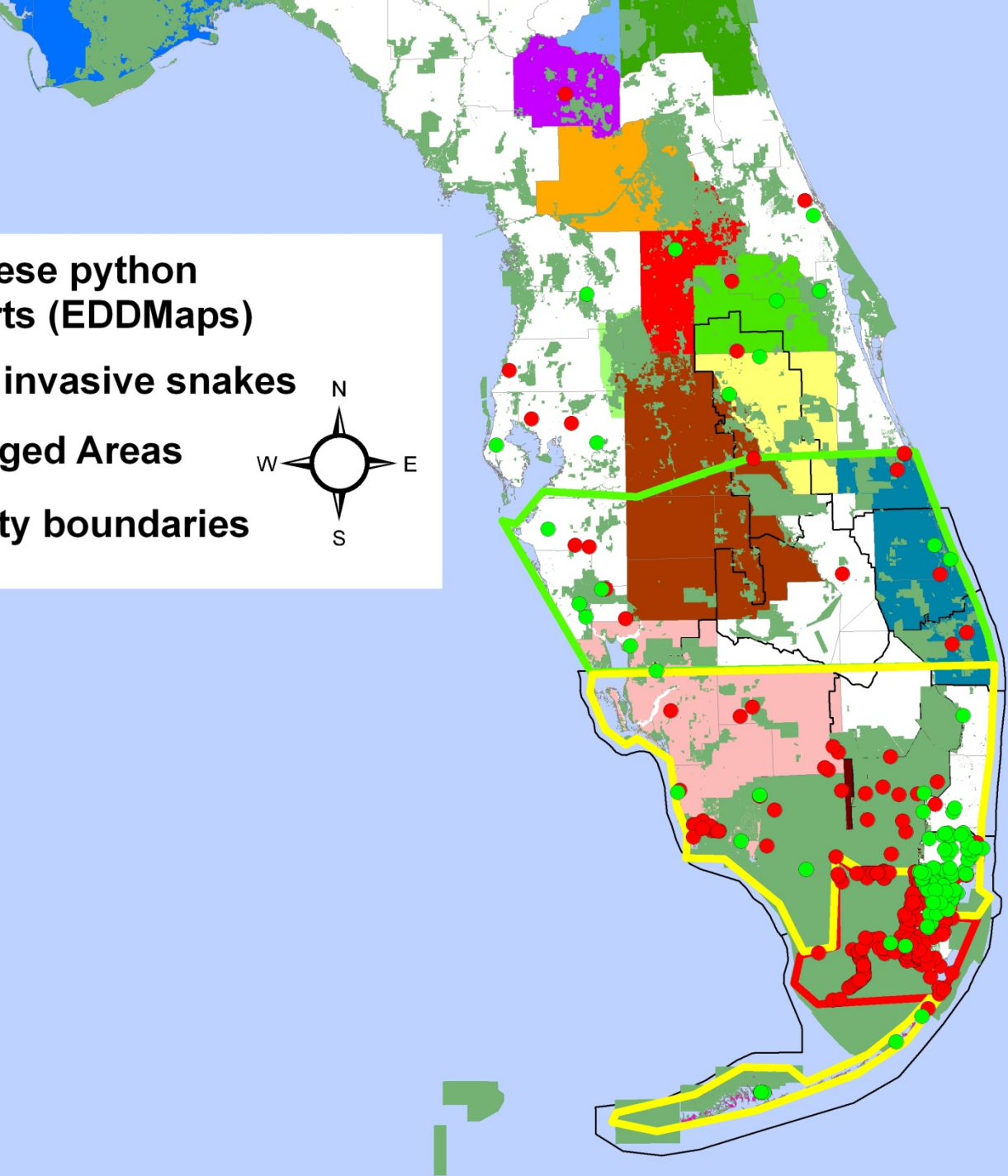
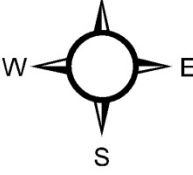


embryo

58 fertile eggs



-  **Burmese python reports (EDDMaps)**
-  **other invasive snakes**
-  **Managed Areas**
-  **County boundaries**



REDDy

Introduced **R**eptile
Early **D**etection
& **D**ocumentation



www.IveGot1.org

OR

1-888-IVEGOT1

Handouts

- ECISMA Invasive Reptile ID deck
- Frank Mazotti's Invasive Reptile ID guide
- 1-888-IVE GOT 1 card
- Datasheets
- Other materials from REDDy (quick ID guides, more on individual species), latest ENP update

3 trainings at Everglades NP

38 staff trained





July 2010: FWC sets rules for conditional species:

\$100 annual license fee to possess

Reptile microchipped

Caging requirements

PERMIT REQUIRED



Evolution of a hotline



- Message OR live answer via Monroe Sheriff's office
- OR live answer via FWC S. FL call center
- OR get live answer during certain hours
- Message direction
- Invasive fish reports

Coming up...

- Responder trainings
- Individual permit process
- Call and response database
- Reporter outreach

REDDY

Introduced **R**eptile
Early **D**etection
& **D**ocumentation



www.IveGot1.org

OR

1-888-IVEGOT1

Questionsss?

Cheryl Millett
millett@tnc.org

The Nature
Conservancy



Protecting nature. Preserving life.™