

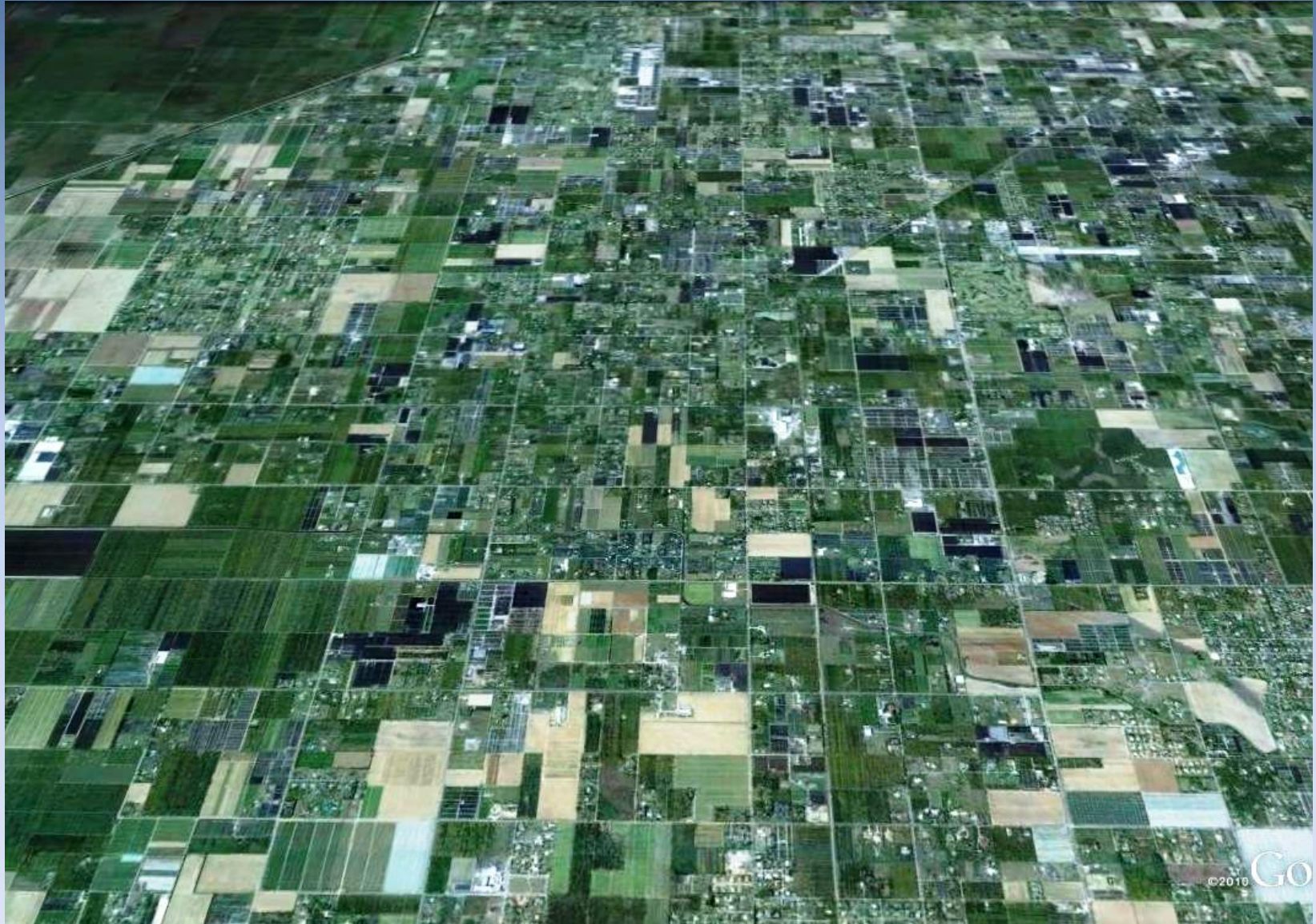


Everglades Cooperative Invasive
Species Management Area

Mikania micrantha: *A Perfect Mess*



Redland Agricultural Area



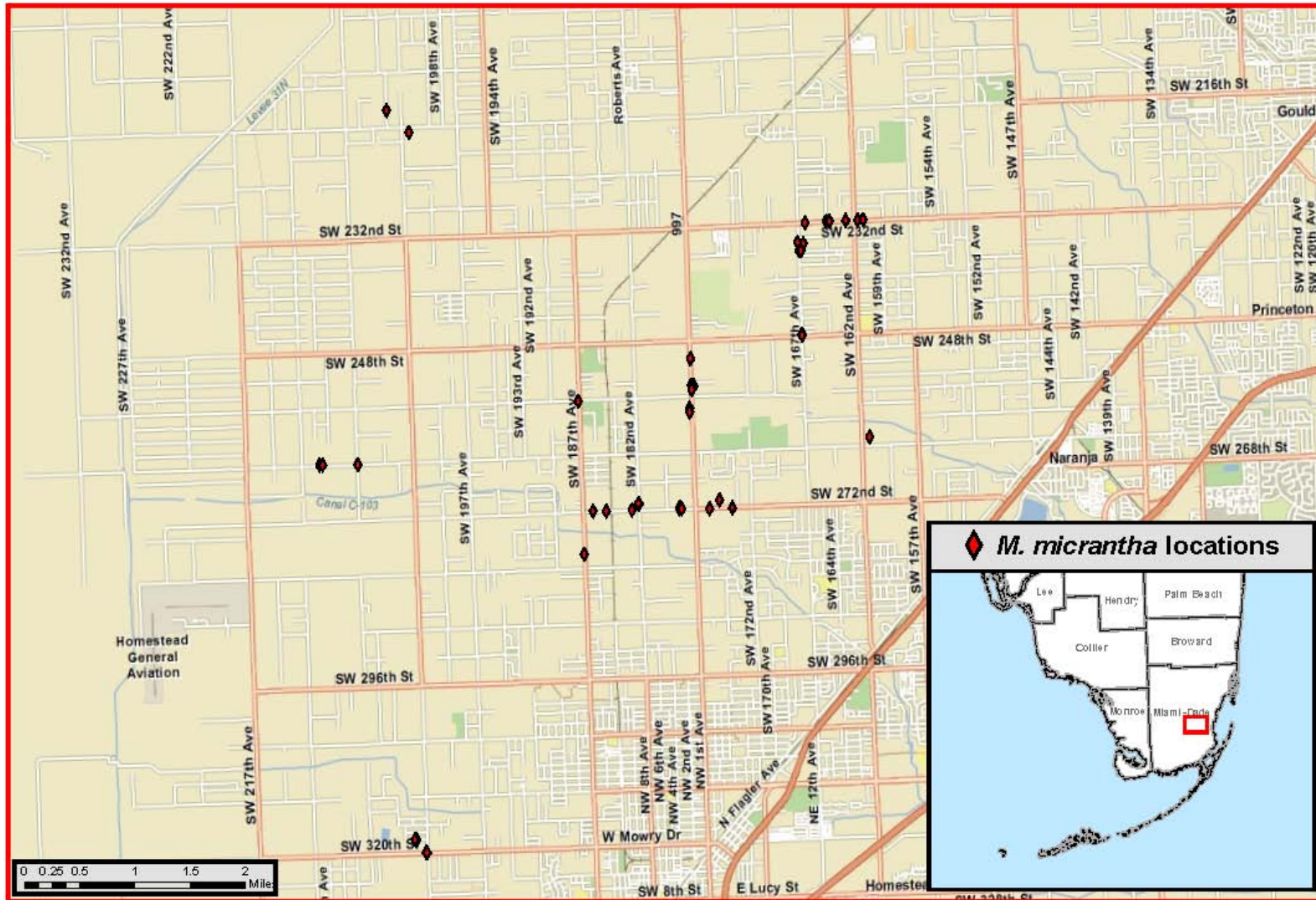
2011 Everglades Invasive Species Summit



EVERGLADES CISMA



Mikania micrantha Positive Finds in Florida



Created By: G. Sager, TSMITH, W. Dixon
CAPS - Cooperative Agricultural Pest Survey
May 14, 2010



GIS by ArcView 10.0.0.0

2011 Everglades Invasive Species Summit



EVERGLADES CISMA

2011 Everglades Invasive Species Summit



EVERGLADES CISMA

2011 Everglades Invasive Species Summit



EVERGLADES CISMA





2011 Everglades Invasive Species Summit



EVERGLADES CISMA

2011 Everglades Invasive Species Summit



EVERGLADES CISMA

2011 Everglades Invasive Species Summit



EVERGLADES CISMA



2011 Everglades Invasive Species Summit



EVERGLADES CISMA

2011 Everglades Invasive Species Summit



EVERGLADES CISMA

2011 Everglades Invasive Species Summit



EVERGLADES CISMA

2011 Everglades Invasive Species Summit



EVERGLADES CISMA

2011 Everglades Invasive Species Summit



EVERGLADES CISMA





2011 Everglades Invasive Species Summit



EVERGLADES CISMA

2011 Everglades Invasive Species Summit



EVERGLADES CISMA

2011 Everglades Invasive Species Summit



EVERGLADES CISMA

2011 Everglades Invasive Species Summit



Everglades Cisma
Cooperative Invasive Species Management Area
www.evergladescisma.org



PERMISSION TO TREAT MIKANIA MICRANTHA ON PRIVATE PROPERTY

About *Mikania micrantha*

See Attached Noxious Weed Alert: ***Mikania micrantha***

About this Volunteer Rapid Response initiative

To help prevent the spread of ***Mikania micrantha*** into parks and natural areas we are asking people who have ***Mikania micrantha*** on their property to allow the entrance of Everglades Cisma volunteer crews to remove and/or treat it with herbicide (Roundup). The volunteer crews will be as careful as possible to target their application only upon ***Mikania micrantha*** and to minimize any non-target damage to surrounding vegetation.

About Everglades Cisma

Everglades Cisma was created to formalize cooperation among land management agencies to improve the effectiveness of exotic species control by sharing resources across borders through a memorandum of understanding with the ultimate goal of helping to ensure the success of the Comprehensive Everglades Restoration Plan. Rapid response initiatives like this one help prevent the establishment of new invasive species

General Release of Liability, Waiver of Claims, and Hold Harmless Agreement

The undersigned fully agrees to allow the entrance of ECISMA volunteer crews onto their property to access, remove and treat ***Mikania micrantha*** and to release and hold harmless the Everglades Cisma volunteer crews from any and all liability or responsibility whatsoever, associated with the removal and treatment of ***Mikania micrantha*** from their property. The undersigned also acknowledges that they have read and understand this agreement and that they voluntarily agree to be bound by it.

Name _____ Signature _____

Address _____ Date _____



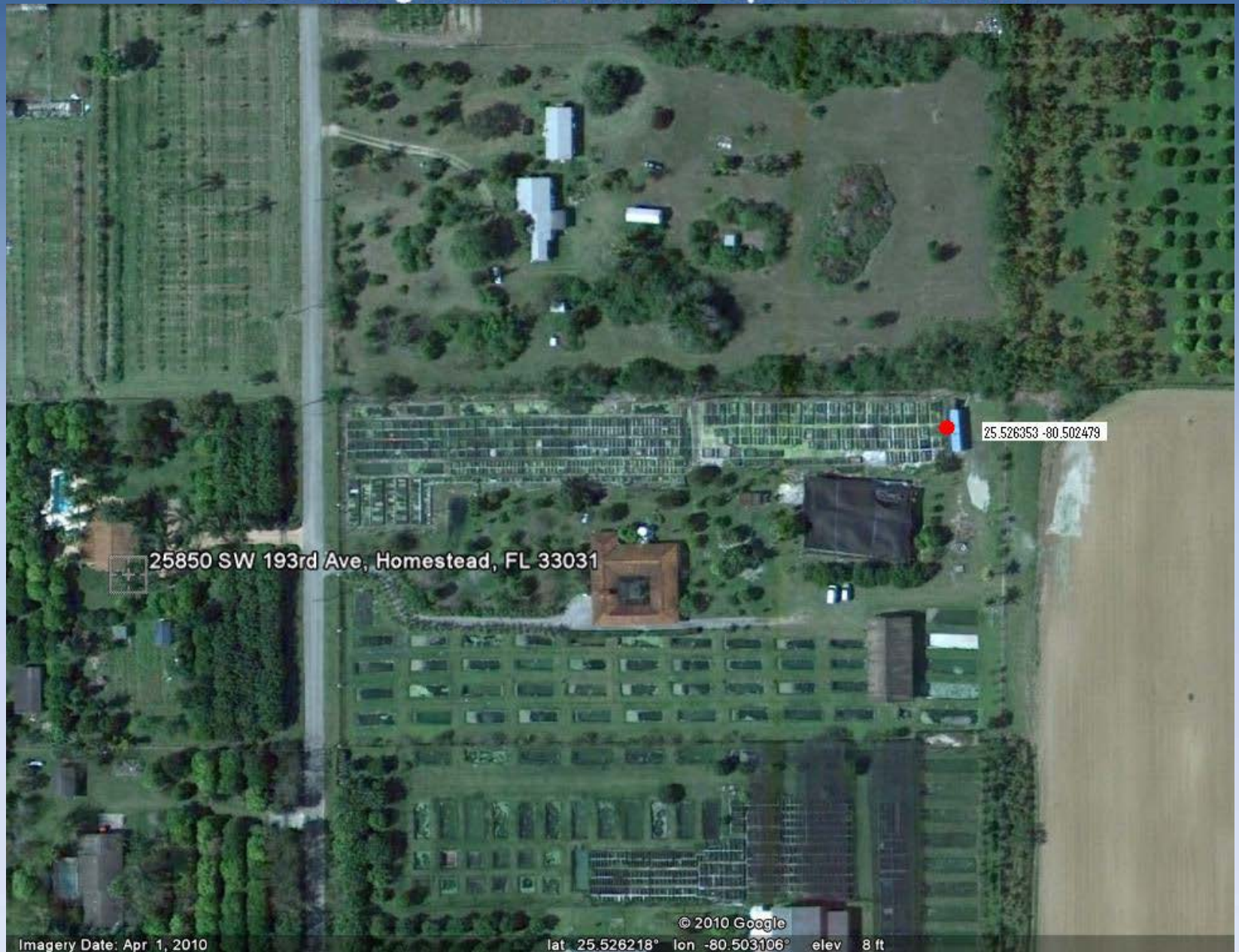
US Army Corps
of Engineers



Everglades Cisma is a formal partnership between federal, state, and local government agencies, tribes, individuals, and various interested groups that manage invasive species.

EVERGLADES Cisma

2011 Everglades Invasive Species Summit



25850 SW 193rd Ave, Homestead, FL 33031

25.526353 -80.502479

© 2010 Google

Imagery Date: Apr 1, 2010

lat 25.526218° lon -80.503106° elev 8 ft

EVERGLADES CISMA

2011 Everglades Invasive Species Summit



EVERGLADES Cisma

2011 Everglades Invasive Species Summit



EVERGLADES CISMA

2011 Everglades Invasive Species Summit



EVERGLADES CISMA

2011 Everglades Invasive Species Summit



EVERGLADES CISMA

2011 Everglades Invasive Species Summit



EVERGLADES CISMA



2011 Everglades Invasive Species Summit



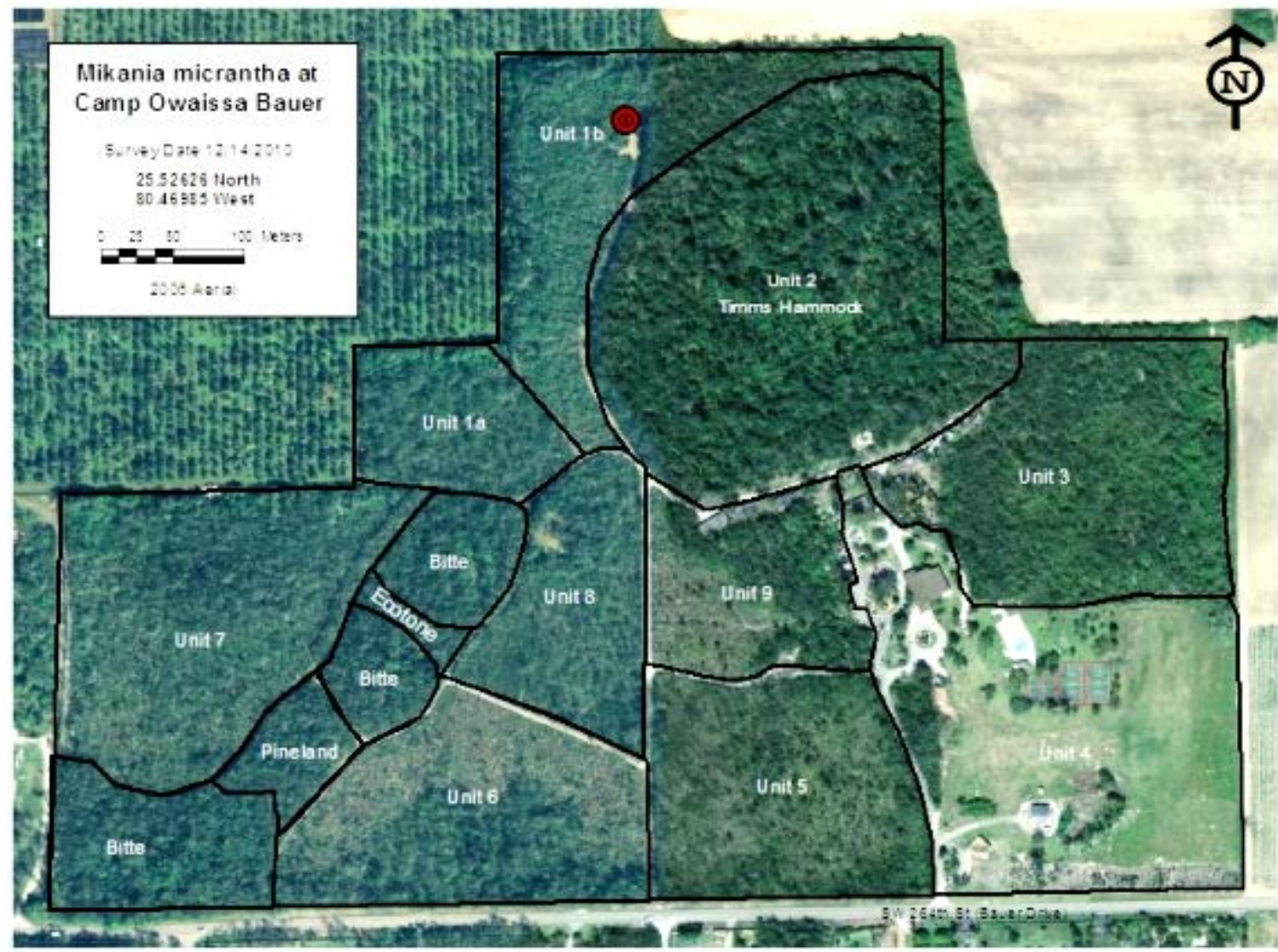
EVERGLADES CISMA

2011 Everglades Invasive Species Summit



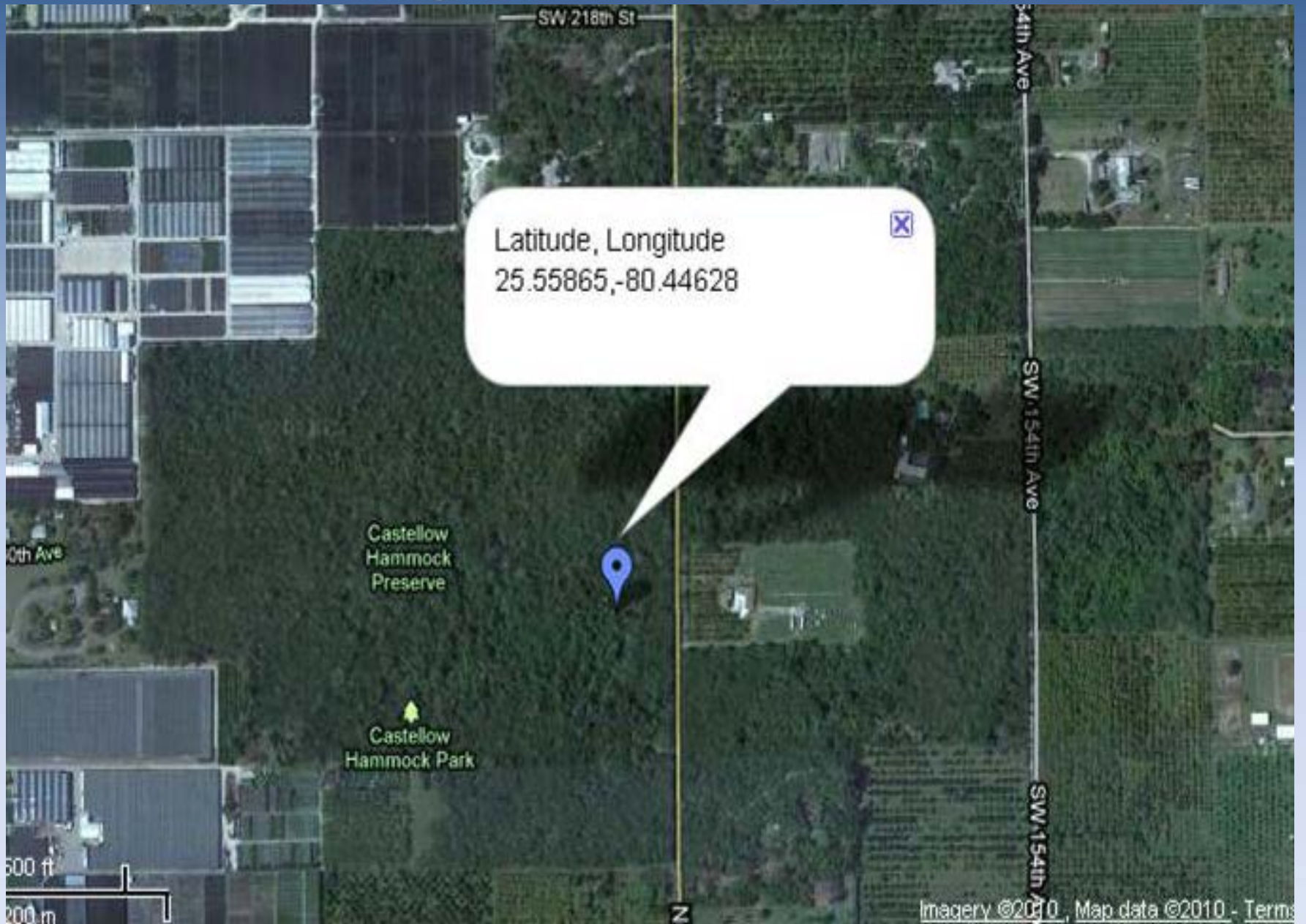
EVERGLADES CISMA

2011 Everglades Invasive Species Summit



JR 12/14/10

2011 Everglades Invasive Species Summit



EVERGLADES CISMA



2011 Everglades Invasive Species Summit



EVERGLADES CISMA

2011 Everglades Invasive Species Summit



EVERGLADES CISMA



2011 Everglades Invasive Species Summit



EVERGLADES CISMA



Possley

Conclusions:



Mikania micrantha is still apparently confined to approximately a 10 square mile area in the Redland Agricultural Area of Homestead, Florida

It has been present in that area for at least 5 years based on the new record

It is growing on private property; agricultural, residential and two county natural areas

Mikania micrantha could be eradicated in five years if:

A multi-agency cooperative agreement is created

An appropriate amount of funding is dedicated to that end
(approximately \$500,000.00)

A coordinated effort to map the extant *M. micrantha*, during
the flowering season is initiated

A contractor is employed to chemically treat and
mechanically remove known infestations of *M.*
micrantha wherever it is located for five years

Public cooperation is sought to treat or allow contractor to
treat *M. micrantha* on private lands

Surveys are initiated and or continue in other agricultural
areas in Miami-Dade and South Florida to ensure there
are no other infestations

Is Eradication Possible?





Everglades Cooperative Invasive
Species Management Area

2011 Everglades CISMA Newsletter

Available at the door
and at

evergladescisma.org