

# Turning the corner: management for the Giant African Snail, *Lissachatina fulica*, from 2011 – 2013.

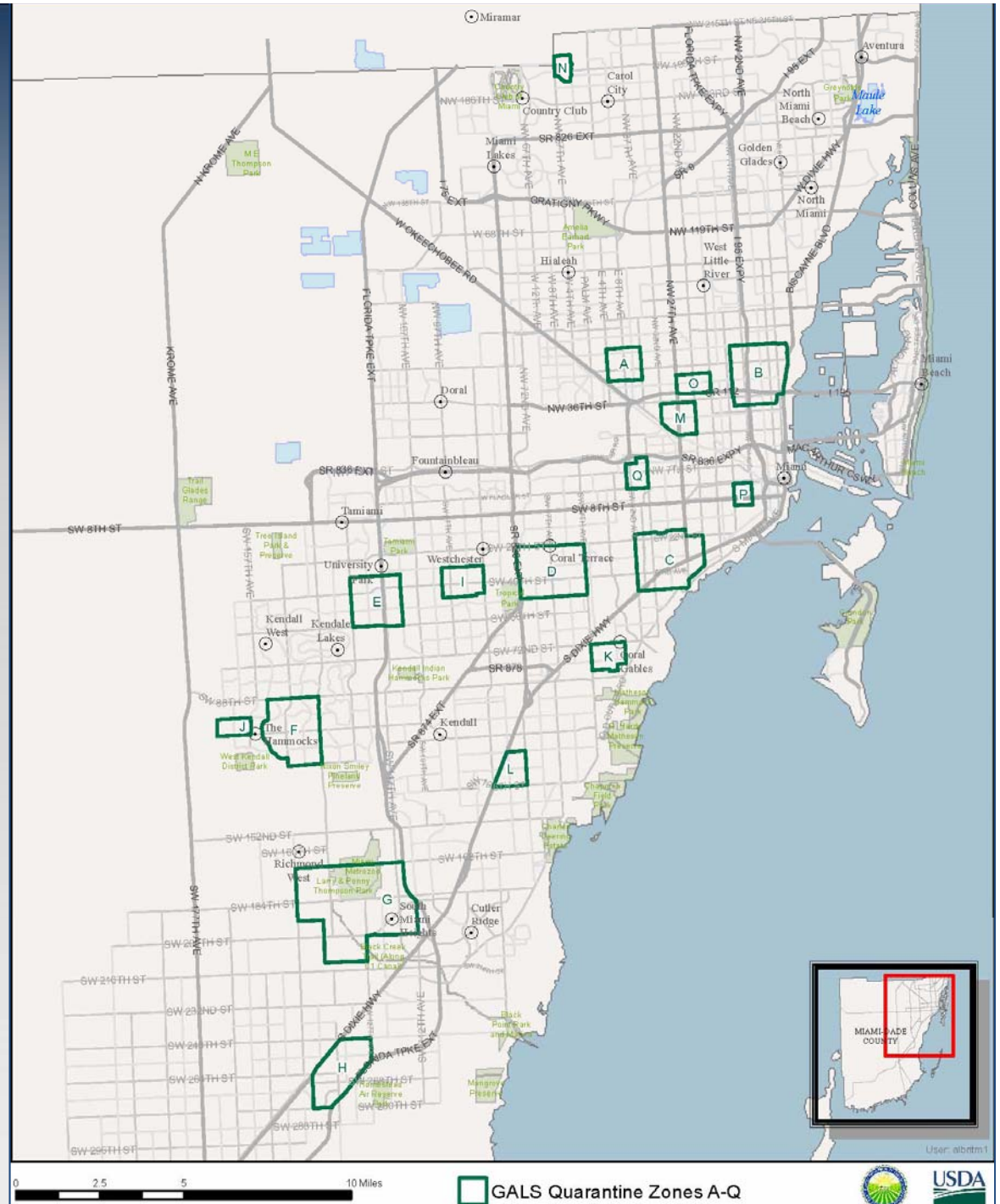
Andrew Derksen, Tracy Wright, Julio  
Rodriguez, Eduardo Varona



EVERGLADES CISMA

# June 13<sup>th</sup>, 2013

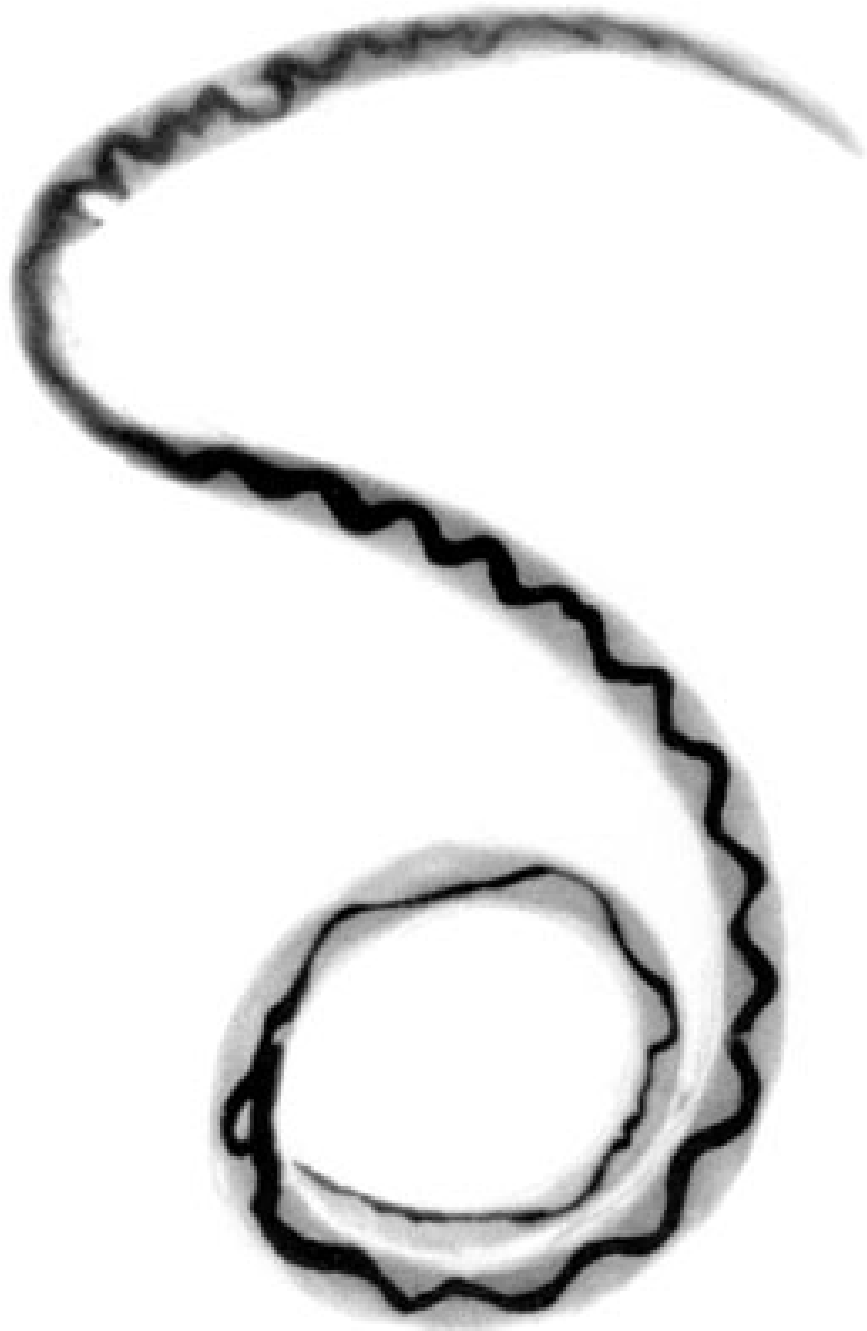
- 21 infestations
  - Last in DEC 2012
- Staff of 50
- Totals
  - 570 positive properties
  - 35,957 treated properties
  - 46,979 surveyed properties
  - 125,808 snails collected



# Rat Lungworm

- Confirmed in October 2012
- 5 positive core areas
  - Further research to explore distribution within cores
  - Increased sampling in other cores

EVERGLADES CISMA



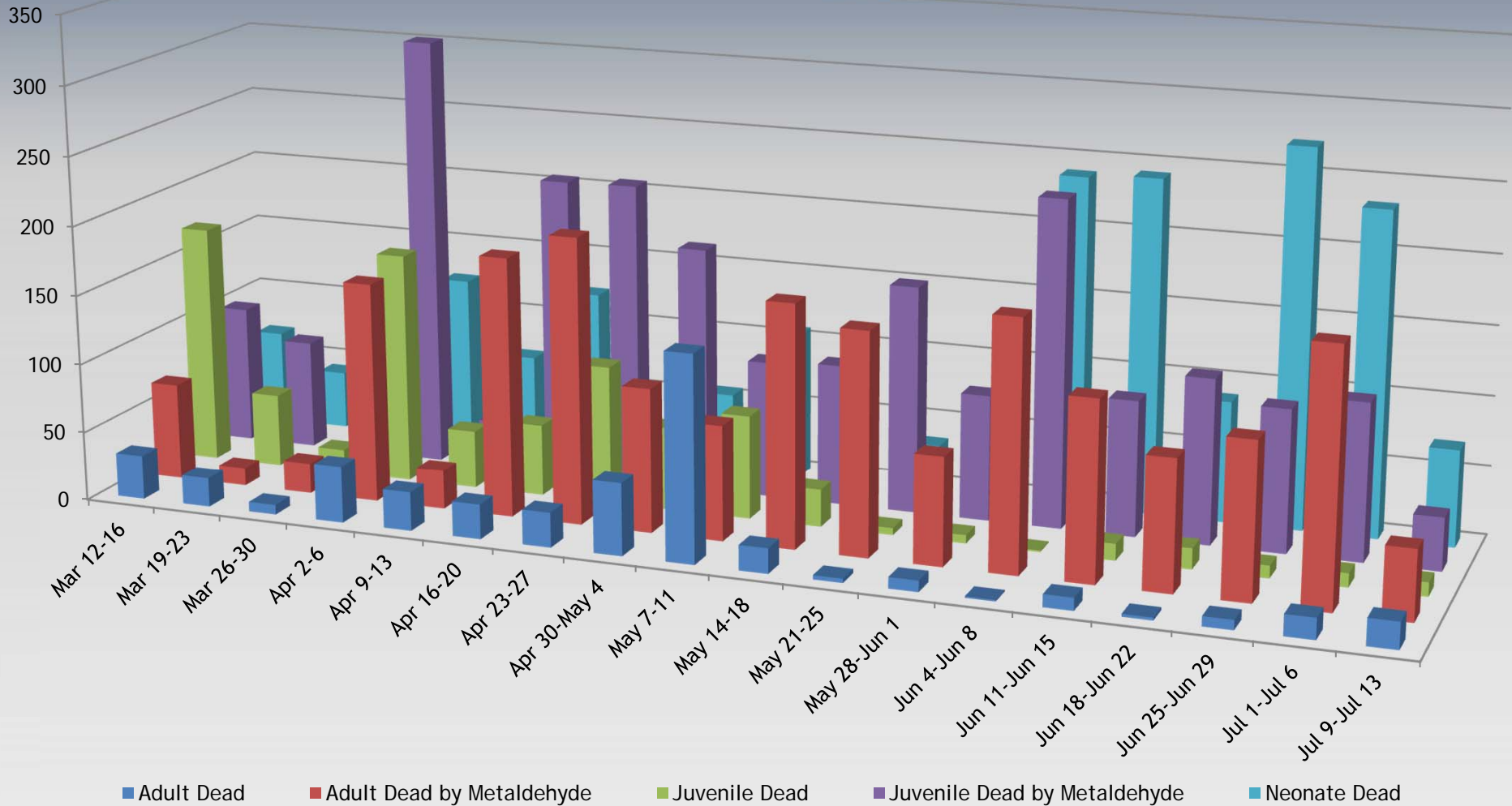
Lindo et al. 2002

# Survey Process

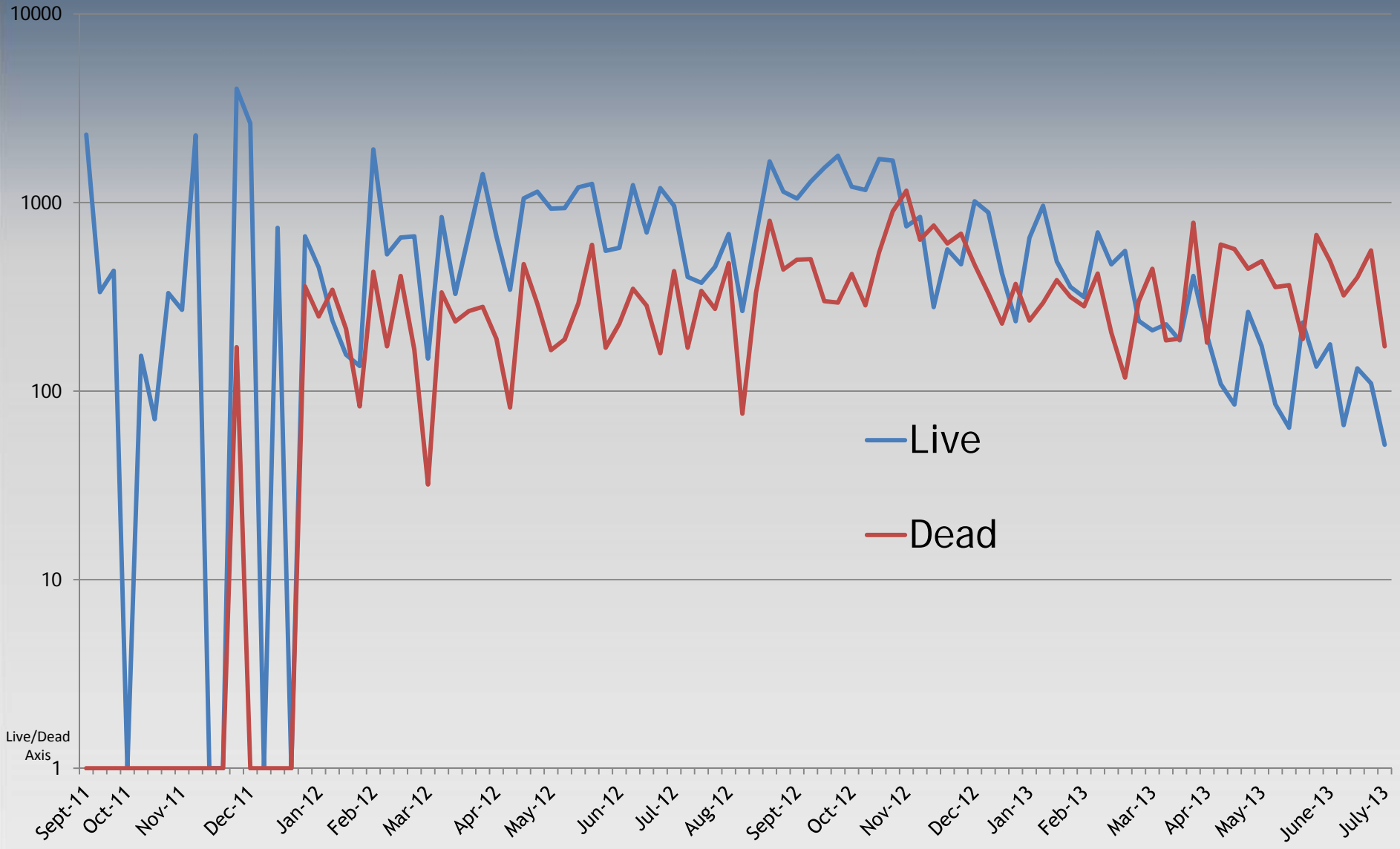
- Twice monthly site visit
- Remove small yard debris
- Remove snails
  - # per property
  - % mortality
  - Age structure
    - Egg mass
      - # eggs
      - % viable embryos
    - Shell length
- Treat site with metaldehyde
  - Recently approved



# Mortality Comparison: Metaldehyde vs [other methods]



# Log Specimen Live/Dead Since Inception



\*  
\*Note: In order to make the graph clearer, we have removed the 31,000 retroactive snails added to the total count.

# Other Trends

- Mean size of collected shell has decreased
- Possible sublethal effects
  - Fecundity
  - Egg viability
- Snails have begun to “avoid” some bait types



# Under New Management: Bill Torres



- Former DEP
- Weed Management
- Willing to engage!
  - Collaborations
  - Cross-training of staff

**EVERGLADES CISMA**



# WANTED

## GIANT AFRICAN SNAIL



**LOOK FOR THEM! REPORT THEM!**  
**888-397-1517**

A major landscape and agricultural pest, even eats stucco on homes

Public health threat - known to carry rat lungworm  
that may cause meningitis in humans

Able to reproduce rapidly - one snail can lay 1,200 eggs in a year  
Can grow to up to 8 inches in length - no natural enemies

**We need your help to stop this pest!**

[www.freshfromflorida.com/pi](http://www.freshfromflorida.com/pi)



## Hotline: Miami

- 1-888-397-1517
- [dpihelpline@freshfromflorida.com](mailto:dpihelpline@freshfromflorida.com)

## EVERGLADES CISMA

# Circle of Life?



Questions?