

ECISMA Plant EDRR 2014



Everglades Cooperative Invasive
Species Management Area

EVERGLADES Cisma

Dalchampia Workdays



EVERGLADES CISMA

Mikania Workdays

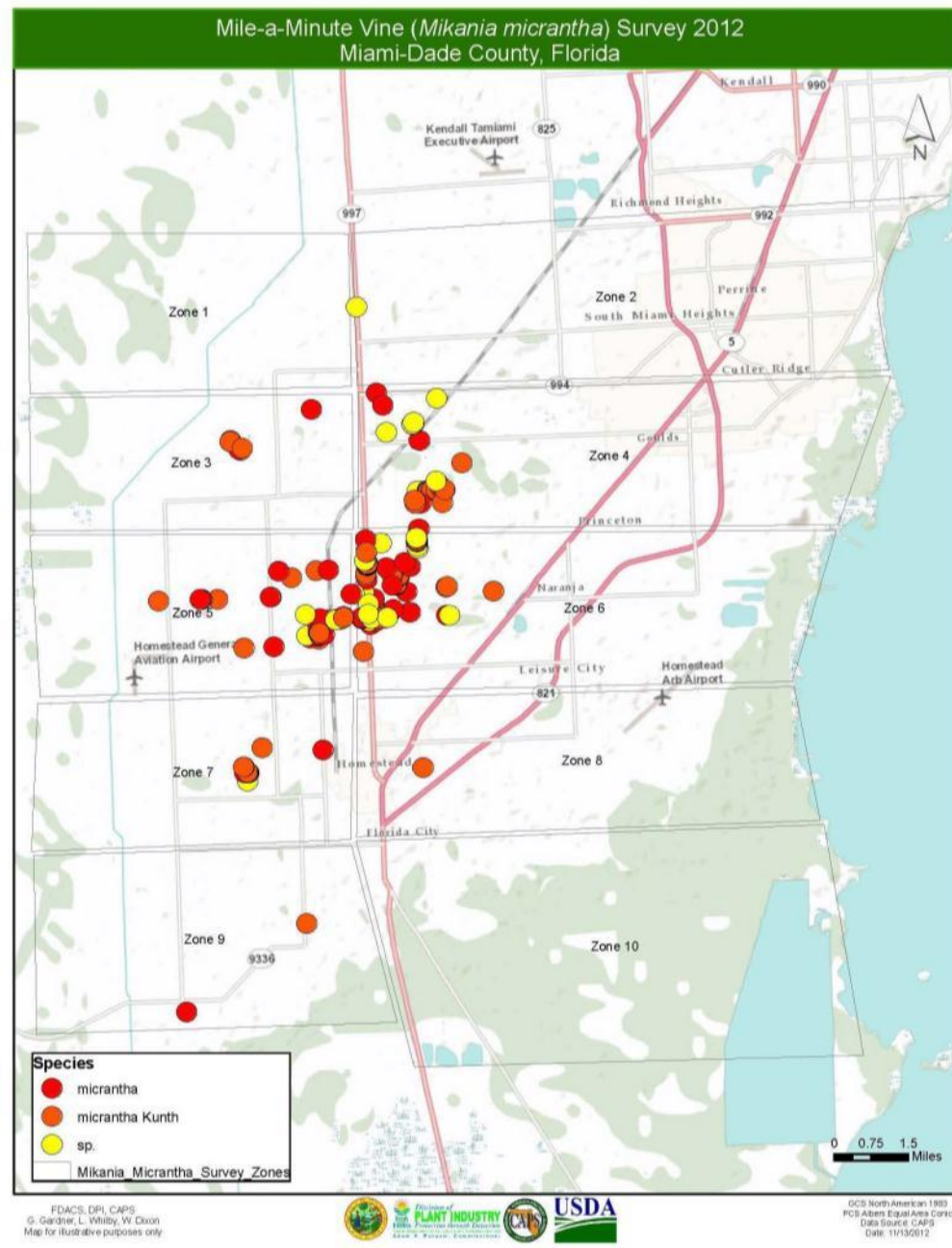


EVERGLADES CISMA



EVERGLADES CISMA

FIGURE 1 - *Mikania micrantha* Project Map:



Redwing Workday



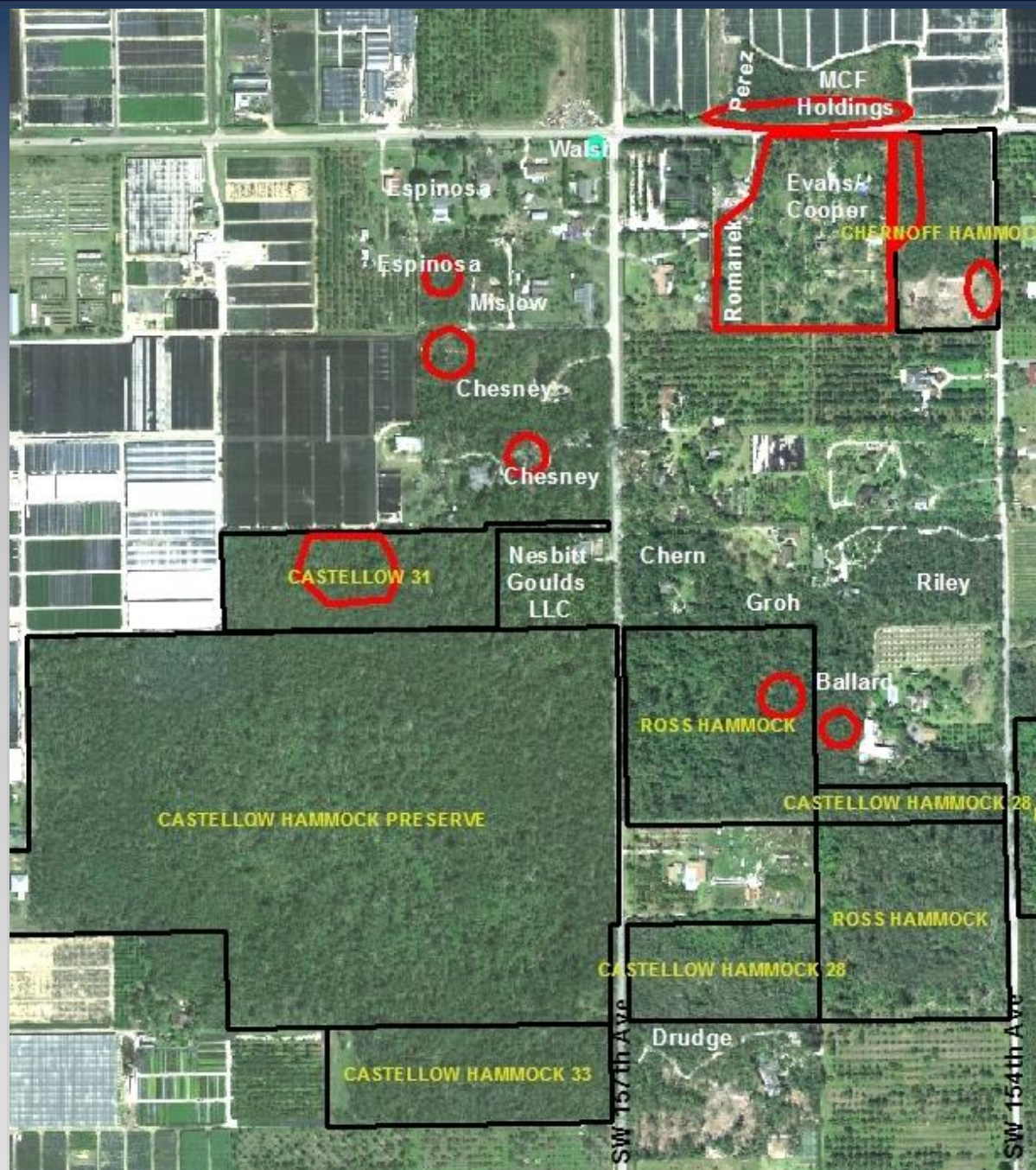
EVERGLADES CISMA



EVERGLADES CISMA



EVERGLADES CISMA

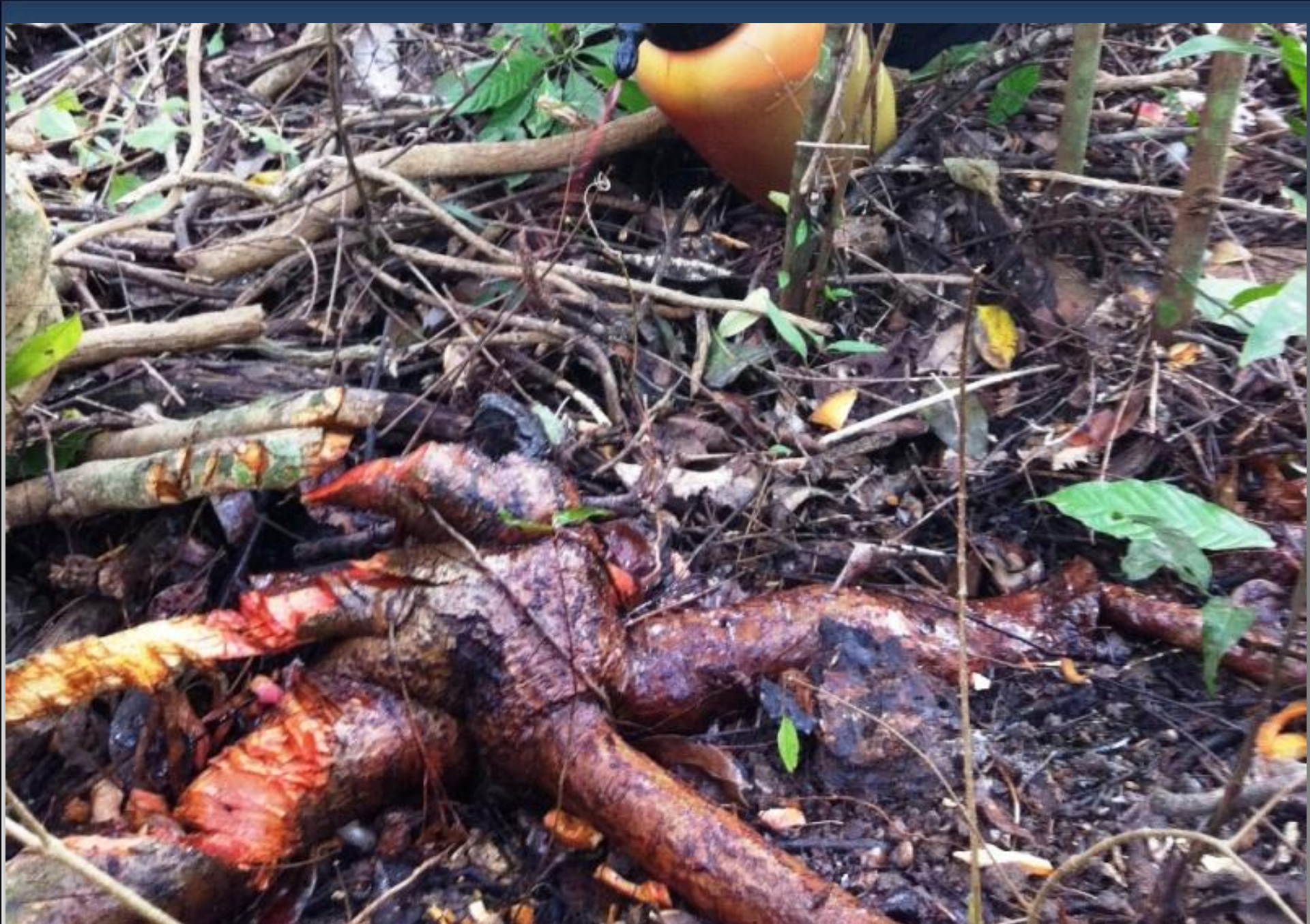




EVERGLADES CISMA



EVERGLADES CISMA



EVERGLADES CISMA



I'M NOT DEAD
YET YOU
BASTARD!

2014 *Lumnitzera* Workdays



EVERGLADES CISMA



EVERGLADES CISMA



EVERGLADES CISMA



EVERGLADES CISMA

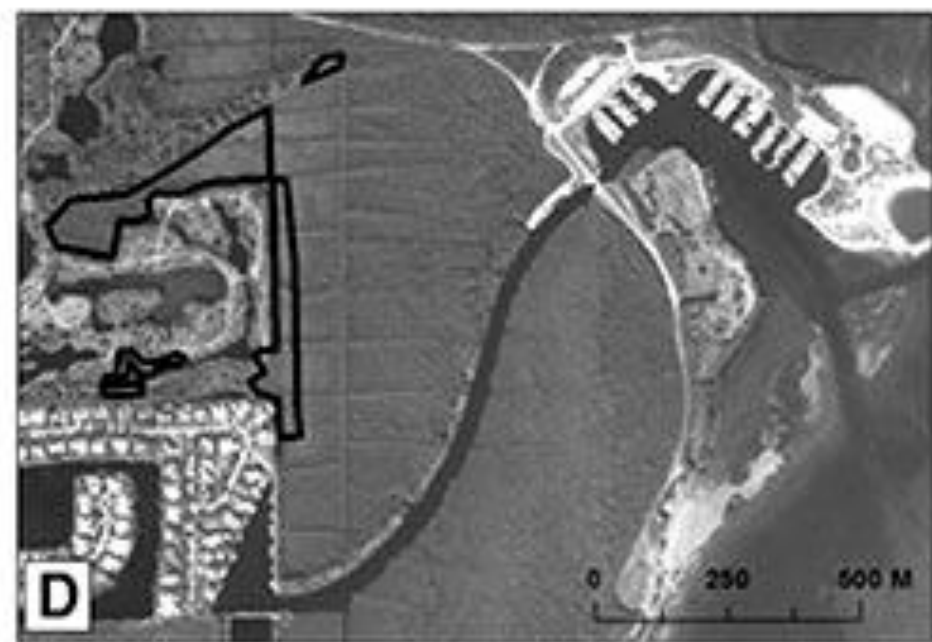


EVERGLADES CISMA

2014 *Bruguiera* Workdays



EVERGLADES CISMA



EVERGLADES CISMA



EVERGLADES CISMA



EVERGLADES CISMA



EVERGLADES CISMA



EVERGLADES CISMA



EVERGLADES CISMA



EVERGLADES CISMA



EVERGLADES CISMA



EVERGLADES CISMA



EVERGLADES CISMA



EVERGLADES CISMA



EVERGLADES CISMA



EVERGLADES CISMA



EVERGLADES CISMA

This Week in Horticulture: Red-flowered mangrove (*Bruguiera gymnorrhiza*):
A Follow-up Report David Jones, Curator of Living Collections



Shown above is the seven member interagency team who assisted the garden resample and manage the population of red-flowered mangroves thriving in the mangrove preserve, in late May. The piles of green debris next to the group are what remain of *Bruguiera* after measuring and destroying (by uprooting, cutting, and/or herbiciding) all 85 trees, saplings and seedlings found in the preserve.

EvergladesCISMA.org



Everglades Cooperative Invasive
Species Management Area

EVERGLADES CISMA