

Report on Operational Activities for Nonnative Wildlife

Jenny Ketterlin Eckles
Florida Fish and Wildlife Conservation
Commission



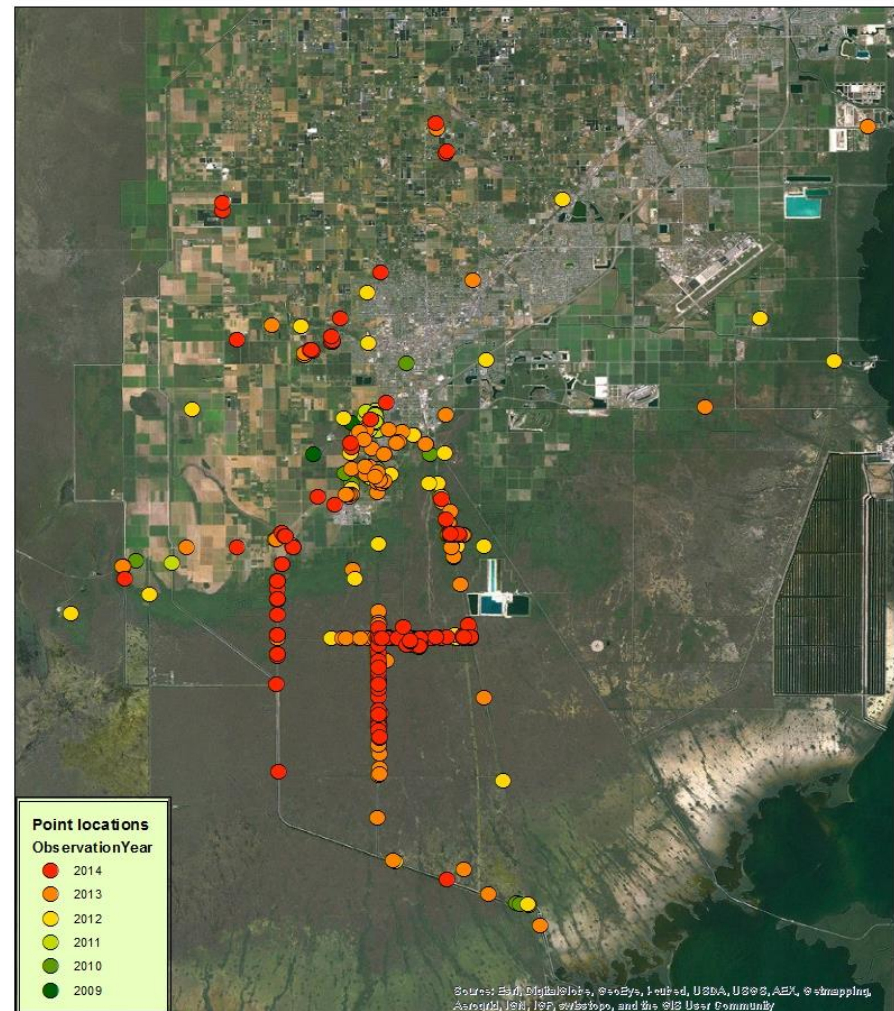
Argentine black and white tegus (*Salvator merianae*)

- FWC/UF/Zoo Miami coordinating trapping efforts in natural areas with NPS/USGS
- FWC and Venom One responding in urban areas
- 180+ trapped during last season

UF/FWC/M-D County efforts:

- 30-32 live traps
- 17-22 camera traps
- 252 removed
 - Trap lines = 162
 - Residential trapping = 59
 - Other = 31
- Three females tracked by UF
- Moving to dispersal mode

Argentine black and white tegu
FWC Nonnative Species Database
July 22, 2014



Camera traps



Legend

● Camera Trap



0 1 2 4 Kilometers

Live traps



Legend

● Live Traps



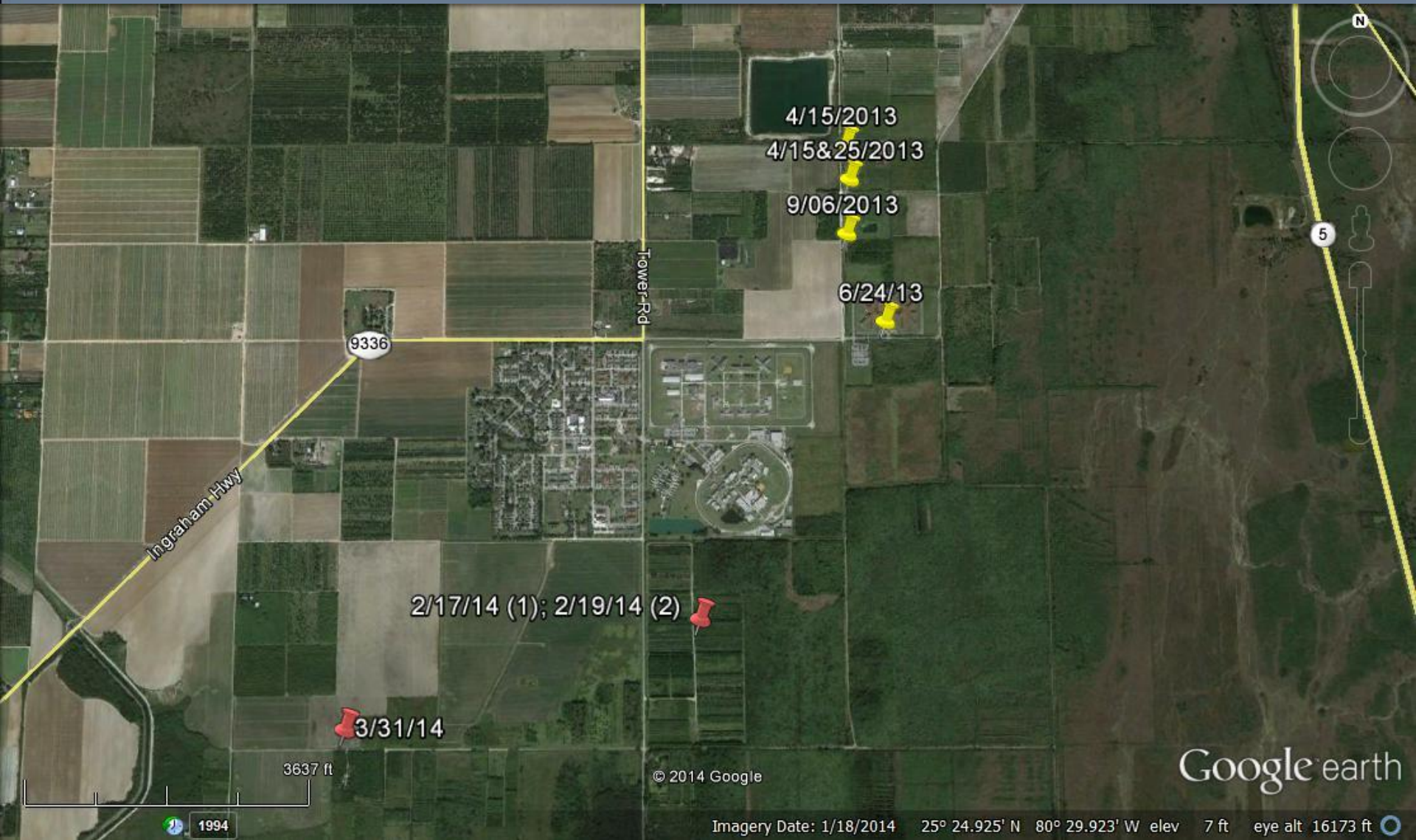
0 0.375 0.75 1.5 Kilometers

Gold tegus (*Tupinambis teguixin*)

- Three gold tegus removed prior to 2013
- Six gold tegus removed in 2013
- Four gold tegus removed in 2014
- Two YOY or yearlings from 2013
- All from private trappers on private property



Recent gold tegu locations



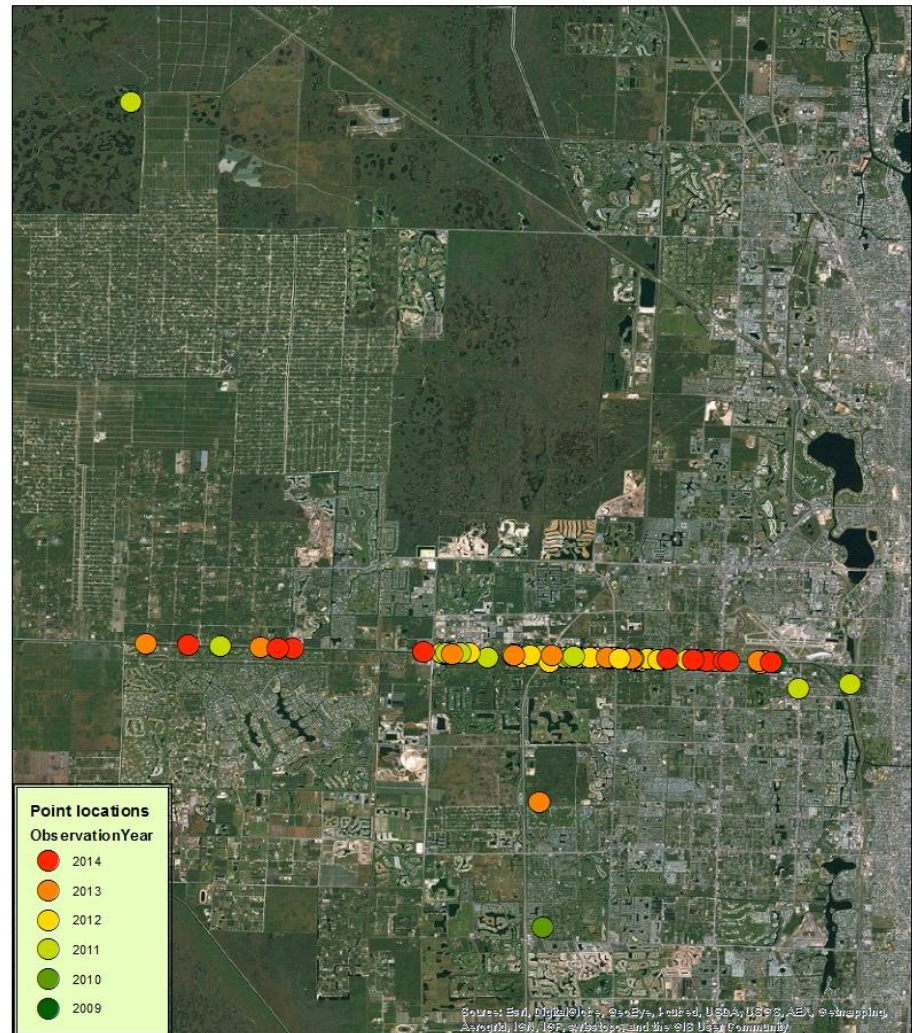
Nile monitor surveys from August 2013 through June 2014

	Number of surveys	Number of observations	Number removed	Sex ratio M:F
C-51 Canal east of SR7/441	15	10	7	3:4
C-51 Canal west of SR7/441	7	4	2	0:2
Total	22	14	9	3:6

Nile monitors, cont.

- Overall sex ration is 15:16
- Gravid female and one that had recently laid eggs collected in June
- Average clutch size likely 15-20
- Continued confirmed sightings in western Broward
- Efforts will increase in Palm Beach and Broward

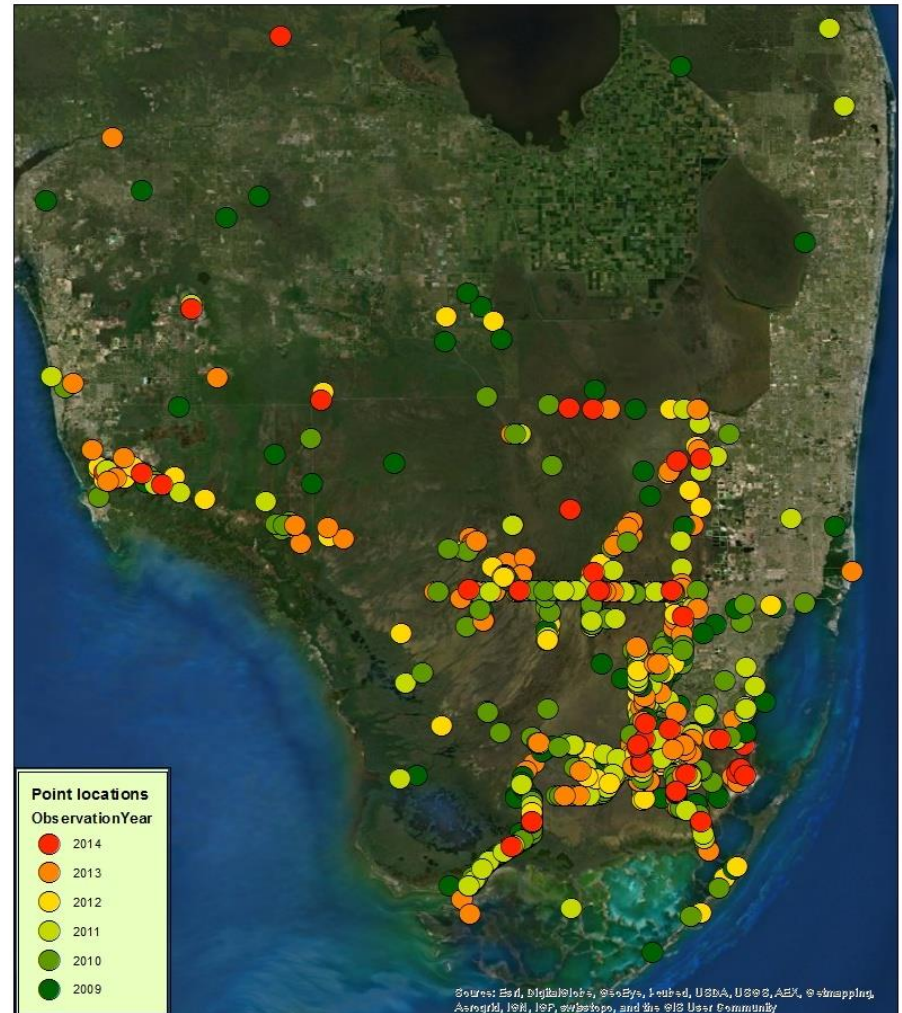
Nile monitor
FWC Nonnative Species Database
July 22, 2014



Burmese pythons

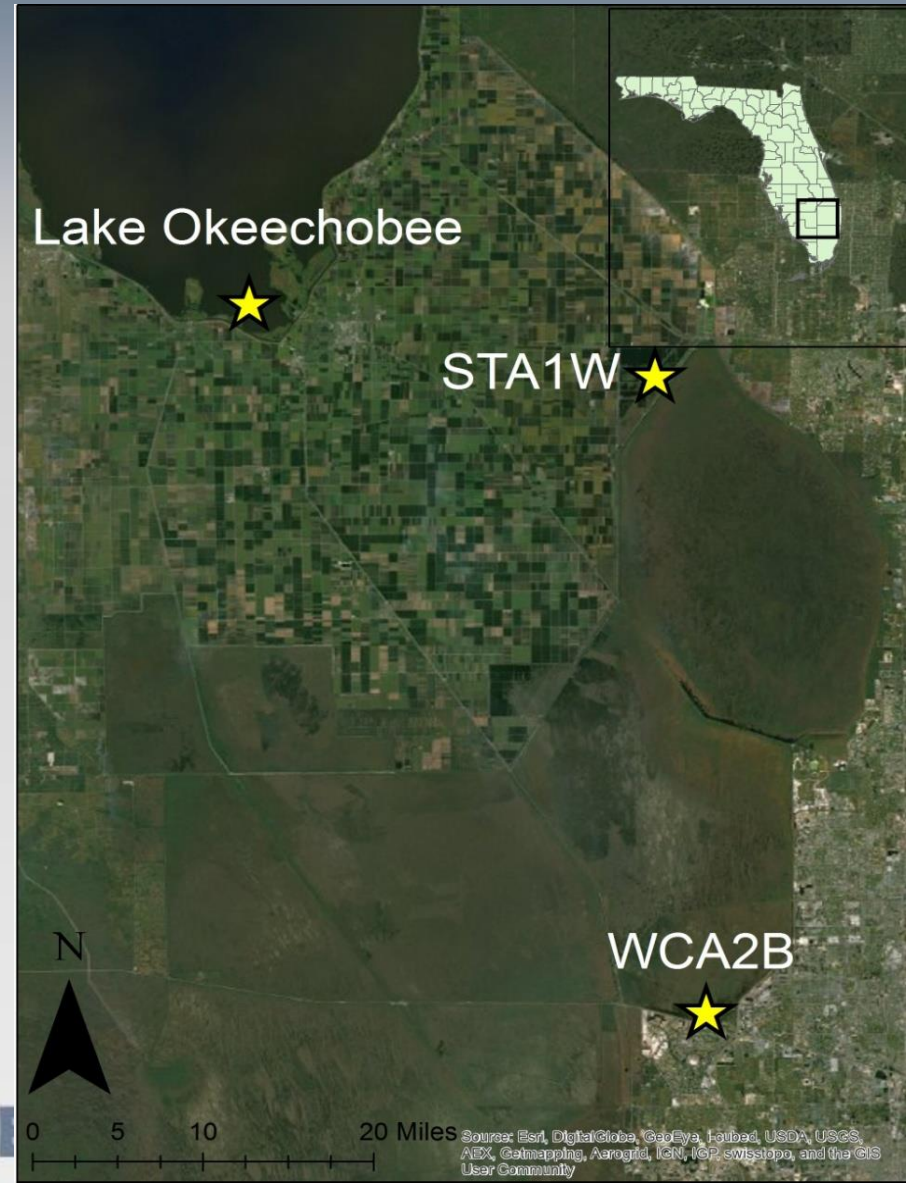
- Number removed on Everglades WMA = 16
- Number removed from District lands = 14
- Other = 74
- Seven permittees removed 32
- Swamp Apes removed 56
- Four sightings along Alligator Alley
- Two removed from tree islands in WCA 3AS

Burmese python
FWC Nonnative Species Database
July 22, 2014



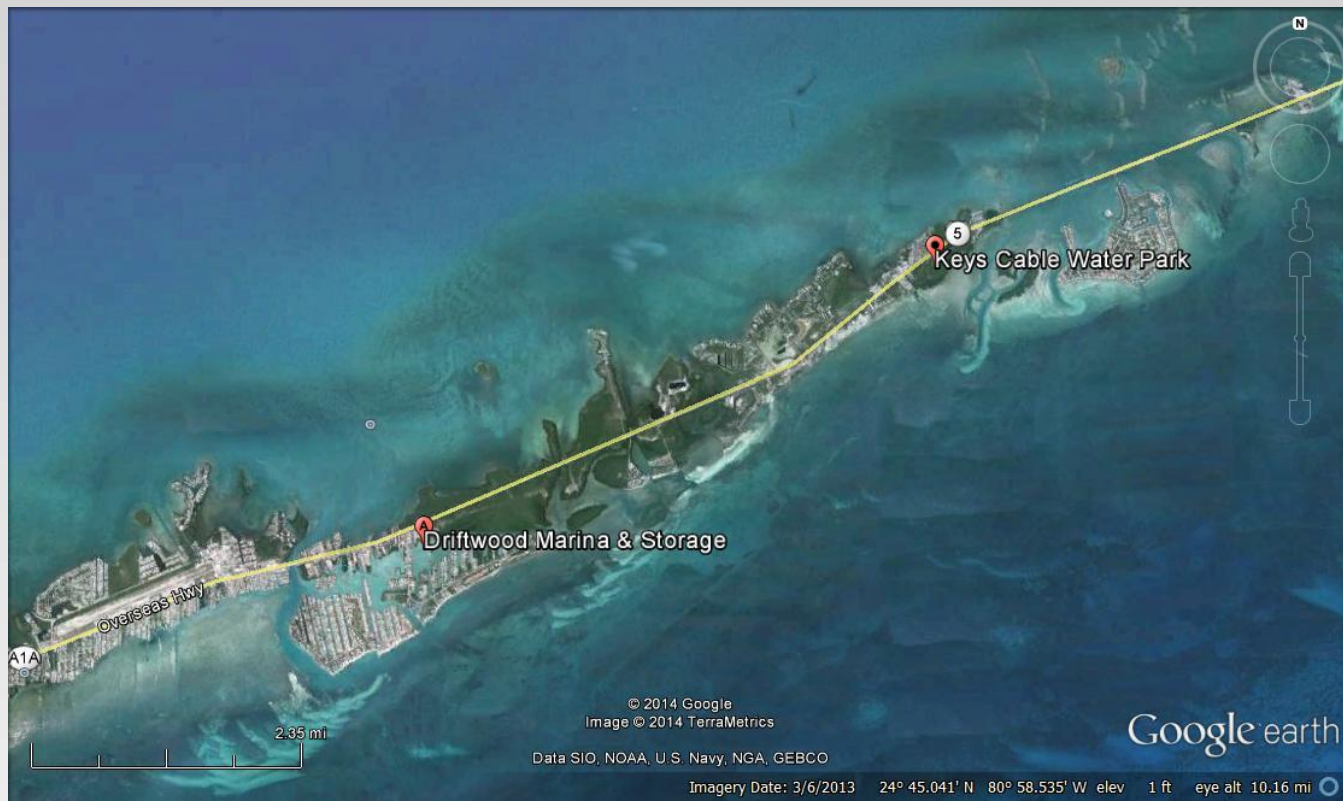
Purple swamphens

- FAU completed diet analysis for 83 swamphens, three different locations
- Most common food item is *Eleocharis cellulosa* (spikerush)
- Some inverts found
- Larger birds in STA1W



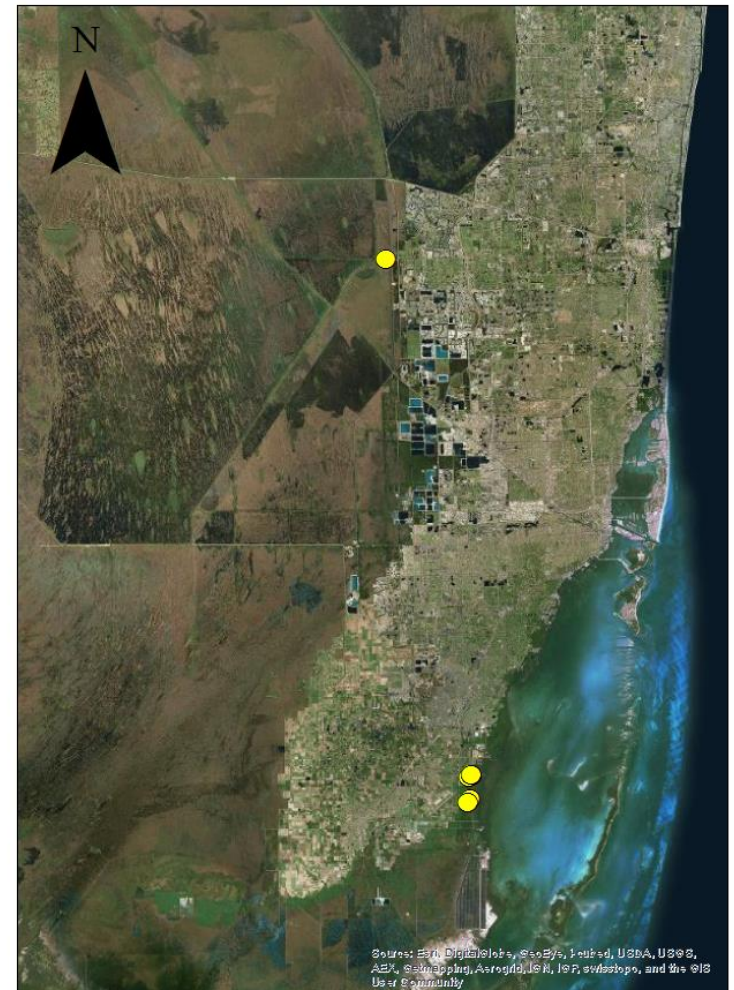
Gambian pouched rats

- Two small-scale trapping events over past year
- Mailing conducted last month → No reports in core
- Observations from marina and water park
- Increased trapping in next year using USDA



Caimans

- 8 surveys
- Locations: Near L-31E in Miami-Dade Co., Holiday Park in Broward County
- 27 removed
- Odd singletons in Broward and Palm Beach Counties



0 5 10 20 Miles

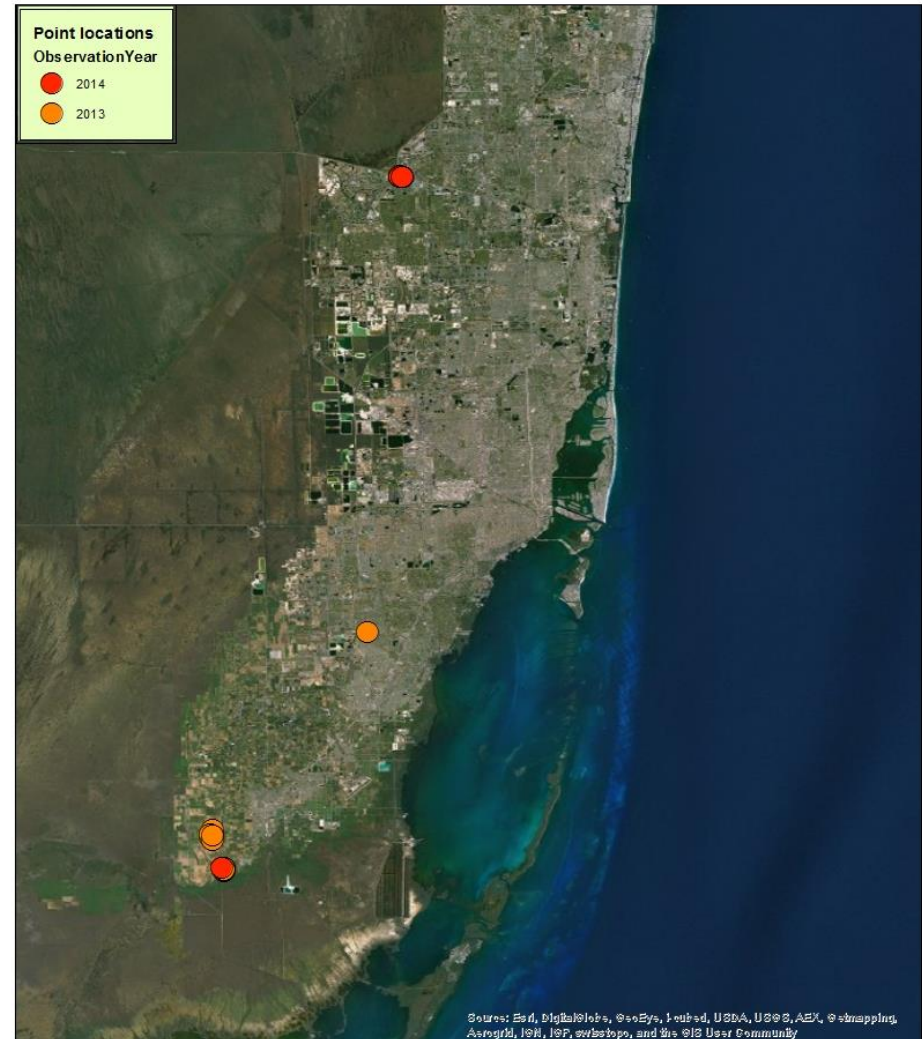
Legend

● Caiman Removed

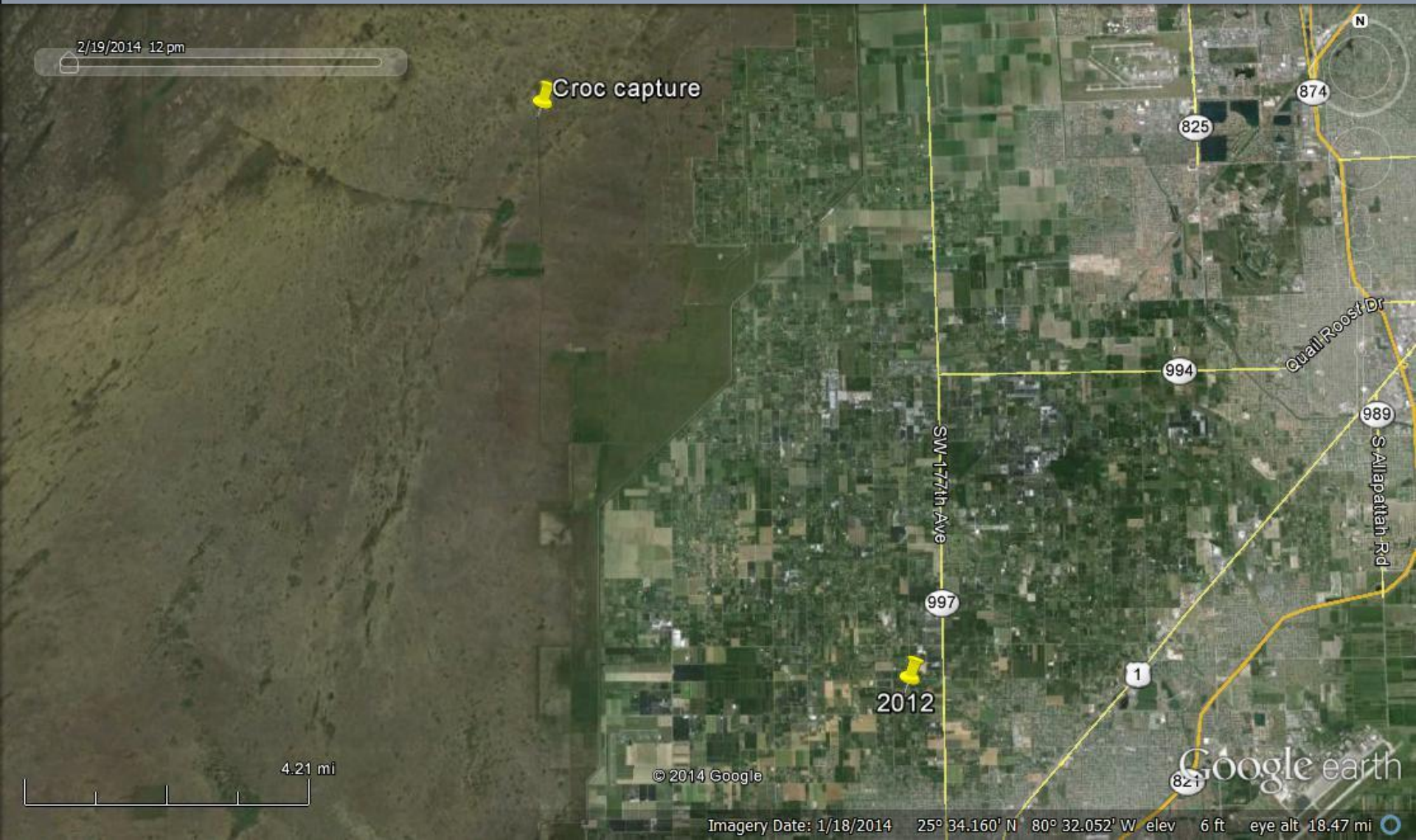
Veiled and panther chameleons

- New veiled locations in Dade and Broward
- Property ownership issues hinders removal of veileds
- No panther chameleons found in follow-up surveys since last July

Veiled chameleon
FWC Nonnative Species Database
July 22, 2014



Nile crocodile



2/19/2014 12 pm

Croc capture

2012

4.21 mi

© 2014 Google

Google earth

Imagery Date: 1/18/2014 25° 34.160' N 80° 32.052' W elev 6 ft eye alt 18.47 mi

Chekika, Everglades National Park

February 22, 2014



March 9, 2014



EVERGLADES CISMA

Thank you!

Mike Rochford (UF)
Joy Vinci (UF)
Michiko Squires (UF)
Michelle Curtis (UF)
Larry Connor (FWC)
Jake Edwards (FWC)

...and many more...

Jenny Ketterlin Eckles
University of Florida
Fort Lauderdale Research
and Education Center
Davie, Florida
954-577-6408
Jennifer.Eckles@myfwc.com
[http://www.myfwc.com/wildli
fehabitats/nonnatives/](http://www.myfwc.com/wildlifehabitats/nonnatives/)