

IveGot1 and EDDMapS Update

Chuck Bargeron

The University of Georgia



Overview

- **Website Update**
- **EDDMapS Florida Update**
- **IveGot1 Smartphone Apps**
- **IPCConnect**



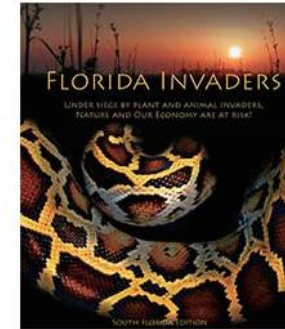
A Cooperative Invasive Species Management Area is a formal partnership of federal, state, and local government agencies, tribes, individuals and various interested groups that manage invasive species and is defined by a geographic boundary. Florida has a long history of invasive species organization cooperation such as the Florida Exotic Pest Plant Council, Noxious Exotic Weed Task Team, Florida Invasive Animal Task Team and Invasive Species Working Group. Everglades restoration poses new challenges for invasive species management and has created a need for a more defined commitment to cooperation among agencies and organizations at higher levels of policy and management.

What's New

- 5th Annual Everglades CISMA Non-Native Fish Round Up
- 2014 South Florida Environmental Report - Chapter 7: Status of Nonindigenous Species
- Digital Aerial Sketchmapping 2012-2013 shapefiles
- Wanted Poster: Argentine Black and White Tegu
- Native and Nonnative Crocodillans of Florida
- Necropsies of Reptiles: Recommendations & Techniques for Examining Invasive Species
- 2013 Everglades CISMA Newsletter
- Pest Alert - Chrysopogon aciculatus
- Eyes & Ears Presentation, Speaker Notes and Handouts

WEBSITE UPDATE

- An 'Arms Race' Between Snakes and Humans
- Ivegot1 iPhone App
- A Summary of Live Animal Importation by the United States
- Great Males Guide



Location



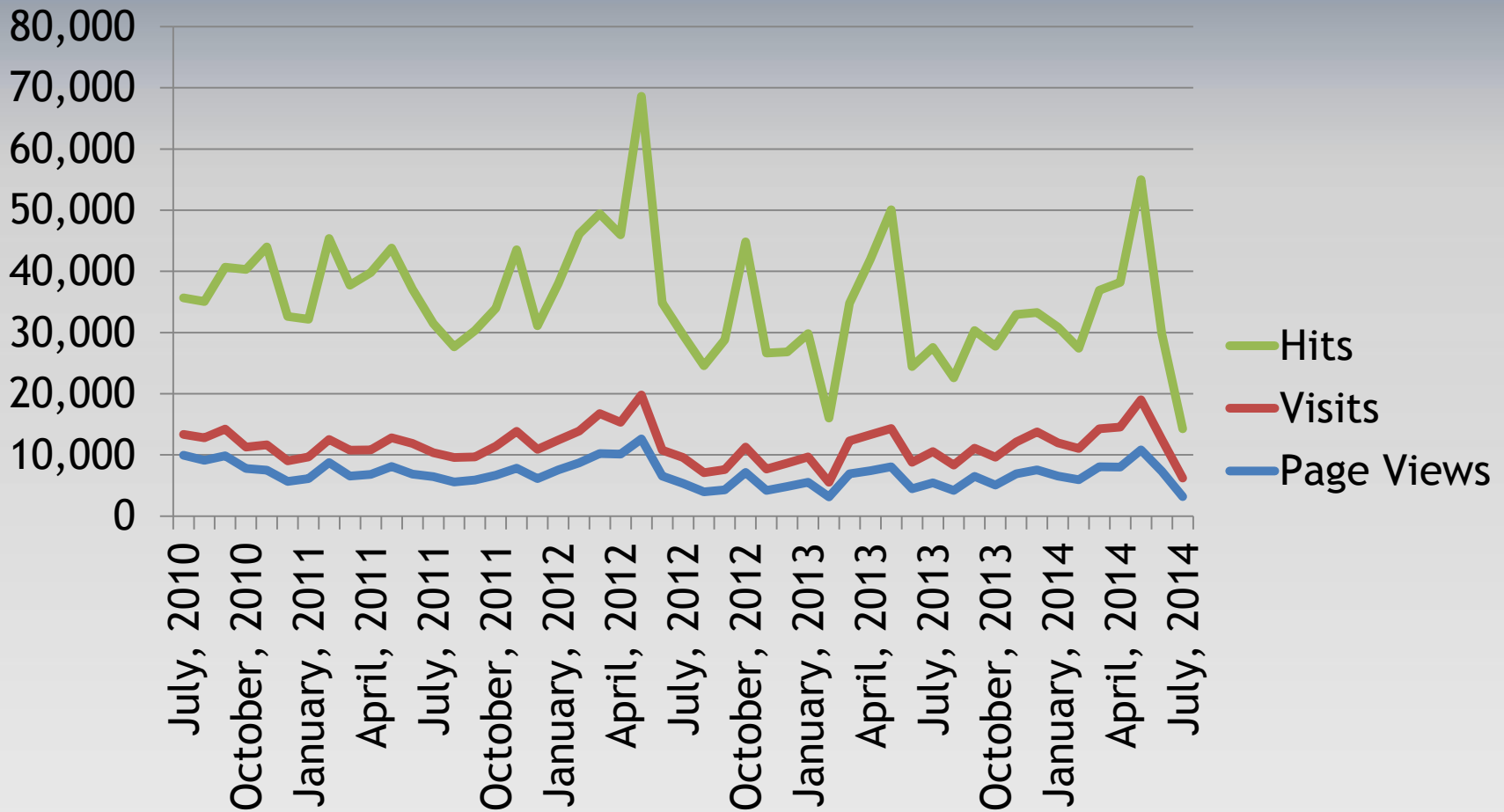
Signatories



MIAMI-DADE
COUNTY

Upcoming Events

ECISMA - Web Traffic



Overall Traffic

554,210 Page Views

319,102 Visitors

2,548,550 Hits

Popular Pages

- Species Info page (all species)
- Home Page
- Fish Roundup
- About ECISMA
- Don't let it loose
- Educational Resources
- Reptile Card Deck
- The Invasion of Exotic Reptiles and Amphibians in Florida
- 2013 ECISMA Newsletter

Social Media

facebook.

222 likes



380 Followers

458 Tweets

Distribution Maps

Report Sightings

Species Information

Tools & Training

My EDDMapS

About

Invasive Species Mapping Made Easy!



EDDMapS, started in 2005 with Southeastern U.S. focus, is now providing a picture of the distribution of invasive species across the U.S.

- ✓ Fast and easy to use - no knowledge of GIS required
- ✓ Web-based mapping of invasive species distribution to help fill gaps and identify "leading edge" ranges
- ✓ Facilitates Early Detection and Rapid Response implementation with online data entry forms, e-mail alerts and network of expert verifiers
- ✓ One Database for both local and national data
- ✓ Data can be searched, queried and downloaded in a variety of formats
- ✓ Cooperates with and aggregates data from other invasive species mapping projects
- ✓ Custom/hosted applications can be quickly and inexpensively developed

Statistics

278,210 Reports
1,216 Species

Resources

- ✓ EDDMapS Training Video
- ✓ REDDY: Reptile Early Detection and Documentation Observer Training Course
- ✓ Step-By Step Instructions for Reporting an Invasive Animal Sighting in EDDMapS

Recent Reports

- ✓ Australian-pine by Jim Bavouset in Lee County, Florida
- ✓ air-potato by Curtis Domsch in Brevard County, Florida
- ✓ cogongrass by Jeremy Crossland in Alachua County, Florida
- ✓ cogongrass by Jeremy Crossland in Marion County, Florida

Data Sharing Partners



EDDMAPS FLORIDA UPDATE

FLORIDA
Natural Areas
INVENTORY

- ✓ air-potato by Jeremy Crossland in Marion County, Florida
- ✓ giant reed by Jeremy Crossland in Lake County, Florida
- ✓ giant reed by Jeremy Crossland in Lake County, Florida
- ✓ kudzu bug by Megacopta Working Group in Hernando

Statistics - Overall

- **278,211 Reports**
- **1,216 Species**
- **1,376 Reporters**

- **3,083 Web Reports**
- **416 iPhone Reports**
- **315 Android Reports**

Statistics – Last Year

- **7,630 Reports**
- **1,216 Species**
- **382 Reporters**

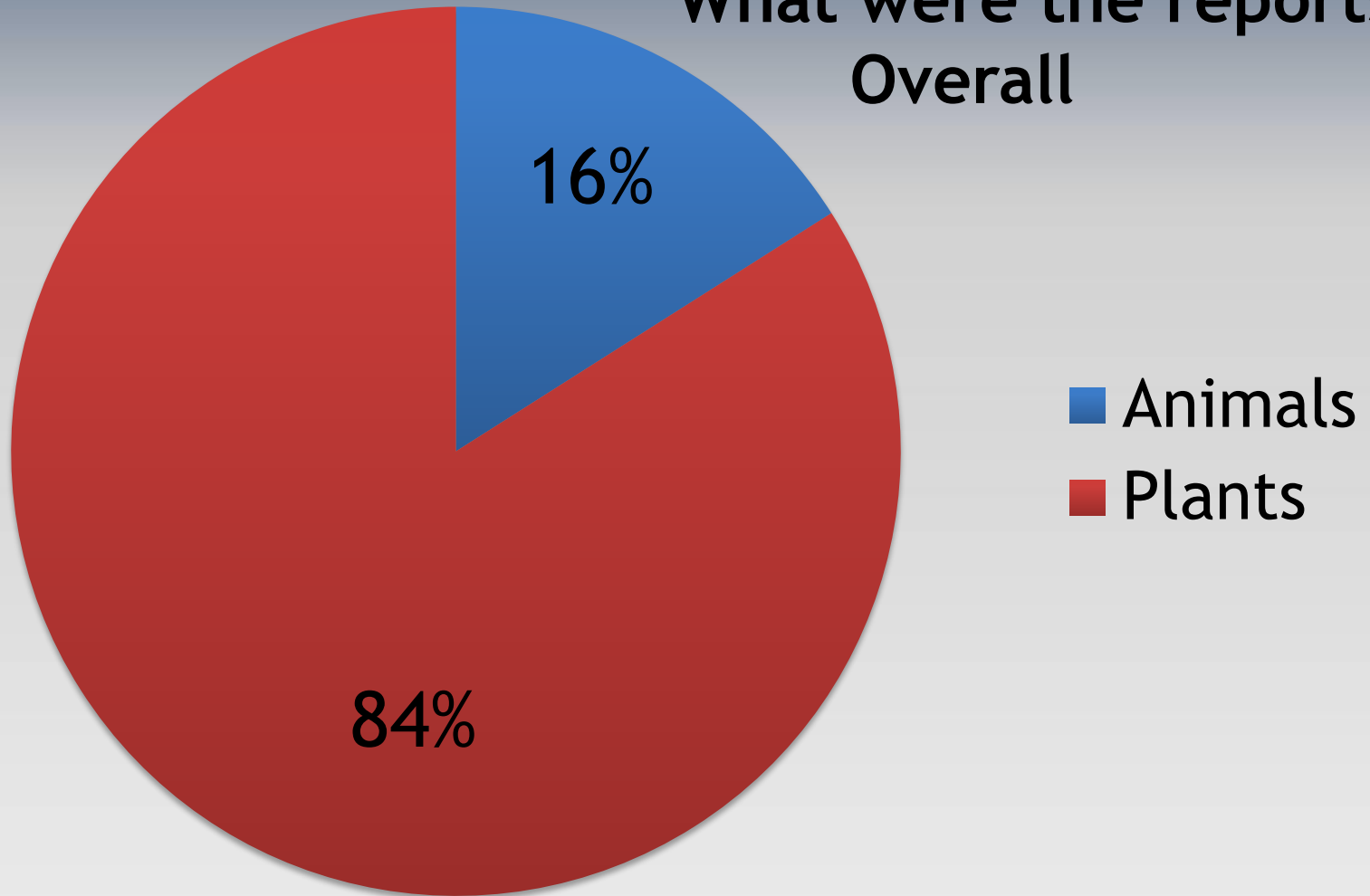
- **277 Web Reports**
- **142 iPhone Reports**
- **170 Android Reports**

EDDMapS Florida Statistics

- **Of the 985 reports from smartphones in Florida, there were 230 unique reporters.**
- **111 of these reporters only submitted one record.**
- **37 of these reporters only submitted 2 records**
- **The most records reported by a single reporter were 99 and second most was 72 both from professionals.**

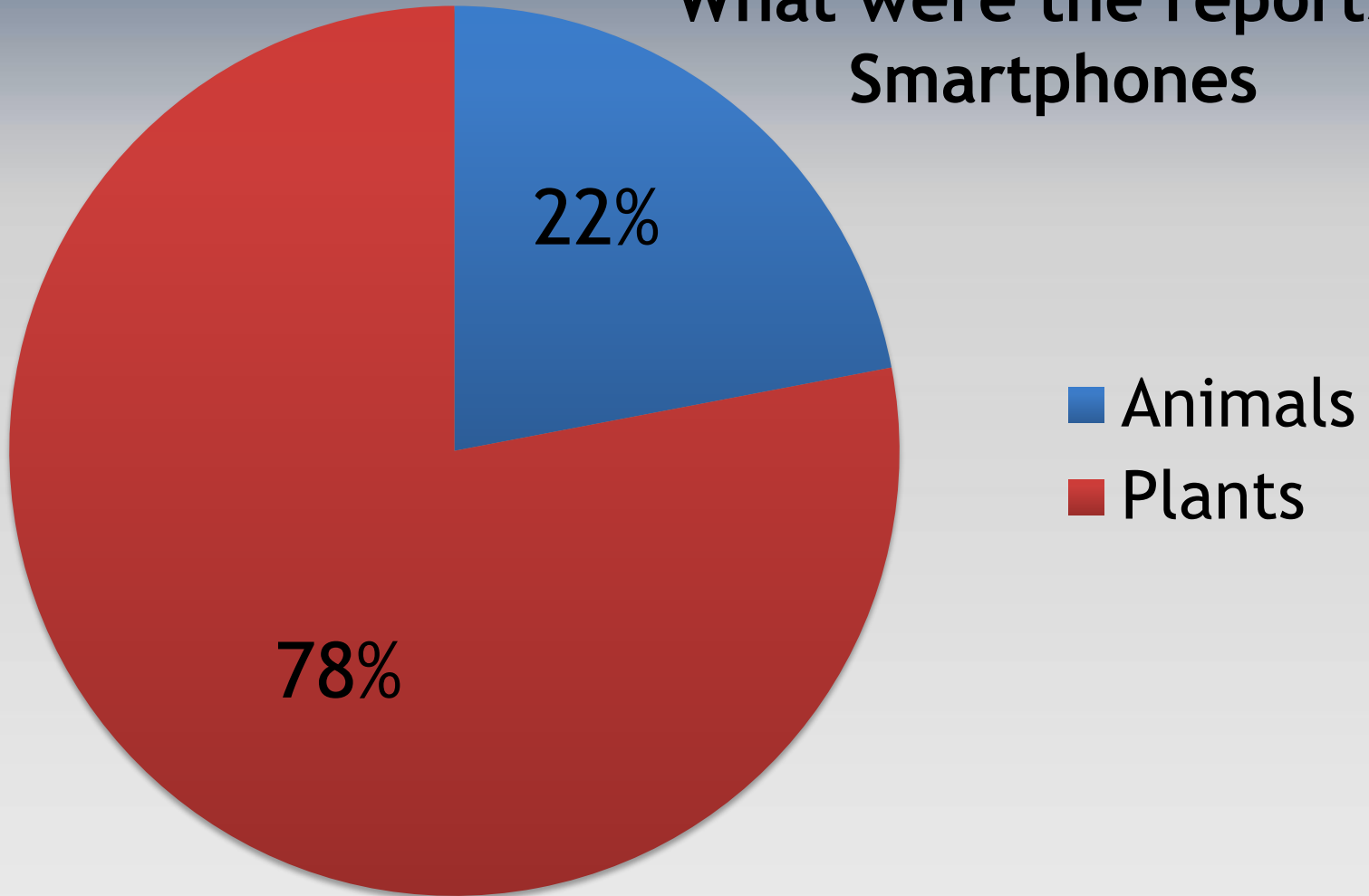
EDDMapS Florida Statistics

What were the reports?
Overall

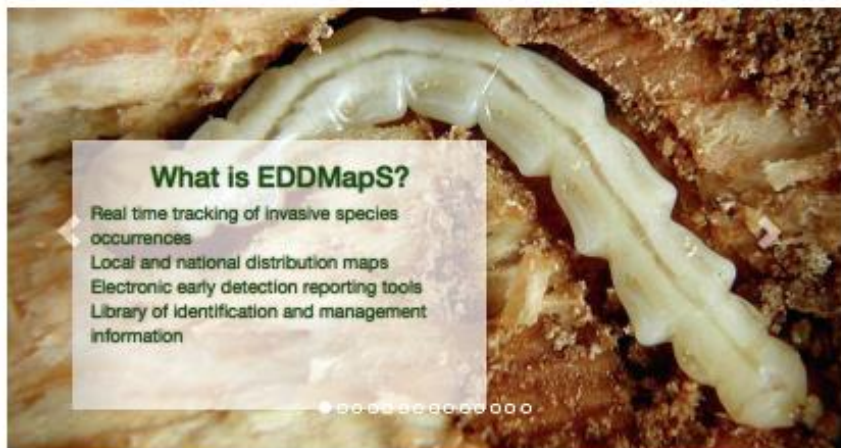


EDDMapS Florida Statistics

What were the reports?
Smartphones



EDDMAPS
~~**COMING SOON**~~
LIVE AS OF YESTERDAY



What is EDDMapS?

- Real time tracking of invasive species occurrences
- Local and national distribution maps
- Electronic early detection reporting tools
- Library of identification and management information

Educational Resources

- ✓ EDDMapS: Invasive Plant Mapping Handbook
- ✓ EDRR Training Workshop Handouts
- ✓ EDDMapS Florida Training Video
- ✓ EDDMapS Florida Animals Training Video
- ✓ EDDMapS Missouri River Watershed Coalition Training Video
- ✓ Mid-Atlantic Early Detection Network Training Video
- ✓ EDDMapS for Forest Pests Reporting?
- ✓ EDDMapS - National Plant Board

Recent Reports

- ✓ praxells by Terri pietroburgo in Lake County, Florida
- ✓ spotted wing drosophila by Eastern Spotted Wing Drosophila Volunteer Monitoring Network in Owen County, Kentucky
- ✓ spotted wing drosophila by Eastern Spotted Wing Drosophila Volunteer Monitoring Network in Caldwell County, Kentucky
- ✓ spotted wing drosophila by Eastern Spotted Wing Drosophila Volunteer Monitoring Network in Monroe County, New York
- ✓ spotted wing drosophila by Eastern Spotted Wing Drosophila Volunteer Monitoring Network in Monroe County, New York

Supporters



Projects

- ✓ Southeast Early Detection Network
- ✓ EDDMapS West
- ✓ Mid-Atlantic Early Detection Network
- ✓ Invasive Plant Atlas of New England
- ✓ Florida Invasive Species Partnership
- ✓ EDDMapS First Detector Programs
- ✓ EDDMapS Alberta - Alberta Invasive Plants Council
- ✓ EDDMapS Ontario
- ✓ EDDMapS Prairie Region - Manitoba and Saskatchewan
- ✓ Biological Control Agents of Weeds
- ✓ Invasive Plant Atlas of New England
- ✓ What's Invasive
- ✓ National Wildlife Refuge Early Detection Network for New England
- ✓ Appalachian Trail Conservancy
- ✓ Invaders of Texas
- ✓ Alaska Exotic Plant Information Clearinghouse
- ✓ New Invaders Watch Program
- ✓ Outsmart Invasive Species

Statistics

2,635,722 County Reports
1,694,728 Point Reports
4,582 Species / 22,542 Users

Report Images



Giant Tiger Prawn - *Penaeus monodon*
Report by Darrell Batton,
FloridaHillbilly.com

New My EDDMapS with New Features Under Development

Overview

Reports

Download

Alerts

Projects

Edit Profile

View Profile

My EDDMapS - Chuck Bargeron

User Statistics

	Overall	This Year	This Month
Reports	6	0	0
Species	5	0	0
States	3	0	0
Counties	4	0	0

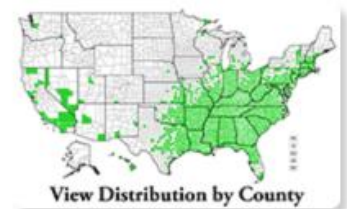
Recent Reports

ID	Subject	Location	Date	Manage
x	x	x		

All Taxa from EDDMapS Home

Distribution Maps

Click on each species to view distribution maps, information, image and references.



Wildlife

Browse by Growth Habit:



Burmese python

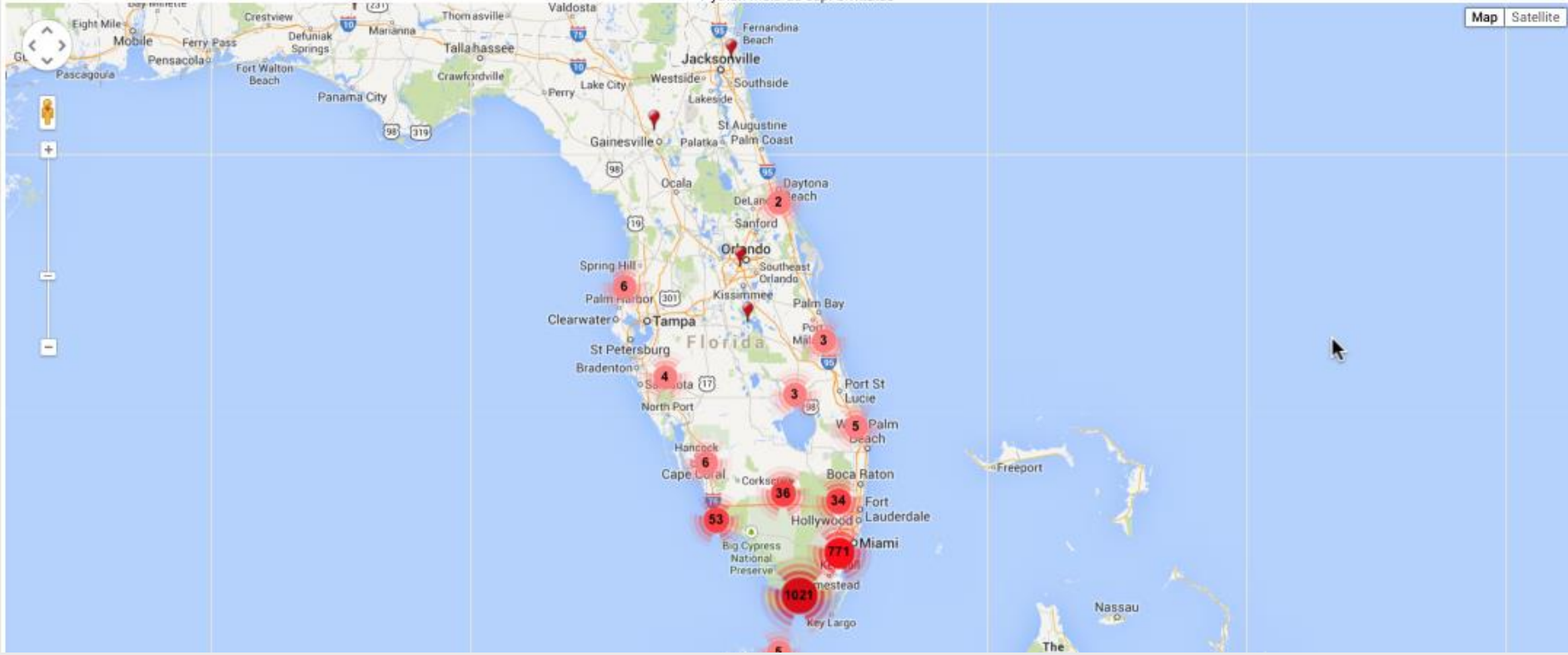
Python molurus ssp. bivittatus Kuhl, 1820

Invasive Plant Atlas

States Counties **Points** GIS

1956 points

XLS KML GPX Shapefile
Share Flag Fullscreen



Burmese python

Python molurus ssp. bivittatus Kuhl, 1820

- States
- Counties
- Points**
- GIS

- XLS
- KML
- GPX
- Shapefile

1956 points

- Share
- Flag
- Fullscreen
- X

Dynamic Map Embed code:

```
<iframe src="http://maps.bugwood.org/eddmappoint.cfm?notitle&sub=20461" frameborder="0" allowfullscreen="true" webkital
```

Map link:

```
http://www.eddmappoint.org/distribution/viewmap.cfm?sub=20461
```

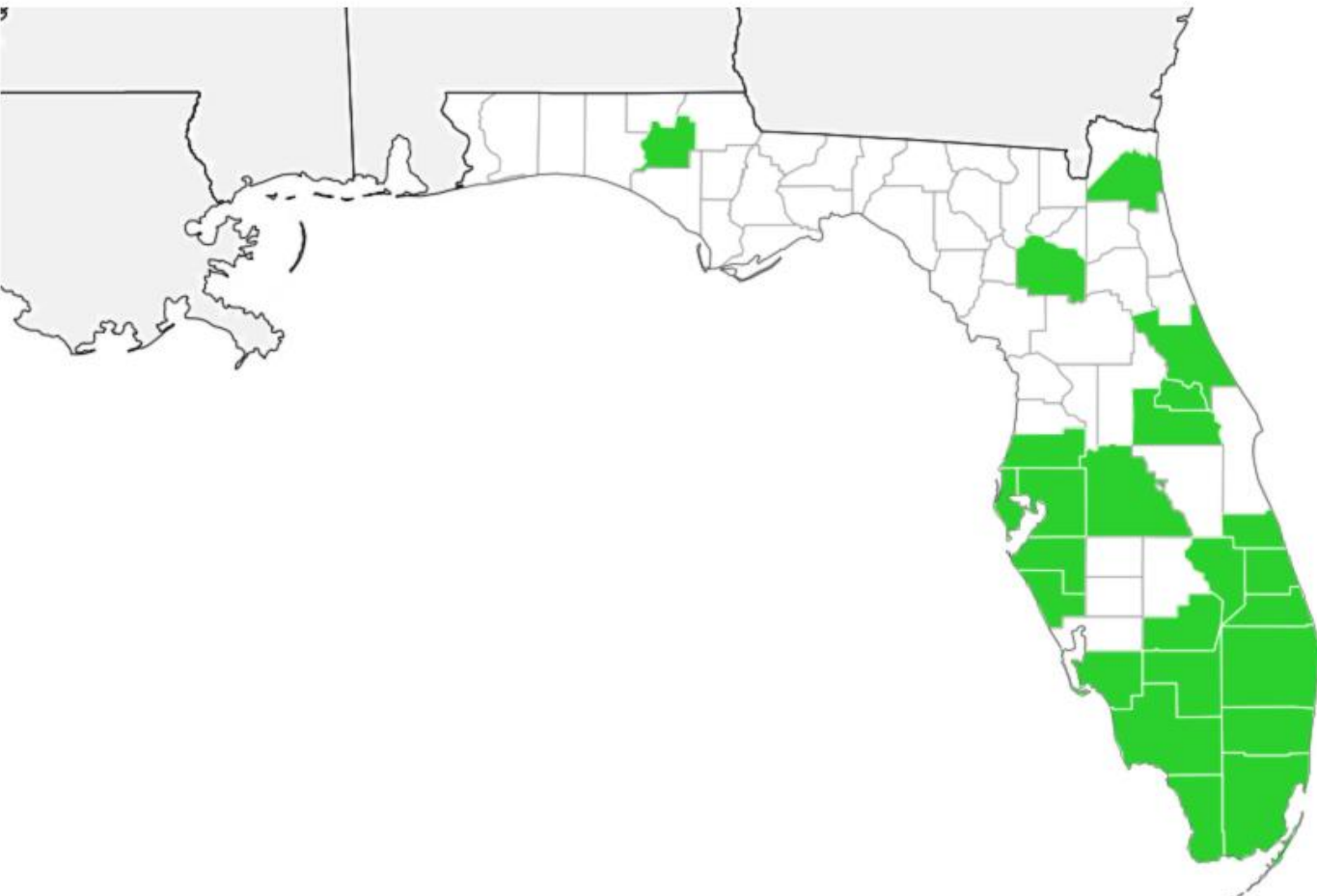


Burmese python

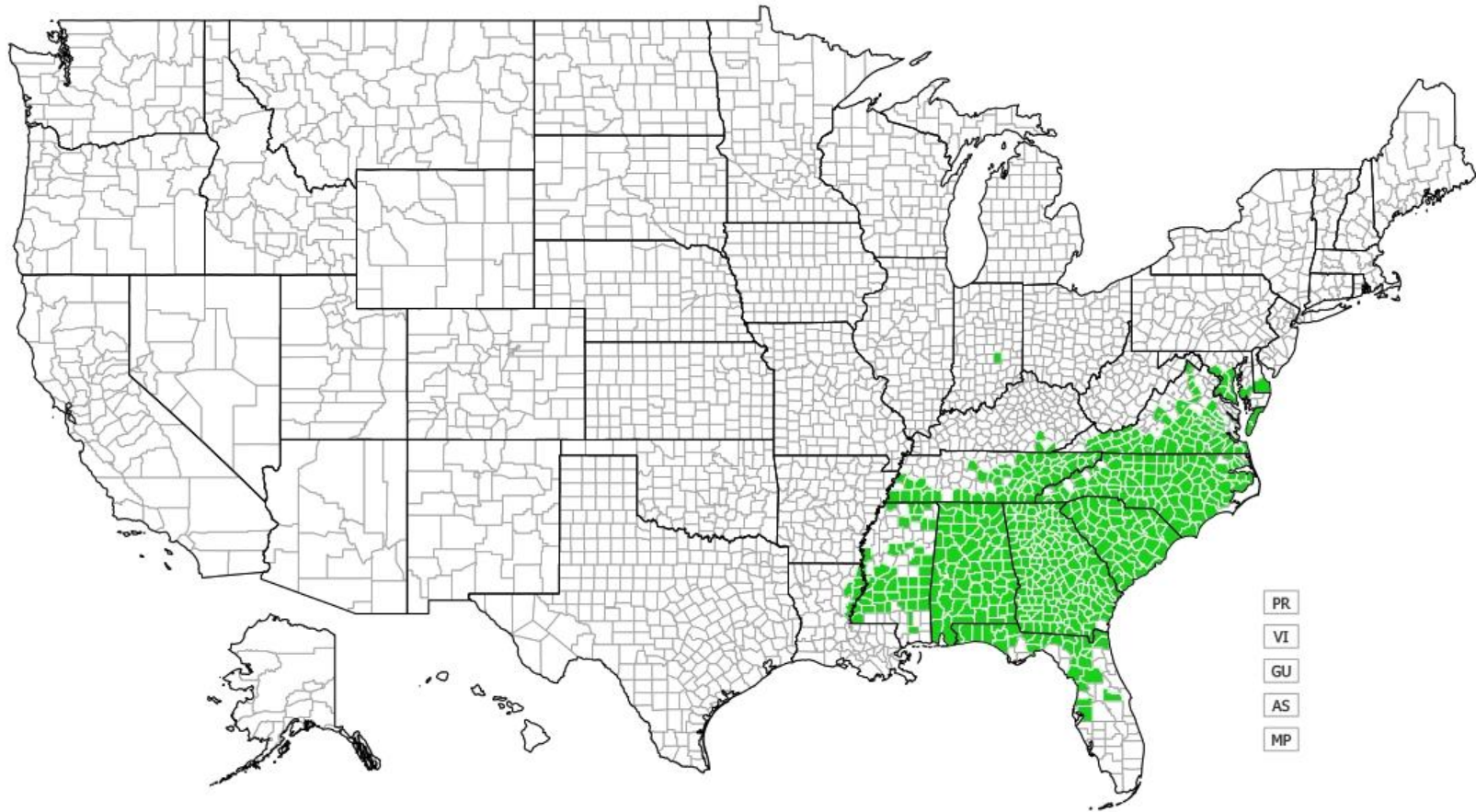
Python molurus ssp. bivittatus Kuhl, 1820

States Counties Points GIS

XLS KML GPX Shapefile



JPEGs Generated of Maps for Easy Download



EDDMapS
Early Detection & Distribution Mapping System

Last observation: June 11, 2014 - Map generated: June 12, 2014

Kudzu Bug Distribution

EVERGLADES CISMA

EDDMapS 3.0

- Unified Interface, Maps and Reporting Forms
- Responsive Design (works great on all platforms)
- Once Implemented of Sub-sites (EDDMapS Florida) – Changes will be Global (less bugs)
- All Modules on Sub-sites (no more bouncing between EDDMapS Home and Sub-sites)

EDDMapS 3.0 Coming Soon

- Polygon support
- Negative data support
- Better clustering on point maps
- Color coding – historic records (herbarium) vs recent reports
- Color coding – positive, negative, eradicated, under treatment?
- Better error checking on report forms
- Email validation
- Finally, follow-ups with users after reports and after review

EDDMapS GIS

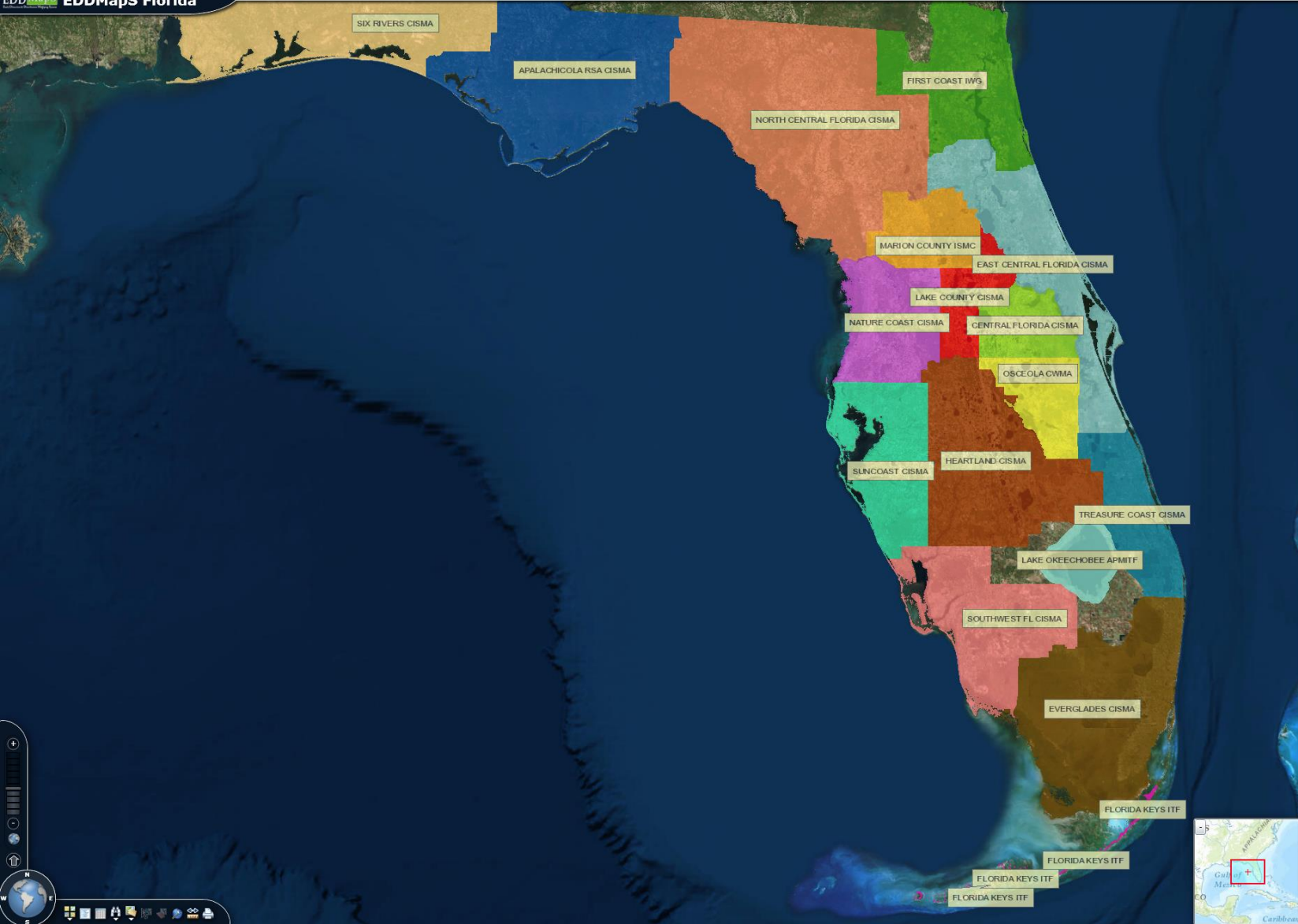
<http://gis.eddmaps.org/apps/eddmapsflorida/>

Still in “beta” testing

EDDMapS data running on ArcGIS server

Can connect via ArcGIS Desktop

Speed enhancements over Google Maps for polygons, but has some limitations

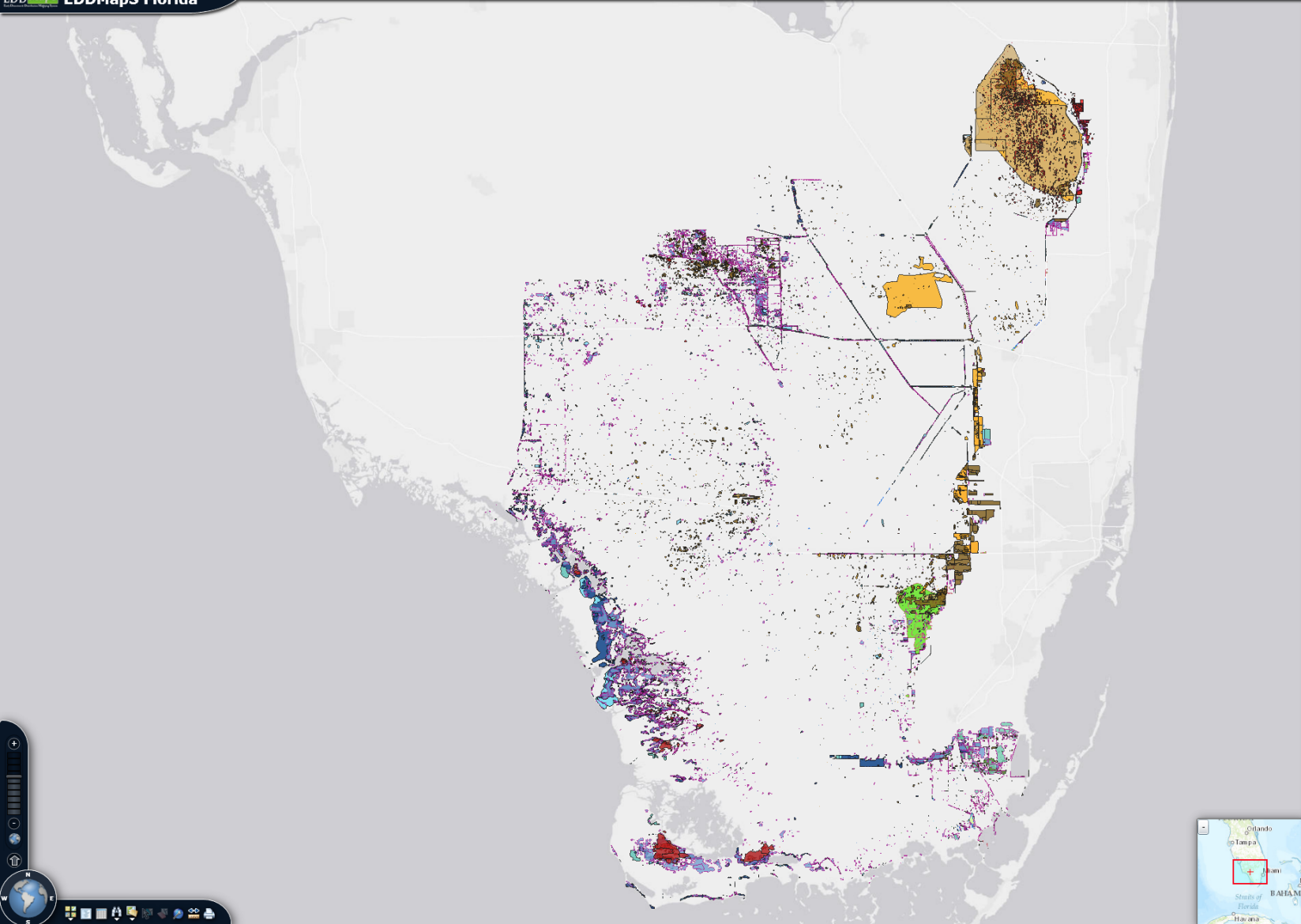


Map Contents

- Florida Mapping Data
- Species By Year
- Florida Base Layers
- Imagery

Map navigation controls including a compass, a scale bar, and various tool icons.

EVERGLADES CISMA



Map Contents

- Florida Mapping Data
- Species By Year
 - BySpecies
 - Old World Climbing Fern
 - Climbing Fern 2012
 - Climbing Fern 2010
 - Climbing Fern 2008
 - Climbing Fern 2005
 - Melaleuca
 - Brazilian Pepper
 - Australian Pine
- Florida Base Layers
- CISMAs
 - Apalach. Reg. Stewardship Alliance
 - Central Florida Cooperative Invasi
 - East Central Florida Cooperative In
 - Florida Keys Invasive Task Force
 - Everglades Cooperative Invasive S
 - First Coast Invasive Working Group
 - Green Swamp Cooperative Invasiv
 - Heartland Cooperative Invasive Sp
 - Lake County Cooperative Invasiv
 - Marion County Invasive Species Mg
 - Nature Coast Cooperative Invasiv
 - North Central Florida Cooperative I
 - Osceola County Cooperative Weed
 - Six Rivers Cooperative Invasive Sp
 - Southwest FL Cooperative Invasiv
 - Suncoast Cooperative Invasive Spe
 - Treasure Coast Cooperative Invasi
 - Lake Okeechobee Aquatic Plant Ma
- Counties
- WaterManagementDistricts

Light Gray Canvas



Map Contents

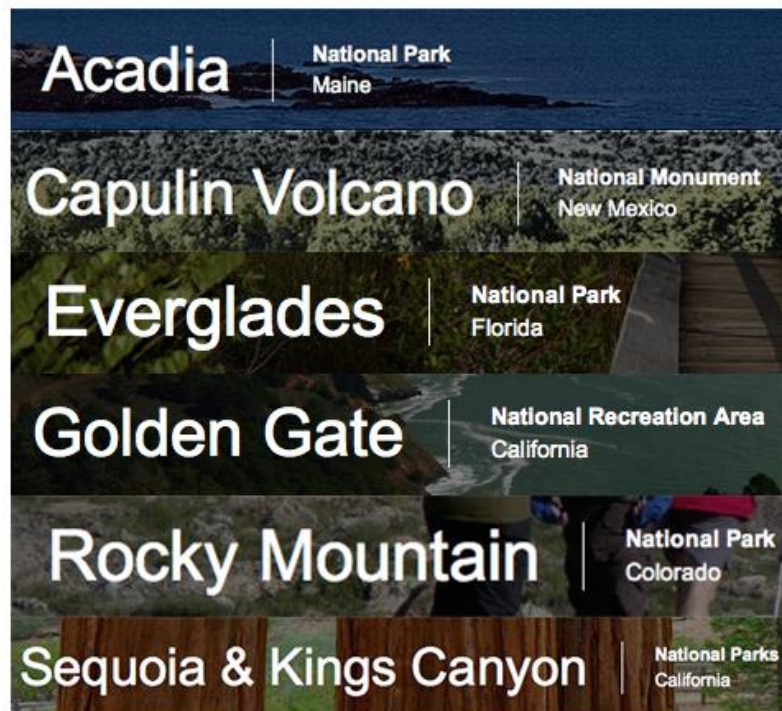
- Florida Mapping Data
- Species By Year
 - BySpecies
 - Old World Climbing Fern
 - Climbing Fern 2012
 - Climbing Fern 2010
 - Climbing Fern 2008
 - Climbing Fern 2005
 - Melaleuca
 - Melaleuca 2012
 - Melaleuca 2010
 - Melaleuca 2008
 - Melaleuca 2005
 - Brazilian Pepper
 - Brazilian Pepper 2012
 - Brazilian Pepper 2010
 - Brazilian Pepper 2008
 - Brazilian Pepper 2005
 - Australian Pine
 - Australian Pine 2012
 - Australian Pine 2010
 - Australian Pine 2008
 - Australian Pine 2005
 - Florida Base Layers

Imagery

POWERED BY
esri



Participating Parks:



Help Protect Our National Parks

Invasive species are a threat to native plants and animals, crowding natives, consuming food sources, or acting as fire hazards. Help protect our National Parks using your Android or iPhone to report invasive species.

- Step 1. [Create an EDDMapS Account](#)
- Step 2. Get the [iPhone app](#) or the [Android app](#).
- Step 3. Start reporting!

Park Service Manager and want your Park added?
Find out how you can [set up your park!](#)





Invasive Species Alert



Grass or Grasslike



Hardwood Trees



Herbs/Forbs



Vines



Types



Alphabetical



Queue



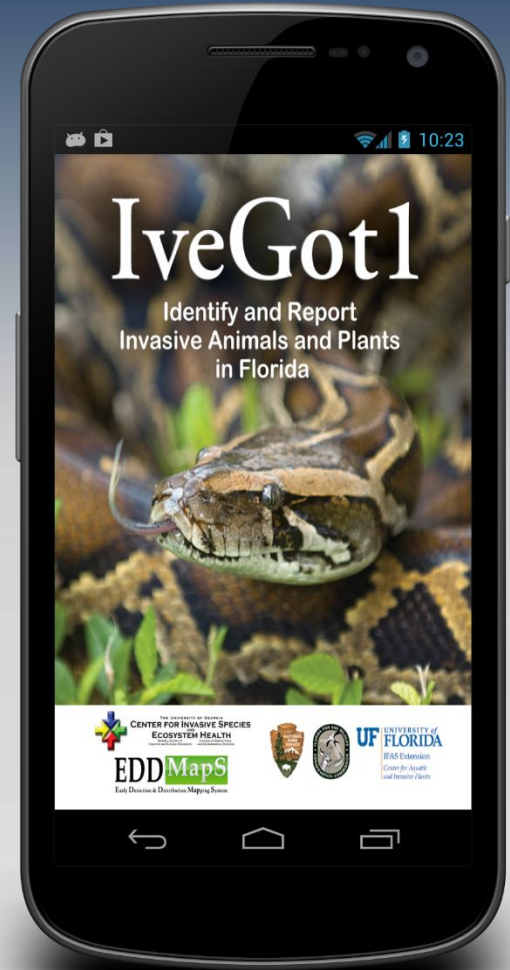
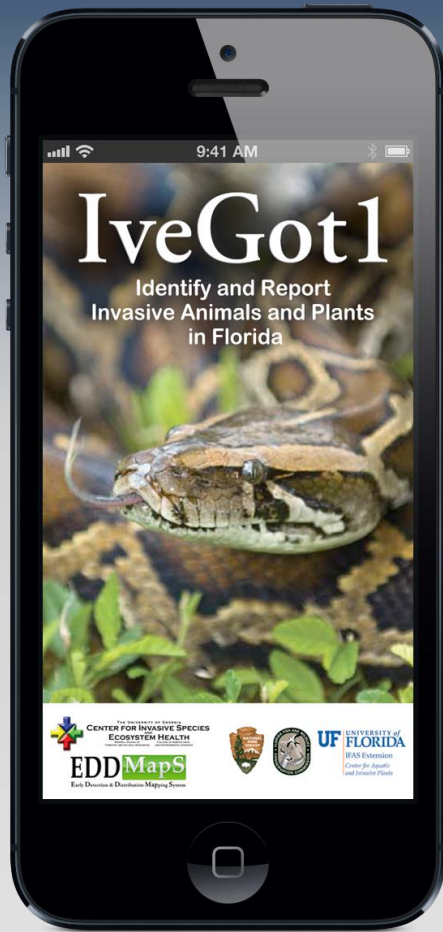
More

EDD MapS

Early Detection & Distribution Mapping System



- Interface to view distribution by project (all data)
- Report infestations by project but with points
- Report treatments
- Tie treatments to infestations
- Under Development Now!



SMARTPHONE APPS UPDATE

Statistics

iOS

20,107 downloads

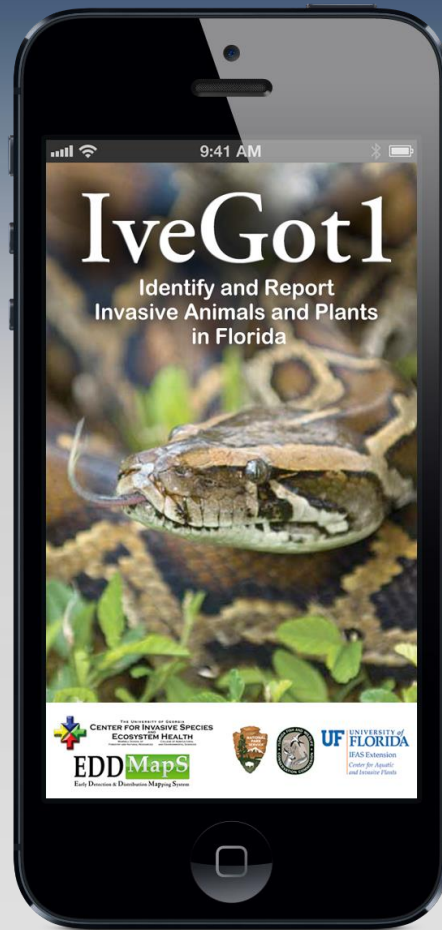
22,677 upgrades

4 stars with 12 reviews

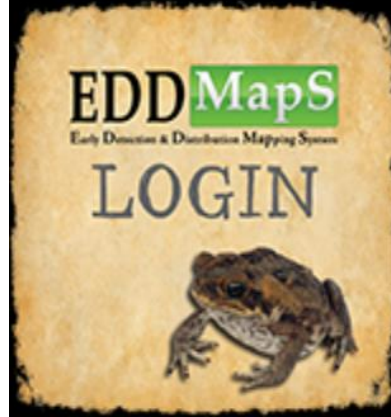
Android

1,849 installs – 693 current

4.78 stars with 9 reviews



IPHONE



EDD MapS

Early Detection & Distribution Mapping System

Registration Form

First Name (required)

Last Name (required)

Organization/Company (required)

User Knowledge Level (required)

Beginner

Some ID Training

Expert

User Information

Note: Your user name and password cannot contain spaces:

Email Address for Username

Password (required)

First Detector :

State :

EDD MapS

Early Detection & Distribution Mapping System

Registration Form

First Name (required)

Last Name (required)

Organization/Company (required)

User Knowledge Level (required)

Beginner

Some ID Training

Expert

User Information

Note: Your user name and password cannot contain spaces:

Email Address for Username

Password (required)

First Detector :

State :

Cancel

Submit



IveGot1



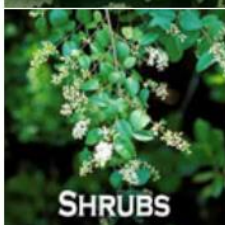
Aquatics



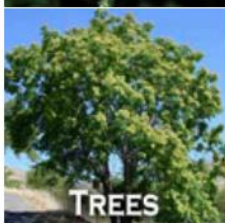
Grasses



Herbs/Forbs



Shrubs



Trees



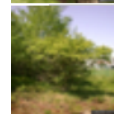
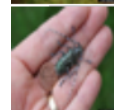
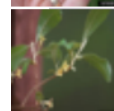
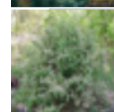
Vines

[Back](#)

All Species

[Scientific](#)

Search

**Amur honeysuckle***Lonicera maackii***Amur maple***Acer ginnala***Amur peppervine***Ampelopsis brevipedunculata***Amur silver-grass***Miscanthus sacchariflorus***Asian Longhorned Beetle***Anoplophora glabripennis***Autumn olive***Elaeagnus umbellata***Baby's breath***Gypsophila paniculata***Bachelor's buttons***Centaurea cyanus***beech bark disease***Nectria coccinea***Bell's honeysuckle***Lonicera x bella***Bighead Carp**

Back

Add to My List



Back

Add to My List



Imperata cylindrica

Common Names

Cogon grass

Details



Images



Info



Map



Images



Info



Map

Back

Imperata cylindrica
Cogon grass

2014-07-21 14:19 PM

Report Image

Take a Picture

Pick from your Library

Location

Latitude 31.47644
Longitude -83.52456
Accuracy 5.0 m



Time Spent in Minutes

5 10 15 30 45 60

Infestation Information

Area ## Acres Sq Feet

Density Low Medium High

Notes

Save

Back

Report Image

Pick from your Library

Location

Latitude 31.47644
Longitude -83.52456
Accuracy 5.0 m



Time Spent in Minutes

5 10 15 30 45 60

Infestation Information

Area ## Acres Sq Feet

Density Low Medium High

Notes

Any Extra Information Goes Here

Save

Pin Location:

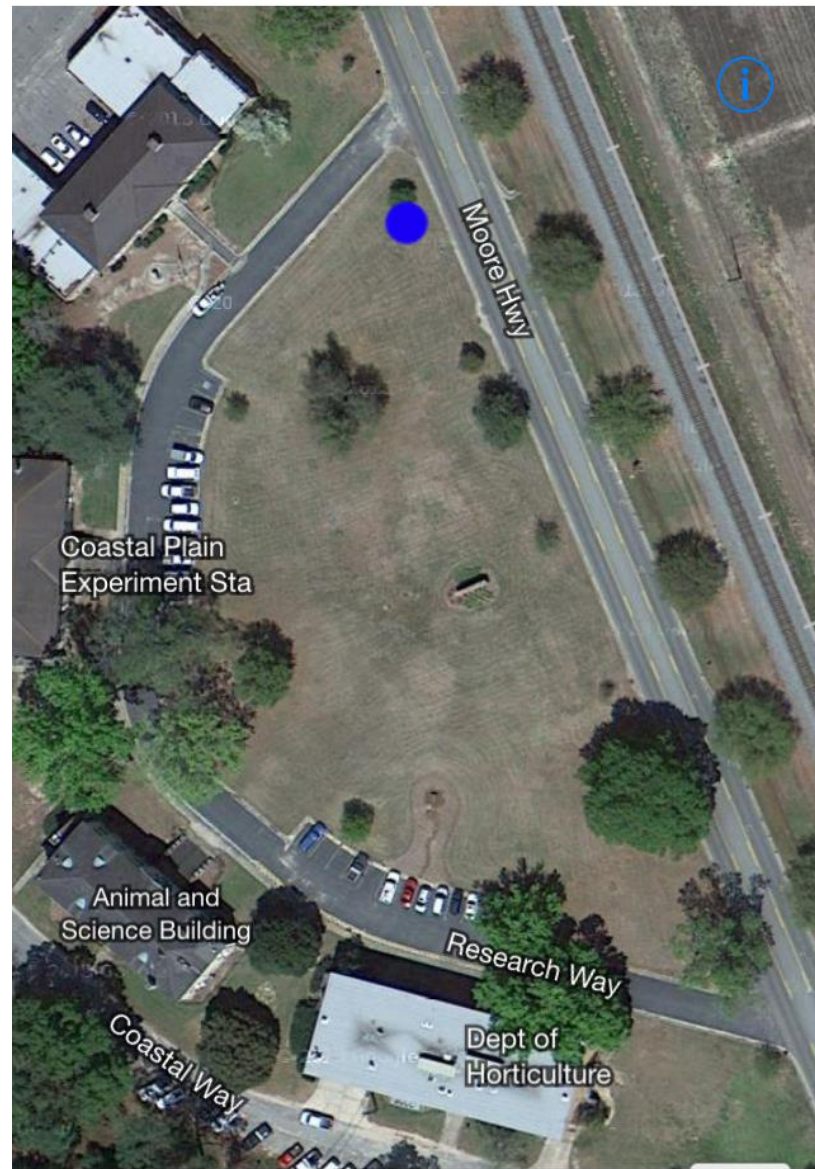
LAT:31.476442 LNG:-83.524559



Cancel Point Polygon Done

Pin Location:

LAT:31.477066 LNG:-83.524603



Cancel Point Polygon Done

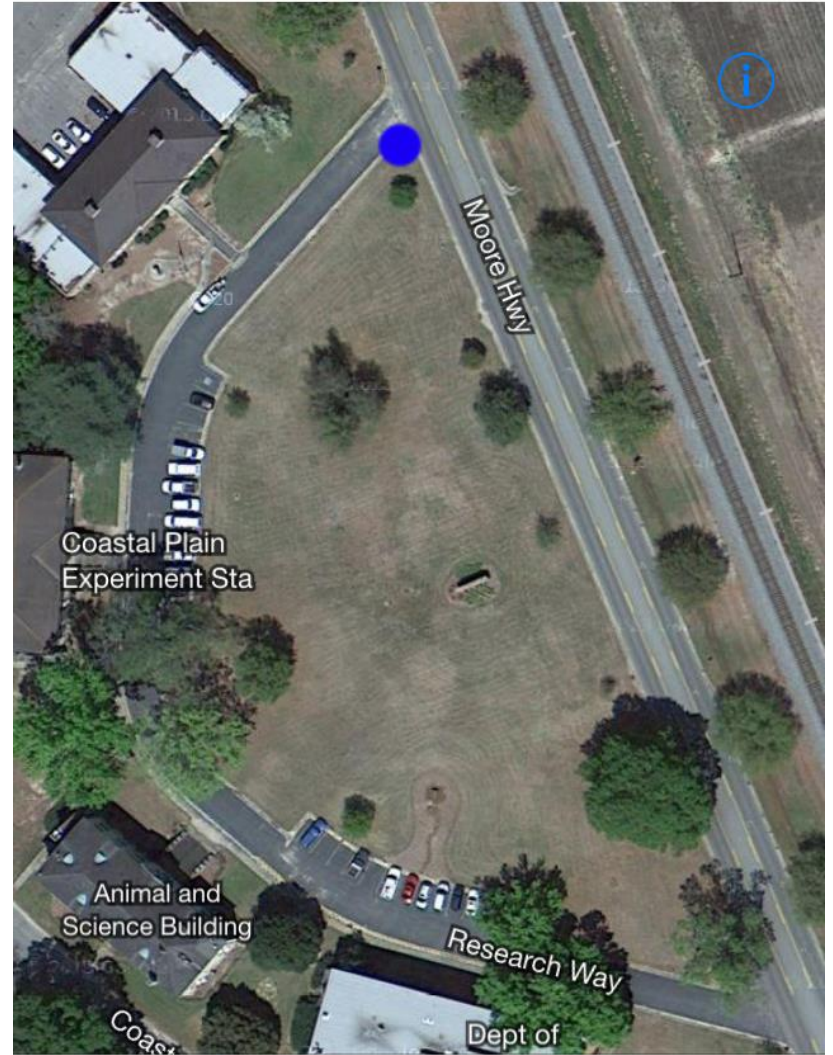
Carrier 10:24 AM
Pin Location:
LAT:31.477066 LNG:-83.524603



Clear Points Sketch Draw

Cancel Point Polygon Done

Carrier 10:24 AM
Polygon Drawn:
Approximatly 0.0000 Acres



Clear Points Sketch Draw

Cancel Point Polygon Done

Polygon Drawn:
Approximatly 0.0000 Acres



Clear Points Sketch Draw

Cancel Point Polygon Done

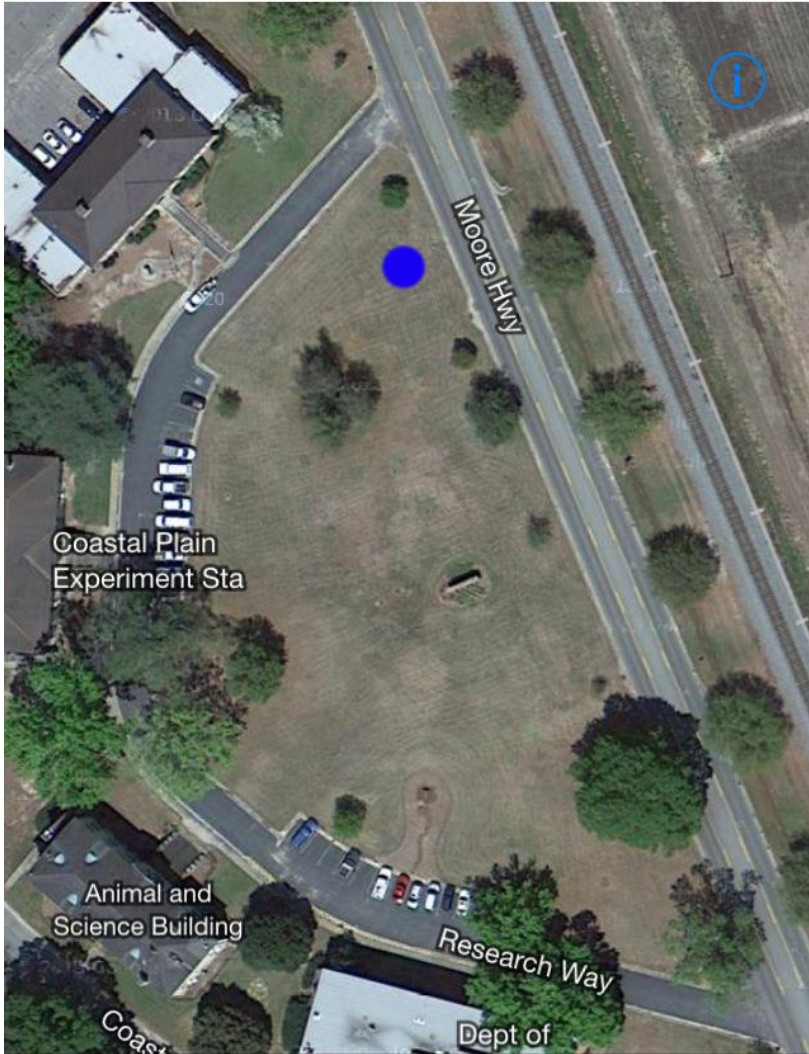
Polygon Drawn:
Approximatly 0.7230 Acres



Clear Points Sketch Draw

Cancel Point Polygon Done

Carrier 10:25 AM
Pin Location:
LAT:31.476989 LNG:-83.524594



Clear Points Sketch Draw

Cancel Point Polygon Done

Carrier 10:25 AM
Polygon Drawn:
Approximately 1.0186 Acres



Clear Points Sketch Draw

Cancel Point Polygon Done

Back

Add to My List



Burmese python

Northern African python



Images



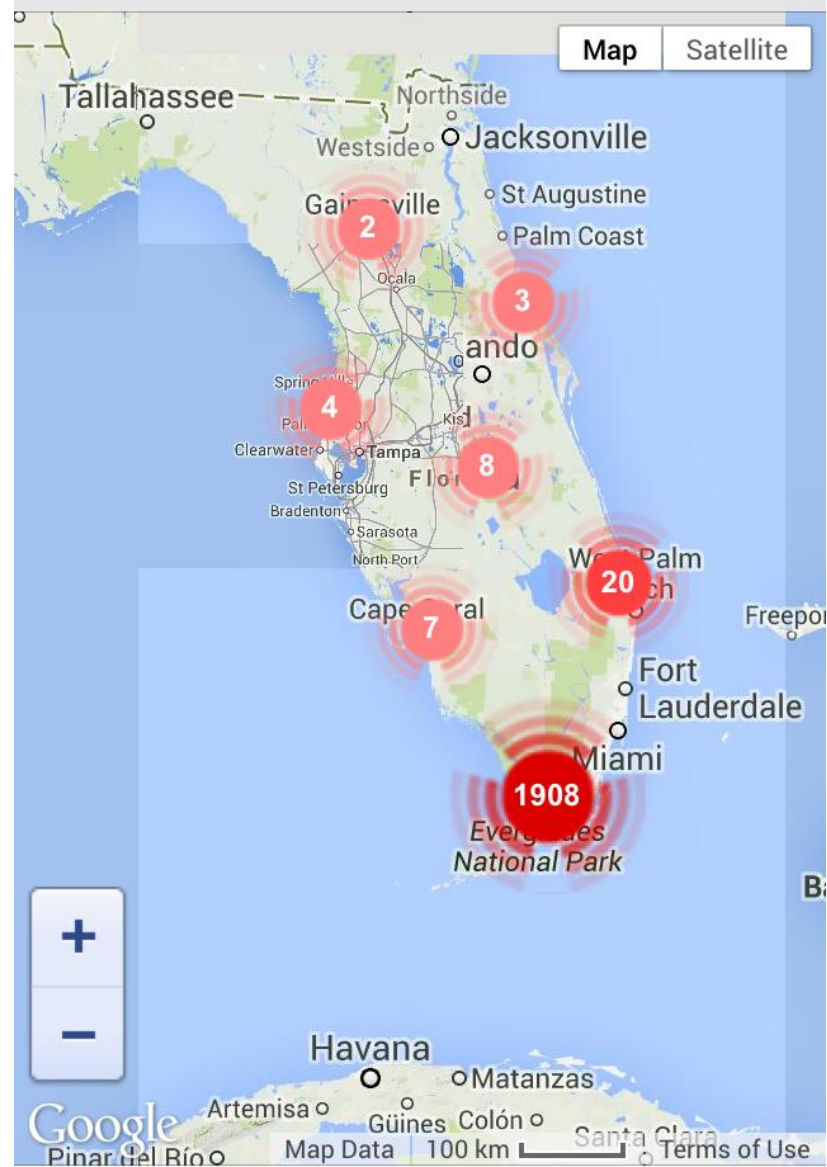
Info



Map

Back

Add to My List



Images



Info



Map

[← Back](#)

Python molurus
Burmese python

2014-07-21 14:21 PM

Report Image

[Take a Picture](#)

[Pick from your Library](#)

Location

Latitude 31.47644

Longitude -83.52456

Accuracy 5.0 m



Time Spent in Minutes

5

10

15

30

45

60

Number Observed

One

Multiple

Notes

Any Extra Information Goes Here

[Save](#)

[← Back](#)

Time Stamp:

2014-04-17 09:54:35

[Add/Edit Reported Species](#)

No Species have been selected for negative data.

Time Spent :

5

10

15

30

45

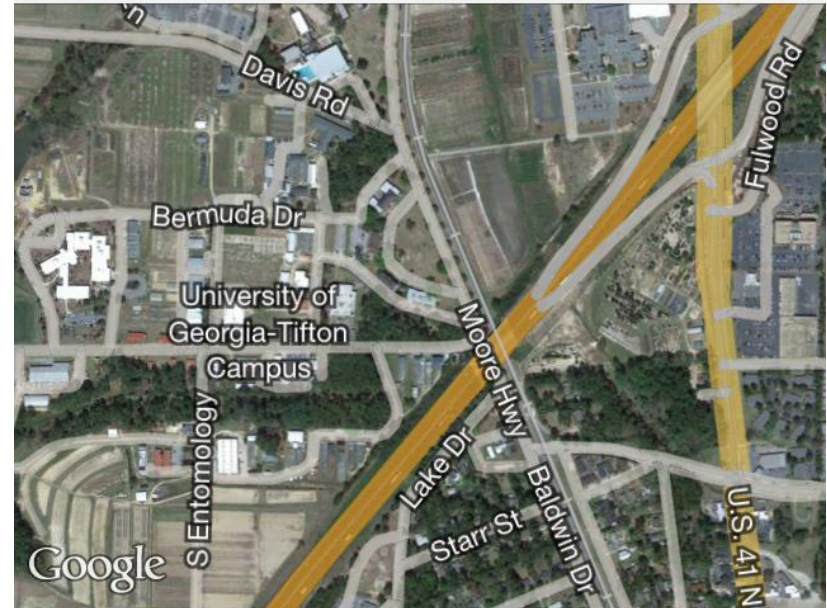
60

[Map Surveyed Area](#)



[Save](#)

[← Back](#)



Negative Data Report Notes :

Any Extra Information Goes Here

[Save](#)

[Back](#)[Edit](#)**Chinese yam***Dioscorea polystachya*[Cancel](#)[Done](#)**Trees**

Tamarix ramosissima

Sawtooth oak*Quercus acutissima***Siberian elm***Ulmus pumila***Smooth, Glossy buckthorn***Frangula alnus***Tree of heaven***Ailanthus altissima***Vines****Amur peppervine***Ampelopsis brevipedunculata***Black Swallowwort***Cynanchum louiseae***Butter and eggs***Linaria vulgaris***Chinese yam***Dioscorea polystachya***Chocolate Vine***Akebia quinata***Common periwinkle***Vinca minor*

Positive Data Reports



Dioscorea polystachya

Chinese yam

Negative Data Reports

Feral Hogs Asian Longhorned B...

0.1875 acre Polygon Drawn

About EDDMapS >

Partners and Credits >

Disclaimer >

More Bugwood Apps >

Feedback >

Version: 1.0



THE UNIVERSITY OF GEORGIA
**CENTER FOR INVASIVE SPECIES
AND
ECOSYSTEM HEALTH**
WARRELL SCHOOL OF FORESTRY AND NATURAL RESOURCES COLLEGE OF AGRICULTURAL AND ENVIRONMENTAL SCIENCES

ip web 
solutions

IPCCONNECT INTEGRATION

EVERGLADES CISMA

IPCConnect Overview

- Fourth season in production for Invasive Plant Control, Inc. crews
- Tracks photo points and polygons
- Tracks chemical use, travel and hours
- Combines power of EDDMapS with treatment knowledge of IPC
- Implemented Solution for New Jersey Invasive Species Strike Team that is built on EDDMapS reports
- Work has started for a similar interface for Wisconsin

Other Projects of Interest

- iBiocontrol App for Western States
- iBiocontrol Website
- Decision Support Apps – Insecticide Recommendations for Stink Bugs in Cotton
- Identification Key Apps – Stink Bugs, Noxious Weeds in Montana, Invasive Plants in Alaska

THANKS

Try out the new apps,

Send us feedback

cbargero@uga.edu