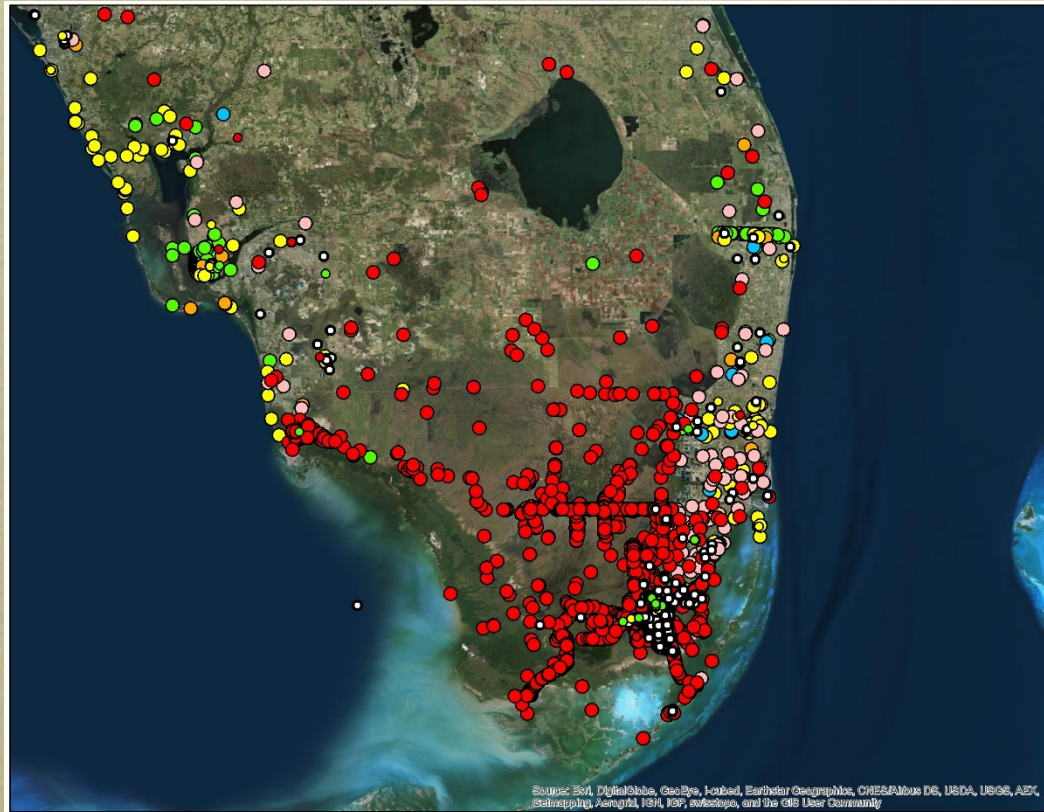


# EDDMapS/IveGot1, ECISMA Website and Hotline Updates



Jason Daniel Wagman  
Nonnative Wildlife Biologist  
Nonnative Fish and Wildlife Program



# EDDMapS Update - Overall

## Overall

- 47,476 Web Reports (2015 – 963 Reports)
- 28,355 iOS Reports (2015 – 12,447 Reports)
- 15,357 Android Reports (2015 – 3,016 Reports)

## 2016

- Average 121 reports/day – 42 last year
- Most reports in a day: 1,283 on June 15, 2016
- 22,960 Reports in 2016 from 1,314 reporters



THE UNIVERSITY OF GEORGIA  
CENTER FOR INVASIVE SPECIES  
AND  
ECOSYSTEM HEALTH  
WARNELL SCHOOL OF FORESTRY AND NATURAL RESOURCES  
COLLEGE OF AGRICULTURAL AND ENVIRONMENTAL SCIENCES



# Statistics-Florida

## Overall

- 2,323 Reporters
- 4,330 Web
- 1,401 iPhone
- 733 Android

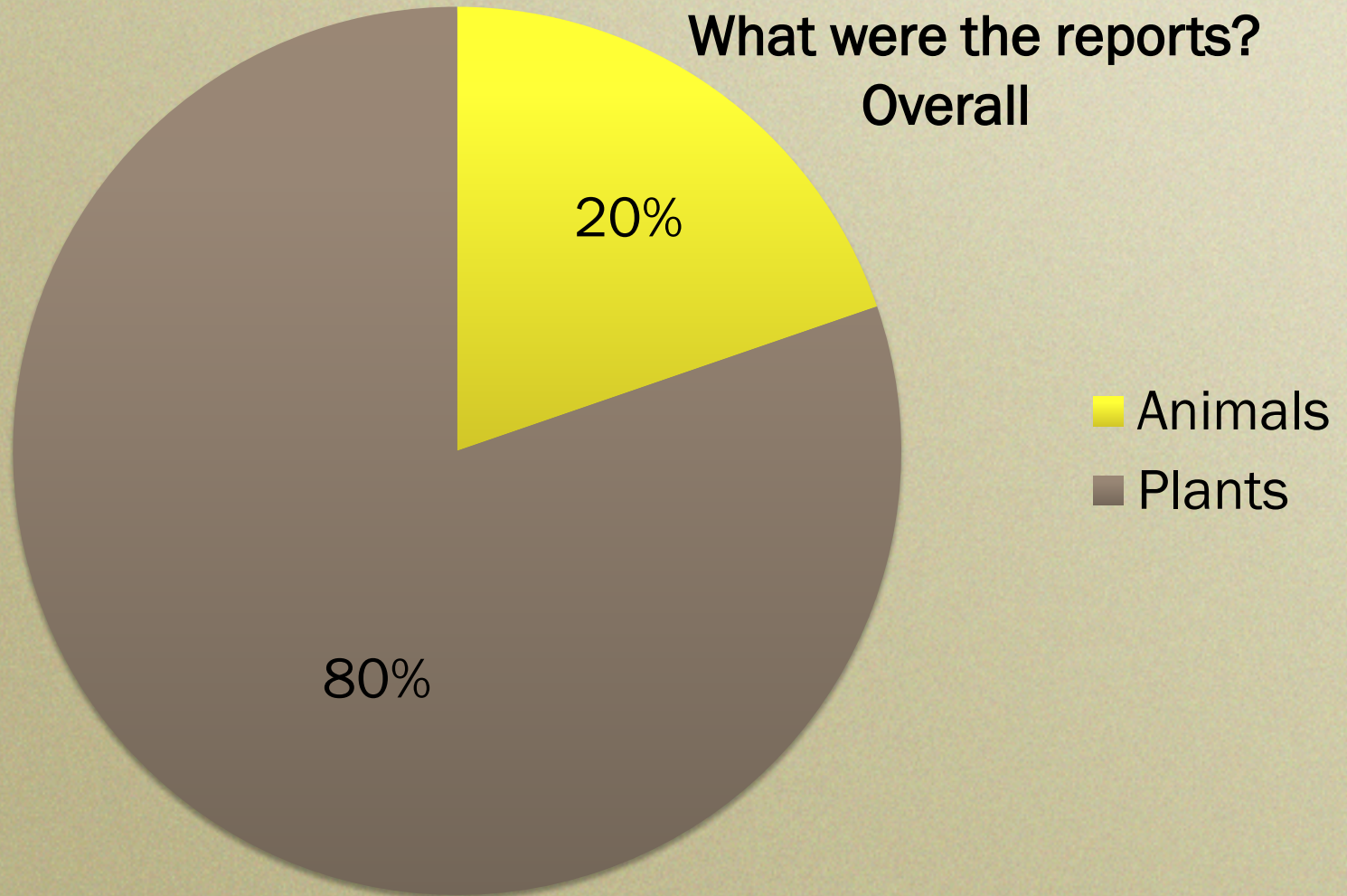
## 2015

- 773 Reporters
- 833 Web
- 675 iPhone
- 234 Android

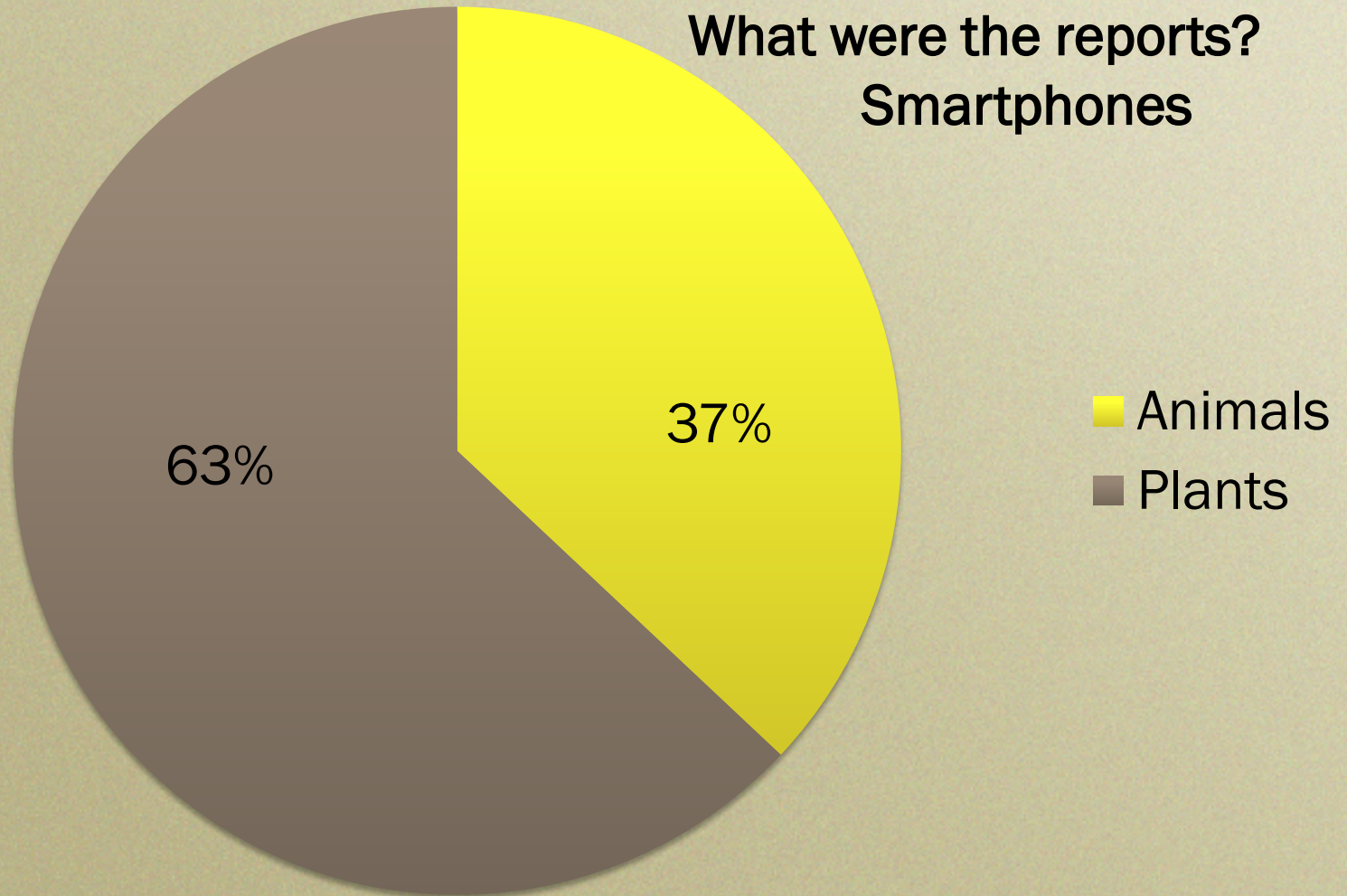
The screenshot displays the EDDMapS Florida website interface. At the top, the logo for EDDMapS (Early Detection & Distribution Mapping System) is visible alongside the Florida Invasive Species Partnership logo. A navigation bar includes links for Home, Report Sightings, Distribution Maps, Species Information, Tools & Training, My EDDMapS, and About, along with a sign out button. The main content area features a large image of a snake with a text overlay asking "Do you accept Bulk Data?" and providing instructions on data submission. To the right, a "Statistics" box shows 250,319 County Reports, 228,268 Point Reports, and 1,261 Species. Below this, a "Recent Reports in Florida" section lists several sightings, including a Burmese python in Miami-Dade County, a Cuban treefrog in Hernando County, a Puerto Rican Crested Anole in Martin County, and a Cuban treefrog in Volusia County. A black banner across the middle of the screenshot reads "EDDMapS Florida UPDATE". Below the banner, a section promotes the iPhone app, stating "IveGot1 brings the power of EDDMapS to your iPhone" and providing download links for the App Store and Google Play. To the right of this section, a box lists training resources: EDDMapS Training Video, REDdy: Reptile Early Detection and Documentation Observer Training Course, and Step-By-Step Instructions for Reporting an Invasive Animal Sighting in EDDMapS. At the bottom, a "Data Sharing Partners" section features logos for the Florida Department of Natural Resources and the Florida Natural Areas Inventory.

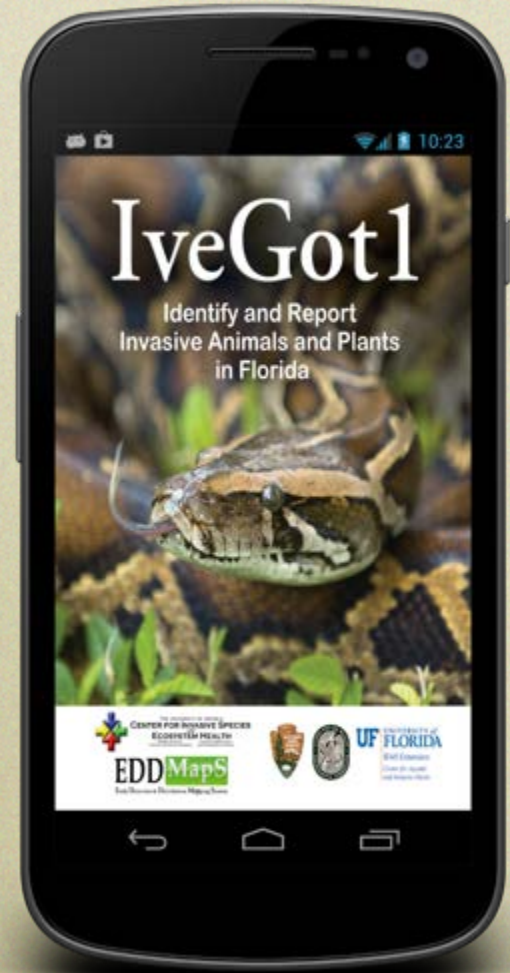
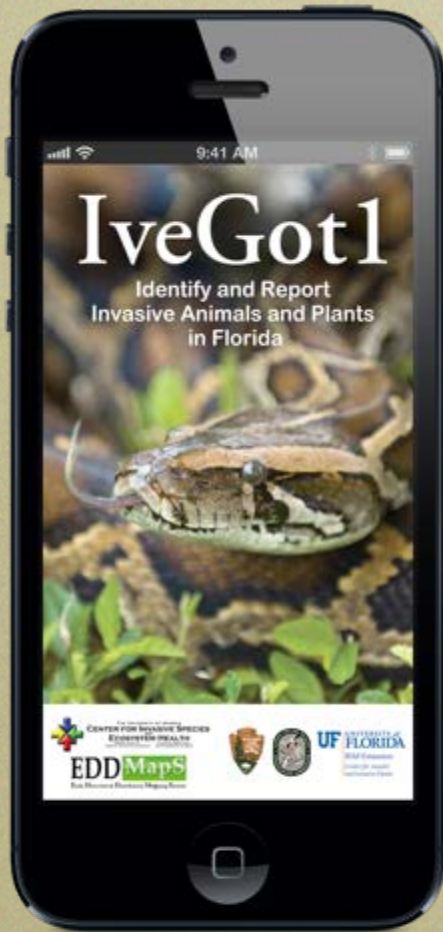


# EDDMapS Florida Statistics



# EDDMapS Florida Statistics





# Smartphone Apps Update



# Statistics

## iOS

- 27,894 downloads
- 77,155 upgrades
- 3.5 stars with 21 reviews

## Android

- 3,325 downloads
- 6,903 updates
- 4 stars with 30 reviews



# EDDMapS Español

Funded – Coming 2017



Puerto Rico





# Everglades Cooperative Invasive Species Management Area

WORKING TO PROTECT THE EVERGLADES FROM INVASIVE SPECIES

- HOME
- HOW YOU CAN HELP
- WHAT WE DO
- THE DIRTY DOZEN
- PUBLICATIONS & TOOLS
- INFORMATION FOR PARTNERS



AUSTRALIAN PINE  
*Casuarina spp.*



BRAZILIAN PEPPER  
*Schinus terebinthifolius*



AIR POTATO  
*Dioscorea bulbifera*

Have you spotted an invasive animal or plant in Florida? Please report all sightings to IVEGOT1!



1-888-IVE-GOT1

[www.IveGot1.org](http://www.IveGot1.org)

iPhone app

Android app

## South Florida is a hotspot for biological invasions.

Plants and animals from all over the world arrive in South Florida's ports every day. Some of these nonnative species escape from their cages, aquariums, or garden beds into the wild. Some are intentionally released. Some take well to the subtropical climate and rapidly increase and expand their populations. Invasive species now call South Florida home. Invasive species complicate and slow the recovery of ecosystems. Invasive species working together are a major threat to the biodiversity of our ecosystems.

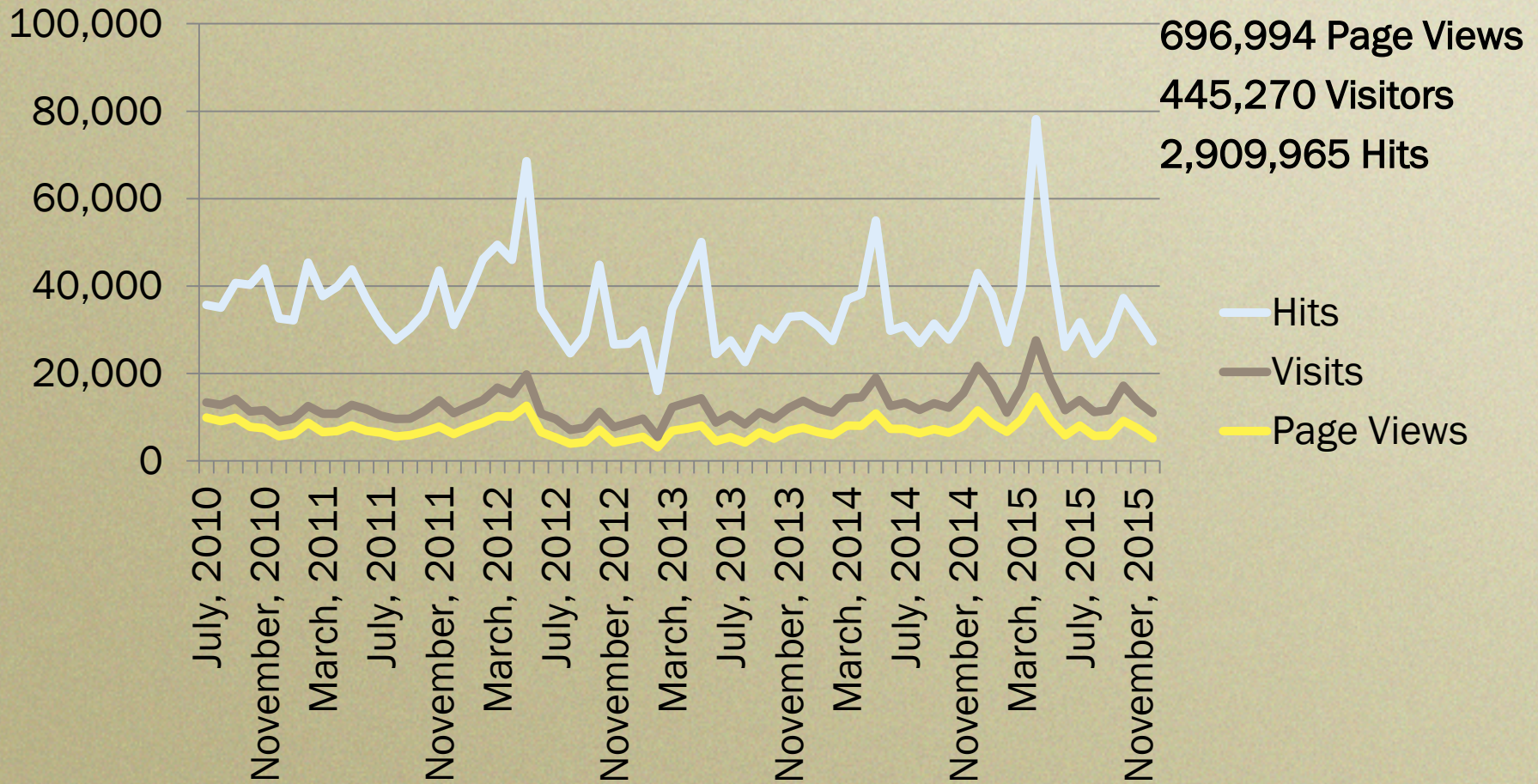
# WEBSITE UPDATE

Find out how you can help

Did you know?

Definitions

# ECISMA - Web Traffic



# Popular Pages (New Website)

- Home Page
- Dirty Dozen
- Species Pages
- Fish Roundup
- Publications and Tools
- Information for Partners
- What We Do
- How You Can Help



527 Followers  
655 Tweets

The Facebook logo, consisting of the word "facebook" in white lowercase letters on a blue rectangular background, is centered on the slide.

facebook.

380 likes



# THANKS

Try out the apps and website,

Send us feedback

[cbargero@uga.edu](mailto:cbargero@uga.edu)



# FWC's Nonnative Fish and Wildlife Program

- Prevention
- Early Detection
- Rapid Response
- Control/Management
- Education/Outreach



# Nonnative Species Reported

Python (22 feet)



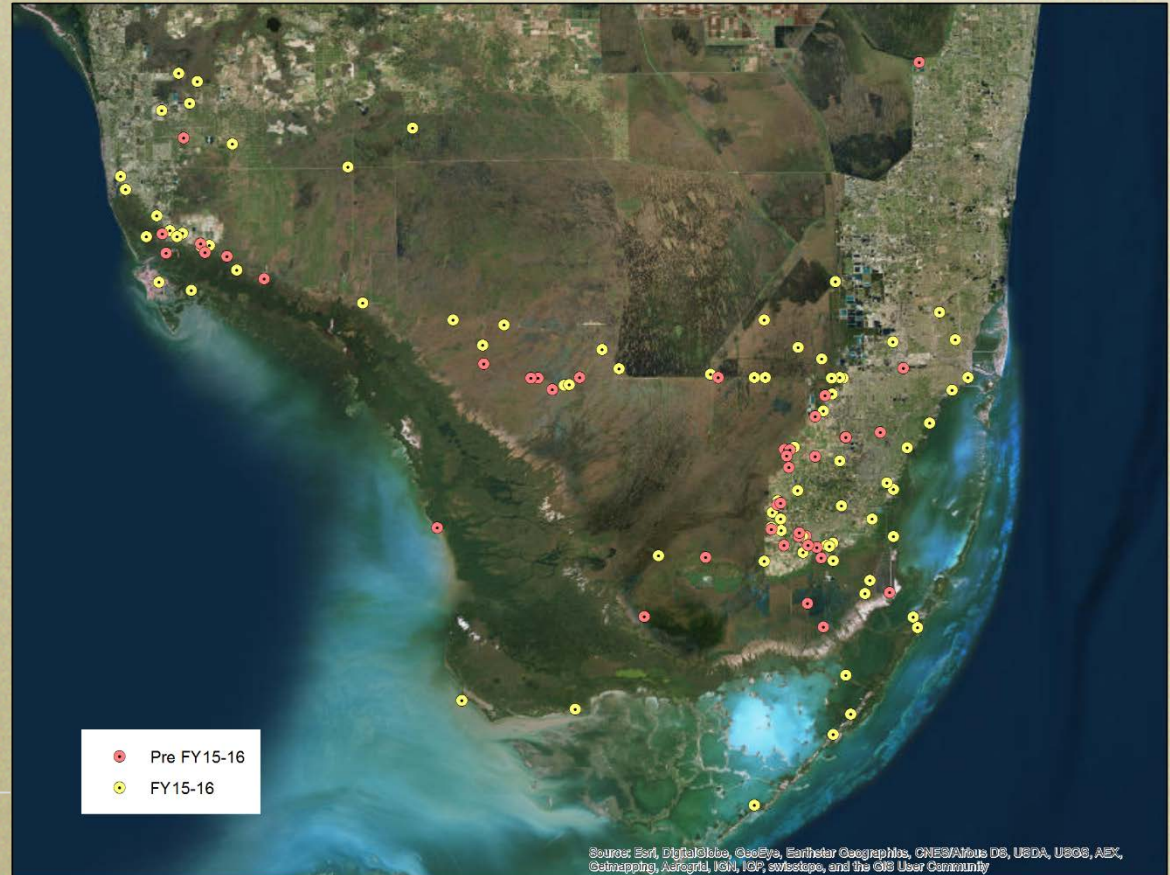
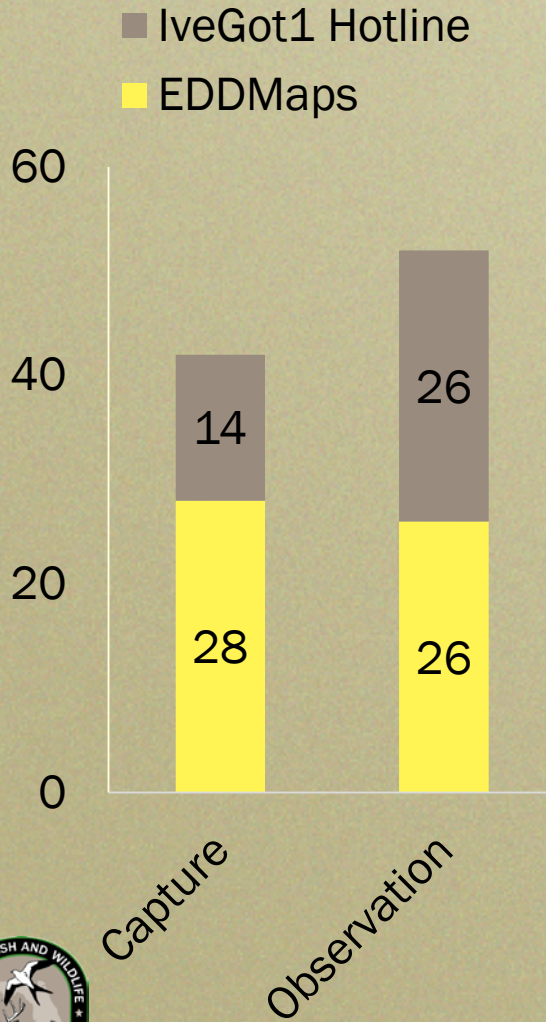
Black mamba



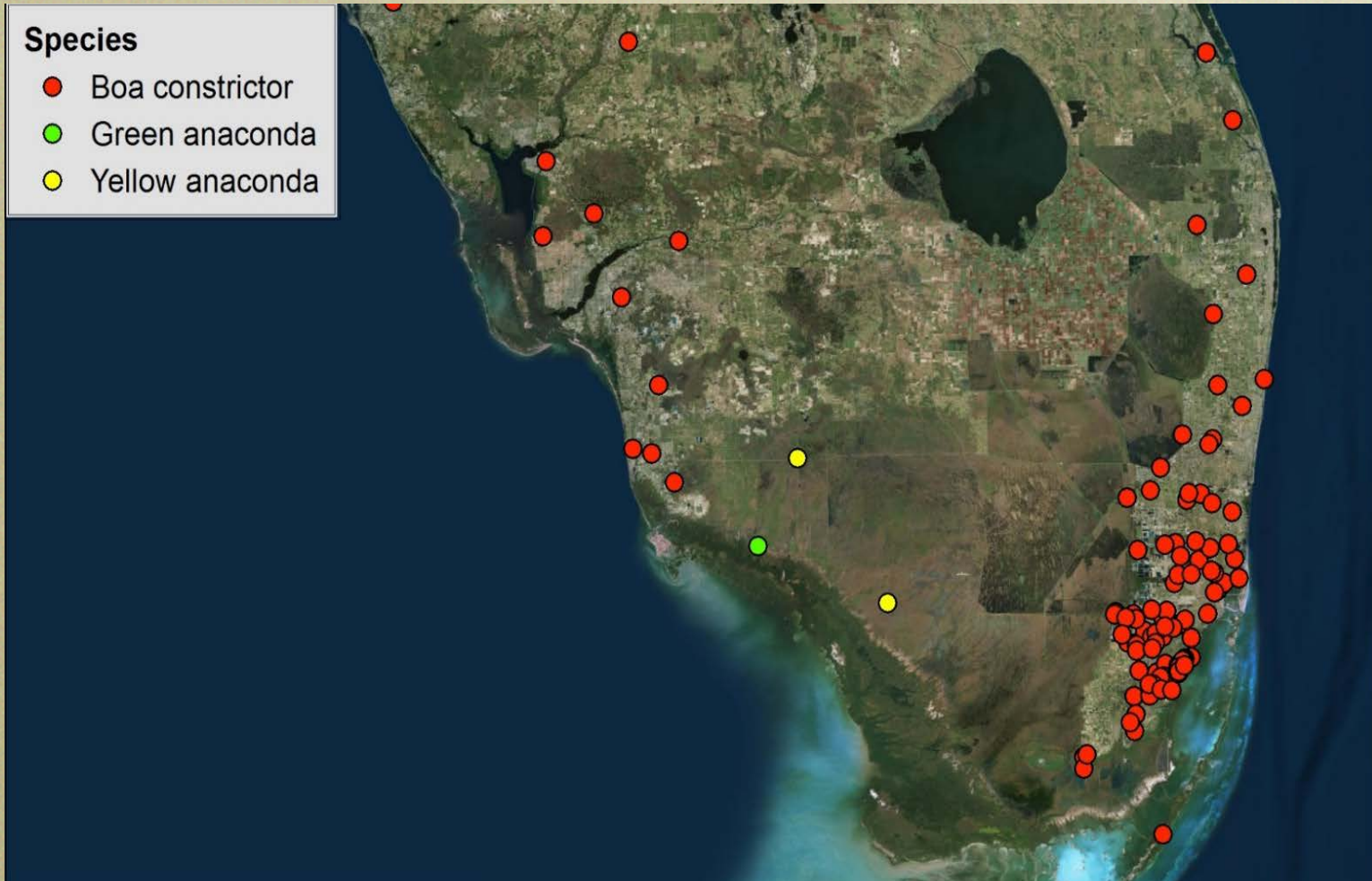
# Burmese Pythons



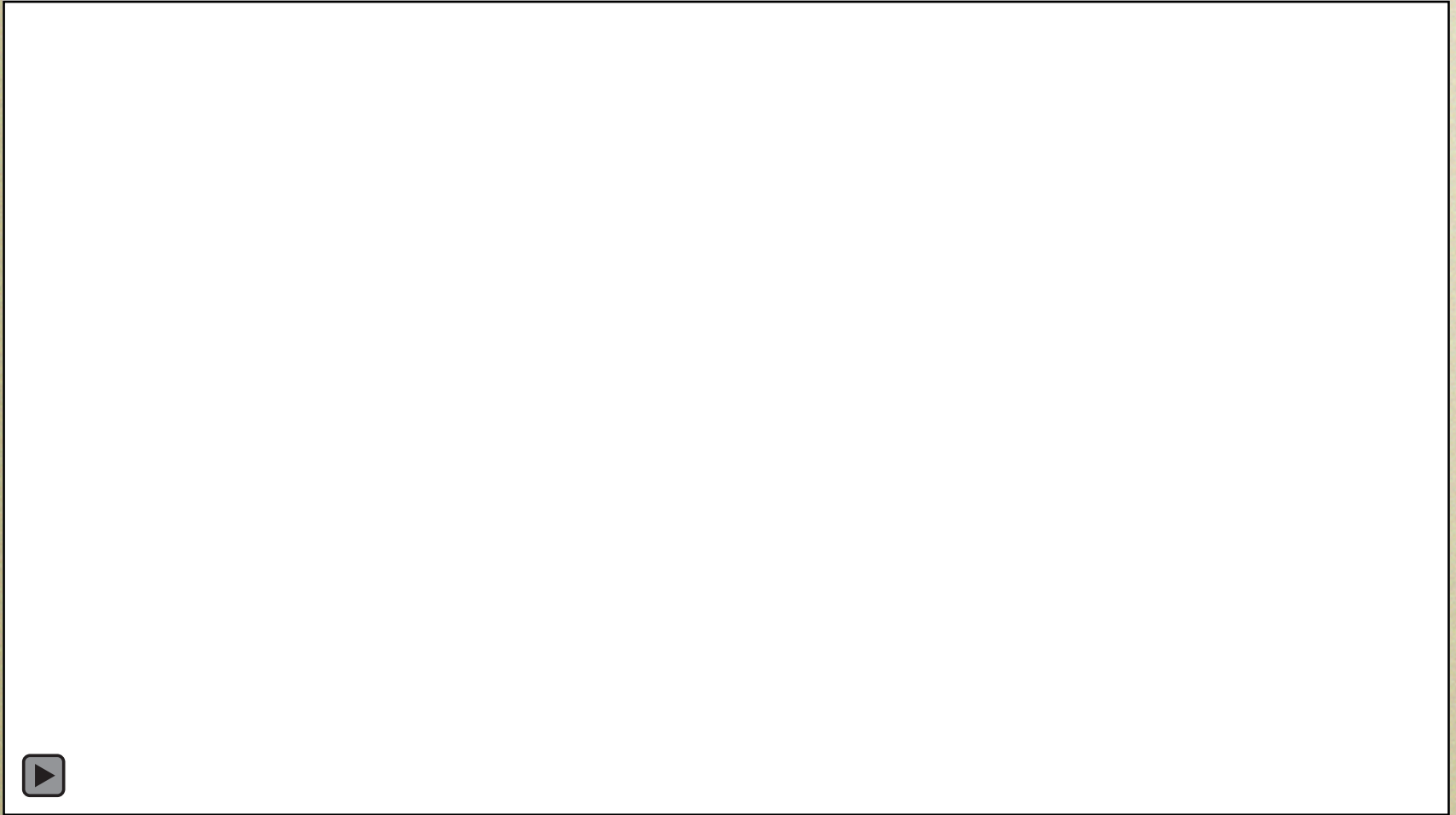
# Burmese Pythons



# Other Large Constrictors



# *Boa constrictor* – Rookery Bay



# Carpet Pythons - Miami

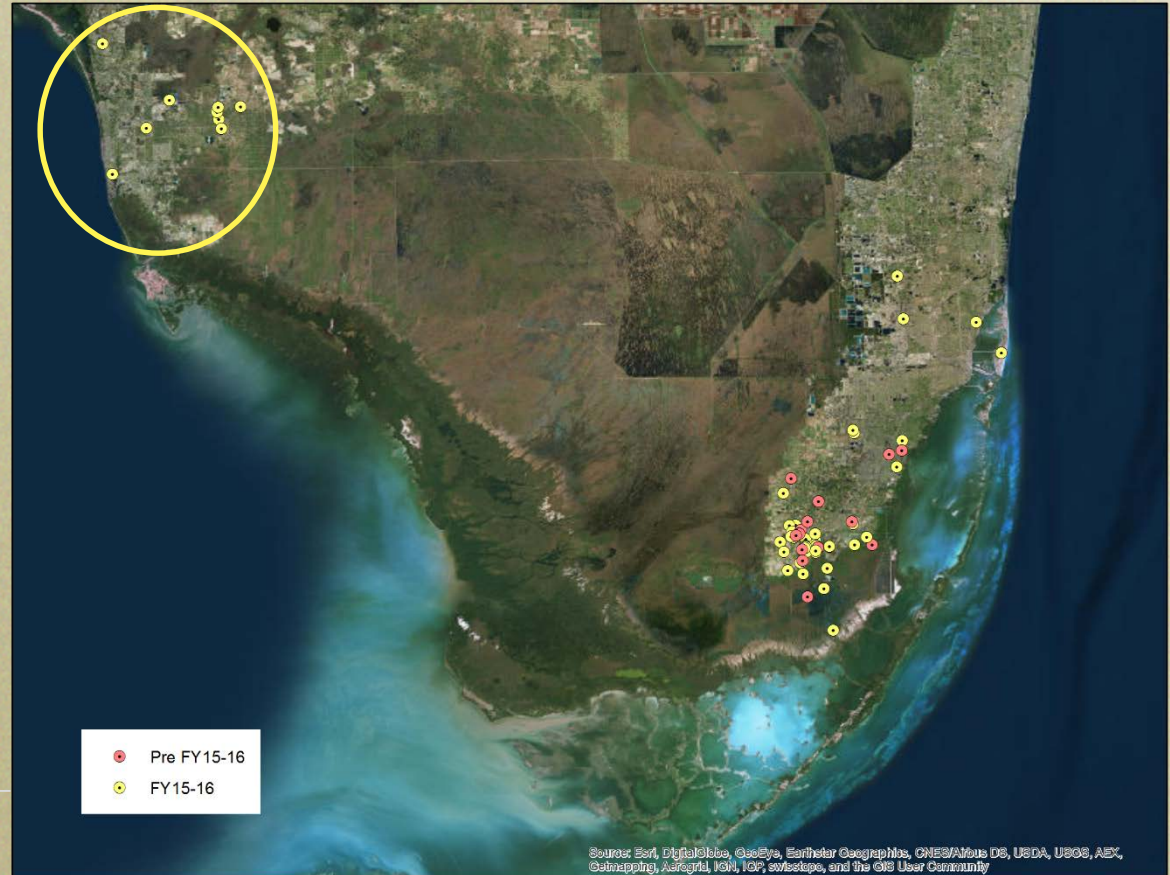
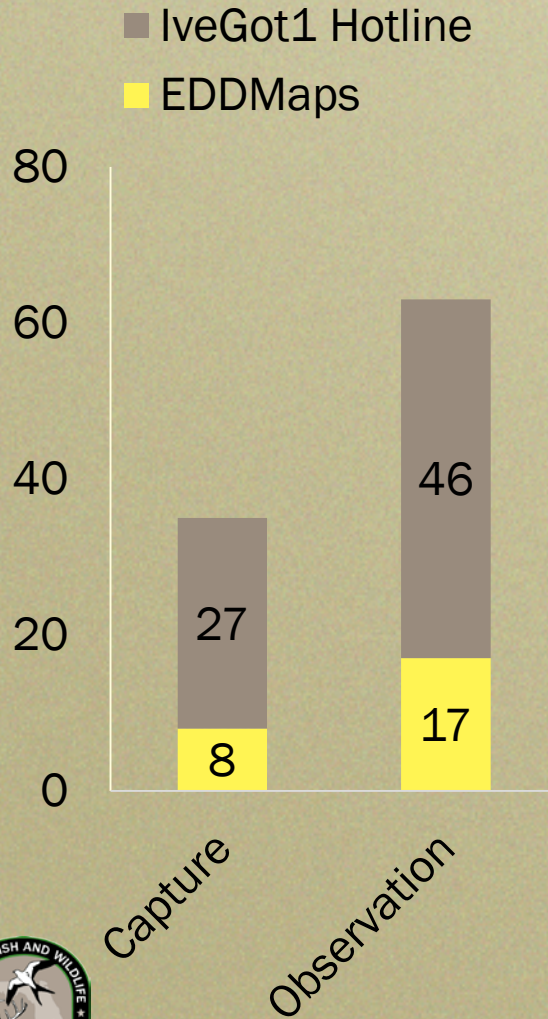
A second still on the slither?



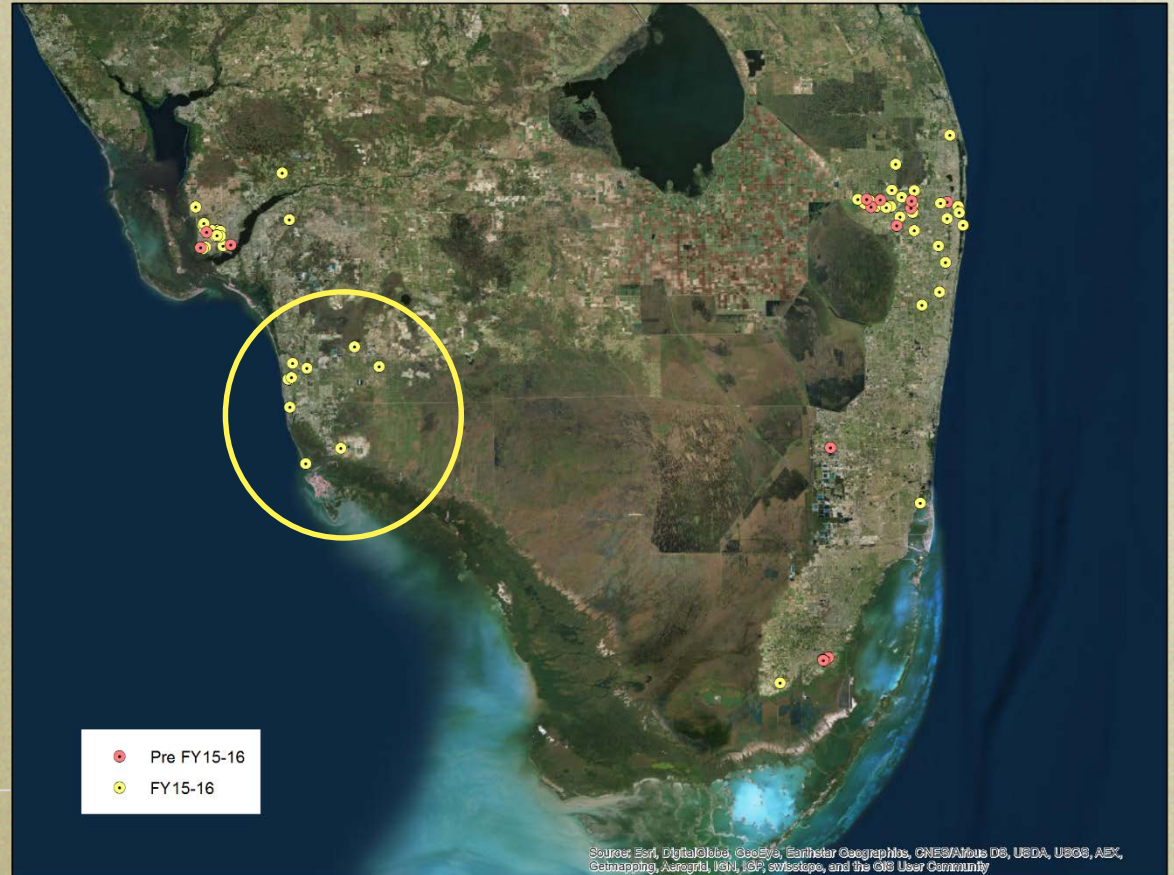
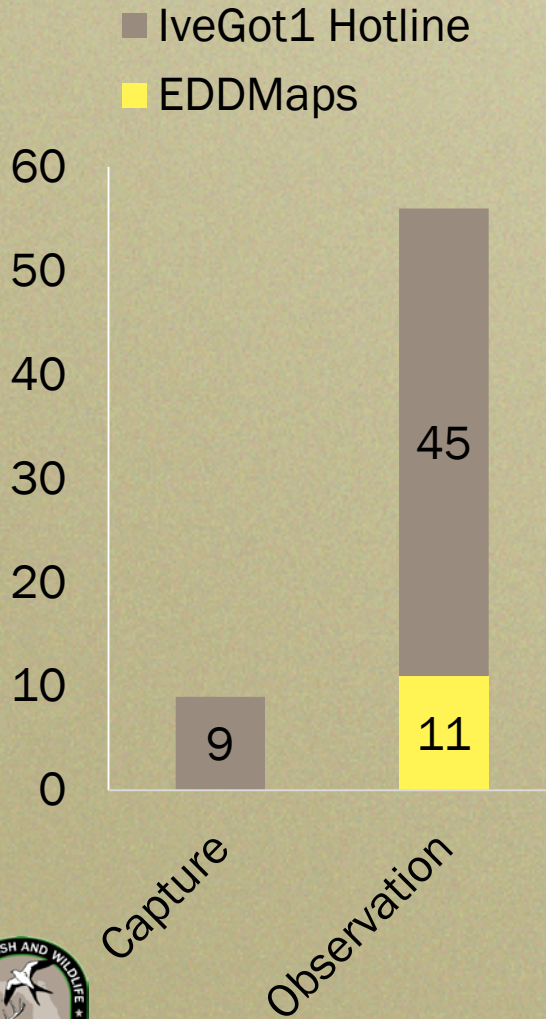
# Argentine Black and White Tegus and Nile Monitors



# Tegus in South Florida



# Nile Monitors



# Chameleons

- Three different species in Florida since 2010- Oustalet's, veiled and panther
- Two veiled confirmed on Marco Island



# Challenges/Future Directions

- Education/outreach (Wal-Mart release)
- New nonnative FWC staff
- Expand responder network
- Further prioritizing EDRR species



# Questions?

Jason Daniel Wagman

[Jason.Wagman@myfwc.com](mailto:Jason.Wagman@myfwc.com)

954-577-6409

3205 College Ave.

Davie, FL 33314



# Thank you!

