

# Florida's Introduced Monkey Populations

Dr. Jane Anderson  
Postdoctoral Research Associate  
University of Florida Department of Wildlife  
Ecology & Conservation



EVERGLADES CISMA

# Non-Human Primate Introductions

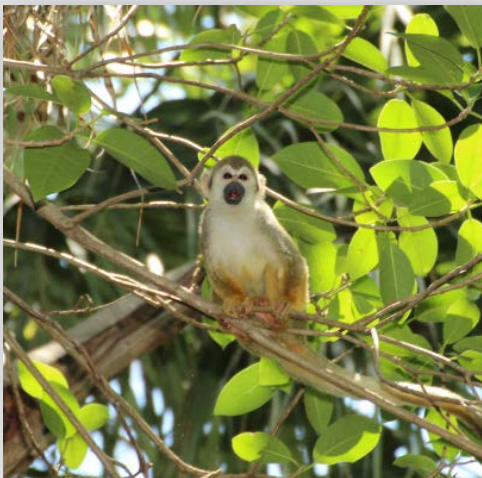
- Global introductions since the 1500s
- Purposes:
  - Conservation
  - Research
  - Tourism



**EVERGLADES CISMA**

# Non-Human Primate Introductions

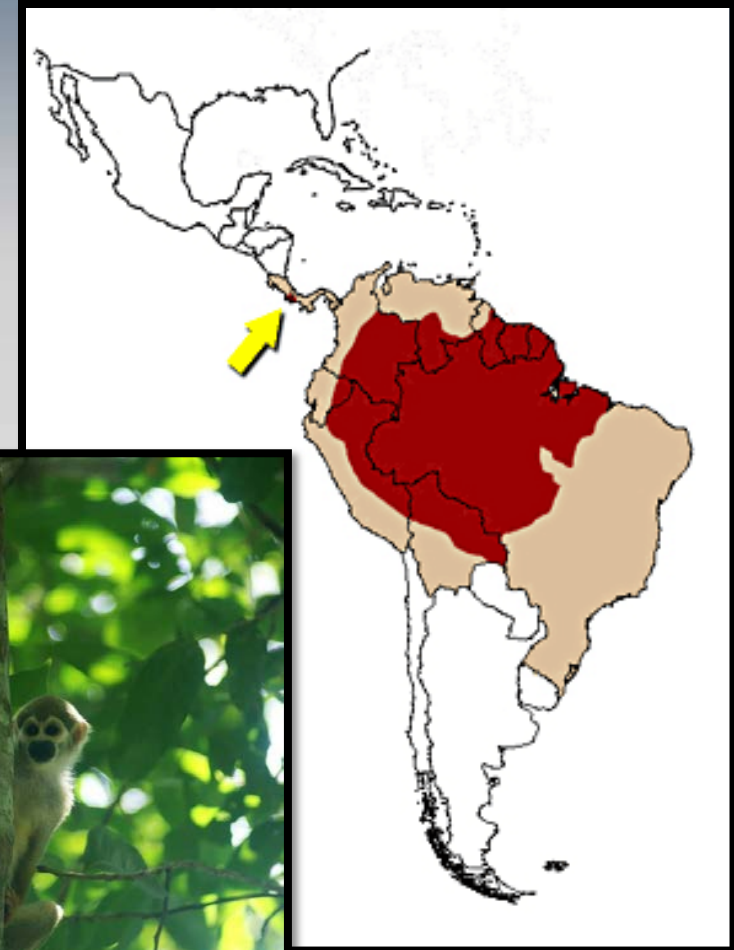
- At least 10 NHP species introduced in U.S.
- Three sp. with est. pops. in FL
  - Squirrel monkey (*Saimiri sp.*)
  - Vervet monkey (*Chlorocebus sabaesus*)
  - Rhesus macaque (*Macaca mulatta*)



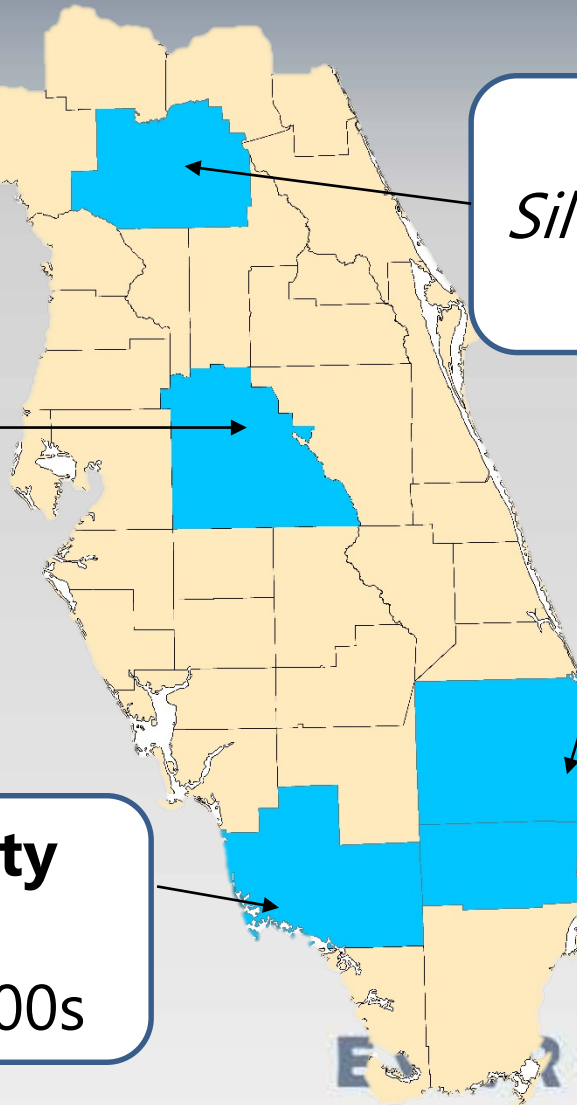
# Squirrel Monkeys

(*Saimiri sp.*)

- **Primarily insectivorous-frugivorous**
  - **Also small vertebrates, bird eggs, vegetation**
- **Primarily arboreal**
- **Habitat generalists**
- **Introduced pop. in Brazilian Atlantic Forest**



# Squirrel Monkeys in Florida



## **Marion County**

*Silver Springs State Park*  
1960s – 1970s

## **Polk County**

*Masterpiece Gardens*  
1960s – 1980s

## **Palm Beach County**

*FL Atlantic University*  
1970s

## **Collier County**

*Naples*  
1960s (?) – 2000s

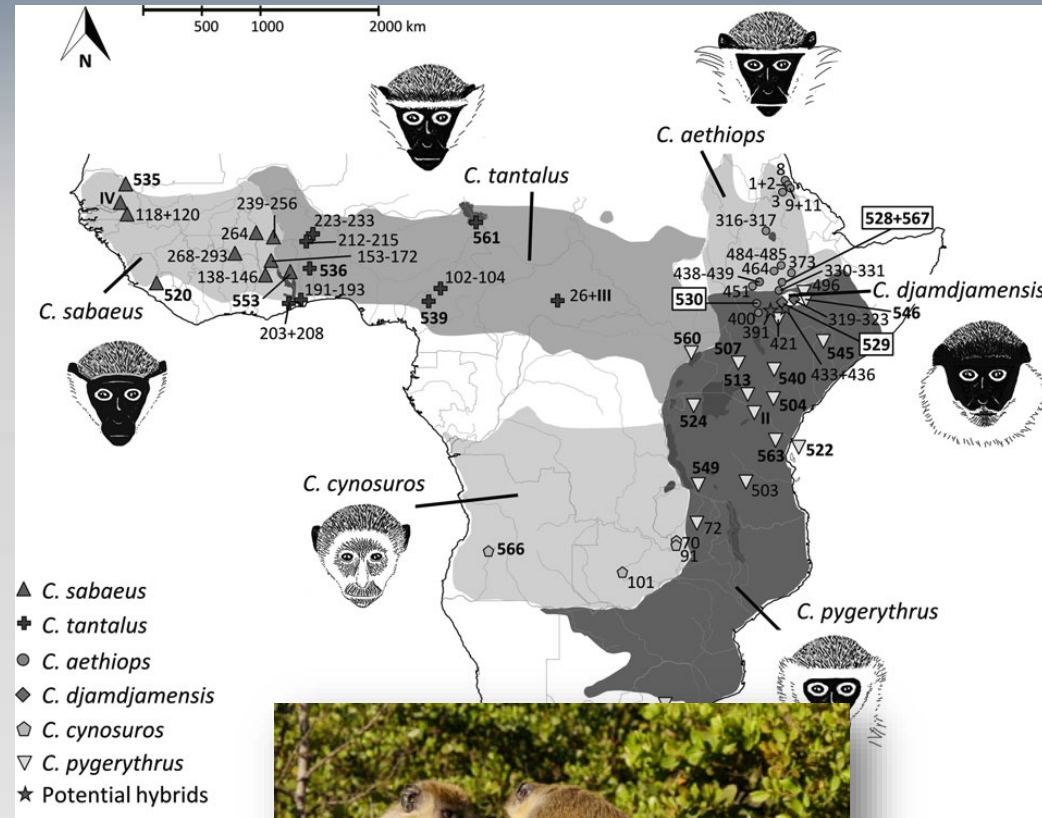
## **Broward County**

*Bartlett Estate*  
1970s - Present

# Vervet Monkeys

## (*Chlorocebus sabaesus*)

- Aka “green monkey”
- Omnivorous
- Primarily terrestrial
- Introduced pops. in St. Kitts, Nevis, & Barbados



# Vervet Monkeys in Florida

- Released from small research facility?
- 2017 census:  
39 animals among 3 troops
- Little reported pop change since 1990s



**Broward  
County**  
*Dania Beach*  
1950s-Present



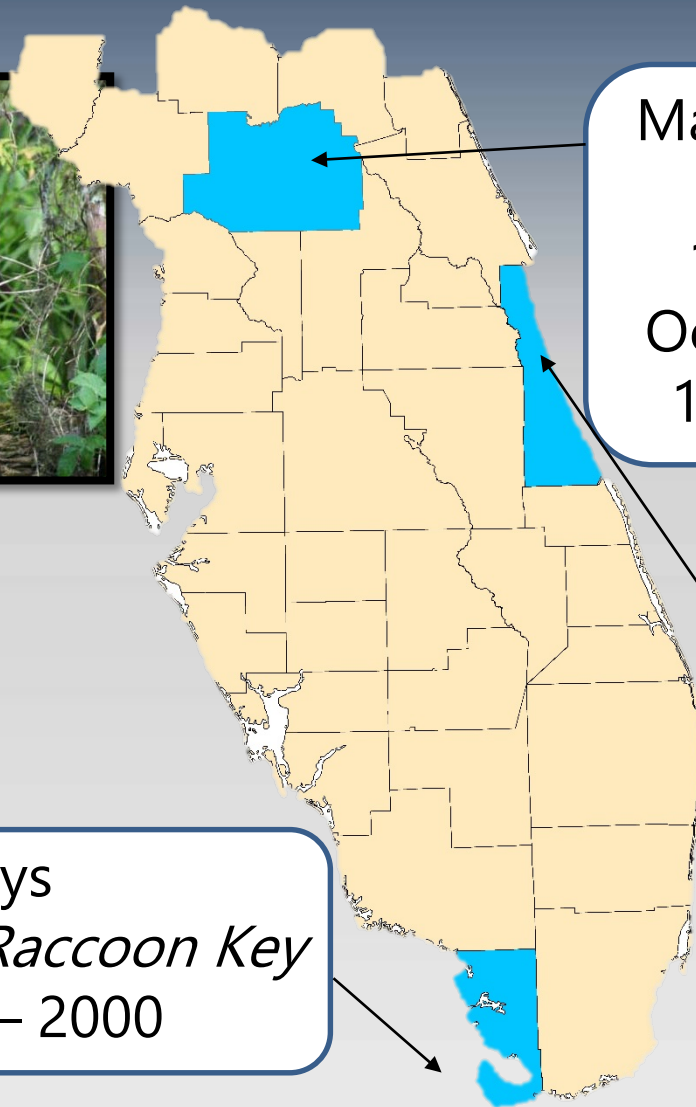
# Rhesus Macaques

*(Macaca mulatta)*

- **Omnivorous**
  - Primarily generalist herbivores
- **Arboreal & terrestrial**
- **Sea level to 4,000m**
- **Introduced pops.**
  - South Carolina
  - Puerto Rico



# Rhesus Macaques in Florida



Marion County  
*Silver Springs*  
1930s-Present  
Ocklawaha / ONF  
1970s - present

Brevard County  
*Titusville*  
1976 – 1990s

Keys  
*Key Lois & Raccoon Key*  
1970s – 2000

# Rhesus Macaques in Florida

- **Potential impacts**
  - Impact bird populations through nest predation



MOULTRIE



82°F

MOULTRIEC04

04 JUL 2014 12:47 pm

# Rhesus Macaques in Florida

- **Potential impacts**
  - **Dangerous for tourists**
    - **Aggressive behavior**
    - **Zoonotic disease**



# Rhesus Macaques in Florida

- **Potential impacts**
  - Population continuing to grow & expand



# Conclusions

- **Florida's monkey populations vary in ability to establish and potential impacts**
- **Squirrel monkeys likely not problematic**
- **Vervet monkeys merit further monitoring**
- **Rhesus macaques merit further research**
  - **Management intervention necessary to curtail population growth**

# Questions?

- **Collaborators:**

- Steve Johnson, Mark Hostetler, Darryl Heard, Bill Pine, Michael Andreau, Madelon van de Kerk, Katherine Saylor, Carisa Boyce, Sam Wisely, Christina Romagosa

[www.ecojane.org](http://www.ecojane.org)



**EVERGLADES CISMA**