

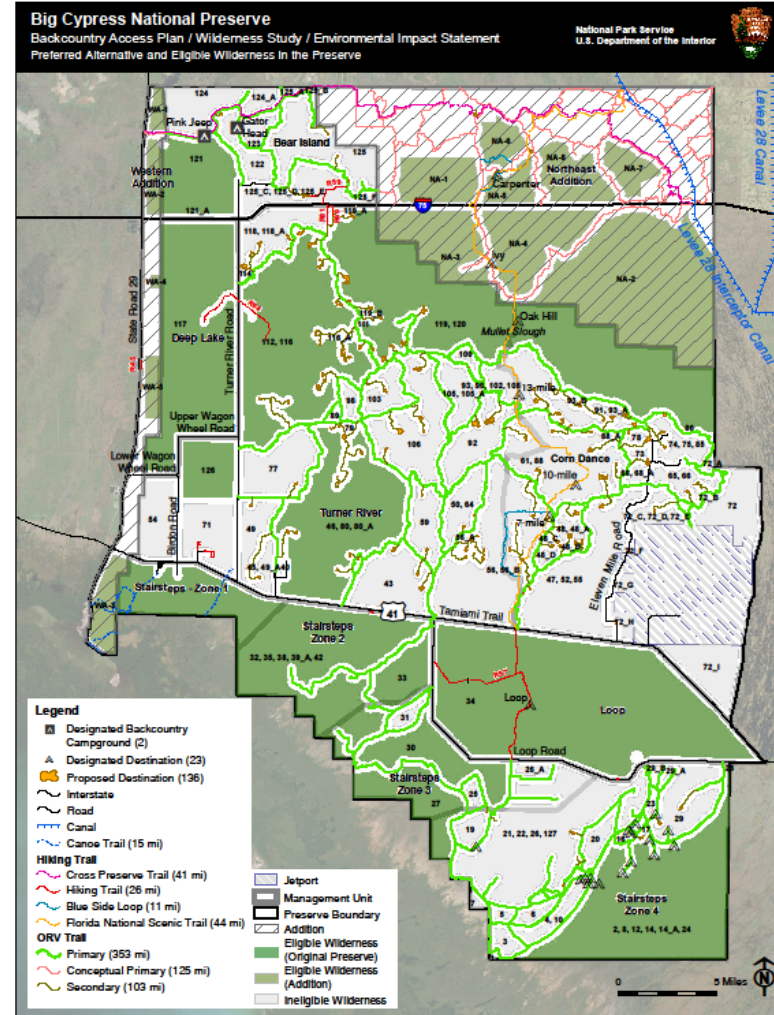
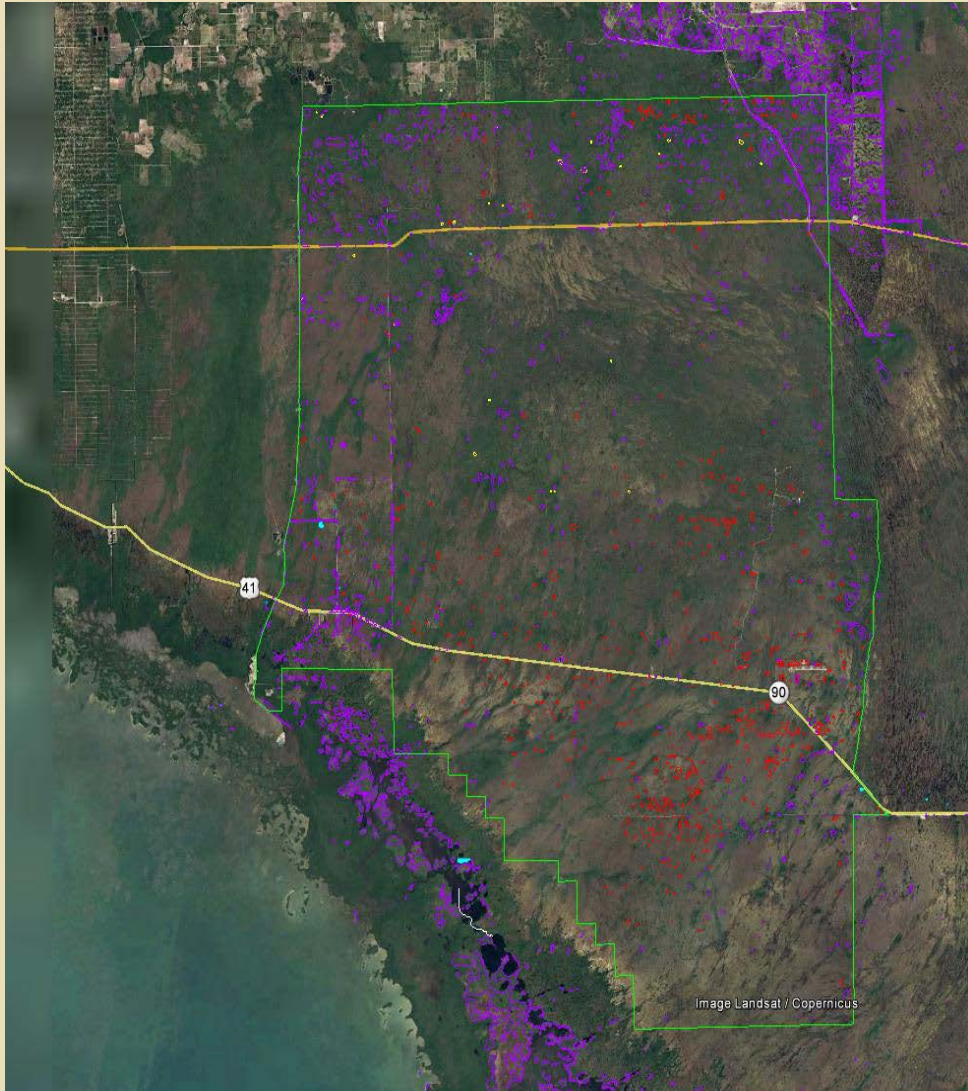


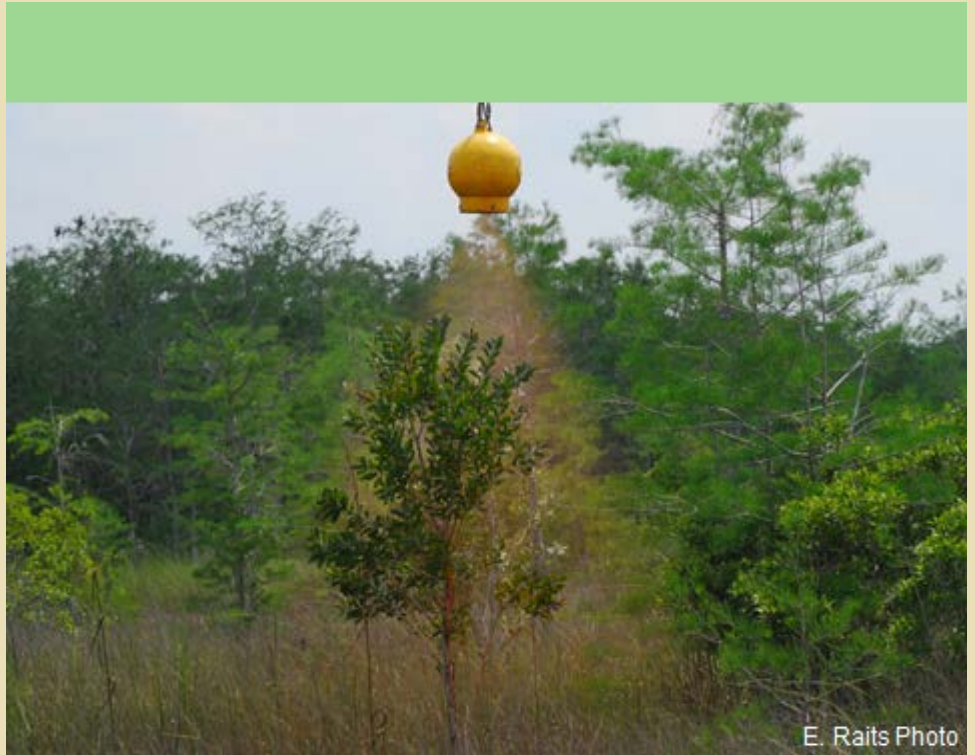
# Everglades Cooperative Invasive Species Management Area

2018 EVERGLADES INVASIVE SPECIES SUMMIT

## Big Cypress National Preserve

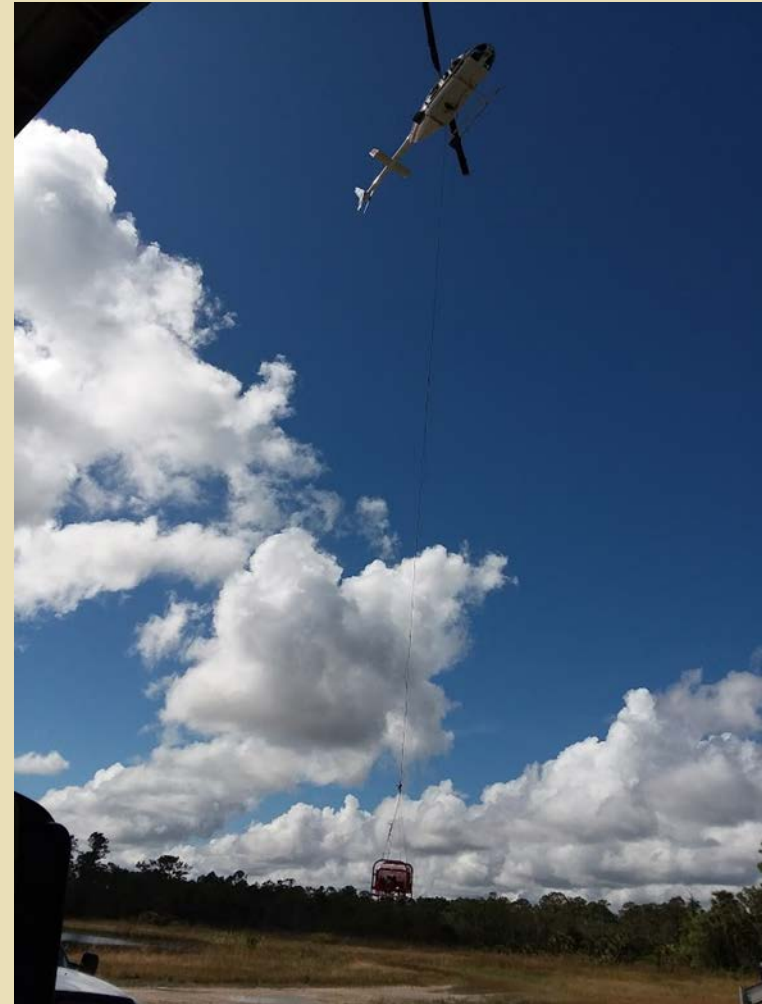
Aerial Spot Spraying 2018







# Aerial Spot Spray System



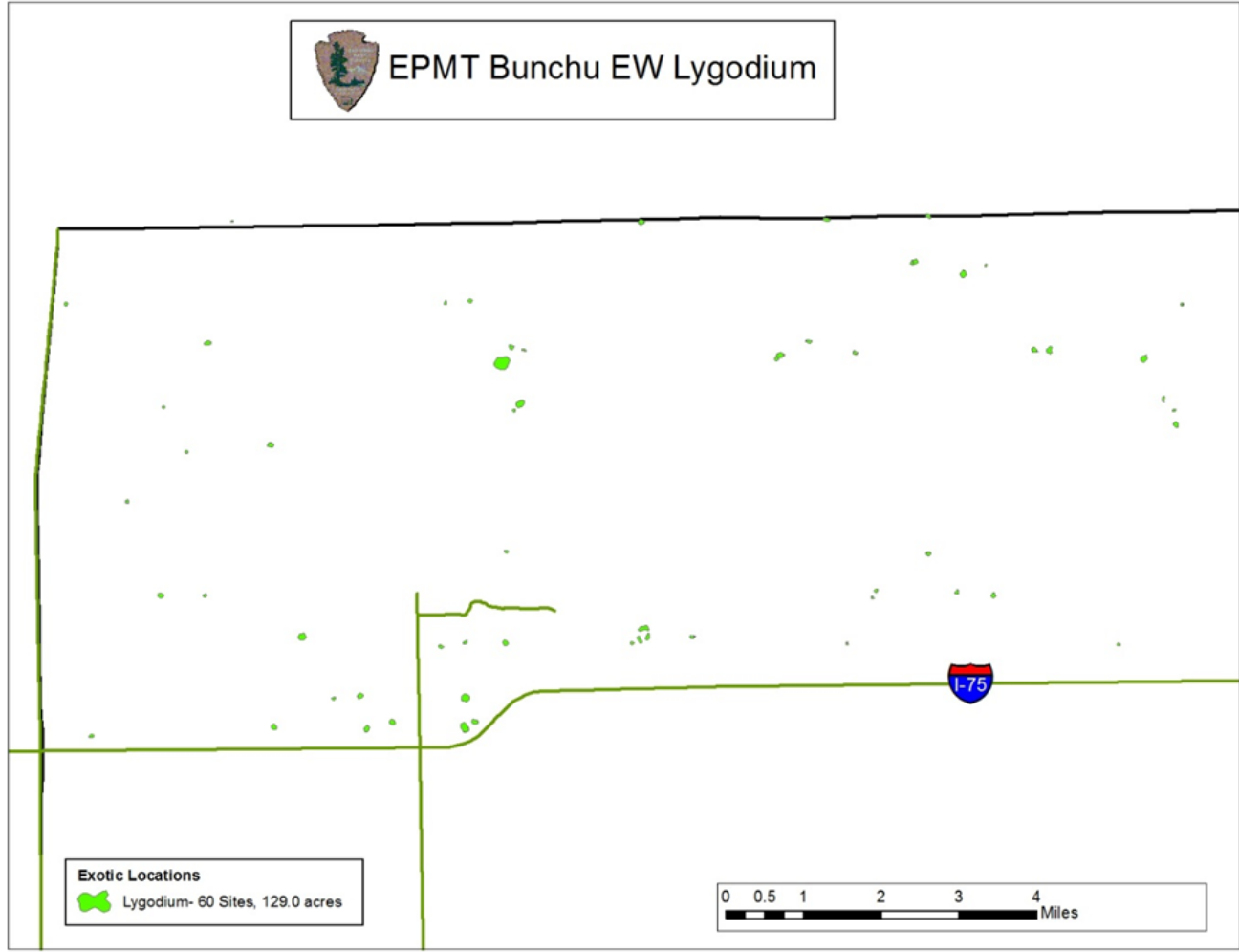


# 2018 Aerial Spot Spray Projects

- CowParBun:
  - Bunchu: \$150k (Florida/Caribbean EPMT)
  - Cowbell BAR: \$145k (DOI)
  - Parliament BAR: \$20k (DOI)




### EPMT Bunchu EW Lygodium









**Exotic Locations**  
Lygodium- 60 Sites, 129.0 acres

0 0.5 1 2 3 4 Miles



 Cowbell BAR  
Proposed Aerial Treatment Sites

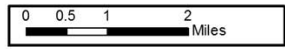
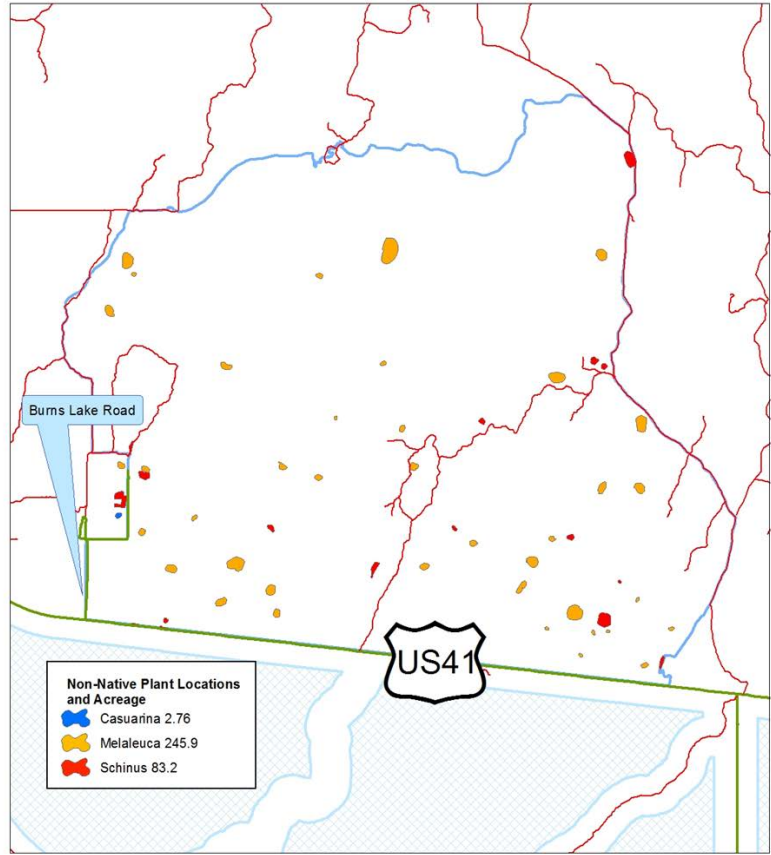


-  Cowbell Fire Perimeter
- Cowbell Fire Non-Native Plant Locations**
-  Lygodium 32.0 acres
-  Melaleuca 42.1 acres
-  Schinus 34.5 acres
-  Pre-Award Treatments made, 2018
-  Roads and Highways





 Parliament Fire BAR 2018  
Aerial Spray Sites





- Herbicide: (50 gal mix)
  - 2% Garlon 3a/Renovate
  - 2% MSO
  - Water Conditioner (1 pt)
  - Brandt Red Dye (1 pt)





# Lygodium





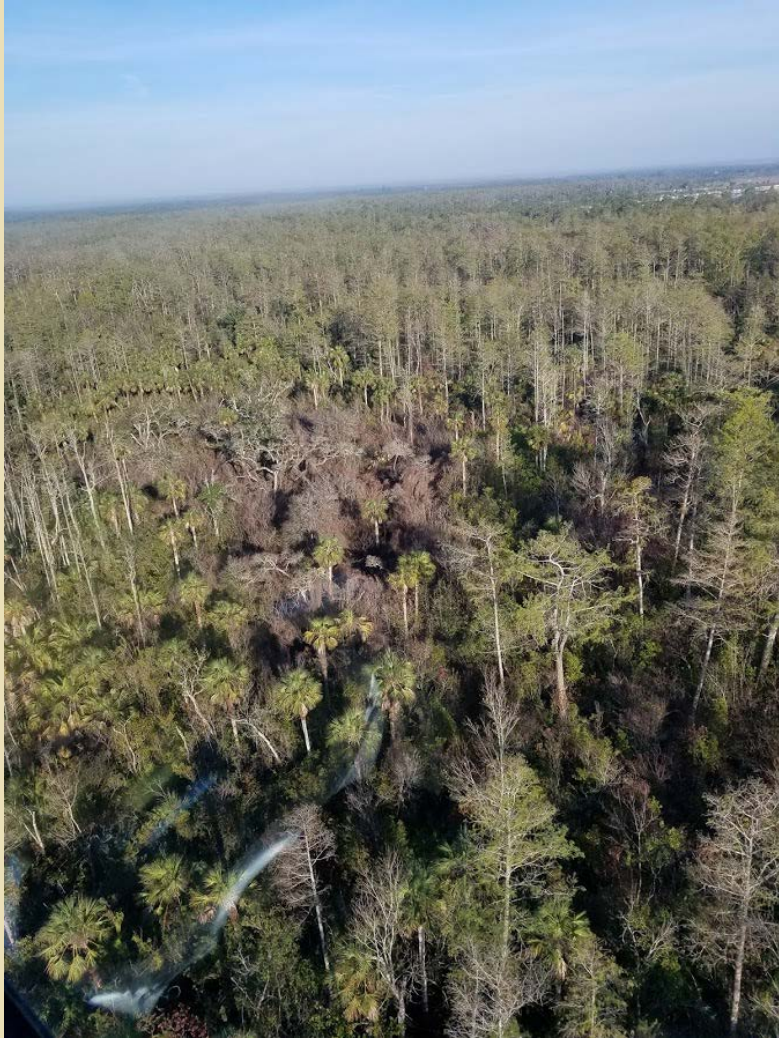








# Lygodium 2017





# Melaleuca 2017





# Melaleuca 2017



