

# Everglades Cooperative Invasive Species Management Area



## The Conehead Termite and other Non-native Invertebrates

Katie Tenn  
FDACS



[Katherine.Tenn@freshfromflorida.com](mailto:Katherine.Tenn@freshfromflorida.com)



# Conehead Termite Program Update

- **2001:** First discovered in Broward Co (Dania Beach)
- **2003 to 2010:** Aggressive interagency eradication campaign - Believed successful.
- **2011:** Large colonies discovered outside previous survey area
- **2012:** FDACS rebooted eradication efforts
- **2016:** Second large population discovered in Pompano Beach
  - Genetically the same population, result of human spread
- **2019:** Out of a previous total of ~55 acres of infested land, *only one 3 acre* property remains with small residual population



# Our Goals Here Today

- Increase awareness
- More eyes in the field
  - What to look for
  - Where to report
- Please share the knowledge to continue the current non-native eradication success story!



2018 Invasive Conehead Termite IPM Working Group field trip



# What is a 'conehead'?

- *Nasutitermes corniger*
- Arboreal termite
  - Nest in trees, on the ground, in debris, etc.
- Native to South/Central America
- Eat anything made of cellulose
  - Very broad feeding preferences



FDACS photo

Conehead termite queens and soldiers



# How to Identify a Conehead Termite



Photo © B.L. Thorne

Soldier

Conehead soldiers have dark, teardrop-shaped heads

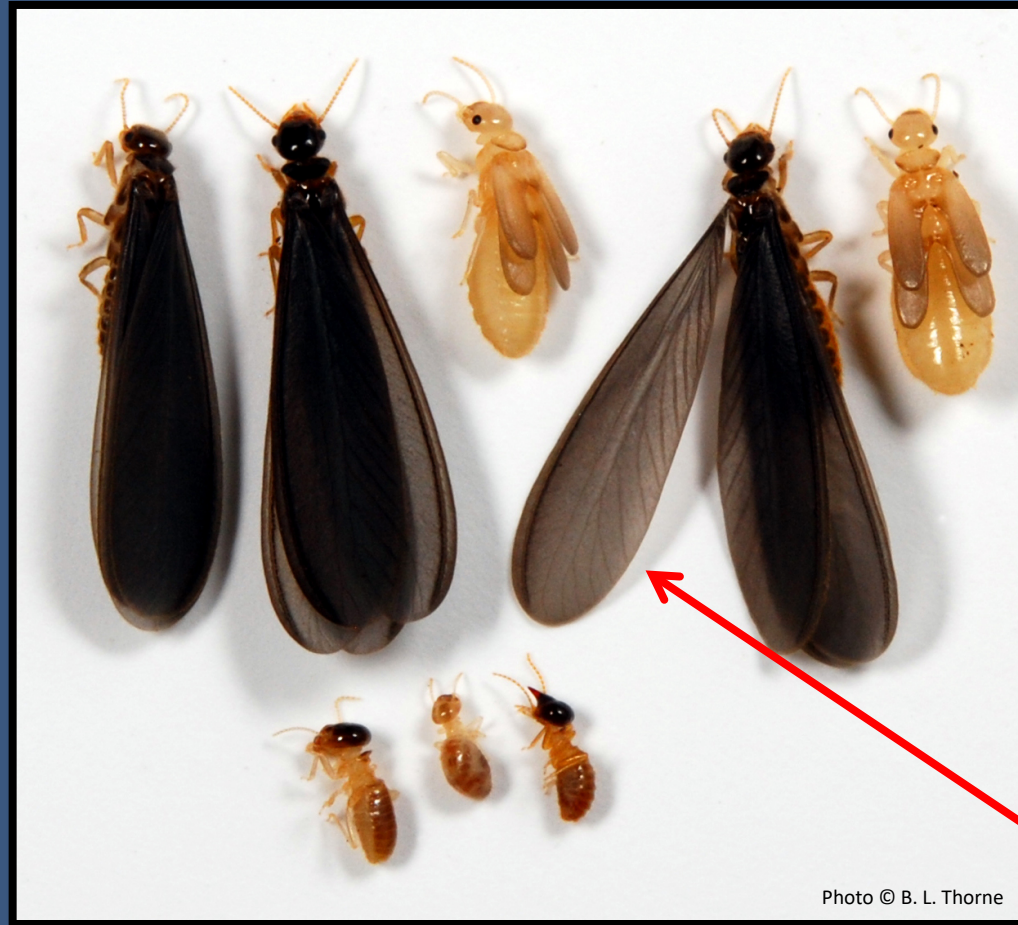


Photo © B. L. Thorne



Photo © B.L. Thorne

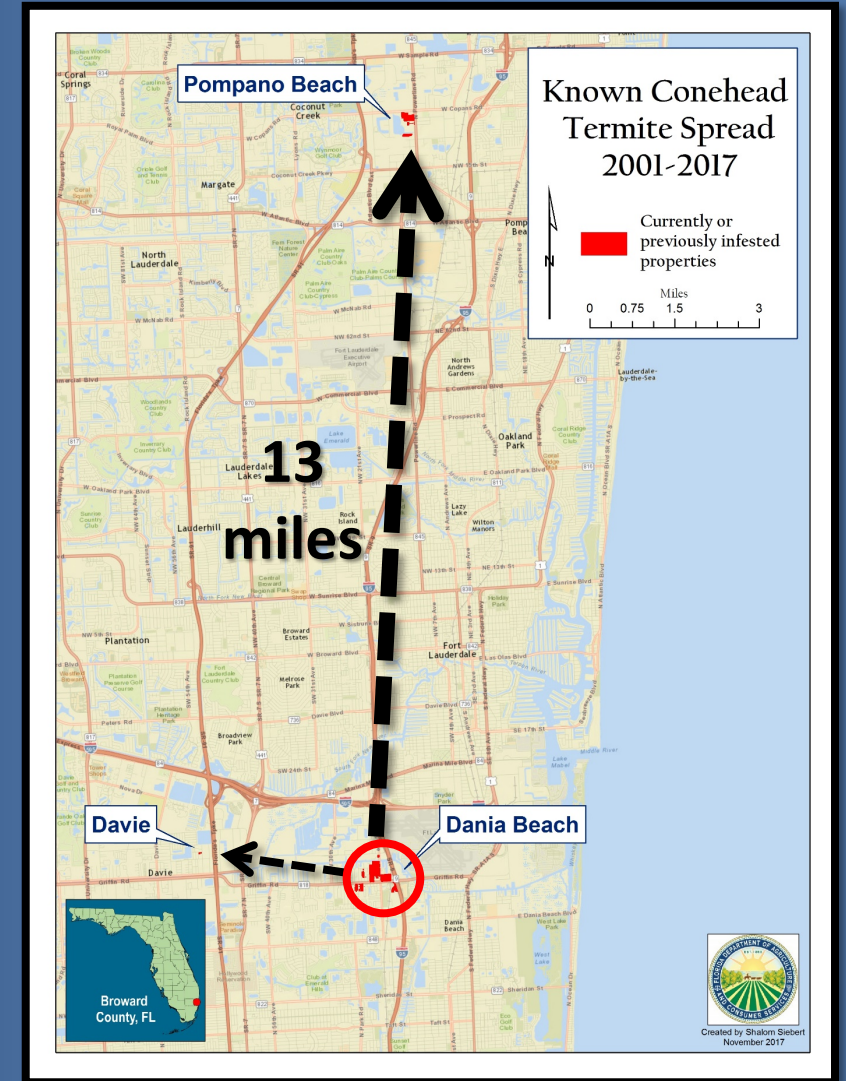
Worker

Conehead swarmer have dark, charcoal-colored wings



# Eradication is possible

- Major Risks
  - Could be huge threat to our agriculture and native ecosystems if spread continues
  - Human transport is big issue
    - Vegetative debris
    - Bulk trash
  - Hidden young colonies
    - Several years before colony is big enough to easily locate
- Achievable goal - *We can find them*
  - Nest above ground
  - Build conspicuous tunnels





# How to Identify Coneheads in the Field

Tunnels ~1/2 in wide

Hollow, mud-like tubes or  
“straws”

Hold their shape when broken





# How to Identify Coneheads in the Field

Carton nests can be  
“easy” to locate





# How to Identify Coneheads in the Field

Or more difficult to locate

- Hidden in and under objects, under vegetation, in root systems or in debris piles



FDACS photo



FDACS photo



FDACS photo



# How to report possible sightings

## **REPORT CONEHEADS!**

- ✓ Call, email or talk to the FDACS Conehead Team
- ✓ FDACS DPI Helpline – 888-397-1517
- ✓ UF-IFAS Davie – Termite Research Group

**Ask us about group presentations and available outreach materials for your organization**

***FreshFromFlorida.com and search “conehead”***

More info and online conehead report form available



A few other non-native  
invertebrates to watch for



# Quick Update: GALS

## Giant African Land Snail

*(Achatina (Lissachatina) fulica (Bowditch))*

### Cumulative GALS Program Stats:

- Since 2011 - 32 identified core areas (31 in Miami-Dade and 1 in Broward)
- In 2012 averaged 3,600 snails collected per month
  - Total of 168,434 snails collected to date

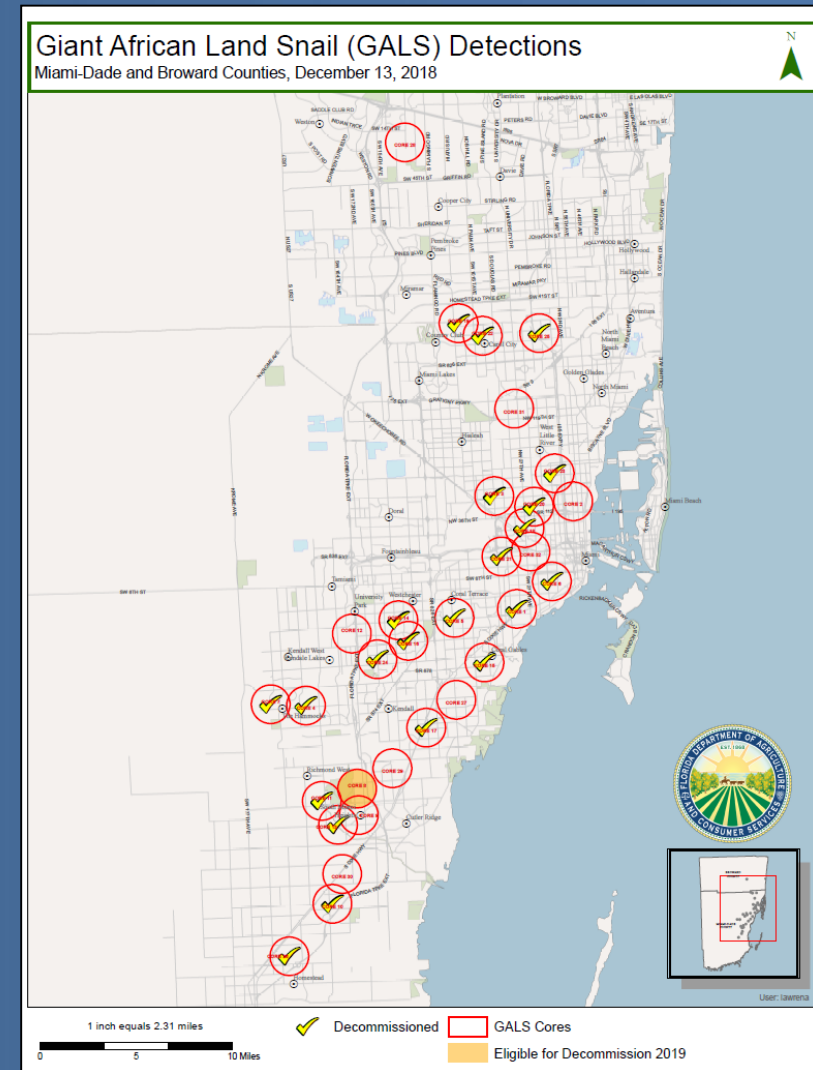




# Quick Update: GALS

## Current 2019 GALS Update:

- Only 10 current active cores (9 in Miami-Dade and 1 in Broward)
  - 22 cores have been decommissioned (36 months since last GALS find)
- *No live snails collected since December 2017*
- Surveys and outreach ongoing

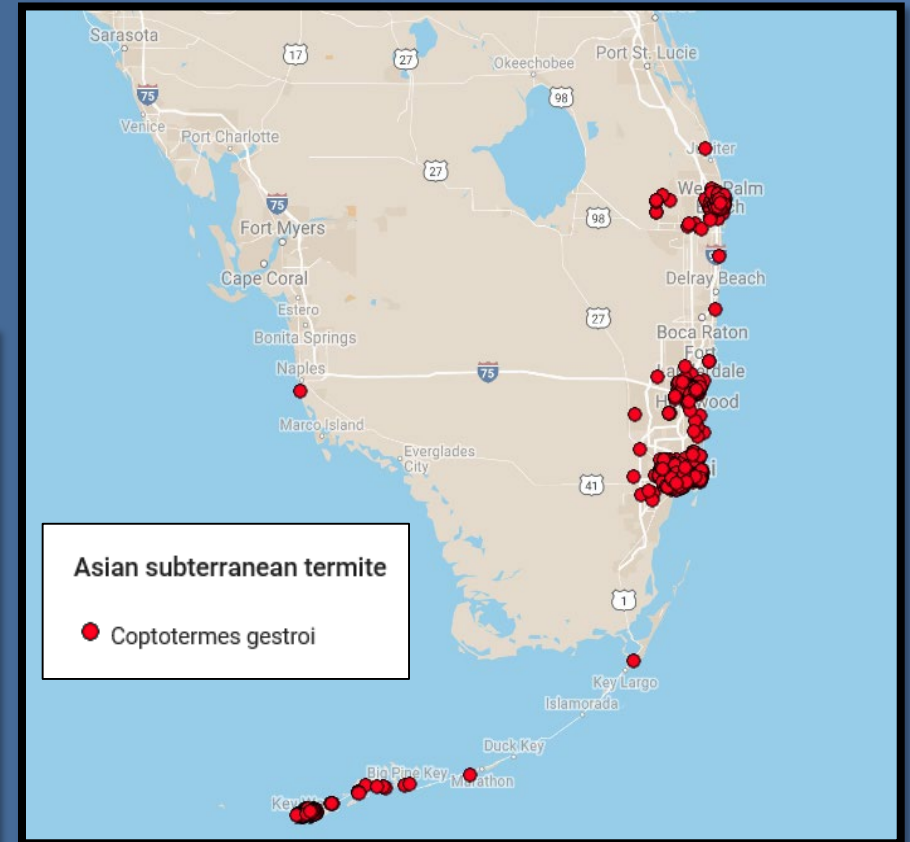




# Quick Update: Asian Subterranean Termite

## *Coptotermes gestroi*

- Growing pest of structures and landscapes in South Florida
- Native to Southeast Asia





# Quick Update: Asian Subterranean Termite

## *Coptotermes gestroi*

- Large number of infested slash pines in Ft. Lauderdale area
- Trees often girdled by preferential feeding on less dense outer tree rings of pines

*Contact Dr. Thomas Chouvenc @ UF-IFAS in Davie for more info*





# Acknowledgements & Questions

