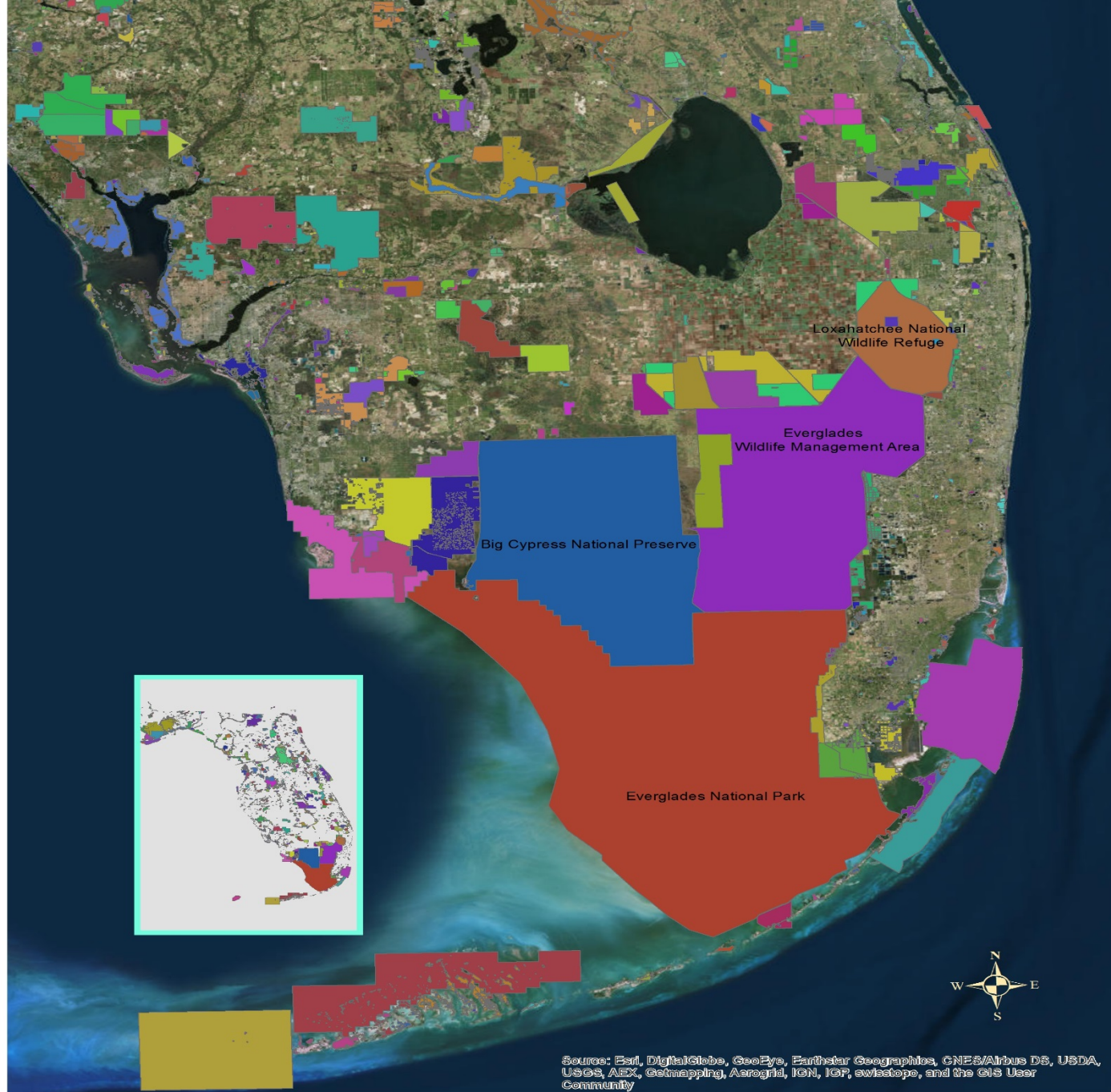


South Florida Invasives

Coordination in the south—

A tale of Coordinating Projects with Multiple Agencies, Invasive Exotic Plants, Strategies, And personalities





Only in South Florida

“Carl Hiaasen”

CHALLENGES

- Funding (always up in the air)
- Access (often a big issue)
- Density (can change after one wildfire)
- Multiple agencies (Lox & Picayune)
- Weather (always changing)



3.5 Million Acres of Conservation Land

Big Cypress National Preserve

Everglades National Park

Loxahatchee National Wildlife Refuge

Florida Wildlife Management Areas

Florida Forest Service State Forests

County/City Conservation lands

Florida State Parks



The Big Kids



Large Ongoing Projects

Lox_Ref_GBsept15 UpdatedDraft_rev.pdf - Adobe Acrobat

File Edit View Window Help

Create [Icons] Customize [Icon]

26 / 28 104% [Icons] Tools Fill & Sign Comment

SOUTH FLORIDA WATER MANAGEMENT DISTRICT

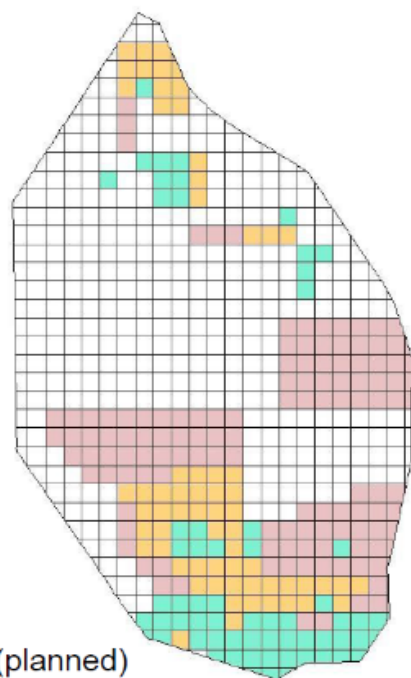
MOU with SFWMD – FWC – USFWS

MOU provides coordination for invasive plant management in a five-year work plan:

- SFWMD and FWC work from the south northward
- USFWS conducts initial and follow-up treatments in the north and central regions
- FWC funding SFWMD contractors
 - 2014: \$900,000
 - 2015: \$1,000,000
 - 2016: \$2,000,000 (proposed)

YEAR FUNDED

- 2014
- 2015
- 2016 (planned)



SFWMD.org

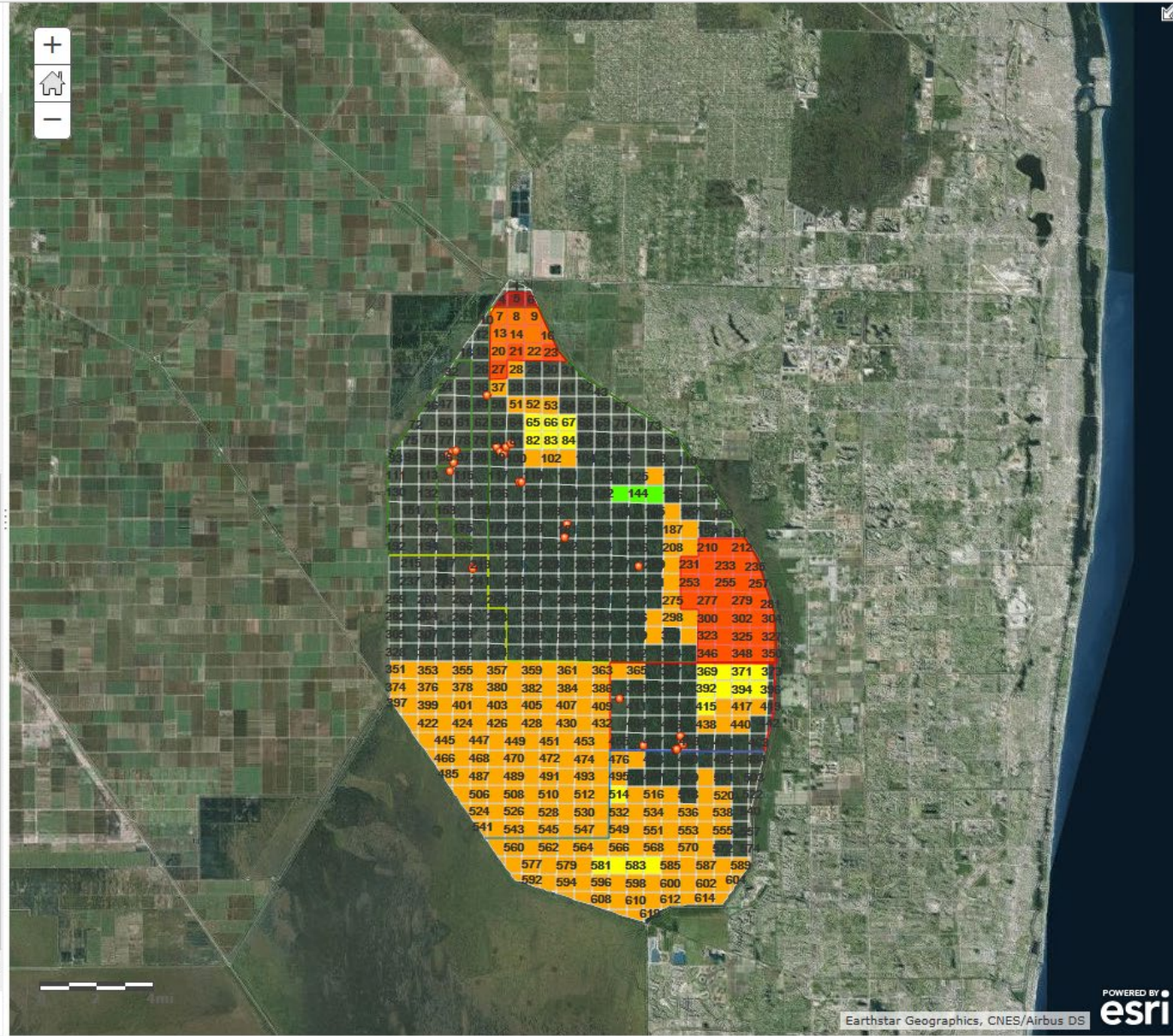


Details Add ▾ Edit Basemap Analysis Save ▾ Share Print | Directions Measure Bookmarks

Legend

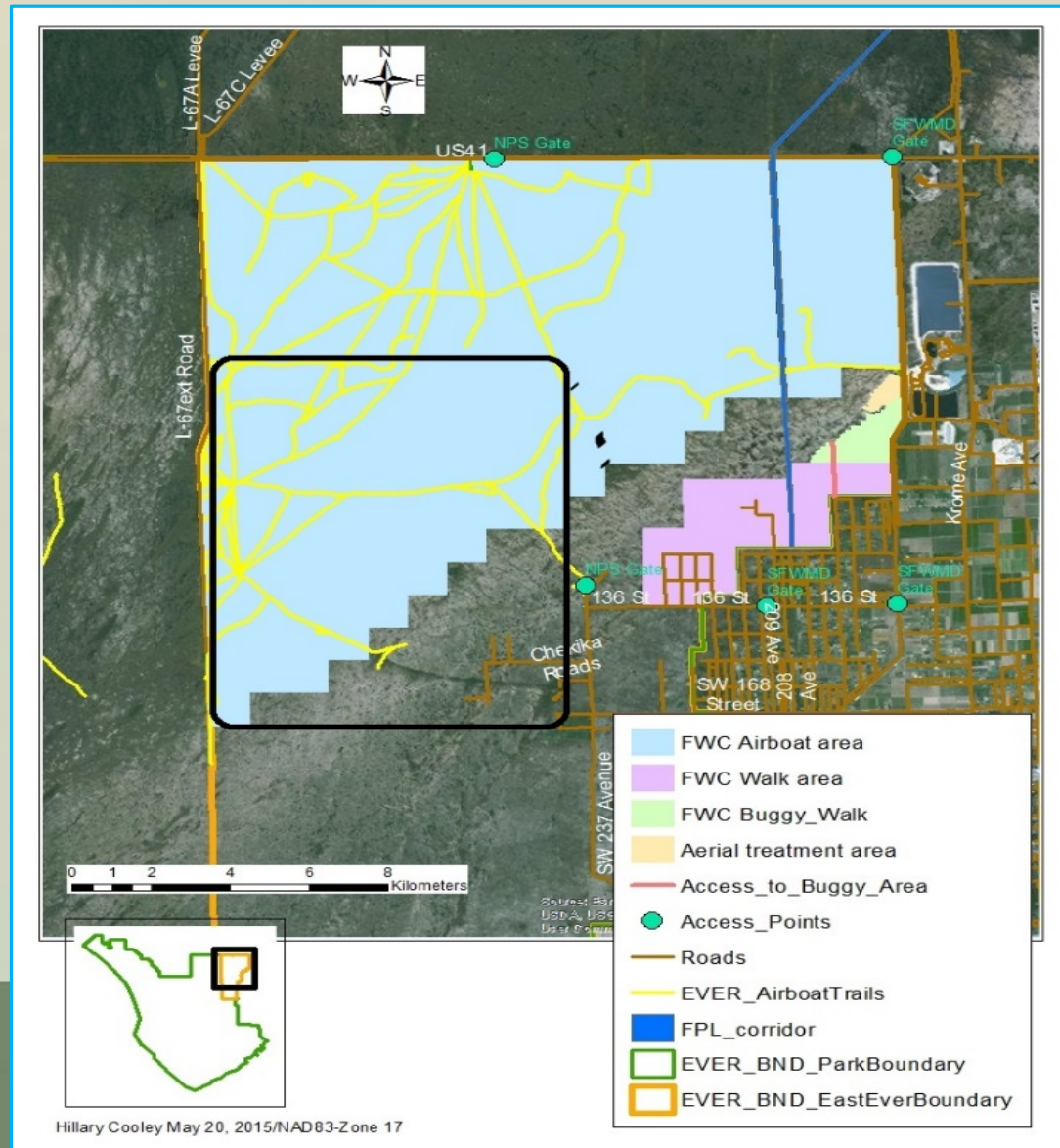
LOX_WorkModel_GridData

- Lygodium Treated 3+ Years
- Lygodium Treated Twice
- Lygodium Treated Only Once
- Lygodium Treated Since 2014
- Melaleuca Treated 3+ Years
- Melaleuca Treated Twice
- Melaleuca Treated Only Once
- Melaleuca Treated Since 2014

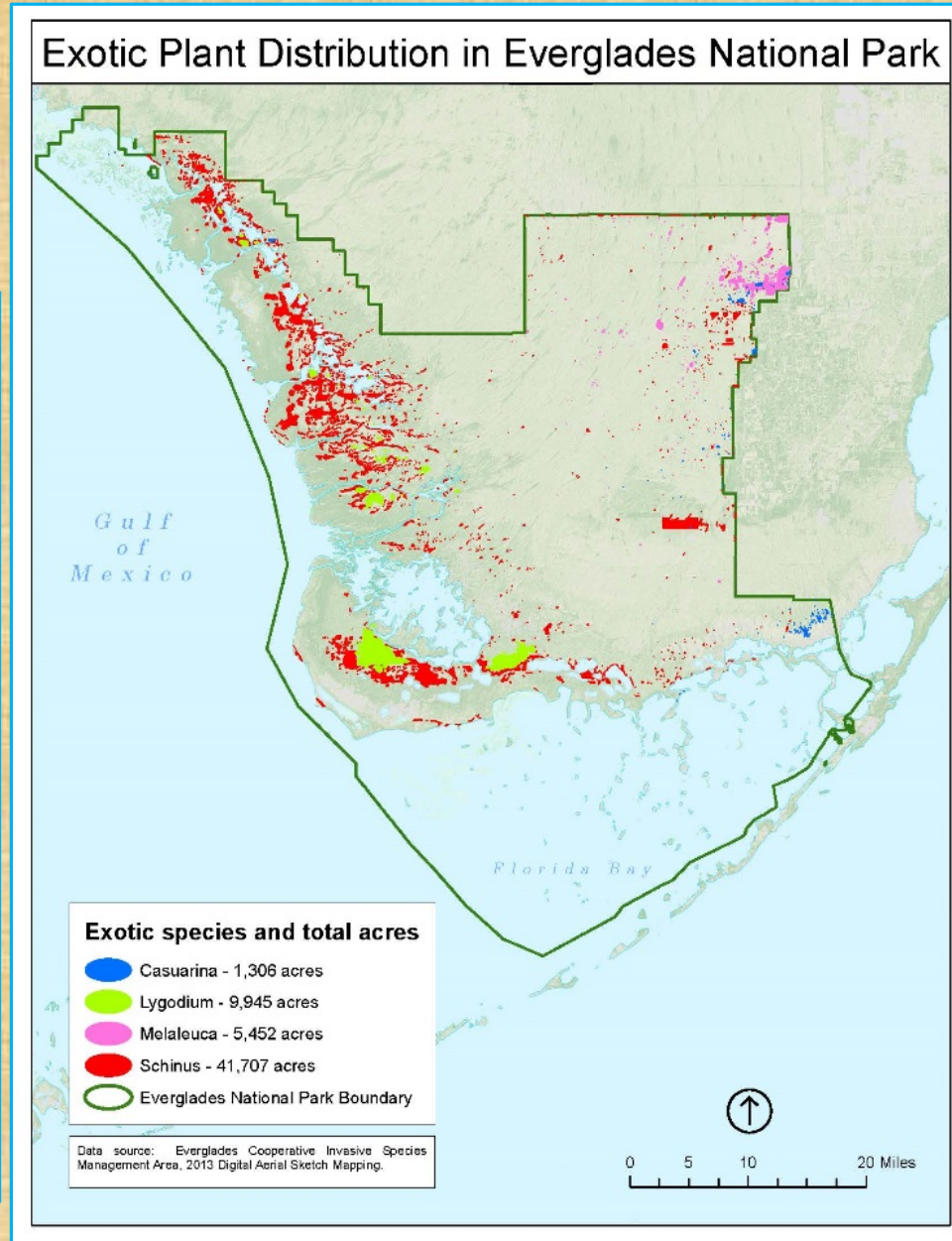
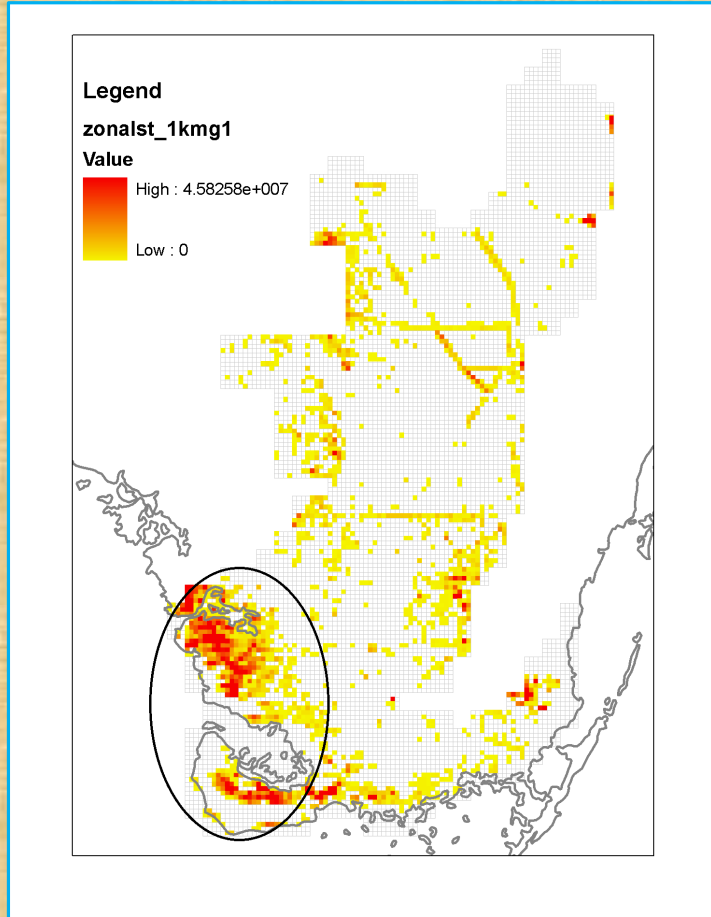


Large Ongoing Projects

- Everglades East



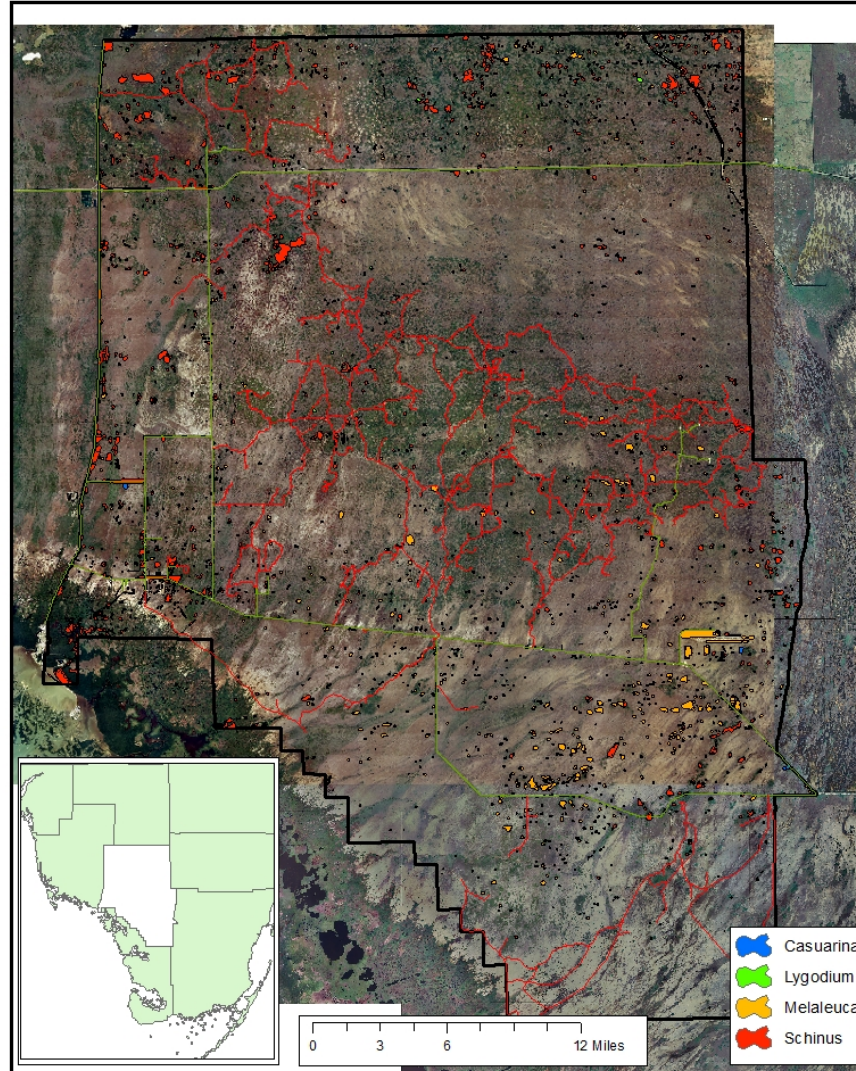
Save our Mangroves



Large Ongoing Projects

- Bid at a per-crew day

Big Cypress NP exotic plant locations



We are working with both the Seminole and Miccosukee Indian Reservations.

We received special permission to work on the Reservations' public access areas that border public conservation lands that we are already working on.



HOW MUCH \$\$\$\$ WAS SPENT IN
18/19

ENP - \$448,449

BCNP - \$339,339

FPNWR - \$248,652

LNWR - \$1,000,000

State Parks - \$72,528

County/City Parks – \$277,068

CREW - \$195,517

Picayune Strand State Forest – \$68,757

Big Cypress Indian Reservation - \$383,750

TOTAL - \$3,094,030

Melaleuca - \$1,000,000 with \$200,000 going to Picayune Strand
(some melaleuca monies spent in SW CISMA)

