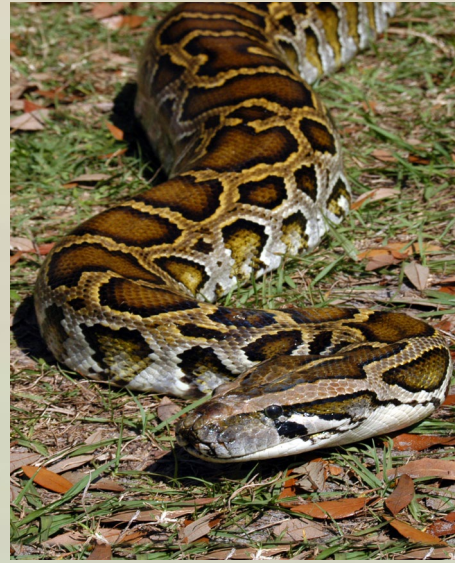


Assessment of Priority Species and Control Efforts



ECISMA Summit – 17 July 2019

Krissy Laurie, Senior Nonnative Fish and Wildlife Biologist
Wildlife Impact Management Section
Florida Fish and Wildlife Conservation Commission



Nonnative Fish and Wildlife Program

- FWC New Faces
- Exotic Species Hotline
- Early Detection Rapid Response (EDRR)
- Management and Research Projects
- Projects for 2019-2020



FWC New Faces

- Krissy Laurie
- David Jacob
- Robert Edman
- Stephanie Krug
- Ian Towne
- Austin Prechtel
- Jake Travers



Exotic Species Hotline

- **1-888-Ive-Got-1**
- 3-4 FWC staff operate the hotline during the week
- The hotline is typically operated from:
 - 8am-7pm M-W
 - 8am-5pm Th-F
 - 12pm-5pm Sat and Sun (most weekends)



**Seen something exotic?
Report your sighting!**

- 1. Take a picture**
- 2. Note the location**
- 3. Report your sighting**

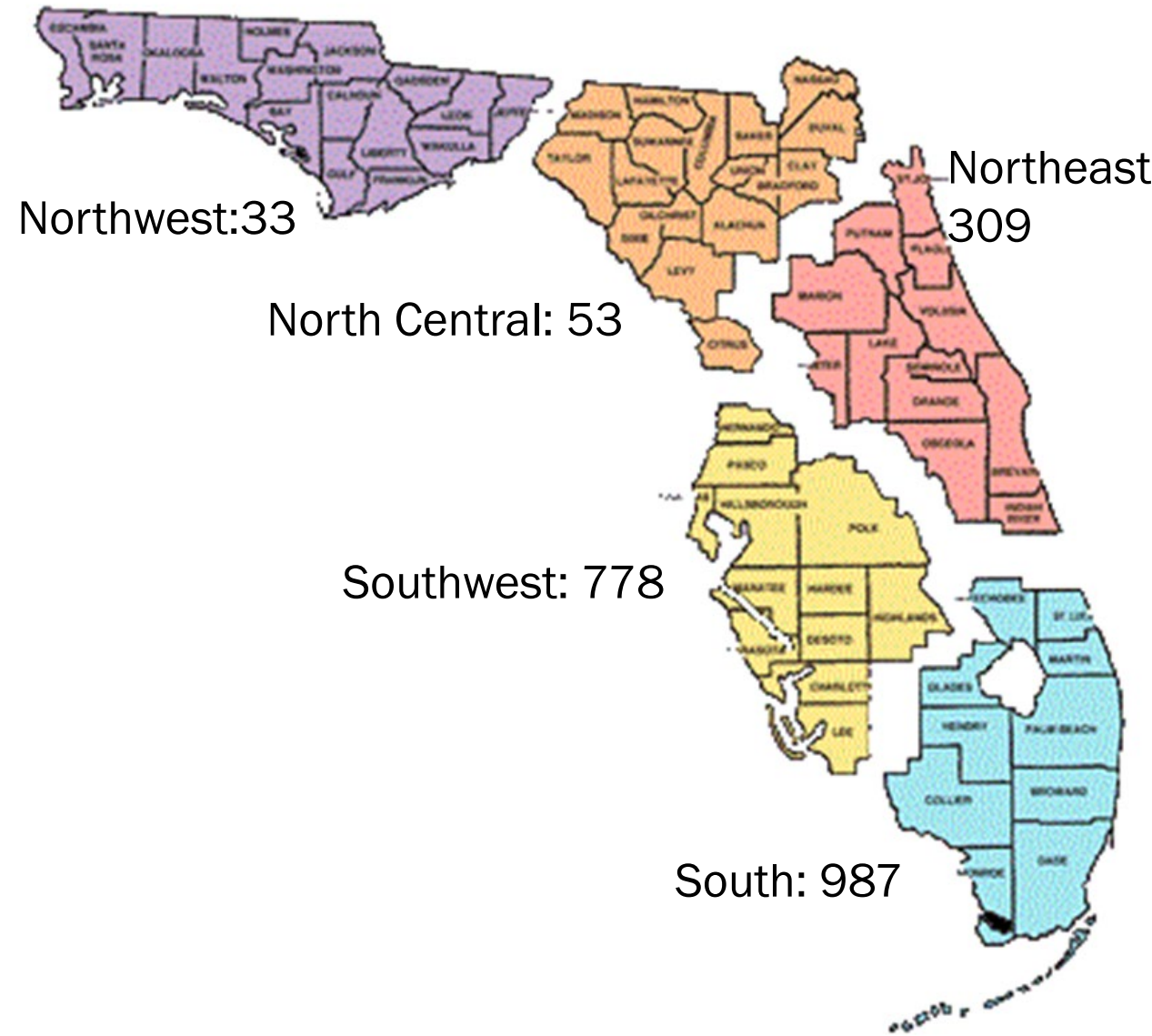
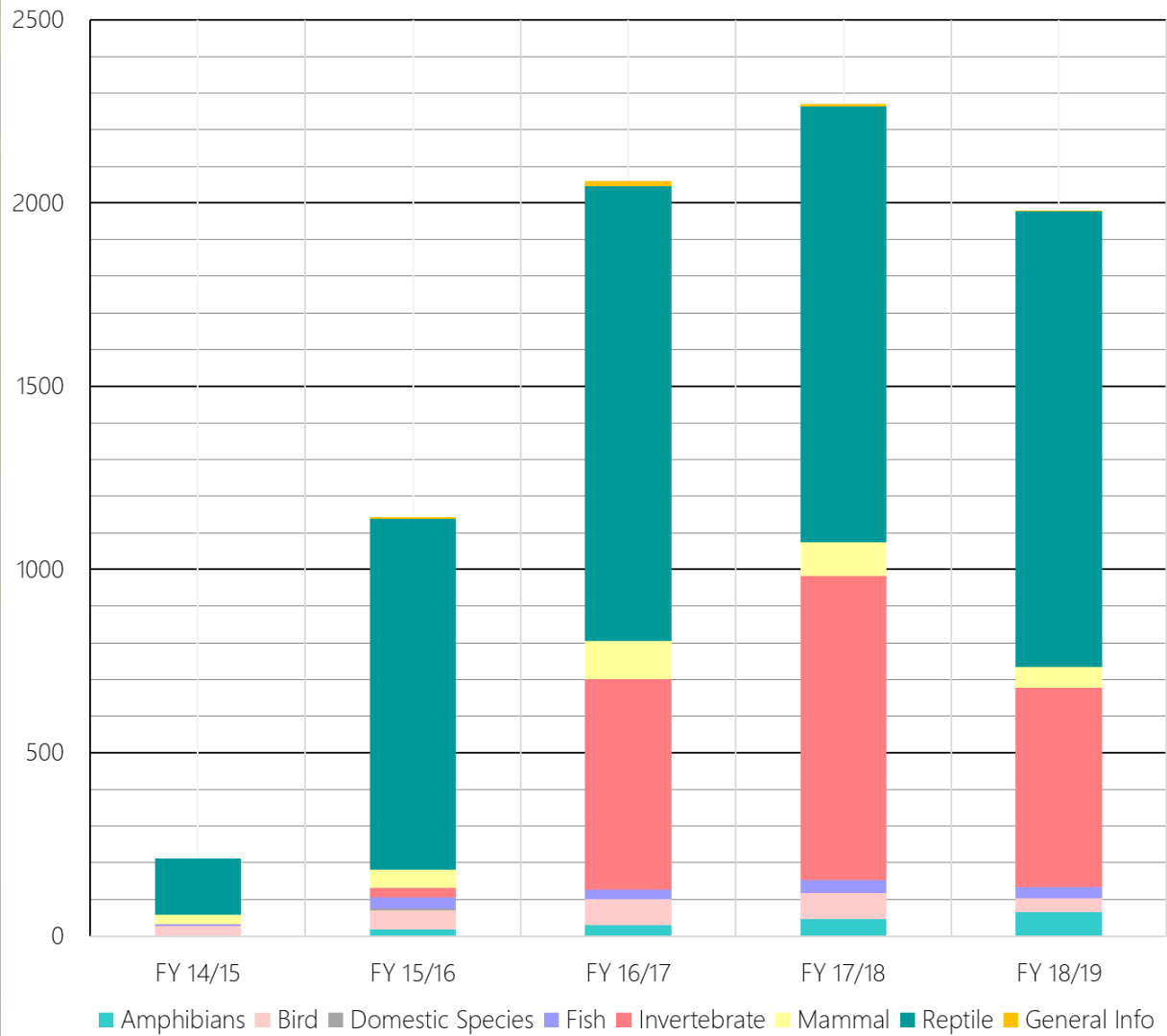
By phone: 888-Ive-Got1 (888-483-4681) Online: IveGot1.org
or download the IveGot1 reporting app.

Knowing the distribution of nonnative species in Florida helps wildlife biologists plan more effective management strategies.

MyFWC.com/Nonnatives

The poster features images of a snake, a lizard, and a capybara. It includes a list of three steps for reporting a sighting and contact information for the hotline and website.

Hotline Calls by Topic



EDRR Updates



Argentine Black and White Tegu

Natural History:

- Large, omnivorous lizard from S. America

Impacts:

- Diet is a concern for imperiled species

Control Efforts:

- Trapping in Miami-Dade
- Trap loan/EDRR response
- Outreach

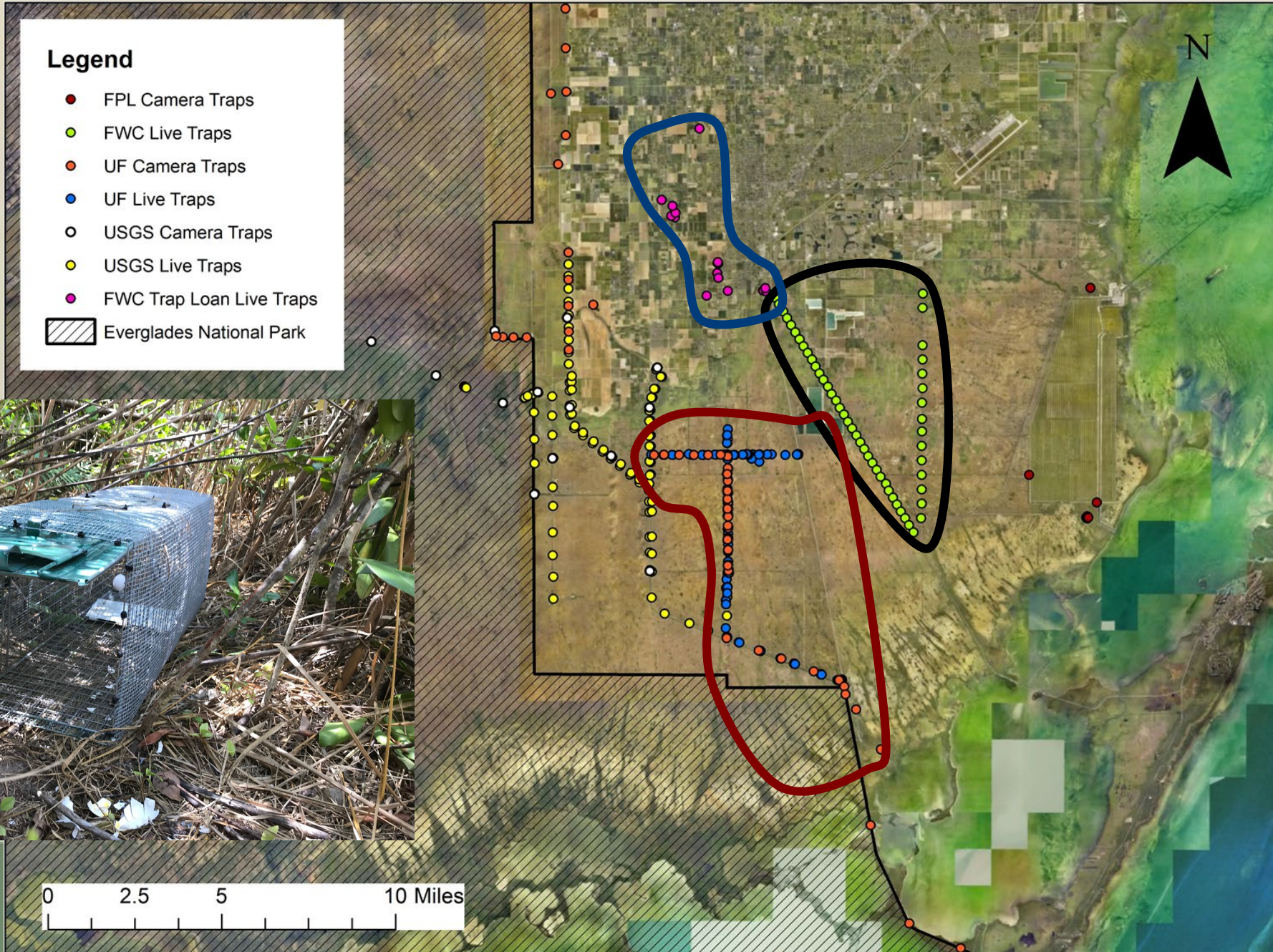


Legend

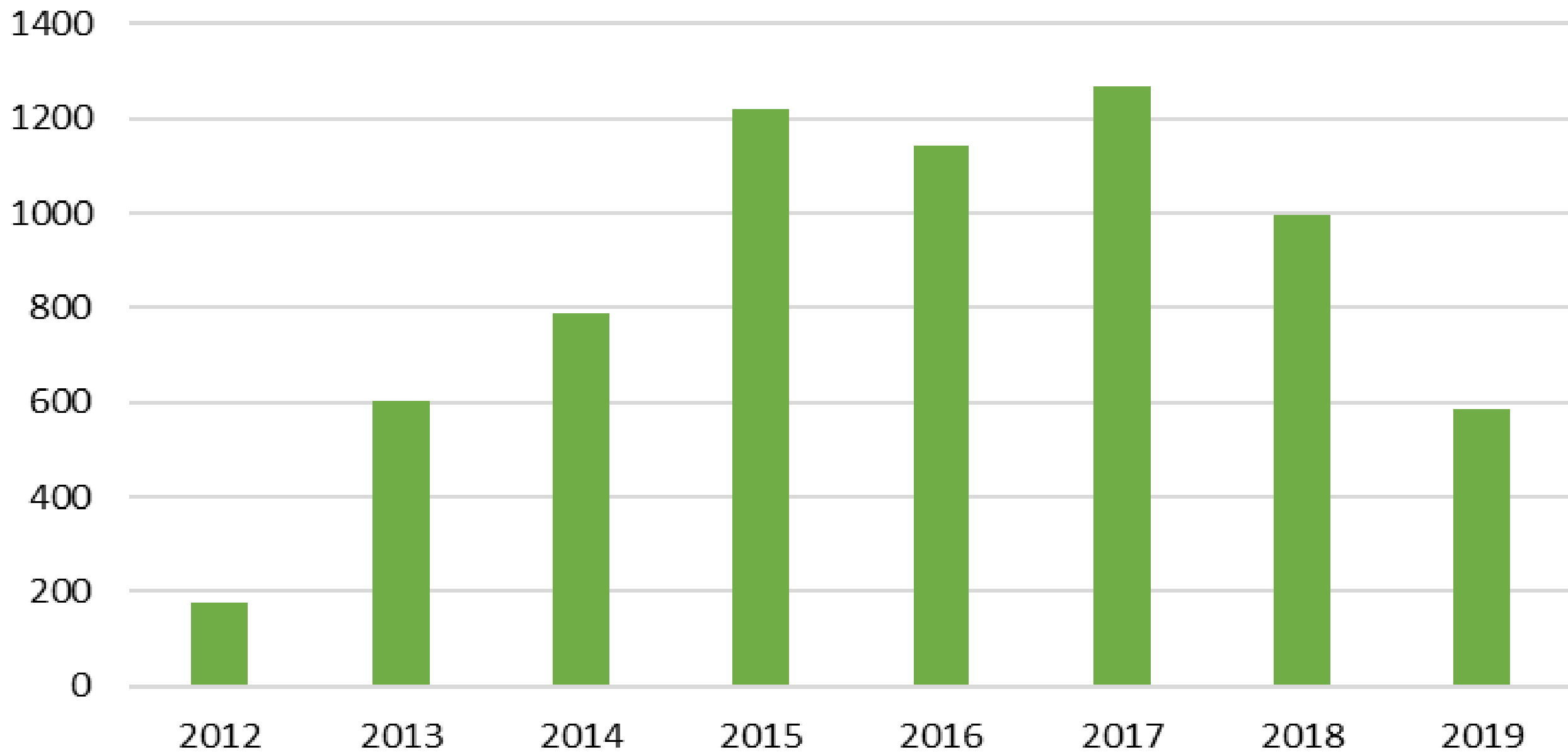
- FPL Camera Traps
- FWC Live Traps
- UF Camera Traps
- UF Live Traps
- USGS Camera Traps
- USGS Live Traps
- FWC Trap Loan Live Traps
- ▨ Everglades National Park



0 2.5 5 10 Miles



Tegus Removed by ECISMA Partners



Nile Monitors

Natural History:

- Large, carnivorous lizard from sub-Saharan Africa

Impacts:

- Diet is a concern for imperiled species

Control Efforts:

- Trapping/visual canal surveys
- Camera trapping
- EDRR response
- Outreach



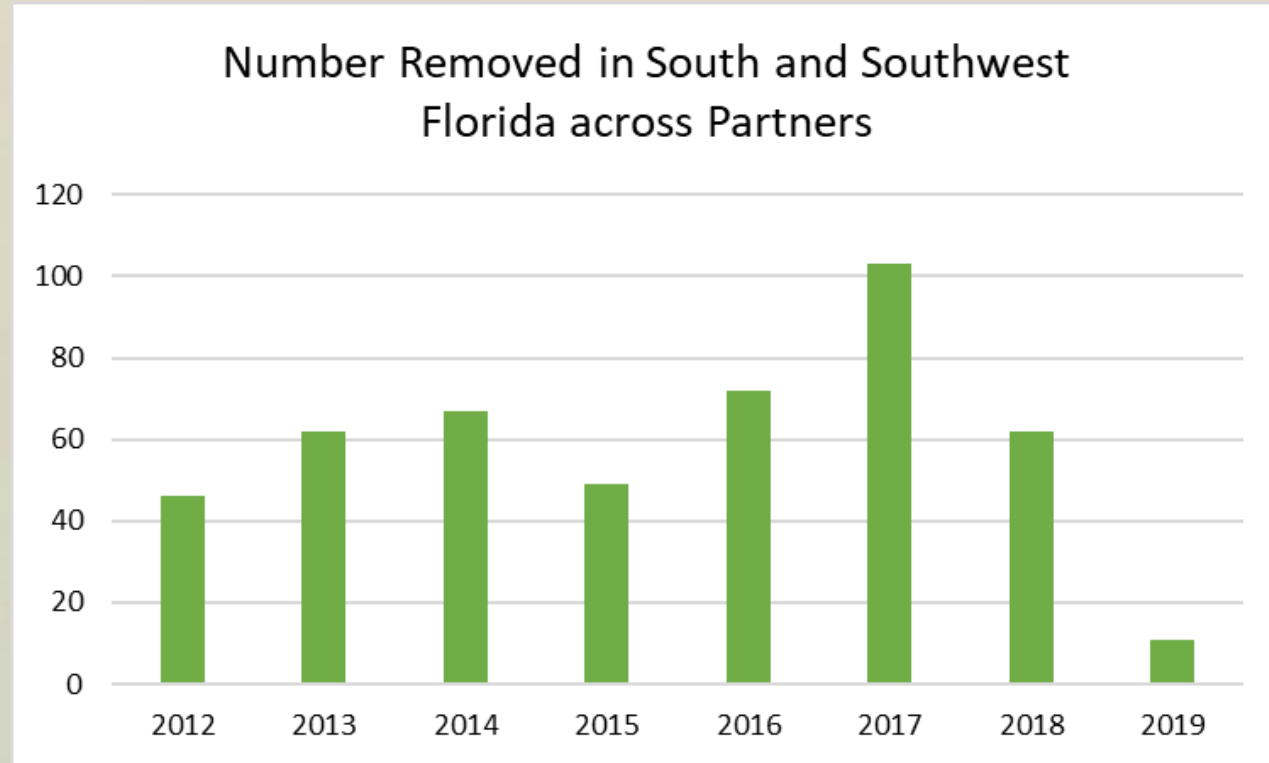
Nile Monitors



Nile Monitors

797 Nile monitors removed statewide since 2002

11 Nile monitors have been removed in 2018/2019



Nile Monitors

- Continue camera trapping
- Conduct more targeted surveys
- Attempt more live trapping in Palm Beach County



Burmese and North African Pythons

Natural History:

- Large-bodied constrictors from Asia and sub-Saharan Africa

Impacts:

- Predation of native species

Control Efforts:

- Python contractors
- Camera trapping/EDRR response
- Outreach



Interagency North African Python Survey

- Priority locations were searched within the Bird Drive Basin/West Miami-Dade County areas
- Python bones were discovered near the most recent removal site from December 2018



USACE Invasive Reptile Control

Invasive reptile control on Corps land in South Florida near Lake Okeechobee

- Initiated under the Economy Act Agreement with USDA Wildlife Services in May 2018

Totals-Since last ECISMA summit	1728
Green Iguana	119
Northern Curlytail Lizard	2
Brown Basilisk	2
Redhead Agama	1605

Grand Total (since May 2018)	2202
Green Iguana	345
Northern Curlytail Lizard	5
Brown Basilisk	6
Redhead Agama	1846



USACE Invasive Reptile Control

Captures from July 2018 through July 2019:

Port Mayaka Lock:

1 Northern Curlytail Lizard
66 Redhead Agamas

St. Lucie Lock:

233 Redhead Agamas

C-44 (A):

279 Redhead Agamas
1 Brown Basilisk

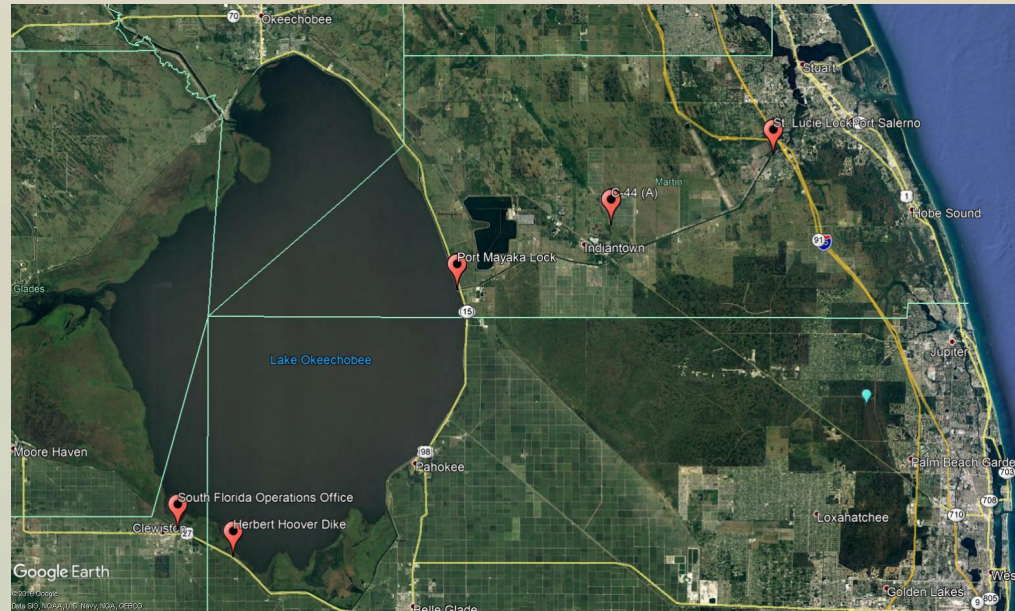
Herbert Hoover Dike:

1,027 Redhead Agamas
1 Northern Curlytail Lizard

South Florida Operations

Office, Clewiston:

1 Brown Basilisk
119 Green Iguanas



Projects for 2019/2020

- Interagency Python Management Plan
- South Florida Detector Dog Team
- Python Trapping Using a Patented Large Reptile Trap
- Using Lures to Detect and Remove Pythons
- Tegu Removal in Southern Glades
- Cane Toad Trapping and Tracking
- Risk Screening for Nonnative Fish



Thank you!

