

MAKING A DIFFERENCE AT THE LOCAL LEVEL

AIS PREVENTION AID IMPLEMENTATION IN
WASHINGTON COUNTY, MINNESOTA

*Colin Kelly, AICP
Senior Planner*

October 18, 2016

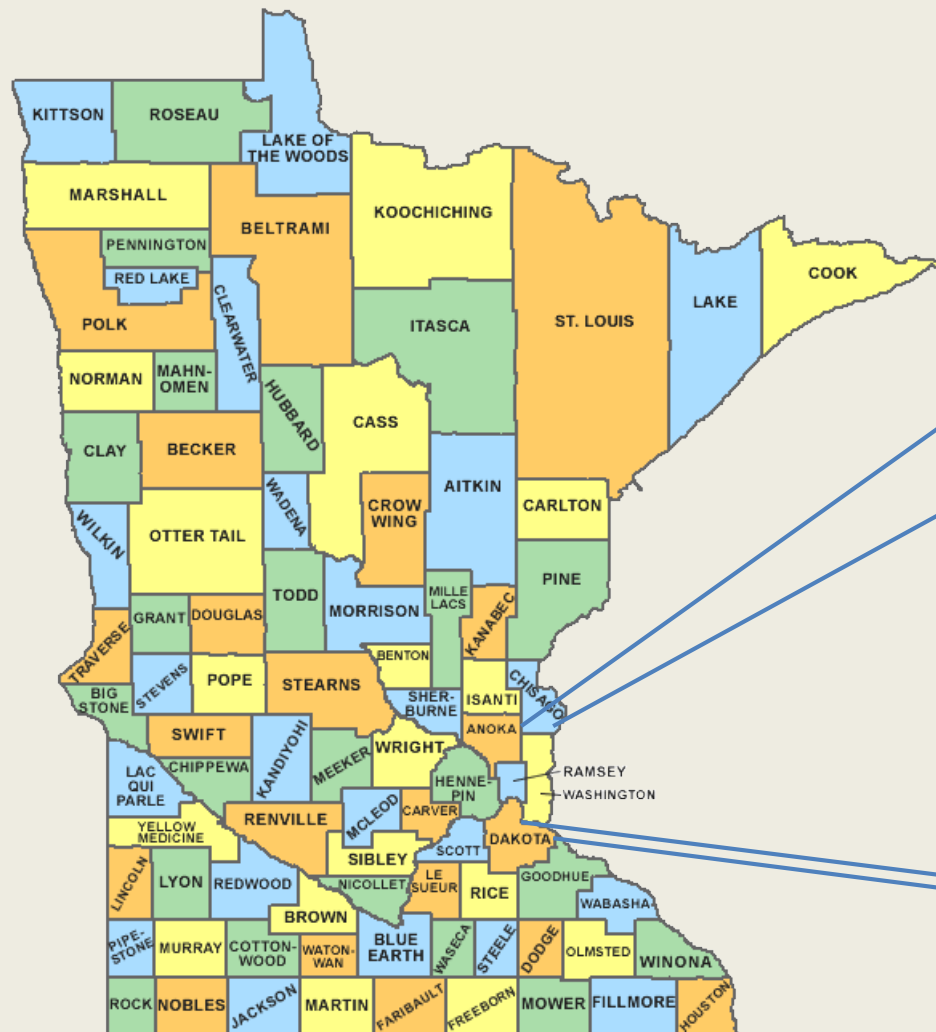


Stop Here	
Clean	off all plants and animals
Drain	water and remove drain plug
Dispose	of unwanted bait
Thank you for protecting Minnesota waters!	

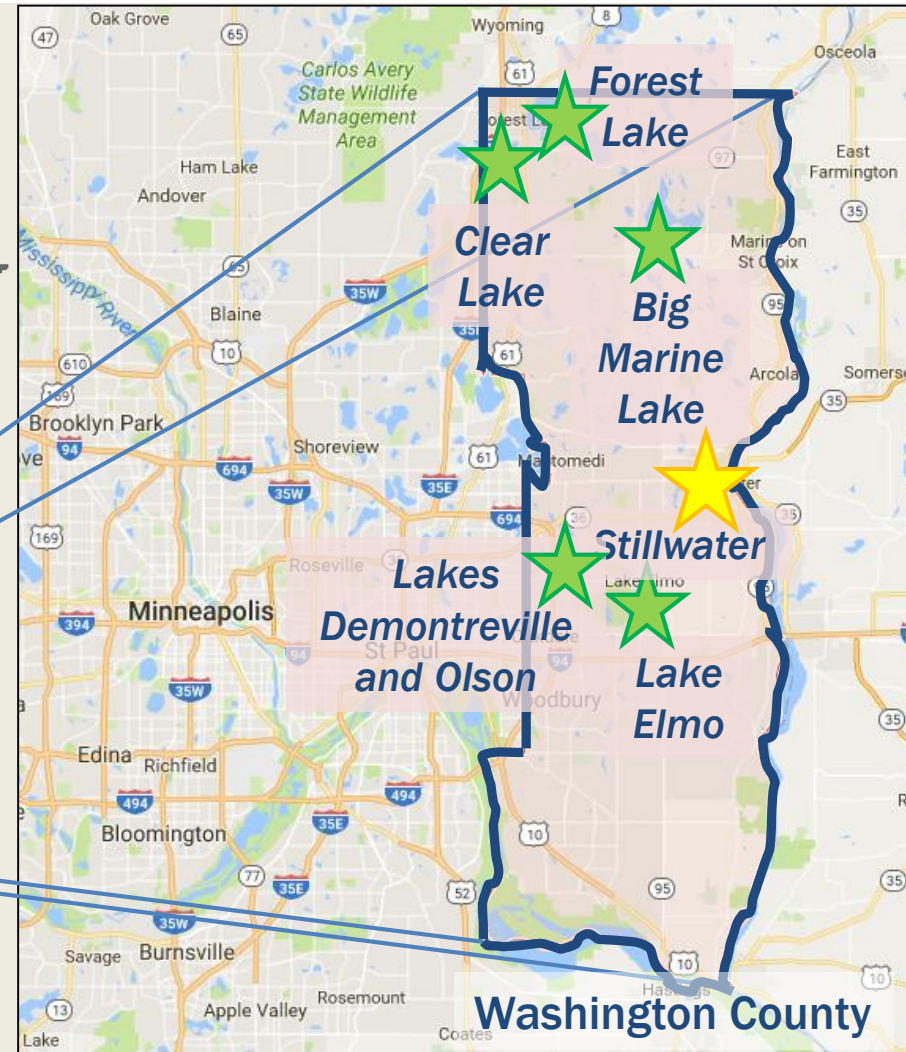


**Washington
County**

COUNTY, PROJECT GEOGRAPHY



Copyright 2005 digital-topo-maps.com



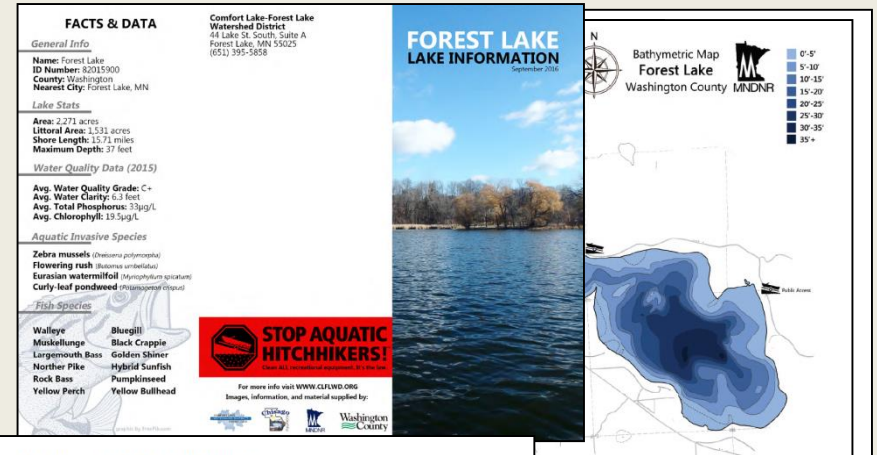
AIS PREVENTION AID BACKGROUND

- ★ 2014: \$10M in funds distributed to 84 counties statewide
- ★ Counties decide how funds are distributed
- ★ Washington County opted to create a grant program

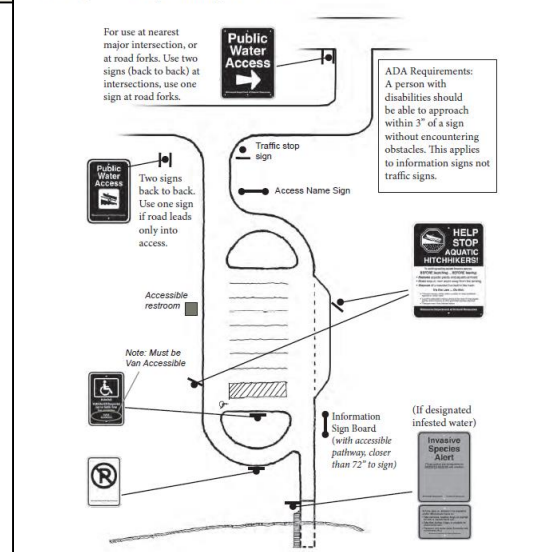


MAJOR AIS PREVENTION ACTIVITIES

- ★ Planning
- ★ Education and Outreach
- ★ Public Water Access Improvements
- ★ Watercraft Inspections
- ★ Control of Existing Invasives



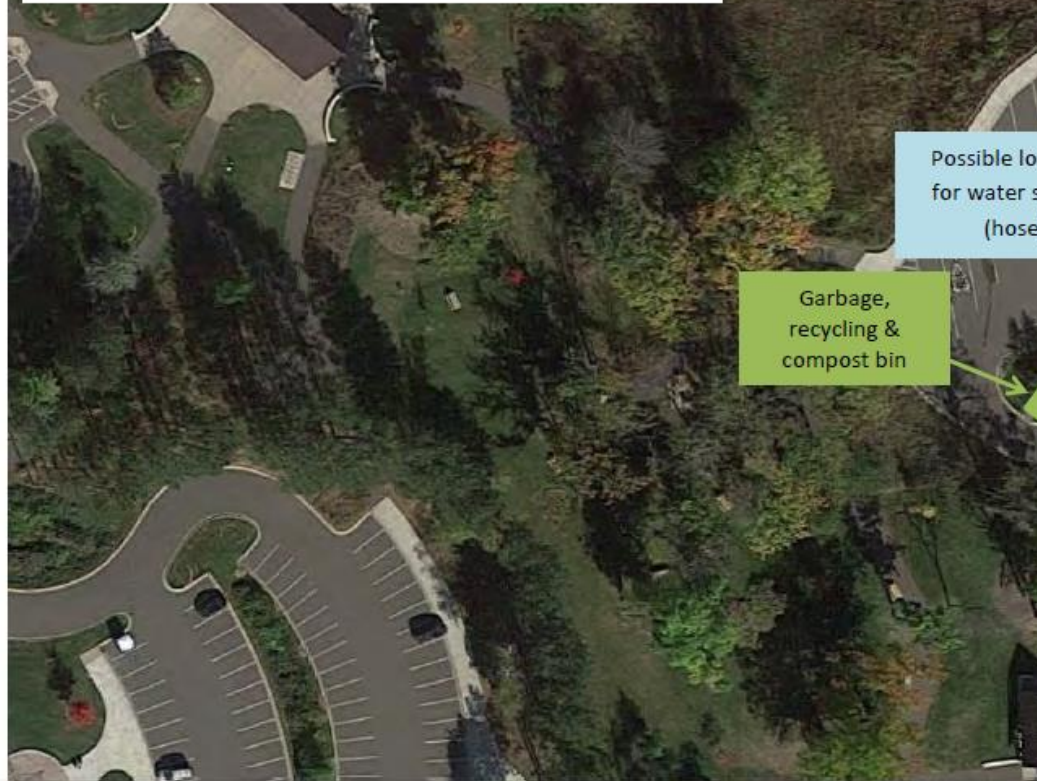
AIS Signs- Example of Typical Site



STAKEHOLDERS

★ BMLA	Big Marine Lake Association
★ CLA	Clear Lake Association
★ CLFLWD	Comfort Lake – Forest Lake Watershed District
★ MNDNR	Minnesota Department of Natural Resources
★ LDOA	Lake Demontreville and Olson Association
★ LELA	Lake Elmo Lake Association
★ NPS	National Park Service
★ SCRA	St. Croix River Association
★ WCD	Washington Conservation District
★ WCP	Washington County Parks

Big Marine Park Reserve



Above: New, free-standing, large entrance and exit signs have been added to prompt water users to enter and after exiting the water. Additionally, pavement could be marked to designate a space for water users and a hose could be added in this area to provide a water source for cleaning.

Right: Existing compost bin and recycling containers should be relocated to increase use.



Figure 1: Access 1 AIS Inspection Station Improvements

EDUCATION AND OUTREACH

★ Postcards and email

★ CLFLWD; 2015, 2016

★ Geo-fencing

★ WCD, 2015



PUBLIC WATER ACCESS IMPROVEMENTS

★ Signage

★ WCD, 2015

★ WCP, 2016

★ Information kiosks, compost bins, pavement stencils

★ CLFLWD, 2016

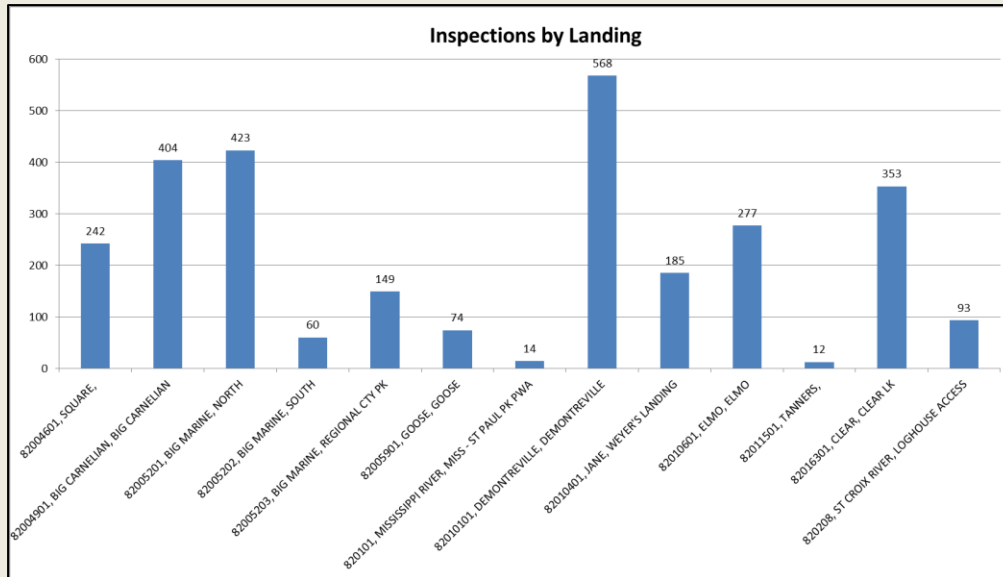
★ WCD, WCP; 2016
(stencils)



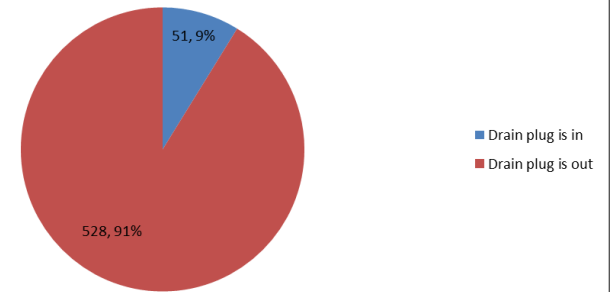
WATERCRAFT INSPECTIONS

★ Shared seasonal watercraft inspection program

★ *CLFLWD, WCD; 2015, 2016*

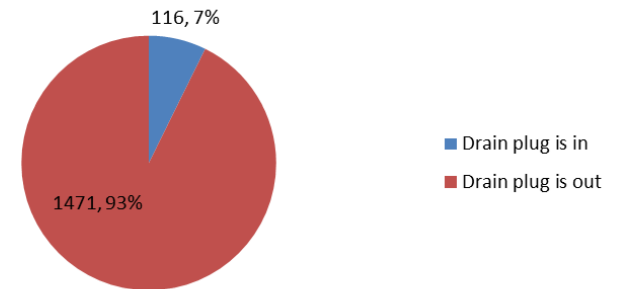


Drain Plug Violations 2015 (Incoming Inspections)



Total

Drain Plug Violations 2016 (Incoming Inspections)



CONTROL OF EXISTING INFESTATIONS

★ Eurasian Watermilfoil

★ *BMLA; 2015, 2016*

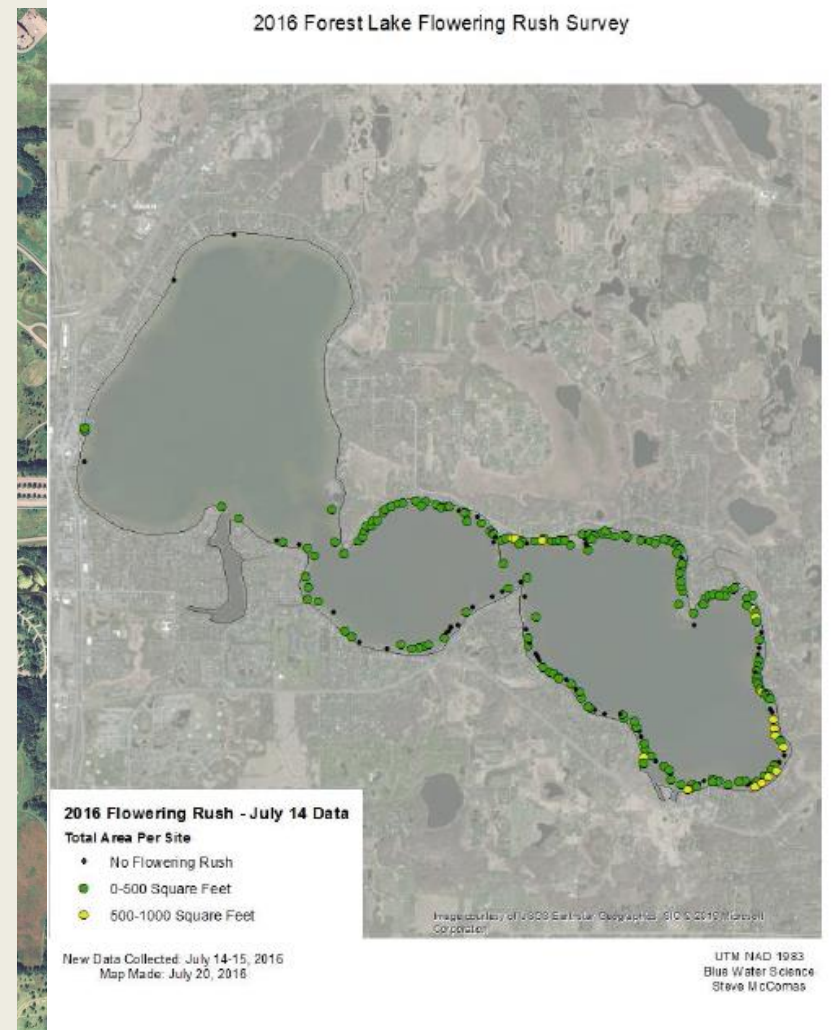
★ *CLA, 2016*

★ *LDOA, 2016*

★ *LELA, 2016*

★ Flowering Rush

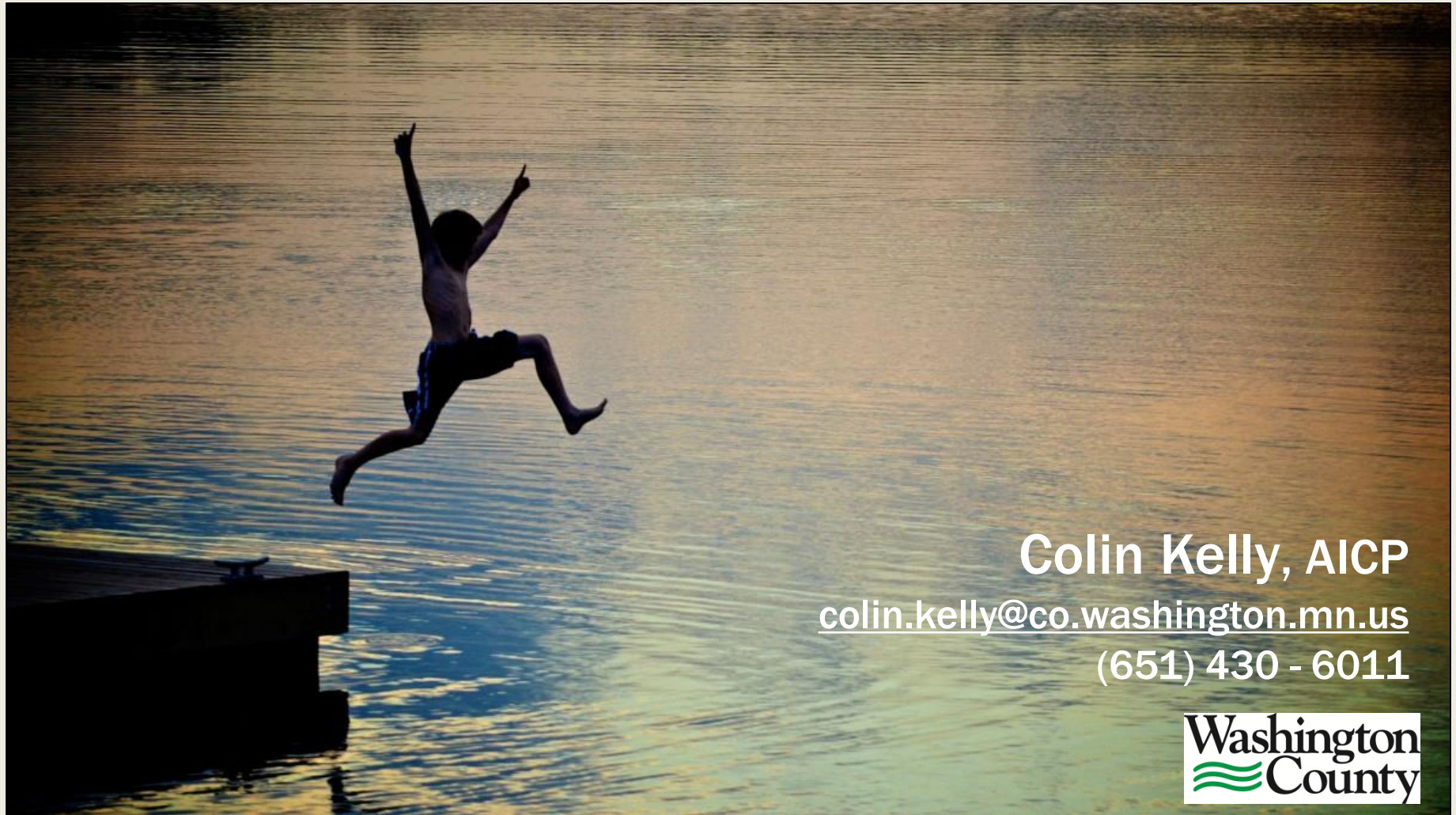
★ *CLFLWD; 2015, 2016*



CONCLUSION

- ★ **We are making a difference at the local level**
- ★ **County Board appreciates the current approach**
 - ★ Collaborative effort - Lake associations, watershed districts, WCD, SCRA, MNDNR, NPS, contractors, etc.
 - ★ Request for proposals process
 - ★ Results tracking
- ★ **Keys to success**
 - ★ Continue getting the word out - Education and outreach
 - ★ Continue to innovate - Treatment techniques
 - ★ Continued to collaborate - All levels

THANK YOU!



Colin Kelly, AICP
colin.kelly@co.washington.mn.us
(651) 430 - 6011

