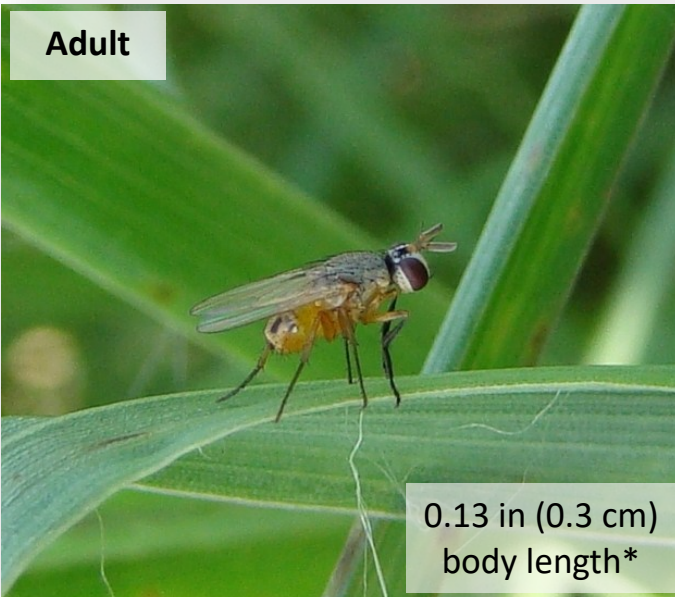


bermudagrass stem maggot *Atherigona reversura*

Overview

Bermudagrass stem maggot is native to south Asia and was first detected in the continental US in California in 2009 and Georgia in 2010. This invasive fly is abundant where bermudagrass is grown for forage in the southeastern US. It has multiple generations per year.

Scott Carlson, University of Georgia, Bugwood.org



Life Stages

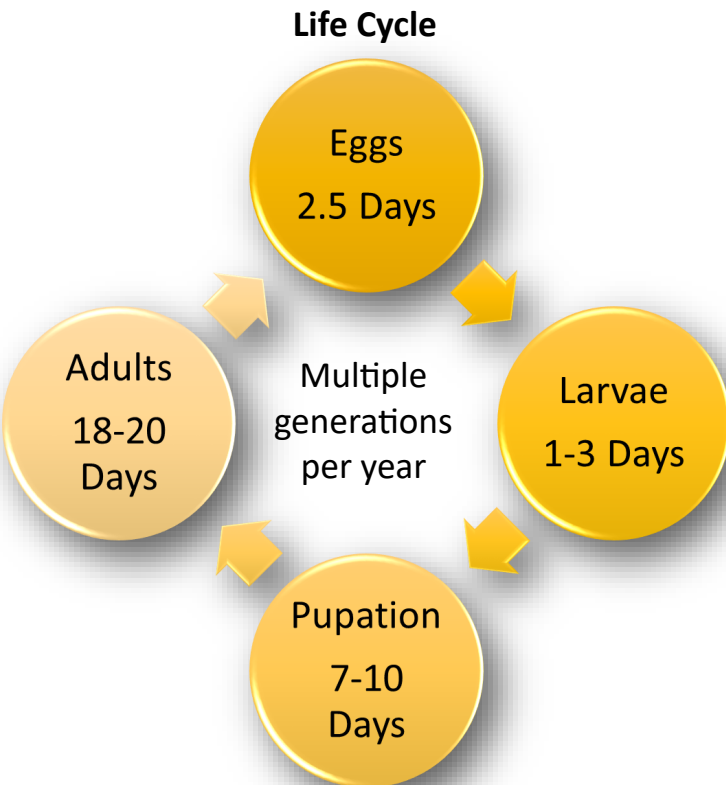
Eggs are likely laid near a leaf node, rounded, and white. They hatch in 2.5 days.

Larvae feed in the stem above the top node after hatching, and are a 0.13 in (0.3 cm) long, yellowish maggot with mouthhooks. They pupate after 1-3 days.

Pupation occurs in the soil and lasts 7-10 days.

Adults have an angular head, transparent wings, are gray and yellow, and 0.13 in (0.3 cm) long. Males are smaller than females and have a rounded abdomen. The female's abdomen is larger and pointed. Adults live 18-20 days.

Larva



More Info

US hosts include bermudagrass (*Cynodon dactylon*) and stargrass (*Cynodon nlemfuensis*).

Symptoms include yellowing (chlorosis) of top 2-3 leaves on each stem.