

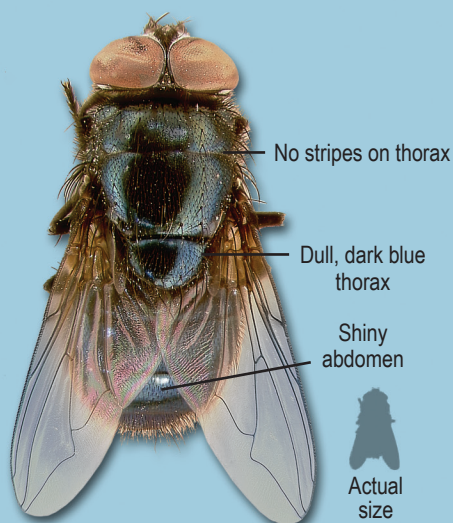
Filth-Breeding Flies

R.W. Baldwin, S.E. Thompson, T.Y. Lee, and P.G. Koehler¹

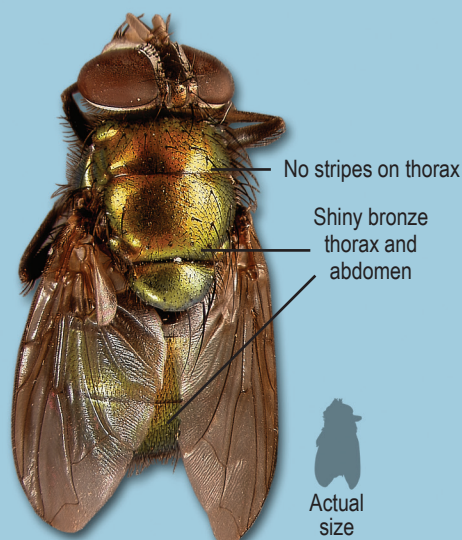
Dead Animals and Meat Scraps



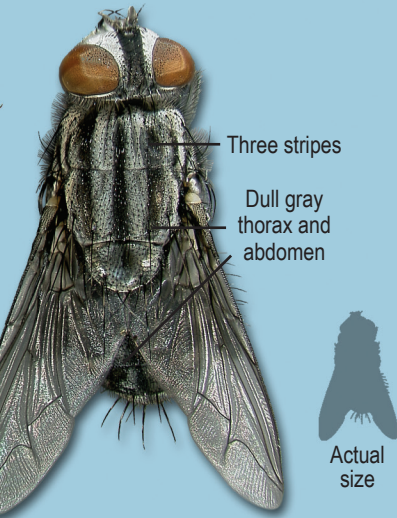
Green Bottle Fly
Lucilia sericata



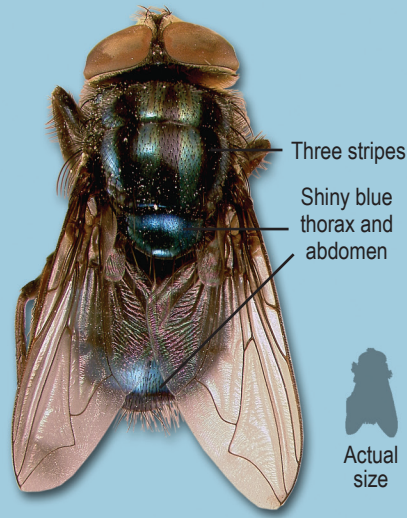
Blue Bottle Fly
Calliphora vicina



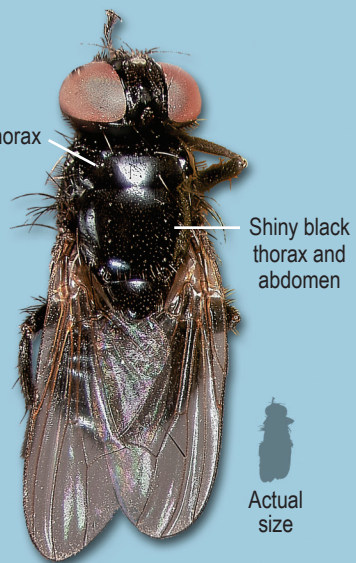
Bronze Bottle Fly
Lucilia cuprina



Flesh Fly
Sarcophaga spp.

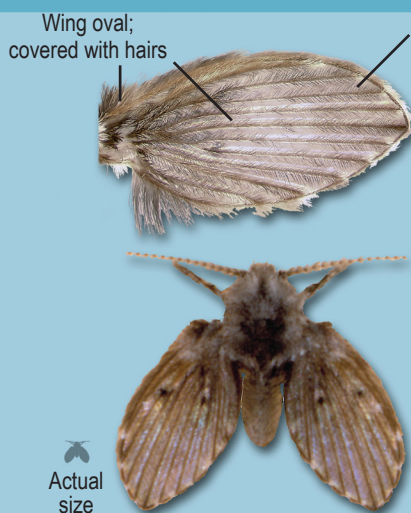


Secondary Screwworm Fly
Cochliomyia macellaria

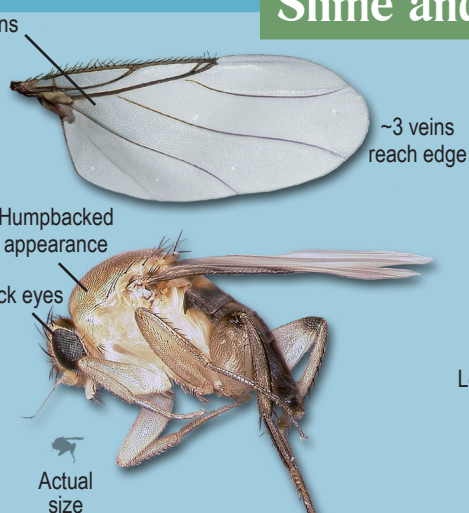


Black Blow Fly
Phormia regina

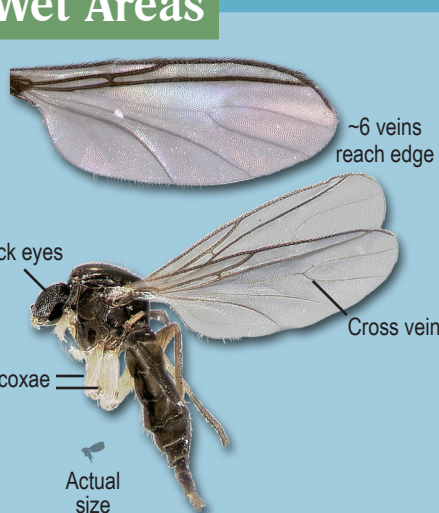
Slime and Wet Areas



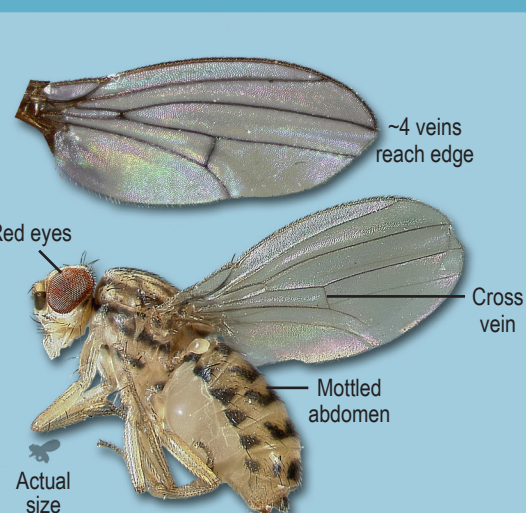
Drain Fly
Clogmia albipunctata



Phorid Fly
Megaselia scalaris

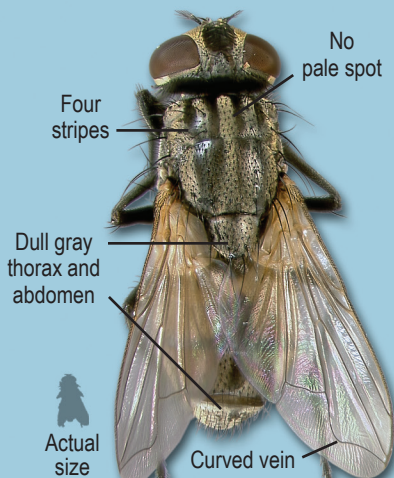


Fungus Gnat
Bradysia coprophila

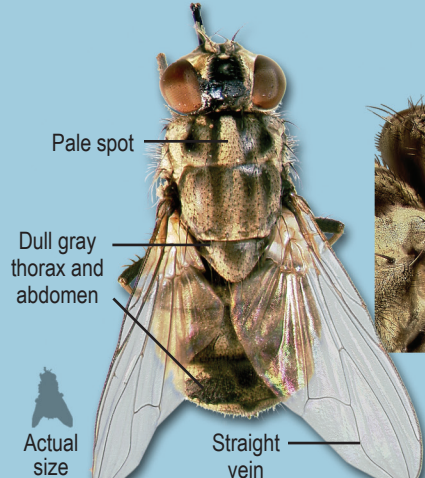


Fruit Fly
Drosophila spp.

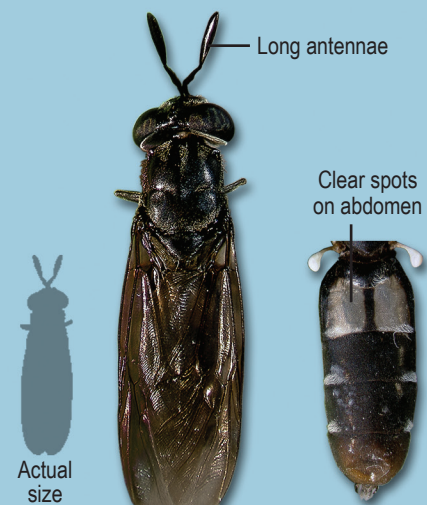
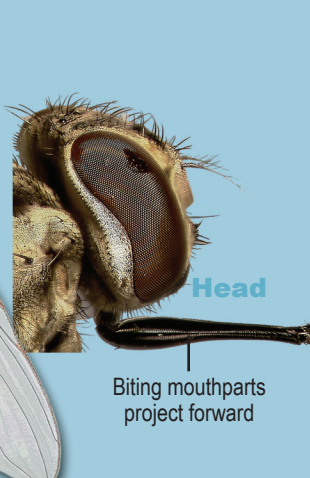
Sewage, Manure, Compost, and Garbage



House Fly
Musca domestica



Stable Fly
Stomoxys calcitrans



Black Soldier Fly
Hermetia illucens