

# Important Vectors of Zika, Dengue, and Chikungunya Viruses

R.W. Baldwin, S.E. Thompson, T.Y. Lee, and P.G. Koehler<sup>1</sup>



## Extrinsic Incubation

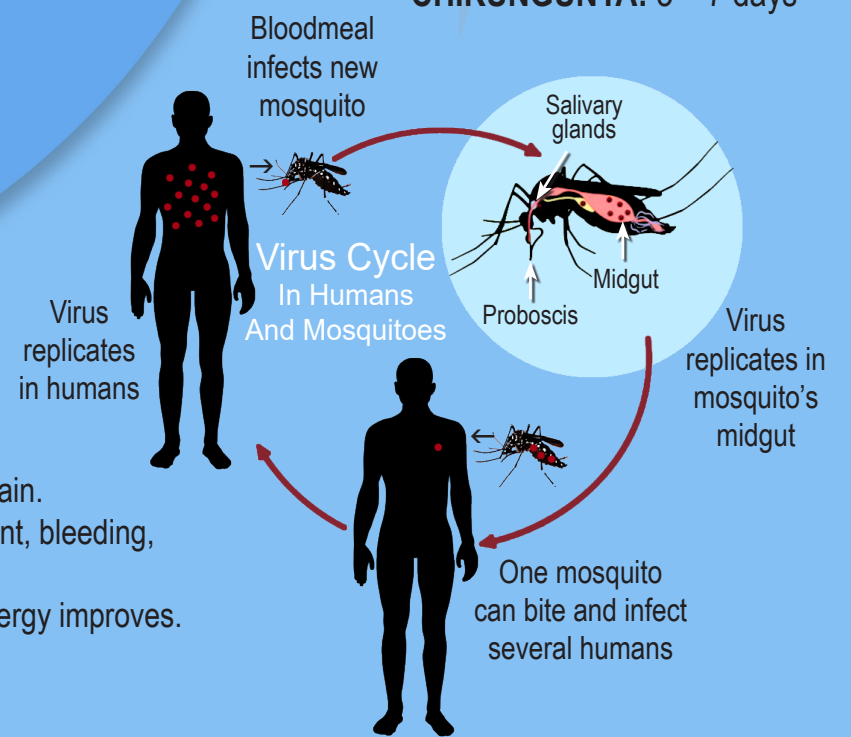
Extrinsic incubation is the time from a mosquito biting an infected human until the mosquito can transmit the virus to humans

- ZIKA:** 4 – 10 days
- DENGUE:** 8 – 12 days
- CHIKUNGUNYA:** 3 – 10 days

## Intrinsic Incubation

Intrinsic incubation is the time it takes for disease to develop in a human bitten by an infected mosquito

- ZIKA:** 3 – 14 days
- DENGUE:** 4 – 7 days
- CHIKUNGUNYA:** 3 – 7 days



## Duration of Disease

**ZIKA:** Many people have no symptoms. Mild symptoms last several days to a week.

**DENGUE:** FEBRILE PHASE (Days 1-3): High fever up to 104°F, headache, joint and muscle pain.

CRITICAL PHASE (Days 4-6): Fever subsides but risk increases — low platelet count, bleeding, fluid accumulation.

RECOVERY PHASE (Days 7-10+): Platelet count starts to rise, appetite returns, energy improves.

**CHIKUNGUNYA:** Severe joint pain, high fever, and headache, which can last one to two weeks.

## Symptoms

