

## Brown Stink Bug

*Euschistus servus*

No bands on the antennae

20

No metallic coloration in depressions

No bands on the legs

21



Female

22



Male

Ventral Surface green to yellow

23



Eggs

24



1<sup>st</sup> instars

25



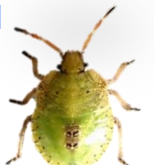
2<sup>nd</sup> instar

26



3<sup>rd</sup> instar

27



4<sup>th</sup> instar



5<sup>th</sup> instar

## Other Closely Resembling Species:

29



*Brochymena quadripustulata*

30



*Euschistus tristigmus*

## Brown Marmorated Stink Bug

*Halyomorpha halys*

The brown marmorated stink bug is a native of China, Taiwan, Korea and Japan. This invasive insect pest has spread to the United States, Canada, and Europe.

It is a serious economic pest of orchard crops, including apple and peach, row crops such as corn and soybeans, and vegetable crops including sweet corn, pepper, eggplant, and tomato.

## Photo Credits

**Gary Bernon**, USDA, APHIS, Bugwood.org (14)

**Susan Ellis**, Bugwood.org (12,15,17-19)

**Kristie Graham**, USDA, ARS (1-11, 29)

**Davis R. Lance**, USDA, APHIS, PPQ, Bugwood.org (13)

**Herb Pilcher**, USDA, ARS (20-28,30)

**Martin E. Rice**, Pioneer Hi-Bred (16)

## Information

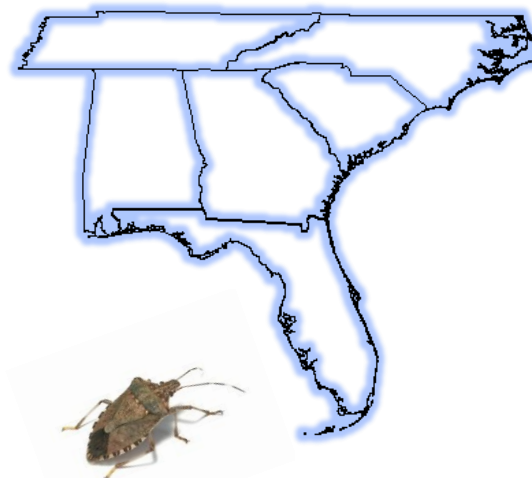
<http://www.sipmc.org/BMSB>

To report a BMSB sighting:

<http://www.EDDMapS.org/BMSB/Report>

This material is based upon work that is supported by the National Institute of Food and Agriculture, U.S. Department of Agriculture, under award No. 2014-70006-22485, subaward No. 2015-0085-21 sponsored by the Southern IPM Center.

## Southern Region Brown Marmorated Stink Bug Working Group



THE UNIVERSITY OF GEORGIA  
**COOPERATIVE  
EXTENSION**



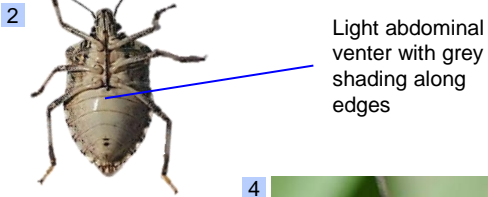
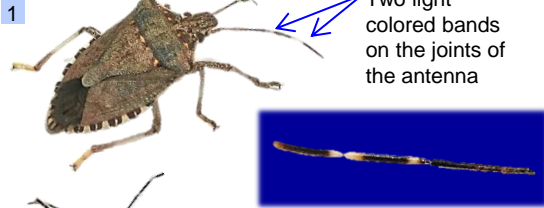
United States Department of Agriculture

**Agricultural Research Service**

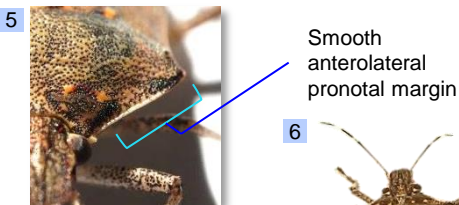
## Brown Marmorated Stink Bug

*Halyomorpha halys*

The BMSB adult is similar in appearance to several native species. A few identifying differences between the BMSB and the brown stink bug (native) are shown below.

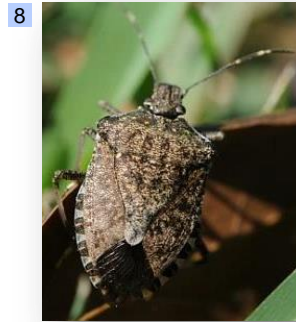


Blue-green metallic coloration in the depressions on head, pronotum, and connexivum mostly visible in sunlight



## Adults

Adults are approximately 2/3" long. In most cases the female is larger than the male.



Female



Male

## Eggs



Fresh



Close to hatching

## Eggs with Nymphs



Hatched egg mass with 1<sup>st</sup> instars



Hatched egg mass with 1<sup>st</sup> instars molting into 2<sup>nd</sup> instars

## Nymphs

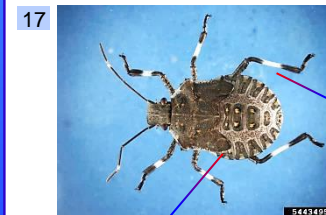
Nymphs have five instars (immature stages) that range from 1/16" to 1/2" in length. They move quickly – faster than the native species.



3<sup>rd</sup> instar

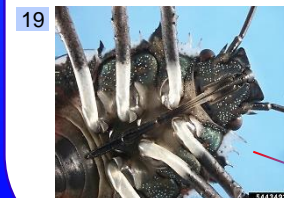


4<sup>th</sup> instar



Older instars begin showing white bands on their legs

5<sup>th</sup> instar wings developing



Younger instars have serrated (spikes) edges along the pronotum