

Ochoco National Forest

Invasive Species to Watch Out For



Michael Rasy, University of Alaska, Bugwood.org

Spotted Knapweed (*Centaurea stoebe*)

Appearance: A bushy, winter-hardy, upright perennial forb up to 4 ft. tall, living 2-5 years.

Foliage: First year the plant is a rosette with lobed leaves. Subsequent years the foliage is alternate on steam, spiraling and jutting out and upward bluish green, hairy leaves.

Flowering Head: Egg-shaped flower bud covered in fringed green bracts with black tips that eventually part to allow a constricted pinkish-to-lavender thistle plume.

Fruit/Seeds: Tightly packed heads of oblong, brownish, hairy seeds, 0.1 in. long, topped by short stubby bristles that disperse like dandelion seeds.

Marisa Williams, University of Arkansas, Fayetteville, Bugwood.org



Michael Shephard, USDA Forest Service, Bugwood.org

Orange Hawkweed (*Hieracium aurantiacum*)

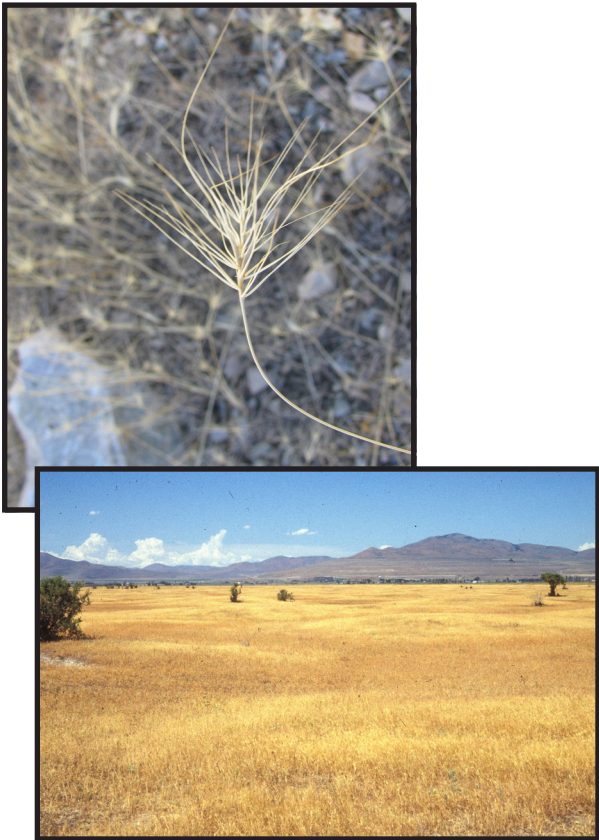
Appearance: A perennial plant that is 11.8-23.6 in. tall and produces a milky sap.

Foliage: Leaves are mostly at the base of the plant, elliptical, 2-8 in. long, 0.4-1.2 in. wide and covered with short, stiff, black hairs. There can be 10-30 flowering steams that can grow up to 2 ft. tall.

Flowering Head: Flowers are orange to red and are in compact clusters of 5 or more dandelion-like flowers on short hairy stalks at the top of plants.

Fruit/Seeds: Fruit is a dark seed with a tuft of white hair to be carried in the wind.

Leslie J. Mehrhoff, University of Connecticut, Bugwood.org



Steve Dewey, Utah State University, Bugwood.org

Medusahead (*Taeniatherum caput-medusae*)

Appearance: An annual grass that is 8-24 in. tall and has distinct bristly seed heads and few leaves.

Foliage: Leaves are less than 0.13 in. wide. Each stem produces a single, short, spike-type seed head.

Flowers: flower heads develop at the top of the stems.

Fruit: Awns (a threadlike bristle) twist as they dry. The longer of the two awns in each spikelet is barbed.

K. George Beck and James Sebastian, Colorado State University, Bugwood.org



K. George Beck and James Sebastian, Colorado State University, Bugwood.org

Dalmatian toadflax (*Linaria dalmatica*)


Appearance: A short-lived, perennial herb that can grow 4 ft. tall. The overall form of the plant is narrow and upright, with multiple stems growing from a single woody base.

Foliage: Leaves are pale green, waxy, and heart-shaped, about 1-3 in. long, that clasp the stem at the base.

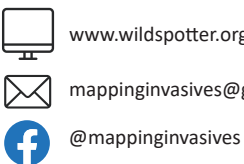
Flowering Head: Bright yellow, snapdragon-like flowers develop. Flowers, including the spur at the bottom, are 1.4-2 in. long and occur densely along the top of the stem.

Fruit/Seeds: Capsules that are 0.1-0.3 in. long and contain many seeds.


Learn More



Works on iPhone, iPad, and Android devices. Download and install the **FREE** Wild Spotter App to map invasive species in your favorite Wild Place!



www.wildspotter.org
mappinginvasives@gmail.com
[@mappinginvasives](https://www.facebook.com/mappinginvasives)



Android iPhone

